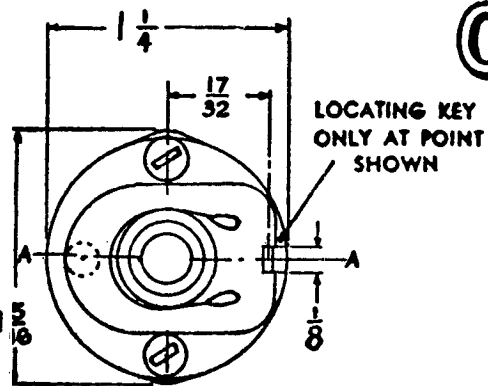


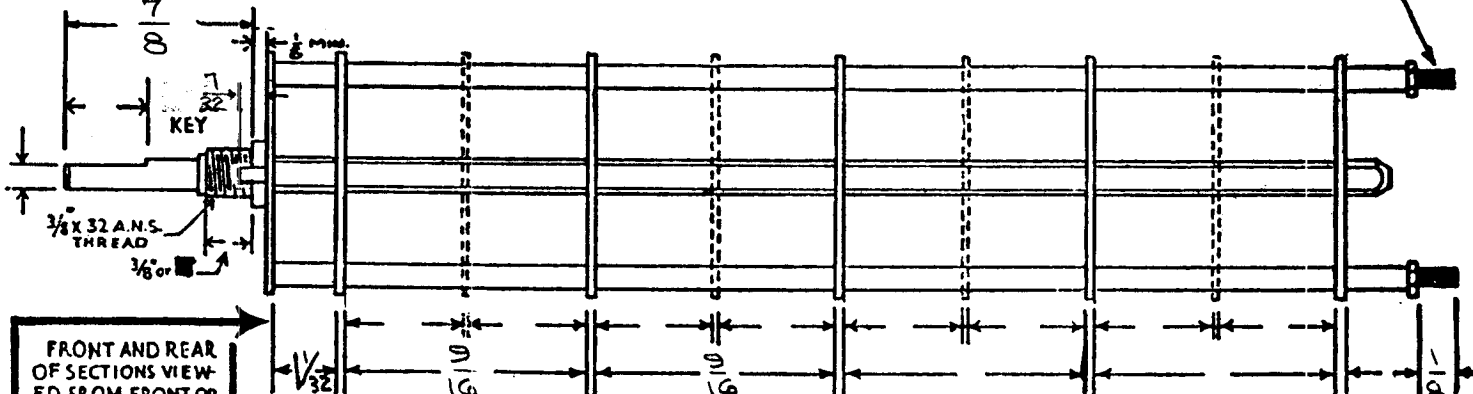
SW-177

# OAK TYPE F SWITCH

CUSTOMER'S PART NO. SW-177

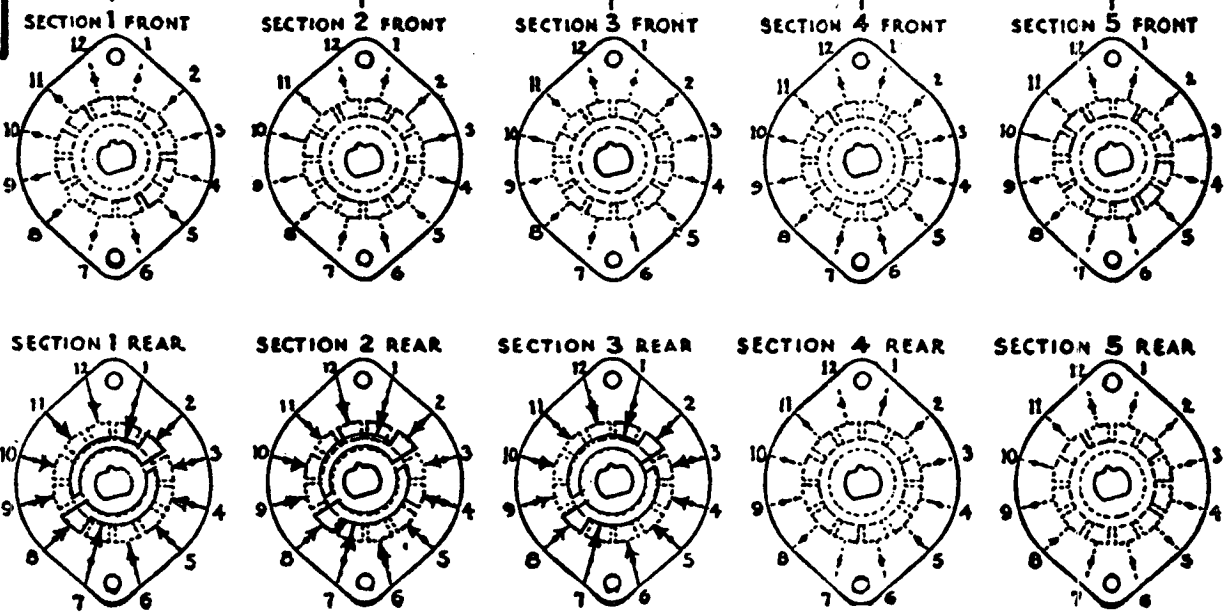


SHOW CUT AWAY PORTION OF FLAT IN BLACK AND GIVE ANGLE TO LINE A-A. ± 3° STANDARD RMA KNURLED AND SLOTTED SHAFT ALSO AVAILABLE

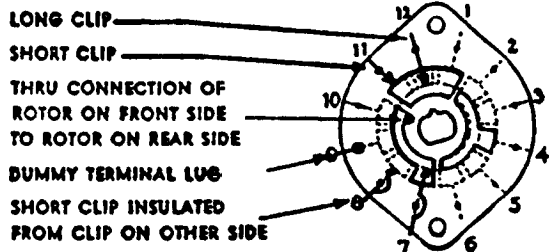


FRONT AND REAR OF SECTIONS VIEWED FROM FRONT OR KNOB END OF SWITCH IN EXTREME COUNTER-CLOCKWISE POSITION

NUMBER OF SECTIONS 3  
NUMBER OF POSITIONS 12  
ANGLE OF THROW 30° (30° OR )



### SYMBOLS USED IN MARKING PRINT



OUTLINE ROTOR BLADES AS SHOWN ABOVE WITH SWITCH IN EXTREME COUNTER-CLOCKWISE POSITION

### SPECIFICATIONS

SHORTING TYPE CONTACTS  NON-SHORTING  IF NOT SPECIFIED SHORTING TYPE WILL BE SUPPLIED.  
INSULATION:  BAKELITE  MYCALEX  SPECIFY IMPREGNATION IF REQUIRED  
FINISH REQUIREMENTS: COMMERCIAL ; ARMY ; NAVY ; SALT TEST (IF ANY GIVE DETAILS)  
CONTACTS AND ROTORS: SILVER PLATED BRASS ; SOLID SILVER ALLOY ; IF NOT SPECIFIED SILVER PLATED BRASS WILL BE SUPPLIED.  
MOUNTING HARDWARE: SUPPLY 3/8" - 32 NUTS ACROSS FLATS; MATERIAL PLATING  
3/8" INTERNAL TOOTH LOCKWASHER; MATERIAL PLATING  
STAMP PART NUMBER SW-177 ON FRONT PLATE, YES  NO   
(NUMBER)

### CUSTOMER NOTES

FUNCTION SWITCH	
MODEL 2410	
THE TECHNICAL MATERIAL CORPORATION	
MAMARONECK, NEW YORK	
DATE 11-29-55	CHKD. 2. B
DRAWN <i>ewb</i>	APPD. A. J. J.
SHEET 1 OF 1	NO. SW-177

CUSTOMER

OAK MFG. CO.

1260 CLYBOURN AVE., CHICAGO 10, ILL.