

CUSTOMERS SW-173
PART NO.

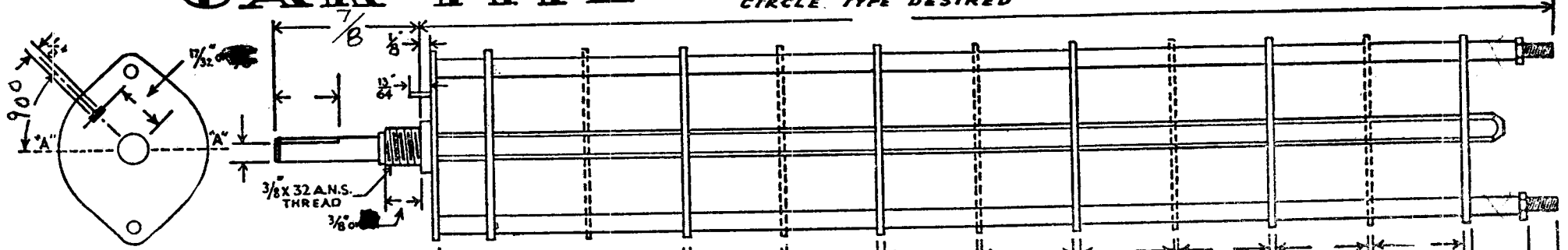
THE TECHNICAL MATERIEL CORPORATION

OAK MFG. CO.

1260 CLYBORN AVE., CHICAGO 10, ILL.

OAK TYPE (H, HC, DH, DHC, QH, QDH, QHC, QDHC.) SWITCH

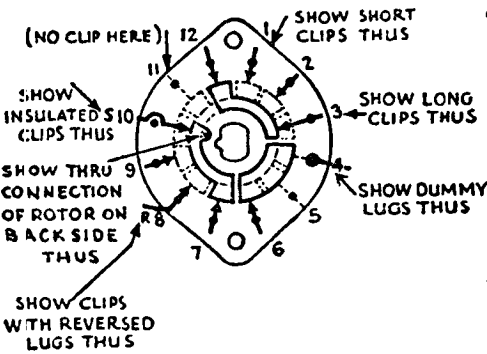
CIRCLE TYPE DESIRED



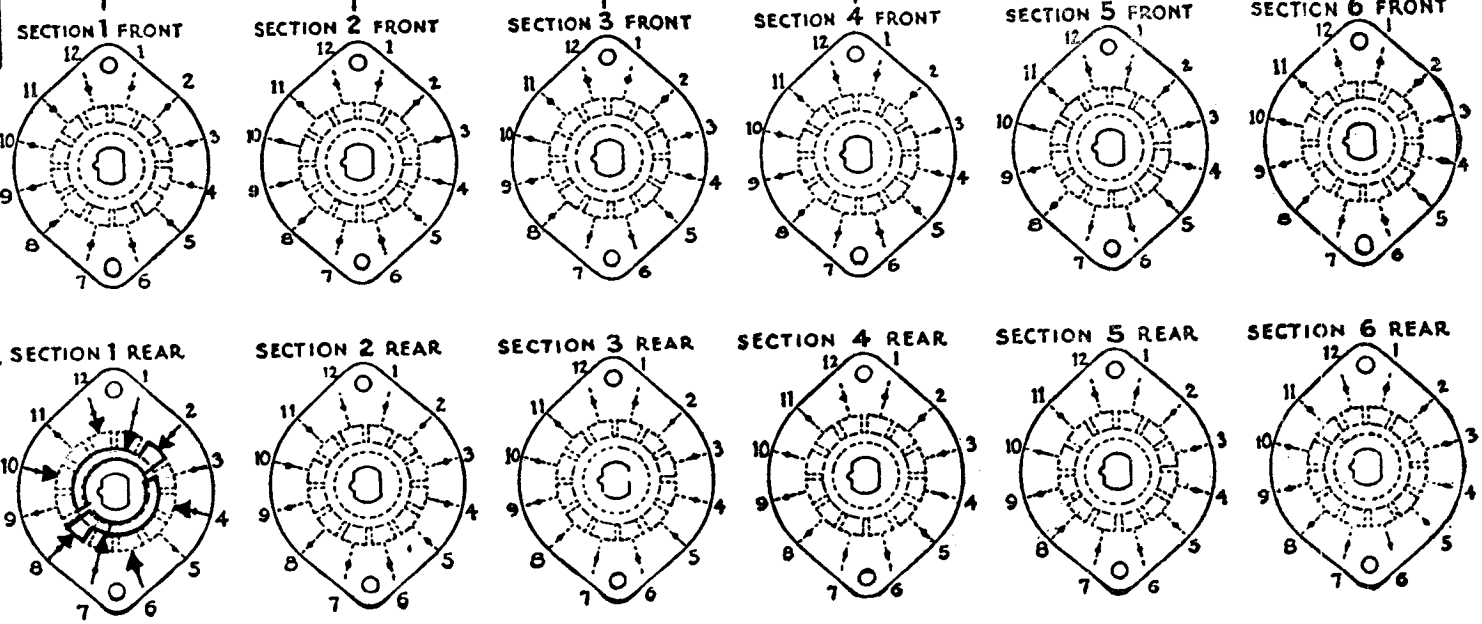
DRAW IN FLAT ON ABOVE SHAFT IN EXTREME COUNTER CLOCKWISE POSITION AND SHOW ANGLE IN REFERENCE TO LINE "A-A"

FRONT AND REAR OF SECTIONS VIEWED FROM FRONT OR KNOB END OF SWITCH IN EXTREME COUNTER-CLOCKWISE POSITION

TOTAL NO. OF SECTIONS _____
NO. OF POSITIONS 3



OUTLINE ROTOR BLADES AS ABOVE IN EXTREME COUNTER-CLOCKWISE (LEFT) POSITION



FILL IN ALL DIMENSIONS INDICATED ABOVE AND CHECK ALL SPECIFICATIONS BELOW. REFER TO OAK ENGINEERING DATA SHEETS FOR STANDARD DIMENSIONS OF TYPE DESIRED AND FOR SPECIMEN OF THIS LAYOUT SHEET. TO OBTAIN MOST ECONOMICAL UNITS AND SHORTEST DELIVERY DATES PLEASE ADHERE TO THE STANDARDS AS CLOSELY AS POSSIBLE.

SPECIFICATIONS

SHORTING TYPE CONTACTS NON-SHORTING IF NOT SPECIFIED SHORTING TYPE WILL BE SUPPLIED.
 INSULATION: BAKELITE ; CERAMIC SPECIFY IMPREGNATION IF REQUIRED _____
 FINISH REQUIREMENTS: COMMERCIAL ; ARMY ; NAVY ; SALT TEST (IF ANY GIVE DETAILS) _____
 CONTACTS AND ROTORS: SILVER PLATED BRASS ; SOLID SILVER ALLOY ; IF NOT SPECIFIED SILVER PLATED BRASS WILL BE SUPPLIED.
 MOUNTING HARDWARE: SUPPLY _____ $\frac{3}{8}$ " - 32 NUTS _____ ACROSS FLATS; MATERIAL _____ PLATING _____
 _____ $\frac{3}{8}$ " INTERNAL TOOTH LOCKWASHER; MATERIAL _____ PLATING _____

STAMP PART NUMBER SW-173 ON FRONT PLATE, YES NO
(NUMBER)

(RTF)

CUSTOMER NOTES

DETENT: 60°

		HAS "H" TYPE			
A	11/16/55	SEC. 1 REAR CLARIFIED	BY	A.J.J.	
SYM	DATE	DESCRIPTION	CHKD	APP	
METER SWITCH S-203					
THE TECHNICAL MATERIEL CORP. MAMARONECK, NEW YORK					
DRAWN		CHECKED		SW-173 A	
O.J.P.		A.J.J.			
ELEC. DES		APPROVAL			