

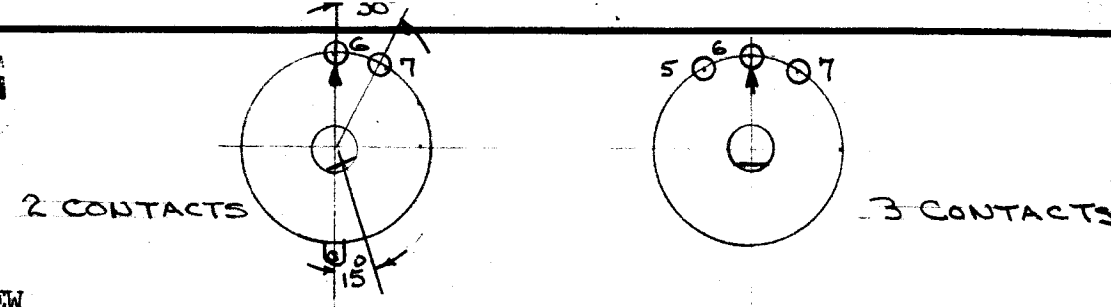
IF IT IS FOUND DESIRABLE TO CHANGE ANY TOLERANCE OR OTHER DETAIL SPECIFIED ON THIS DRAWING NOTIFY THE PURCHASER PROMPTLY.

MAXIMUM ALLOWABLE TOLERANCES HAVE BEEN DETERMINED AND DEVIATIONS WILL BE CAUSE FOR REJECTION. REMOVE ALL BURRS AND SHARP EDGES

TMC NO.	CAT. NO.	NO. OF TAPS	TOTAL ROTATION
SW-167-2	111-2	2	30°
-3	111-3	3	60°
-4	111-4	4	90°
-5	111-5	5	120°
-6	111-6	6	150°
-7	111-7	7	180°
-8	111-8	8	210°
-9	111-9	9	240°
-10	111-10	10	270°
-11	111-11	11	300°

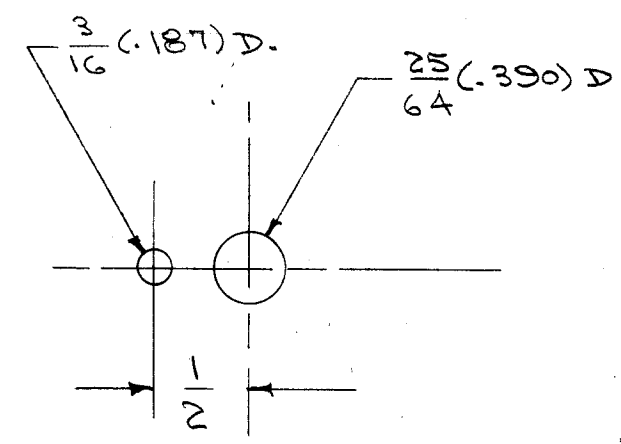
SW-167 C

STANDARD DRAWING

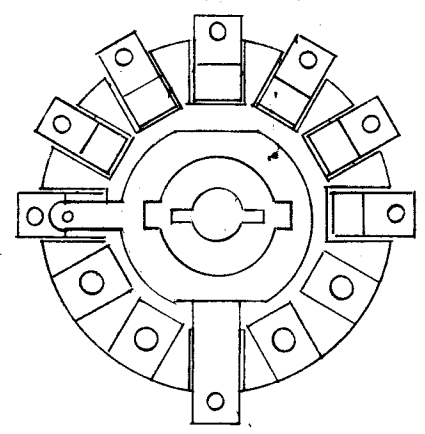


NOTE: Knob Side View

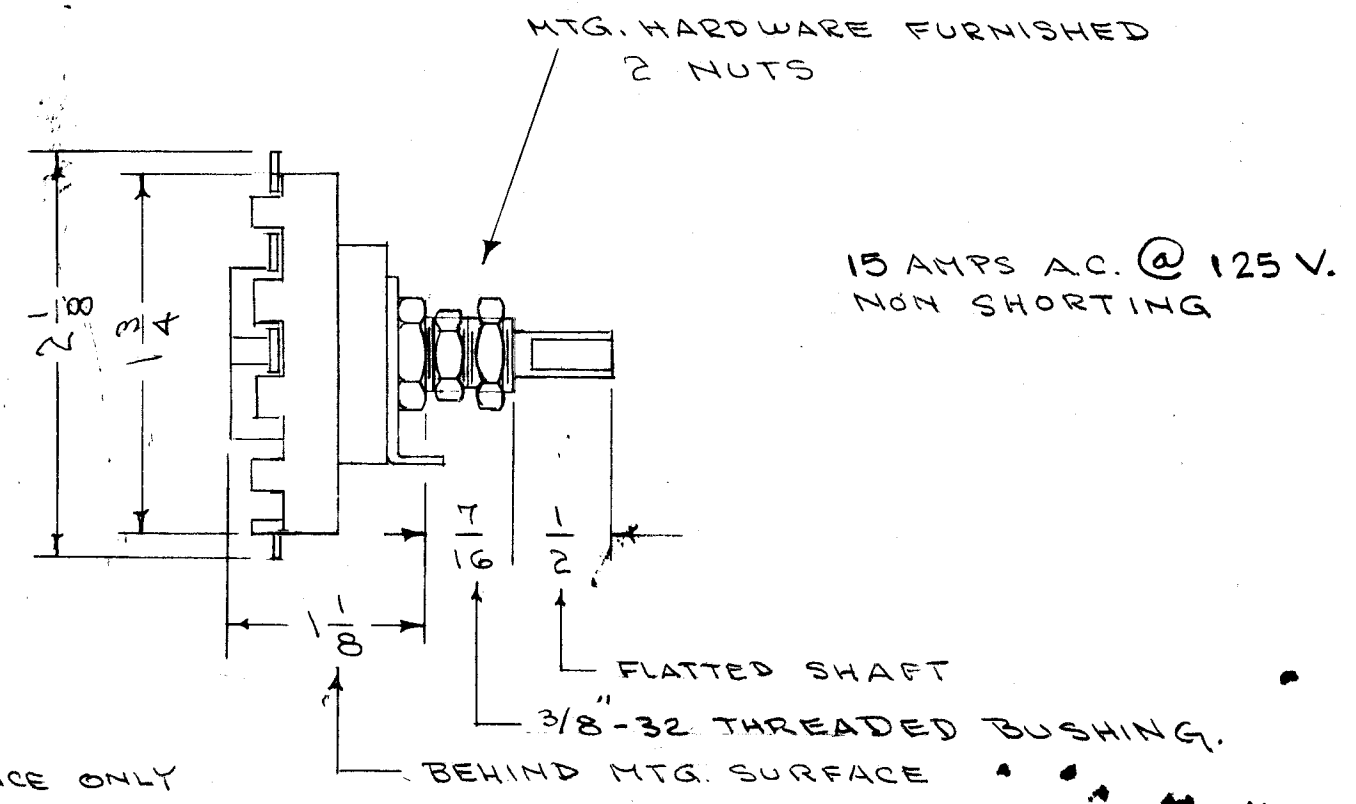
FOR ODD No. OF CONTACTS USE SHAFT WITH FLAT IN LINE WITH STOP.
FOR EVEN No. OF CONTACTS USE SHAFT WITH FLAT 15° COUNTER-CLOCK-WISE OUT OF LINE WITH STOP WHEN VIEWED FROM KNOB SIDE.



DRILLING PLAN



DIMENSIONS FOR REFERENCE ONLY



SW-167-4
TMC NO NO. OF TAPS

ISSUE	ITEM	CHANGED FROM	DATE	CN. NO.	DRAFTS	CHECKER	ENG. APP.
C		15A WAS 10A ; 125V WAS 150	4/25/66	16140	WCA	JCS	JCS
B		CONTACT NOTE ADDED	10/10/58	2	file	JCS	JCS
A	1	LOCK WASHER DELETED FROM MTG. HARDWARE	4/4/6	1	CSO	JCS	JCS

TOLERANCES		SCALE: S-401-56 (111)	
ALL OTHERS	DEC. DIM. ± FRAC. DIM. ± ANGULAR DIM. ±	DRILL, PUNCH, COMMERCIAL STOCK SIZES AND MANUFACTURERS TOLERANCES ARE NOT INCLUDED.	

REQ. PER UNIT	MODEL	PROJECT NO.	ASSY. NO.	DATE

REQ. ITEM	PART NO.	DESCRIPTION	SYMBOL
		THE TECHNICAL MATERIEL CORP. MAMARONECK, NEW YORK	
		TAP SWITCH	
		NON SHORTING	
		CDD. 8/16/55	044/10/26/53
		DRAWN	ELEC. DES. APP. MECH. DES. APP.
		CHECKED	FINAL APPROVAL
			SW-167 C