

IF IT IS FOUND DESIRABLE TO CHANGE ANY TOLERANCE OR OTHER DETAIL SPECIFIED ON THIS DRAWING NOTIFY THE PURCHASER PROMPTLY.

SW-162 D

MAXIMUM ALLOWABLE TOLERANCES HAVE BEEN DETERMINED AND DEVIATIONS WILL BE CAUSE FOR REJECTION. REMOVE ALL BURRS AND SHARP EDGES

REQ. PER UNIT

USED ON

MODEL

PROJECT NO.

ASS'Y. NO.

DATE

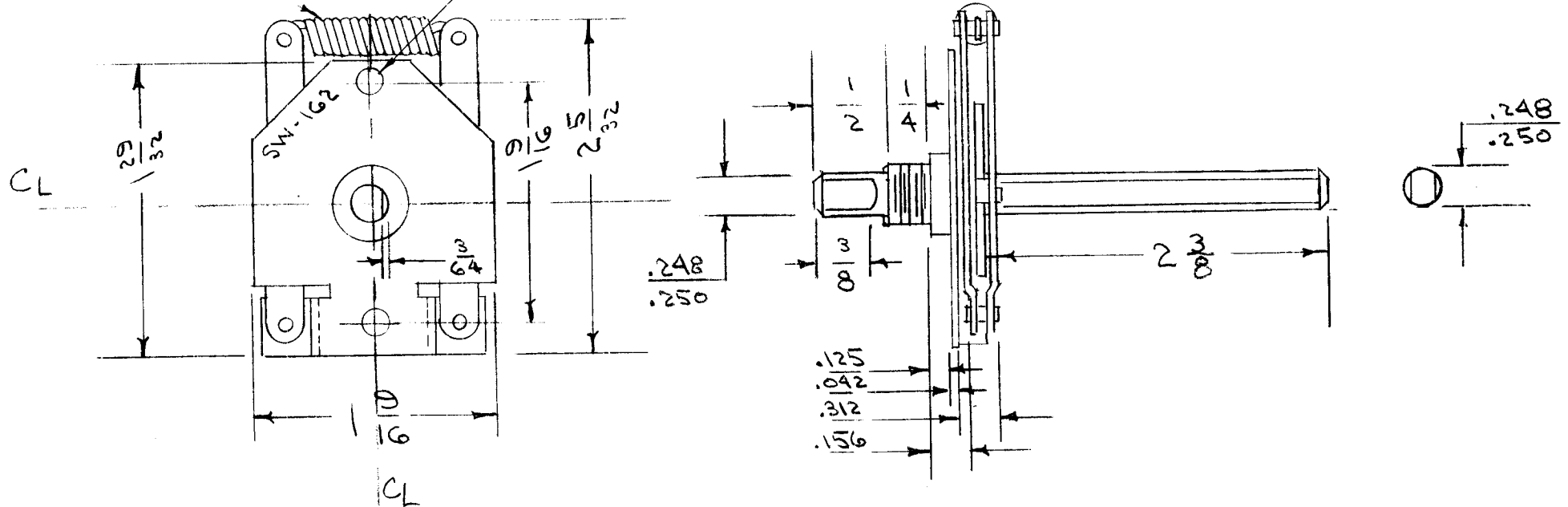
1

GPR-90

5-12-58

CENTRALAB P-5185

$\frac{9}{64}$  (.140) D.  
2 HOLES



NO STOPS NECESSARY

DIM. FOR REF. ONLY  
FLATTED SHAFT SHOWN IN SWITCH POSITION #1  
6 POSITIONS AT 60° EACH

REF: CENTRALAB TYPE G INDEX

| REQ.               | ITEM | PART NO. | DESCRIPTION  | SYMBOL          |
|--------------------|------|----------|--|-----------------|
|                    |      |          | THE TECHNICAL MATERIEL CORP.<br>MAMARONECK, NEW YORK |                 |
| STOCK SIZE         |      |          | STEEL  |                 |
| MATERIAL           |      |          | WEIGHT PER PC.                                       |                 |
| TYPE & TEMPER      |      |          | CDD 3-28-SS  | ###             |
| HEAT TREAT. SPEC.  |      |          | DRAWN  | ELEC. DES. APP. |
| FINISH & SPEC. NO. |      |          | MECH. DES. APP.                                      |                 |
|                    |      |          | G.T.O.   |                 |
|                    |      |          | CHECKED  |                 |
|                    |      |          | FINAL APPROVAL                                       |                 |
|                    |      |          | S-105 CAD. PLATE                                     |                 |
|                    |      |          | SW-162 D   |                 |

| ISSUE | ITEM | CHANGED FROM            | DATE     | CN. NO. | DRAFTS | CHECKER | ENG. APP. |
|-------|------|-------------------------|----------|---------|--------|---------|-----------|
| D     | 1    | 2 3/8 WAS 2 1/2         | 12/8/55  | 4       | JAL    | CS      | WJ        |
| C     | 1    | 9/64 HOLES WERE Y8      | 11/14/55 | 3       | JAL    | CS      | WJ        |
| B     | 1    | 2 1/2 WAS 2 1/4         | 7/19/55  | 2       | JAL    | CS      | WJ        |
| A     | 1    | SPRING NO. P-5185 ADDED | 6-15-55  | 1       | JAL    | CS      | WJ        |

TOLERANCES

SCALE

DRILL, PUNCH, COMMERCIAL STOCK  
SIZES AND MANUFACTURERS  
TOLERANCES ARE NOT INCLUDED.

ALL OTHERS

DEC. DIM. ±  
FRAC. DIM. ±  
ANGULAR DIM. ±