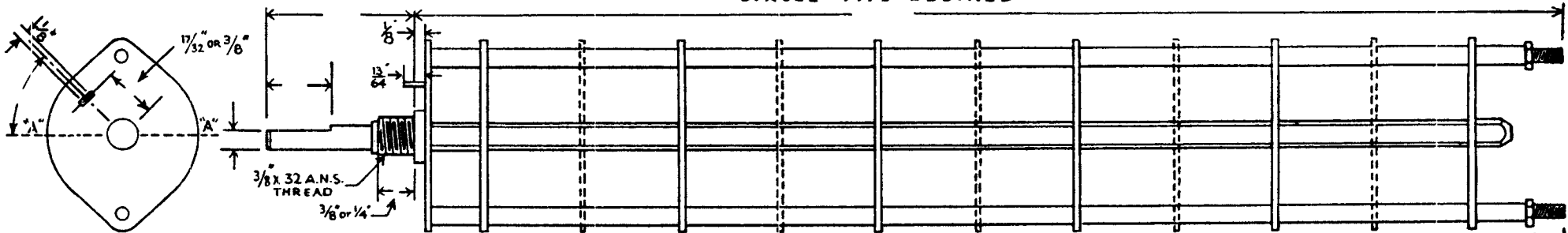


# OAK TYPE <sup>(H)</sup> HC, DH, DHC, QH, GDH, QHC, GDHC, SWITCH

SW-154

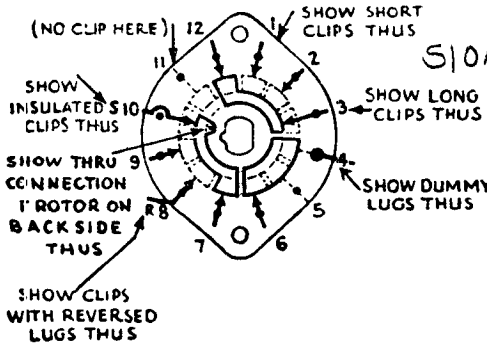
CIRCLE TYPE DESIRED



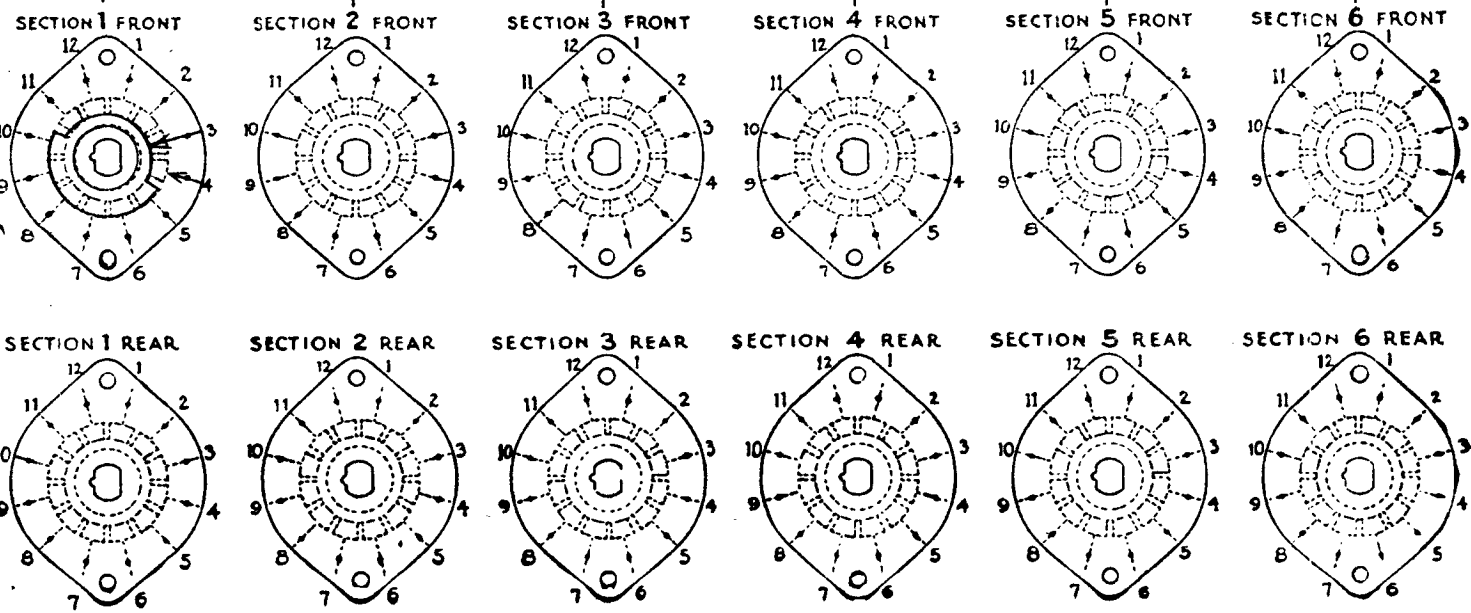
DRAW IN FLAT ON ABOVE SHAFT IN EXTREME COUNTER CLOCKWISE POSITION AND SHOW ANGLE IN REFERENCE TO LINE "A-A"

FRONT AND REAR OF SECTIONS VIEWED FROM FRONT OR KNOB END OF SWITCH IN EXTREME COUNTER-CLOCKWISE POSITION

TOTAL NO. OF SECTIONS 1  
NO. OF POSITIONS 6



OUTLINE ROTOR BLADES AS ABOVE IN EXTREME COUNTER-CLOCKWISE (LEFT) POSITION



FILL IN ALL DIMENSIONS INDICATED ABOVE AND CHECK ALL SPECIFICATIONS BELOW. REFER TO OAK ENGINEERING DATA SHEETS FOR STANDARD DIMENSIONS OF TYPE DESIRED AND FOR SPECIMEN OF THIS LAYOUT SHEET. TO OBTAIN MOST ECONOMICAL UNITS AND SHORTEST DELIVERY DATES PLEASE ADHERE TO THE STANDARDS AS CLOSELY AS POSSIBLE.

**SPECIFICATIONS**

SHORTING TYPE CONTACTS  NON-SHORTING  IF NOT SPECIFIED SHORTING TYPE WILL BE SUPPLIED.  
 INSULATION: BAKELITE  CERAMIC  SPECIFY IMPREGNATION IF REQUIRED  
 FINISH REQUIREMENTS: COMMERCIAL ; ARMY ; NAVY ; SALT TEST (IF ANY GIVE DETAILS) 100 HR.  
 CONTACTS AND ROTORS: SILVER PLATED BRASS ; SOLID SILVER ALLOY ; IF NOT SPECIFIED SILVER PLATED BRASS WILL BE SUPPLIED.  
 MOUNTING HARDWARE: SUPPLY 3/8" - 32 NUTS ACROSS FLATS; MATERIAL          PLATING           
3/8" INTERNAL TOOTH LOCKWASHER; MATERIAL          PLATING           
 STAMP PART NUMBER          ON FRONT PLATE, YES  NO

CUSTOMER NOTES

BAND SWITCH - VFD  
2nd CONVERTER  
SEPT. 28, 1954  
P.L.K.  
SW 1-154

CUSTOMER'S TECHNICAL MATERIAL COMPANY

OAK MANUFACTURING CO. 1260 CLYBORN AVE., CHICAGO 10, ILL.