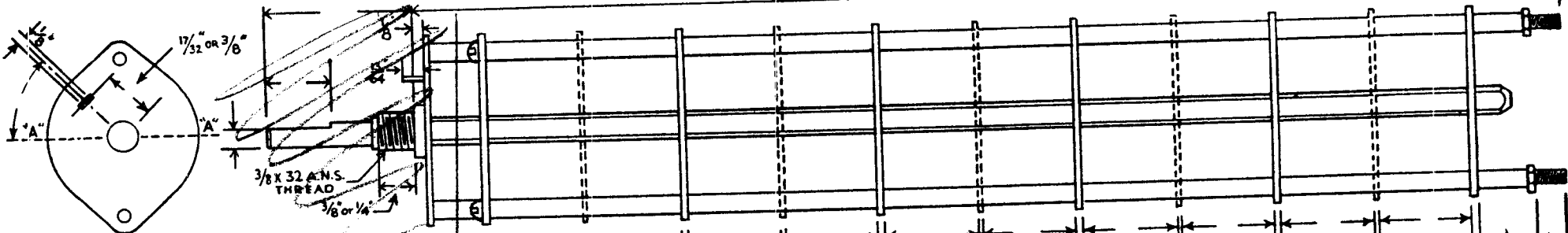


OAK TYPE (H. HC DH, DMC, QH, QDH, QHC, ODHC.) SWITCH

CIRCLE TYPE DESIRED

CUSTOMER'S PART NO. _____
 CUSTOMER The Technical Material Corp

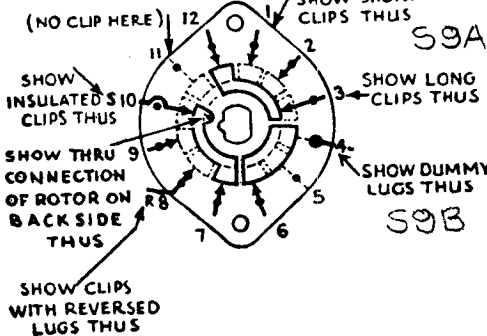


DRAW IN FLAT ON ABOVE SHAFT IN EXTREME COUNTER CLOCKWISE POSITION AND SHOW ANGLE IN REFERENCE TO LINE "A-A"

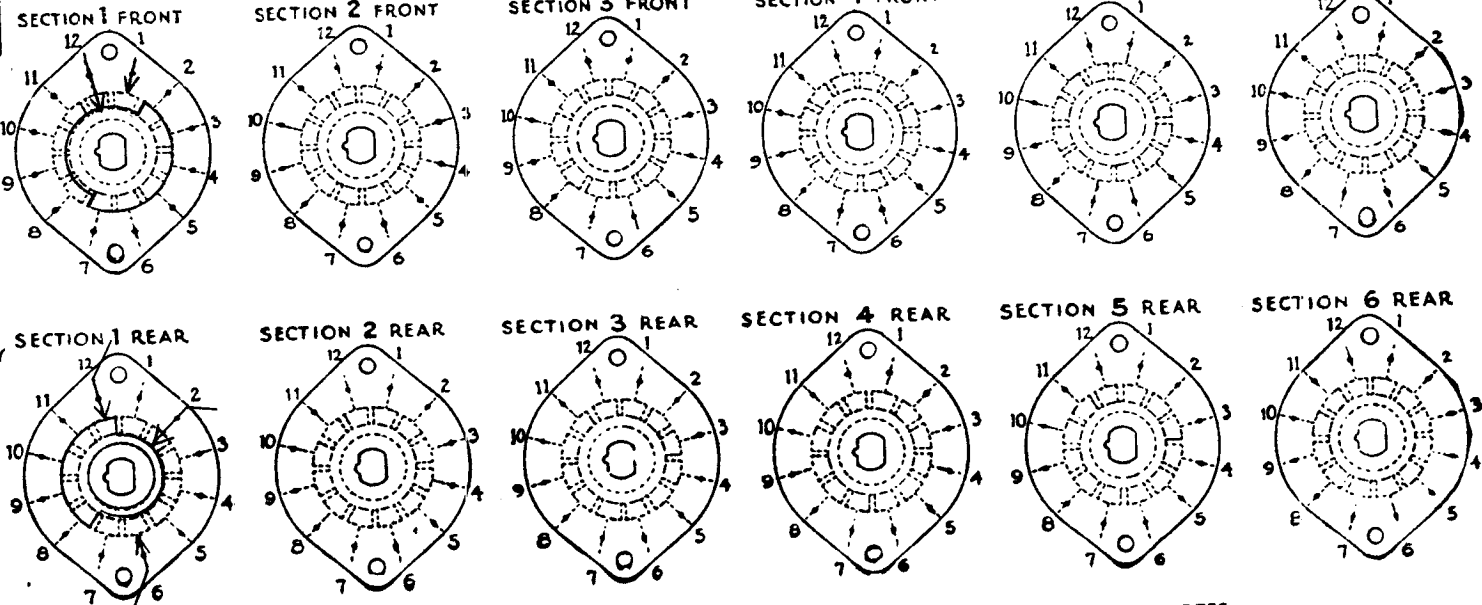
FRONT AND REAR OF SECTIONS VIEWED FROM FRONT OR KNOB END OF SWITCH IN EXTREME COUNTER-CLOCKWISE POSITION

TOTAL NO. OF SECTIONS 1

NO. OF POSITIONS 6



OUTLINE ROTOR BLADES AS ABOVE IN EXTREME COUNTER-CLOCKWISE (LEFT) POSITION



CUSTOMER NOTES

FILL IN ALL DIMENSIONS INDICATED ABOVE AND CHECK ALL SPECIFICATIONS BELOW. REFER TO OAK ENGINEERING DATA SHEETS FOR STANDARD DIMENSIONS OF TYPE DESIRED AND FOR SPECIMEN OF THIS LAYOUT SHEET. TO OBTAIN MOST ECONOMICAL UNITS AND SHORTEST DELIVERY DATES PLEASE ADHERE TO THE STANDARDS AS CLOSELY AS POSSIBLE.

SPECIFICATIONS
 SHORTING TYPE CONTACTS NON-SHORTING IF NOT SPECIFIED SHORTING TYPE WILL BE SUPPLIED.
 INSULATION: BAKELITE CERAMIC SPECIFY IMPREGNATION IF REQUIRED _____
 FINISH REQUIREMENTS: COMMERCIAL ARMY NAVY SALT TEST (IF ANY GIVE DETAILS) 100 HR.
 CONTACTS AND ROTORS: SILVER PLATED BRASS SOLID SILVER ALLOY IF NOT SPECIFIED SILVER PLATED BRASS WILL BE SUPPLIED.
 MOUNTING HARDWARE: SUPPLY _____ 3/8" - 32 NUTS _____ ACROSS FLATS; MATERIAL _____ PLATING _____
 _____ 3/8" INTERNAL TOOTH LOCKWASHER; MATERIAL _____ PLATING _____
 STAMP PART NUMBER _____ ON FRONT PLATE, YES NO

BAND SWITCH - VOR
 MIXER SWITCH
 SEPT. 20, 1934
 P.L.R.
 SW 1-153

DATE _____

OAK MANUFACTURING CO.
 1260 CLYBORN AVE., CHICAGO 10, ILL.