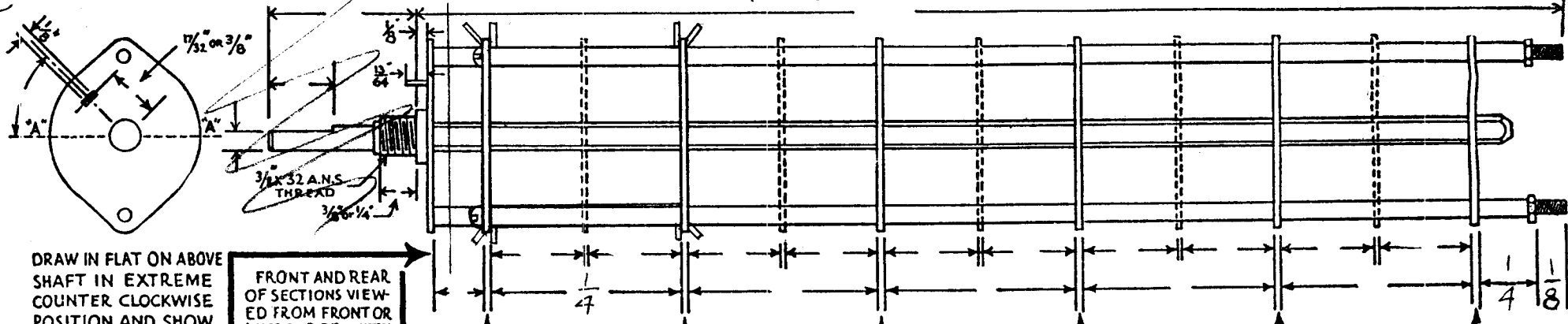


CUSTOMER The Technical Material Company PART NO. (EMNS84)  
 OAK MFG. CO. 1260 CLYBORN AVE., CHICAGO 10, ILL.

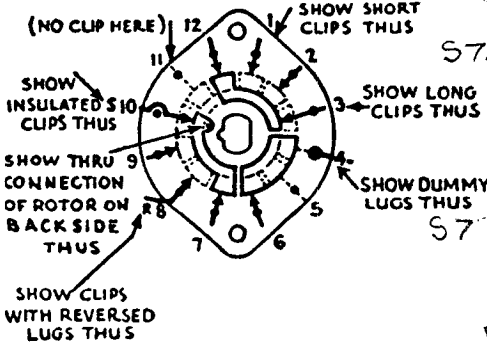
# OAK TYPE (H, HC, DH, DHC, OH, GDH, OHC, ODHC.) SWITCH

CIRCLE TYPE DESIRED

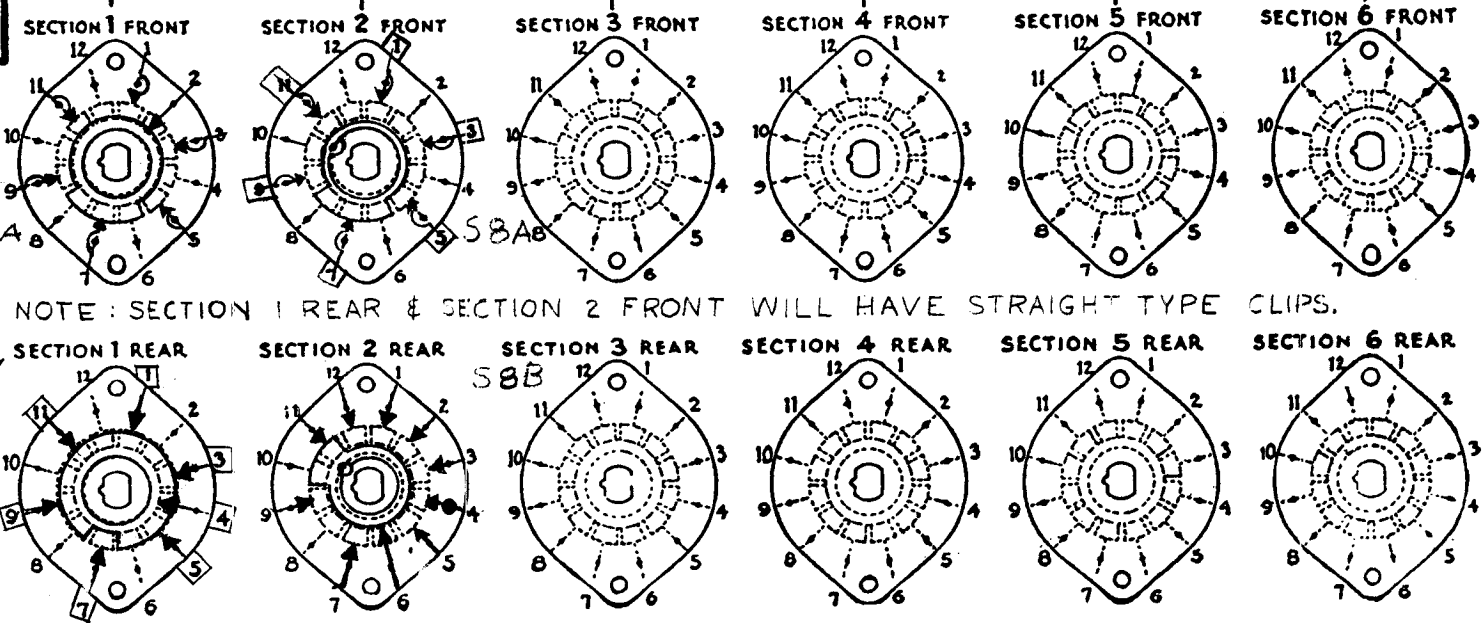


DRAW IN FLAT ON ABOVE SHAFT IN EXTREME COUNTER CLOCKWISE POSITION AND SHOW ANGLE IN REFERENCE TO LINE "A-A"  
 FRONT AND REAR OF SECTIONS VIEWED FROM FRONT OR KNOB END OF SWITCH IN EXTREME COUNTER CLOCKWISE POSITION

TOTAL NO. OF SECTIONS 2  
 NO. OF POSITIONS 6



OUTLINE ROTOR BLADES AS ABOVE IN EXTREME COUNTER-CLOCKWISE (LEFT) POSITION



NOTE: SECTION 1 REAR & SECTION 2 FRONT WILL HAVE STRAIGHT TYPE CLIPS.

FILL IN ALL DIMENSIONS INDICATED ABOVE AND CHECK ALL SPECIFICATIONS BELOW.  
 REFER TO OAK ENGINEERING DATA SHEETS FOR STANDARD DIMENSIONS OF TYPE DESIRED AND FOR SPECIMEN OF THIS LAYOUT SHEET. TO OBTAIN MOST ECONOMICAL UNITS AND SHORTEST DELIVERY DATES PLEASE ADHERE TO THE STANDARDS AS CLOSELY AS POSSIBLE.

### SPECIFICATIONS

SHORTING TYPE CONTACTS  NON-SHORTING  IF NOT SPECIFIED SHORTING TYPE WILL BE SUPPLIED.  
 INSULATION: BAKELITE ; CERAMIC  SPECIFY IMPREGNATION IF REQUIRED.  
 FINISH REQUIREMENTS: COMMERCIAL ; ARMY ; NAVY ; SALT TEST (IF ANY GIVE DETAILS) 100 hr.  
 CONTACTS AND ROTORS: SILVER PLATED BRASS ; SOLID SILVER ALLOY ; IF NOT SPECIFIED SILVER PLATED BRASS WILL BE SUPPLIED.  
 MOUNTING HARDWARE: SUPPLY 3/8" - 32 NUTS \_\_\_\_\_ ACROSS FLATS; MATERIAL \_\_\_\_\_ PLATING \_\_\_\_\_  
 \_\_\_\_\_ 3/8" INTERNAL TOOTH LOCKWASHER; MATERIAL \_\_\_\_\_ PLATING \_\_\_\_\_  
 STAMP PART NUMBER \_\_\_\_\_ ON FRONT PLATE, YES  NO  (NUMBER)

### CUSTOMER NOTES

BAND SWITCH - VTR  
 OSCILLATOR STAGE  
 Sept 24 '54  
 P.L.K. SW-152-A

