

OAK TYPE

(H. (HC) DH, DHC, QH, QDH, OHC, ODHC.)

SWITCH

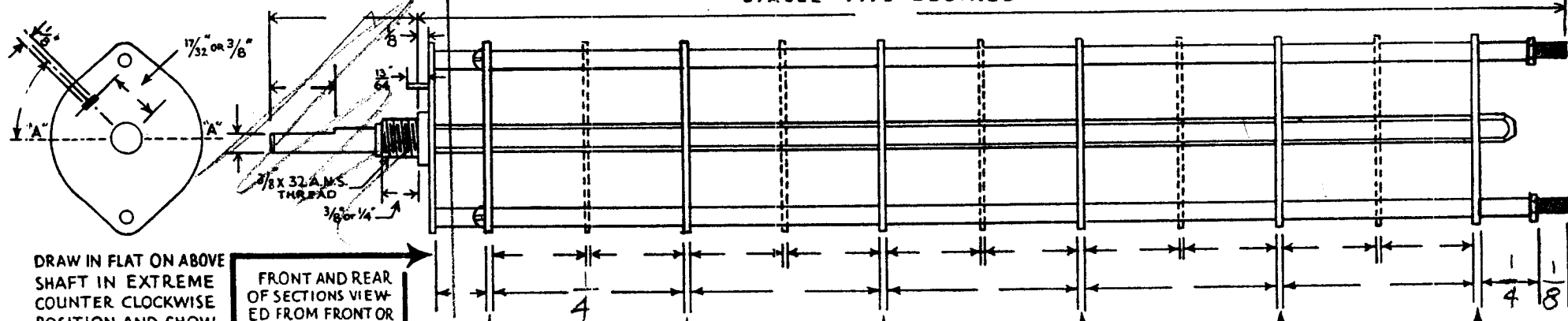
CIRCLE TYPE DESIRED

CUSTOMER'S SW-151
PART NO.

The Technical Material Corp

CUSTOMER

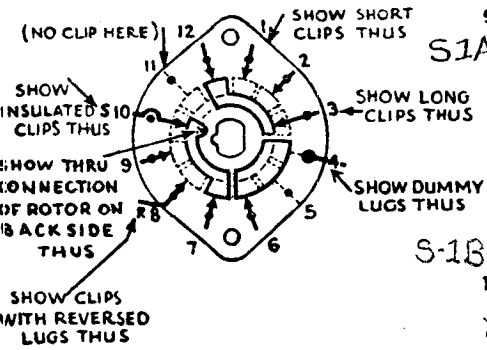
OAK MANUFACTURING CO.
1260 CLYBORN AVE., CHICAGO 10, ILL.



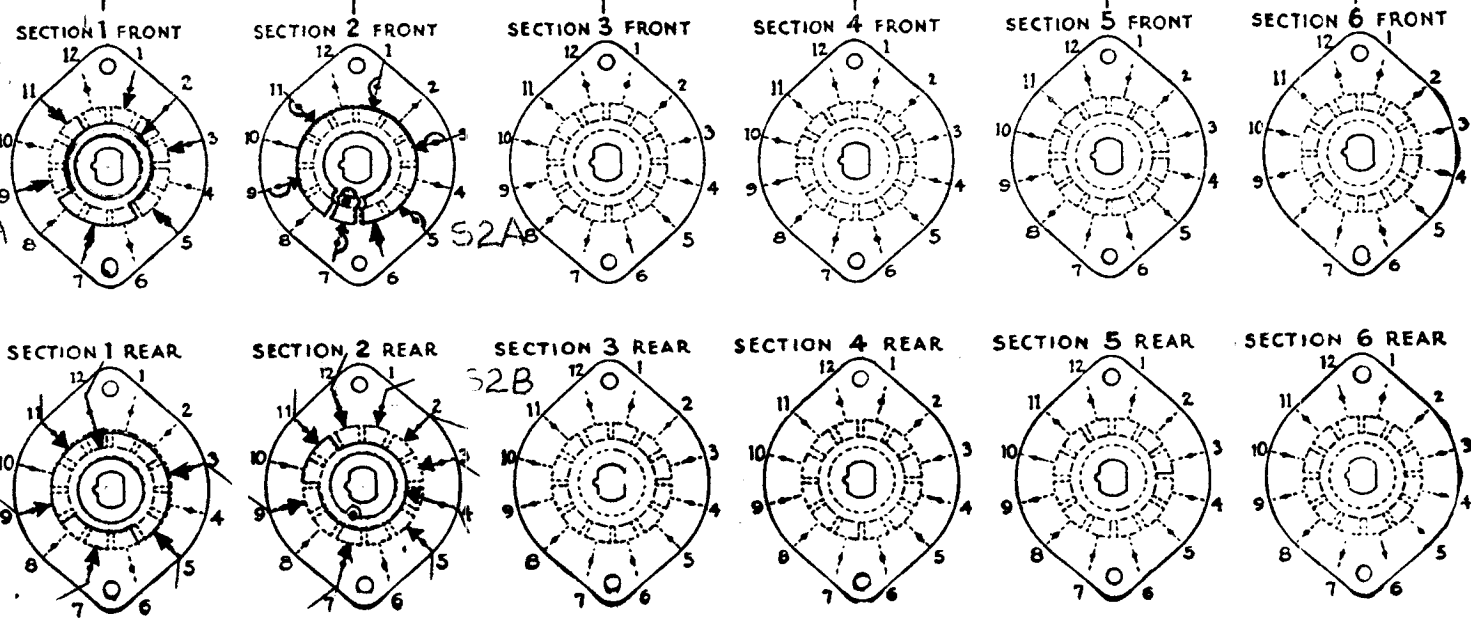
DRAW IN FLAT ON ABOVE SHAFT IN EXTREME COUNTER CLOCKWISE POSITION AND SHOW ANGLE IN REFERENCE TO LINE "A-A"

FRONT AND REAR OF SECTIONS VIEWED FROM FRONT OR KNOB END OF SWITCH IN EXTREME COUNTER-CLOCKWISE POSITION

TOTAL NO. OF SECTIONS 2
NO. OF POSITIONS 6



OUTLINE ROTOR BLADES AS ABOVE IN EXTREME COUNTER-CLOCKWISE (LEFT) POSITION



CUSTOMER NOTES

FILL IN ALL DIMENSIONS INDICATED ABOVE AND CHECK ALL SPECIFICATIONS BELOW. REFER TO OAK ENGINEERING DATA SHEETS FOR STANDARD DIMENSIONS OF TYPE DESIRED AND FOR SPECIMEN OF THIS LAYOUT SHEET. TO OBTAIN MOST ECONOMICAL UNITS AND SHORTEST DELIVERY DATES PLEASE ADHERE TO THE STANDARDS AS CLOSELY AS POSSIBLE.

SPECIFICATIONS

SHORTING TYPE CONTACTS NON-SHORTING IF NOT SPECIFIED SHORTING TYPE WILL BE SUPPLIED.
 INSULATION: BAKELITE ; CERAMIC SPECIFY IMPREGNATION IF REQUIRED.
 FINISH REQUIREMENTS: COMMERCIAL ; ARMY ; NAVY ; SALT TEST (IF ANY GIVE DETAILS) 100 HR
 CONTACTS AND ROTORS: SILVER PLATED BRASS ; SOLID SILVER ALLOY ; IF NOT SPECIFIED SILVER PLATED BRASS WILL BE SUPPLIED.
 MOUNTING HARDWARE: SUPPLY 3/8" - 32 NUTS ACROSS FLATS; MATERIAL PLATING
3/8" INTERNAL TOOTH LOCKWASHER; MATERIAL PLATING
 STAMP PART NUMBER ON FRONT PLATE, YES NO
 (NUMBER)

BAND SWITCH - VTR
R.F. Stage
Sept. 24 '54
P.L.K.

SW-151

DATE _____