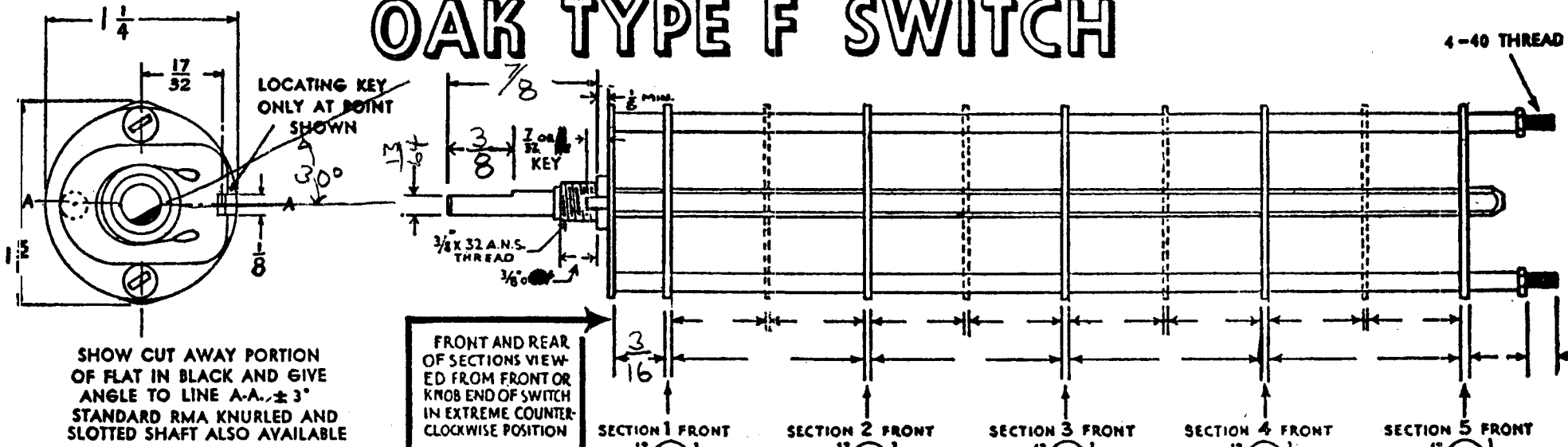


SW-148

OAK TYPE F SWITCH

4-40 THREAD

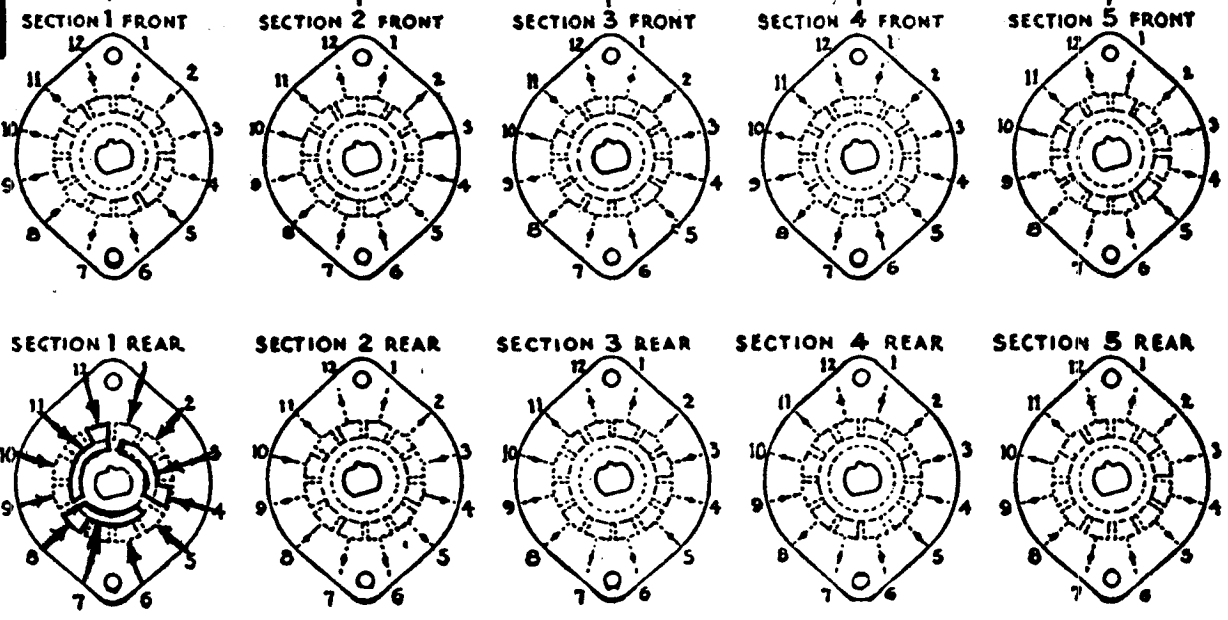
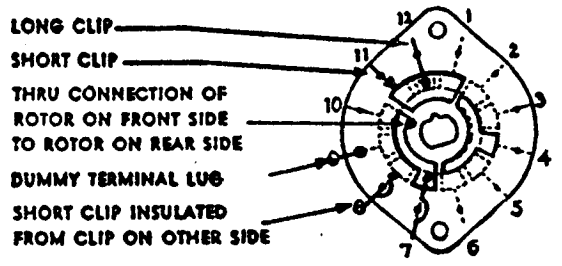


SHOW CUT AWAY PORTION OF FLAT IN BLACK AND GIVE ANGLE TO LINE A-A. ± 3° STANDARD RMA KNURLED AND SLOTTED SHAFT ALSO AVAILABLE

FRONT AND REAR OF SECTIONS VIEWED FROM FRONT OR KNOB END OF SWITCH IN EXTREME COUNTER-CLOCKWISE POSITION

NUMBER OF SECTIONS 1
 NUMBER OF POSITIONS 3
 ANGLE OF THROW 30° (30° OR 45°)

SYMBOLS USED IN MARKING PRINT



OUTLINE ROTOR BLADES AS SHOWN ABOVE WITH SWITCH IN EXTREME COUNTER-CLOCKWISE POSITION

SPECIFICATIONS

SHORTING TYPE CONTACTS NON-SHORTING IF NOT SPECIFIED SHORTING TYPE WILL BE SUPPLIED.
 INSULATION: $\frac{1}{16}$ BAKELITE $\frac{1}{8}$ MYCALEX SPECIFY IMPREGNATION IF REQUIRED.
 FINISH REQUIREMENTS: COMMERCIAL ; ARMY ; NAVY ; SALT TEST (IF ANY GIVE DETAILS) 200 HRS.
 CONTACTS AND ROTORS: SILVER PLATED BRASS ; SOLID SILVER ALLOY ; IF NOT SPECIFIED SILVER PLATED BRASS WILL BE SUPPLIED.
 MOUNTING HARDWARE: SUPPLY 1 $\frac{3}{8}$ " . 32 NUTS 1/2" ACROSS FLATS; MATERIAL BR. PLATING NICK.
1 $\frac{3}{8}$ " INTERNAL TOOTH LOCKWASHER; MATERIAL " PLATING "
 STAMP PART NUMBER SW-148 ON FRONT PLATE, YES NO

CUSTOMER NOTES

P.M.O.
 OAK CAT. # 64331-F1X
 SWITCH ROTARY

A	SECTION 1 REAR, CHANGED 7/8 WAS 1"	8/9/54	AT
LET	SHAFT PLATED DESCRIPTION	DATE	APP
SW-148 A		DATE 9-9-54	

M.H.S. A.J.J.

CUSTOMERS PART NO. SW-148

THE TECHNICAL MATERIAL CORP.

CUSTOMER

OAK MFG. CO.

1260 CLYBOURN AVE, CHICAGO 10, ILL