

IF IT IS FOUND DESIRABLE TO CHANGE ANY TOLERANCE OR OTHER DETAIL SPECIFIED ON THIS DRAWING NOTIFY THE PURCHASER PROMPTLY.

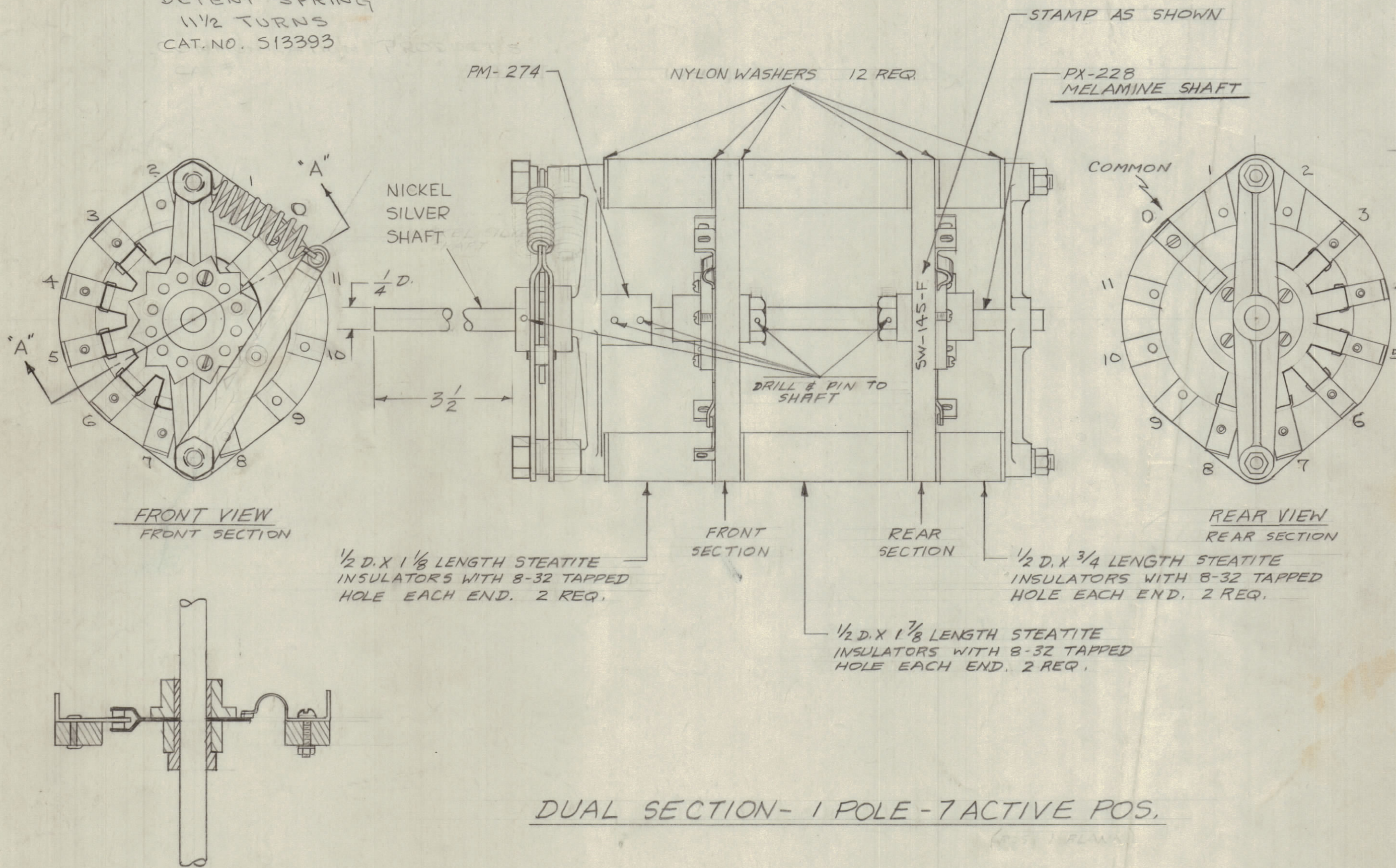
MAXIMUM ALLOWABLE TOLERANCES HAVE BEEN DETERMINED AND DEVIATIONS WILL BE CAUSE FOR REJECTION. REMOVE ALL BURRS AND SHARP EDGES

NOTICE TO PERSONS RECEIVING THIS DRAWING

THE TECHNICAL MATERIEL CORPORATION claims proprietary right in the material disclosed hereon. This drawing is issued in confidence for engineering information only and may not be reproduced or used to manufacture any part shown hereon without permission from THE TECHNICAL MATERIEL CORPORATION to the user. This drawing is loaned for mutual assistance and is subject to recall at any time.

Property of:
THE TECHNICAL MATERIEL CORPORATION
MAMARONECK, NEW YORK

DETENT SPRING
1 1/2 TURNS
CAT. NO. 513393



NOTE:
STOPS AT POSITIONS 3 & 9
CONTACTS ARE ON THE FRONT OF THE FRONT SECTION AND ON THE REAR OF THE REAR SECTION.

SW-145 F

DUAL SECTION - 1 POLE - 7 ACTIVE POS.

REF COMMUNICATIONS PRODUCTS INC. MODEL 86 (MOD.)

F	1	Detent Portion Changed	8-12-60	2749	J.C.B.	ASJ.
E	2	Electrical Contacts Redesigned	4/8/59	5	ASJ.	ASJ.
I	1	REBORN				

ISSUE ITEM CHANGED FROM DATE CN. NO. DRAFTS CHECKER ENG. APP.

TOLERANCES SCALE: 5401-113 (MODEL 86 MOD.)
ALL OTHERS DEC. DIM. ± 1/64
FRAC. DIM. ± 1/64
ANGULAR DIM. ±

DRILL, PUNCH, COMMERCIAL STOCK SIZES AND MANUFACTURERS TOLERANCES ARE NOT INCLUDED.

1	TAC-1			4-8-59
REQ PER UNIT	MODEL	PROJECT NO.	ASS'Y. NO.	DATE
				USED ON

REQ. ITEM	PART NO.	DESCRIPTION	SYMBOL
//		THE TECHNICAL MATERIEL CORP. MAMARONECK, NEW YORK	
	STOCK SIZE		
//	//	SWITCH, ROTARY, BAND	
	MATERIAL	WEIGHT PER PC.	
//			
	TYPE & TEMPER	16 2/8/59	ASJ.
//		DRAWN	ELEC. DES. APP. MECH. DES. APP.
	HEAT TREAT. SPEC.	CHECKED	FINAL APPROVAL
//			
	FINISH & SPEC. NO.		SW-145 F