

IF IT IS FOUND DESIRABLE TO CHANGE ANY TOLERANCE OR OTHER DETAIL SPECIFIED ON THIS DRAWING NOTIFY THE PURCHASER PROMPTLY.
 MAXIMUM ALLOWABLE TOLERANCES HAVE BEEN DETERMINED AND DEVIATIONS WILL BE CAUSE FOR REJECTION.
 REMOVE ALL BURRS AND SHARP EDGES

FOR SPARE PARTS ONLY

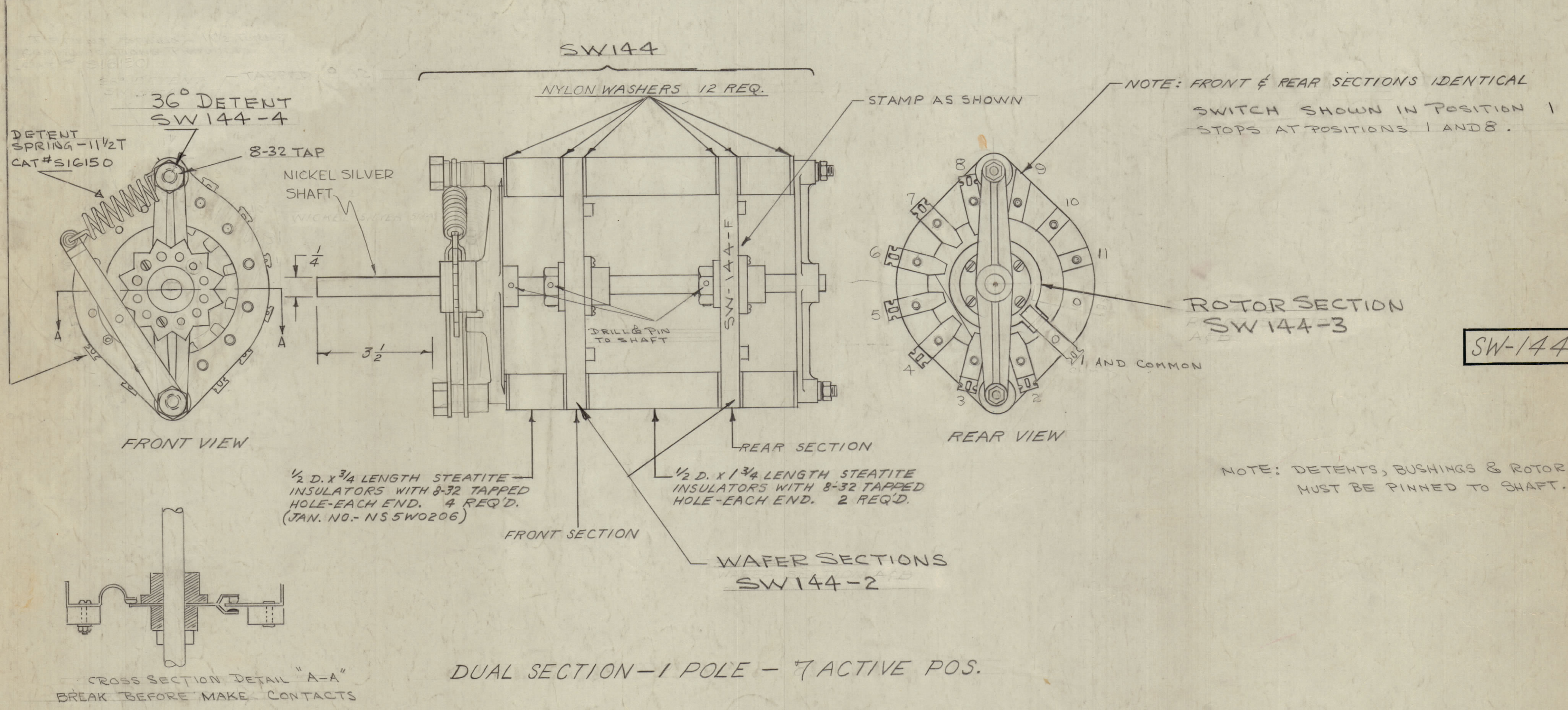
TMC No.	DESIGNATION
SW144-2	WAFER SECTION
SW144-3	ROTOR SECTION
SW144-4	DETENT SECTION

NOTICE TO PERSONS RECEIVING THIS DRAWING

THE TECHNICAL MATERIEL CORPORATION claims proprietary right in the material disclosed hereon. This drawing is issued in confidence for engineering information only and may not be reproduced or used to manufacture anything shown hereon without permission from THE TECHNICAL MATERIEL CORPORATION to the user. This drawing is loaned for mutual assistance and is subject to recall at any time.

Property of:
 THE TECHNICAL MATERIEL CORPORATION
 MAMARONECK, NEW YORK

NOTE
 MFR WILL NOT RIVET THIS CONTACT;
 CONTACT WILL BE MOUNTED WITH THE FOLLOWING HARDWARE:
 ONE - 2-56 X 7/16 BRASS, SILVER PLATED, RD HD M.S.
 ONE - 2-56 BRASS, SILVER PLATED, HEX NUT
 ONE - #2 BRONZE, SILVER PLATED, SPLIT WASHER



SW-144 G

ISSUE	ITEM	CHANGED FROM	DATE	CN. NO.	DRAFTS	CHECKER	ENG. APP.
G		SPARE PARTS ADDED	2-18-60	19296	GE	JCB	FB
F	1	Detent Portion Changed	8-12-60	2749	J.C.B.		
E	1	Cross Section Detail was Make Before Break (B.R.B.E.)	4-23-57	5	SC.	JCB	AKB
D	2	MFR. NOTE ADDED	4-9-57	4	JCB	JCB	AKB
D	1	RECTORIAL CLARIFIED					AJT
C	1	NOTE ADDED RE PINS	10/9/56	3	SCS	JCB	WJC
B	1	SHAFT NOTE ADDED	3/5/54	2	B	JCB	WJC
A	1	3 1/2" WAS 1 1/2" SHAFT	3/1/54	1	K	JCB	ARB

TOLERANCES		SCALE: S401-113 (MODEL 86MOD)
ALL	DEC. DIM. ±	DRILL, PUNCH, COMMERCIAL STOCK SIZES AND MANUFACTURERS TOLERANCES ARE NOT INCLUDED.
OTHERS	FRAC. DIM. ±	
	ANGULAR DIM. ±	

1	TAC-1	132	A-782	1-15-54
AMT. PER UNIT	MODEL	PROJECT NO.	ASS'Y. NO.	DATE

REQ. ITEM	PART NO.	DESCRIPTION	SYMBOL
	//	THE TECHNICAL MATERIEL CORP. MAMARONECK, NEW YORK	
	//	STOCK SIZE	
	//	ROTARY SWITCH, COUPLING	
	//	MATERIAL	
	//	WEIGHT PER PC.	
	//	TYPE & TEMPER	
	//	HEAT TREAT. SPEC.	
	//	FINISH & SPEC. NO.	