

IF IT IS FOUND DESIRABLE TO CHANGE ANY TOLERANCE OR OTHER DETAIL SPECIFIED ON THIS DRAWING NOTIFY THE PURCHASER PROMPTLY.

SW-143 C

MAXIMUM ALLOWABLE TOLERANCES HAVE BEEN DETERMINED AND DEVIATIONS WILL BE CAUSE FOR REJECTION. REMOVE ALL BURRS AND SHARP EDGES

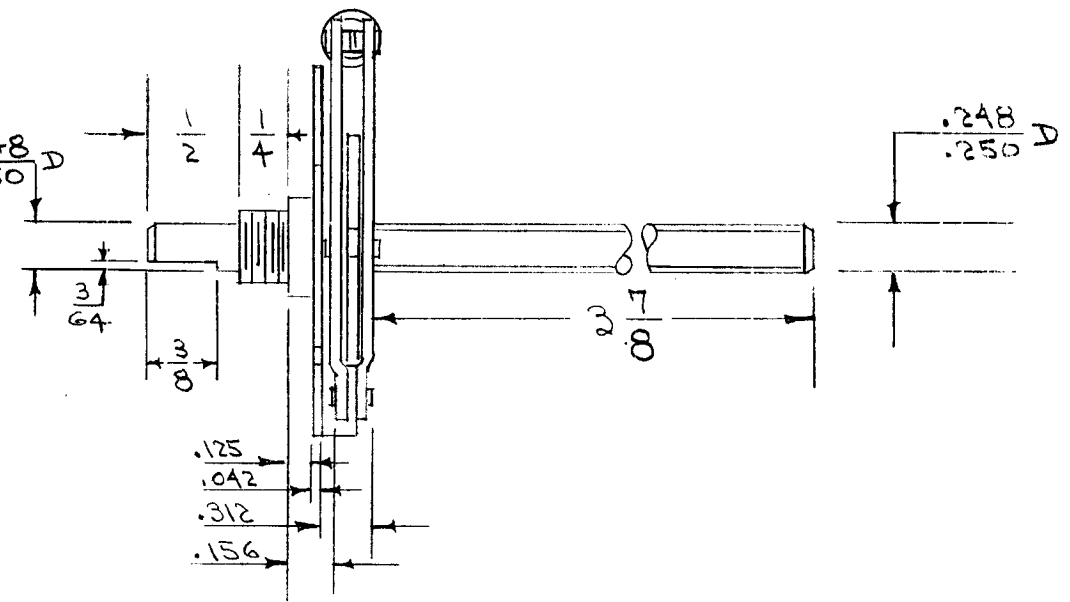
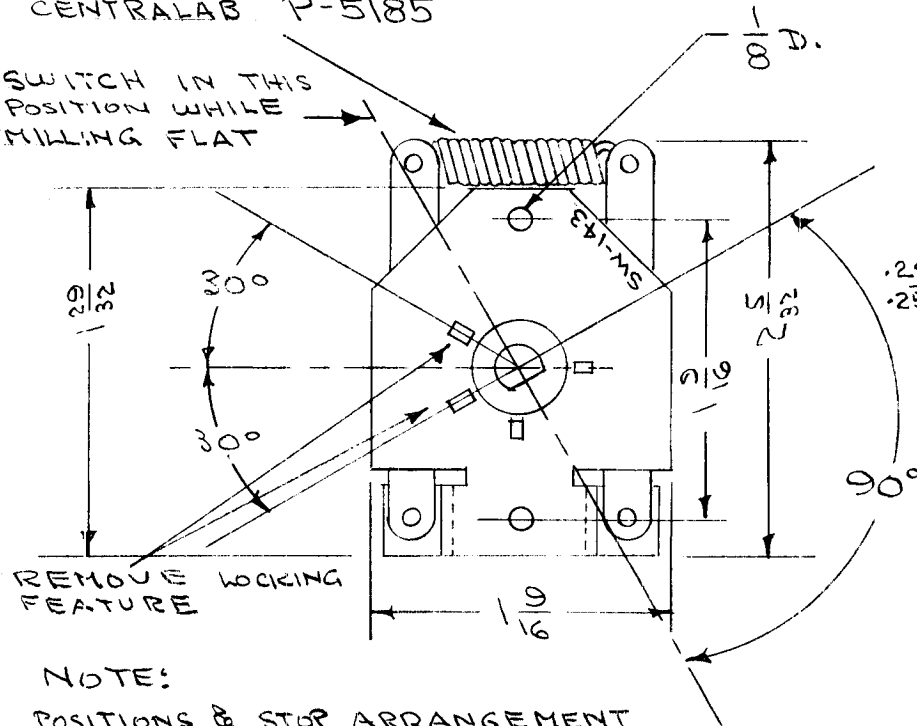
REF. PART UNIT

USED ON

2	TAC-1	132	SW-143	1-12-54
---	-------	-----	--------	---------

CENTRALAB P-5185

SWITCH IN THIS POSITION WHILE MILLING FLAT



NOTE:
POSITIONS & STOP ARRANGEMENT
2 POS. 60° INDEX

REF: CENTRALAB

REQ.	ITEM	PART NO.	DESCRIPTION	SYMBOL
			THE TECHNICAL MATERIEL CORP. MAMARONECK. NEW YORK	
STOCK SIZE			SWITCH INDEX	
STEEL				
MATERIAL		WEIGHT PER PC.		
TYPE & TEMPER		CDD. 7/30/53	ARB	WJC
HEAT TREAT. SPEC.		DRAWN	ELEC. DES. APP.	MECH. DES. APP.
FINISH & SPEC. NO.		SAE	ARB	WJC
		CHECKED	FINAL APPROVAL	
		SUPERCEDES PO-114	SW-143	C

ISSUE	ITEM	CHANGED FROM	DATE	CN. NO.	DRAFTS	CHECKER	ENG. APP.
C	3	PLATING INFO ADDED		3	WJC	WJC	WJC
B	2	SHAFT LENGTH INCREASED		2	CDD	WJC	WJC
A	1	SPRING PART NO. ADDED		1	CDD	WJC	WJC

TOLERANCES		SCALE
ALL OTHERS	DEC. DIM. $\pm .005$ FRAC. DIM. $\pm \frac{1}{64}$ ANGULAR DIM. $\pm \frac{1}{2}^\circ$	DRILL, PUNCH, COMMERCIAL STOCK SIZES AND MANUFACTURERS TOLERANCES ARE NOT INCLUDED.