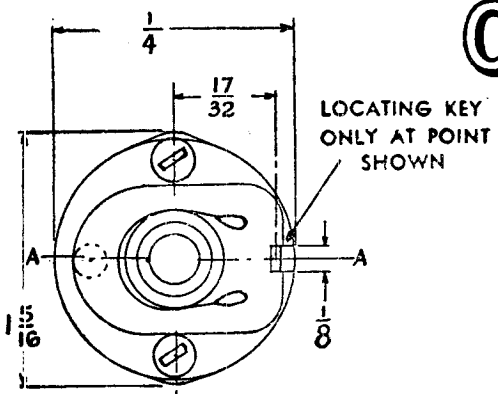


CUSTOMER'S SW-125
PART NO.

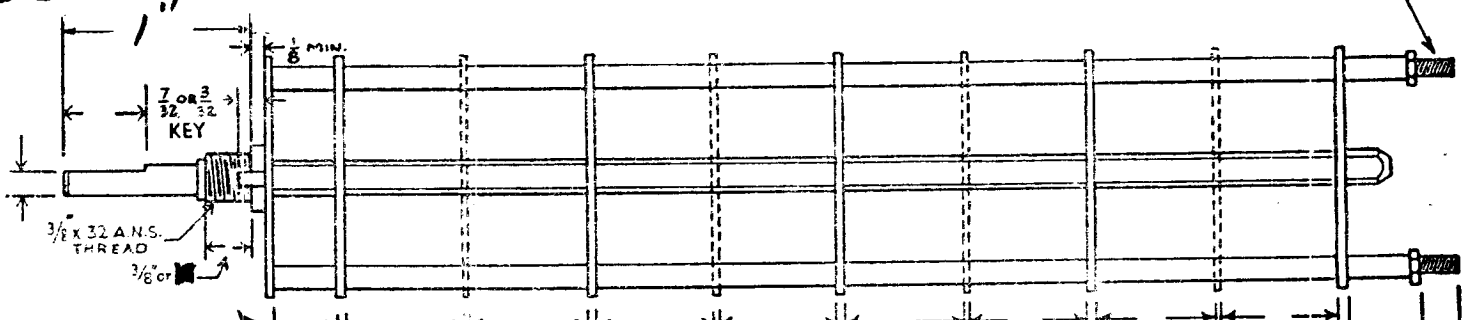
OAK TYPE F SWITCH

SW-125

4-40 THREAD

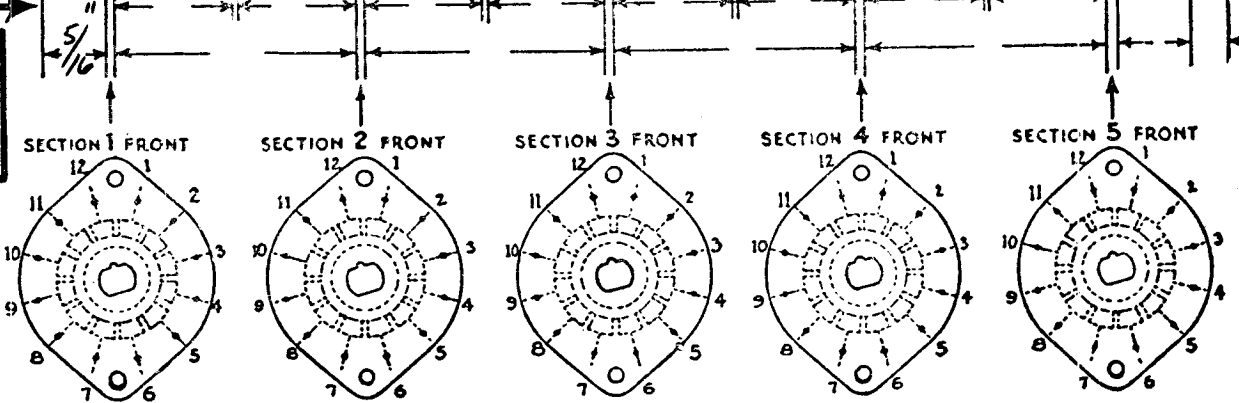


SHOW CUT AWAY PORTION OF FLAT IN BLACK AND GIVE ANGLE TO LINE A-A. $\pm 3^\circ$
STANDARD RMA KNURLED AND SLOTTED SHAFT ALSO AVAILABLE

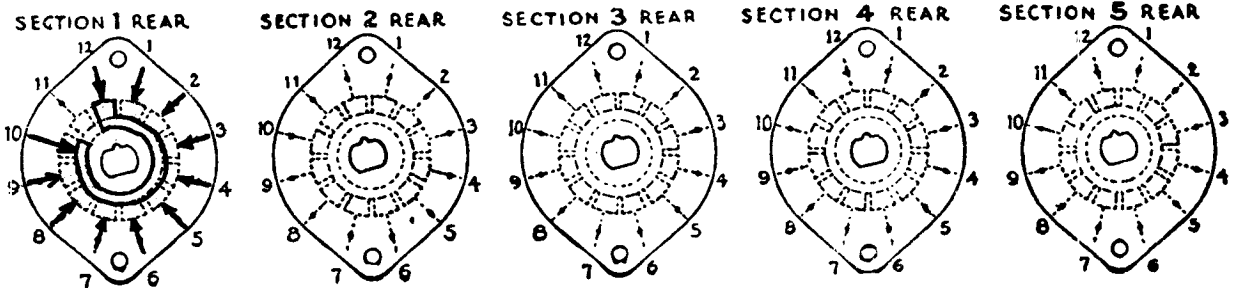
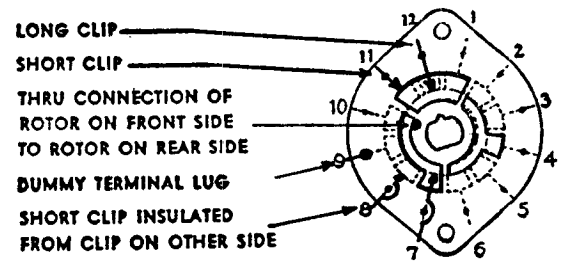


FRONT AND REAR OF SECTIONS VIEWED FROM FRONT OR KNOB END OF SWITCH IN EXTREME COUNTER-CLOCKWISE POSITION

NUMBER OF SECTIONS $\frac{1}{5}$
NUMBER OF POSITIONS $\frac{10}{10}$
ANGLE OF THROW 30° (30° OR 60°)



SYMBOLS USED IN MARKING PRINT



OUTLINE ROTOR BLADES AS SHOWN ABOVE WITH SWITCH IN EXTREME COUNTER-CLOCKWISE POSITION

CUSTOMER NOTES

S7, DCO

SW-125

SPECIFICATIONS

SHORTING TYPE CONTACTS NON-SHORTING IF NOT SPECIFIED SHORTING TYPE WILL BE SUPPLIED.
 INSULATION: $\frac{1}{16}$ BAKELITE $\frac{1}{8}$ MYCALEX SPECIFY IMPREGNATION IF REQUIRED.
 FINISH REQUIREMENTS: COMMERCIAL ; ARMY ; NAVY ; SALT TEST (IF ANY GIVE DETAILS) room
 CONTACTS AND ROTORS: SILVER PLATED BRASS ; SOLID SILVER ALLOY ; IF NOT SPECIFIED SILVER PLATED BRASS WILL BE SUPPLIED.
 MOUNTIN HARDWARE: SUPPLY 1 $\frac{3}{8}$ " - 32 NUTS 1/2" ACROSS FLATS; MATERIAL BR PLATING N.P.
1 $\frac{3}{8}$ " INTERNAL TOOTH LOCKWASHER; MATERIAL BR PLATING N.P.
 STAMP PART NUMBER SW-125 ON FRONT PLATE, YES NO

SUPERCEDES
AES032

DATE 10/22/57

OAK MANUFACTURING CO.
1260 CLYBORN AVE., CHICAGO 10, ILL.

CUSTOMER