

CUSTOMER'S SW-124
PART NO.

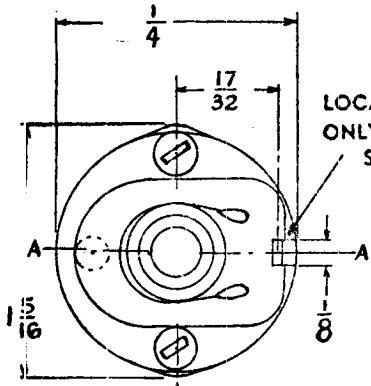
CUSTOMER

OAK MANUFACTURING CO.
1260 CLYBORN AVE., CHICAGO 10, ILL.

OAK TYPE F SWITCH

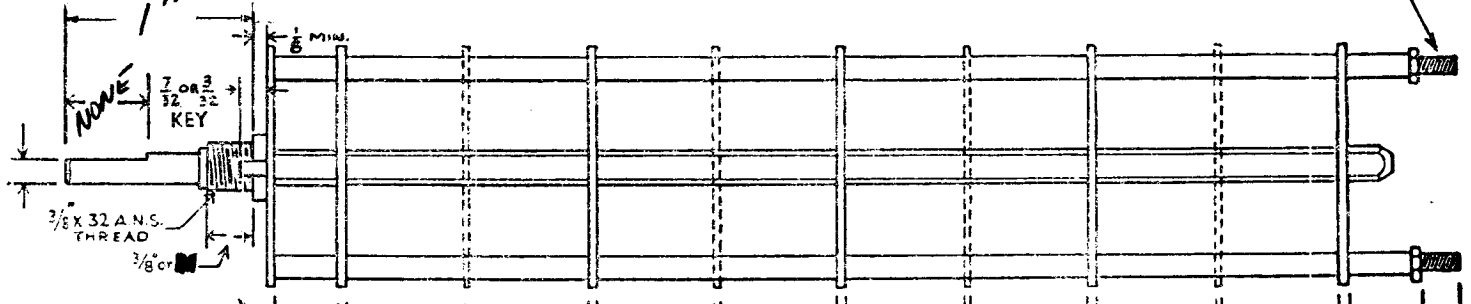
SW-124

4-40 THREAD



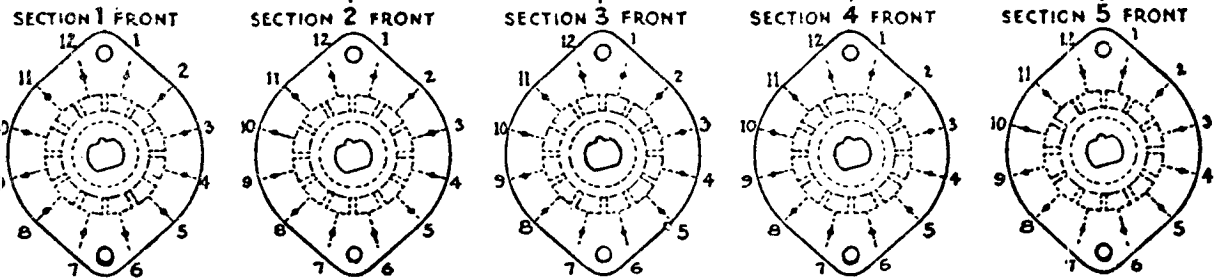
LOCATING KEY
ONLY AT POINT
SHOWN

SHOW CUT AWAY PORTION
OF FLAT IN BLACK AND GIVE
ANGLE TO LINE A-A. $\pm 3^\circ$
STANDARD RMA KNURLED AND
SLOTTED SHAFT ALSO AVAILABLE

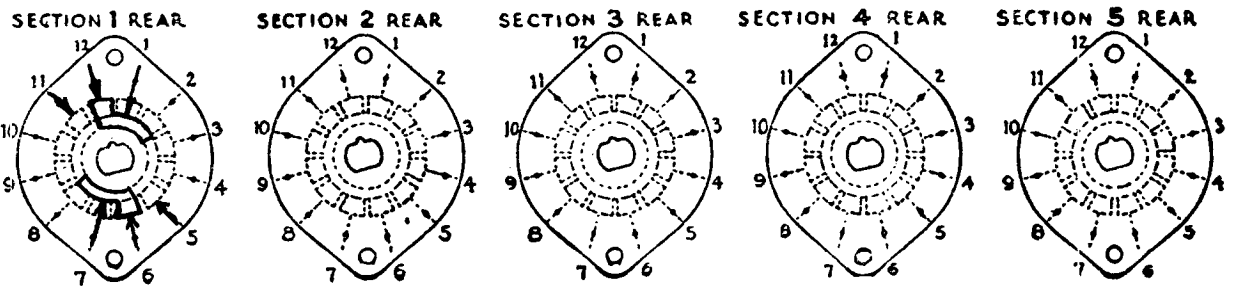
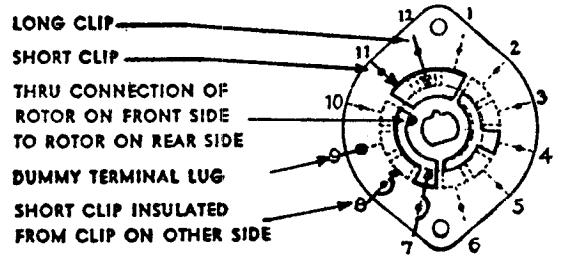


FRONT AND REAR
OF SECTIONS VIEW-
ED FROM FRONT OR
KNOB END OF SWITCH
IN EXTREME COUNTER-
CLOCKWISE POSITION

NUMBER OF SECTIONS $\frac{1}{2}$
NUMBER OF POSITIONS $\frac{1}{2}$
ANGLE OF THROW 30° (30° OR 60°)



SYMBOLS USED IN MARKING PRINT



OUTLINE ROTOR BLADES AS SHOWN ABOVE WITH
SWITCH IN EXTREME COUNTER-CLOCKWISE POSITION

SPECIFICATIONS

SHORTING TYPE CONTACTS NON-SHORTING IF NOT SPECIFIED SHORTING TYPE WILL BE SUPPLIED.
 INSULATION: $\frac{1}{16}$ " BAKELITE $\frac{1}{8}$ " MYCALEX SPECIFY IMPREGNATION IF REQUIRED.
 FINISH REQUIREMENTS: COMMERCIAL ; ARMY ; NAVY ; SALT TEST (IF ANY GIVE DETAILS) 200hr
 CONTACTS AND ROTORS: SILVER PLATED BRASS ; SOLID SILVER ALLOY ; IF NOT SPECIFIED SILVER
 PLATED BRASS WILL BE SUPPLIED.
 MOUNTING HARDWARE: SUPPLY 1 $\frac{3}{8}$ " - 32 NUTS 1/2" ACROSS FLATS; MATERIAL BR PLATING NICKEL
1 $\frac{3}{8}$ " INTERNAL TOOTH LOCKWASHER; MATERIAL BR PLATING "
 STAMP PART NUMBER SW-124 ON FRONT PLATE, YES NO
 (NUMBER)

CUSTOMER NOTES

SS,6 DCO
SW-124
SUPERCEDES.
AES031
ARB