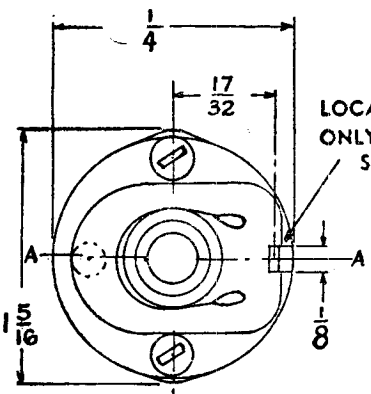


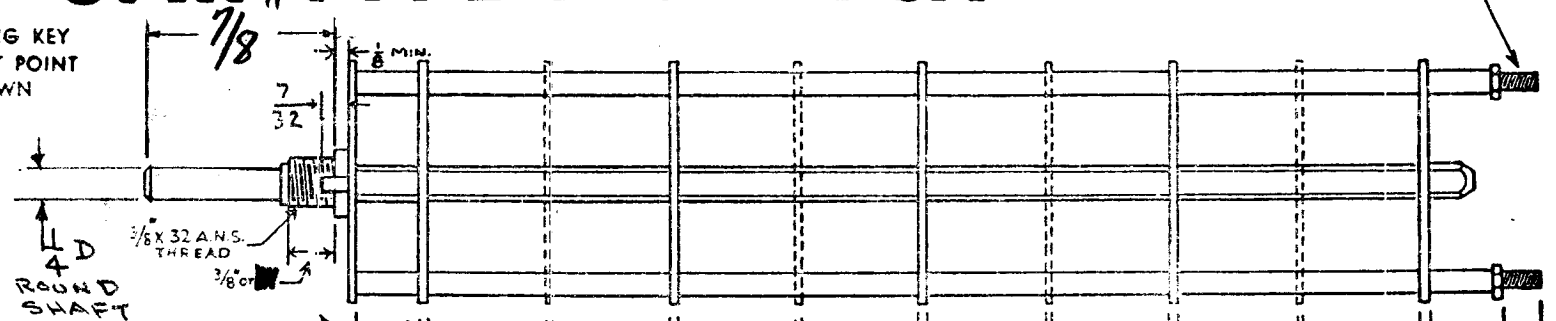
CUSTOMER'S SW-120
PART NO.

OAK TYPE F SWITCH

SW-120
4-40 THREAD



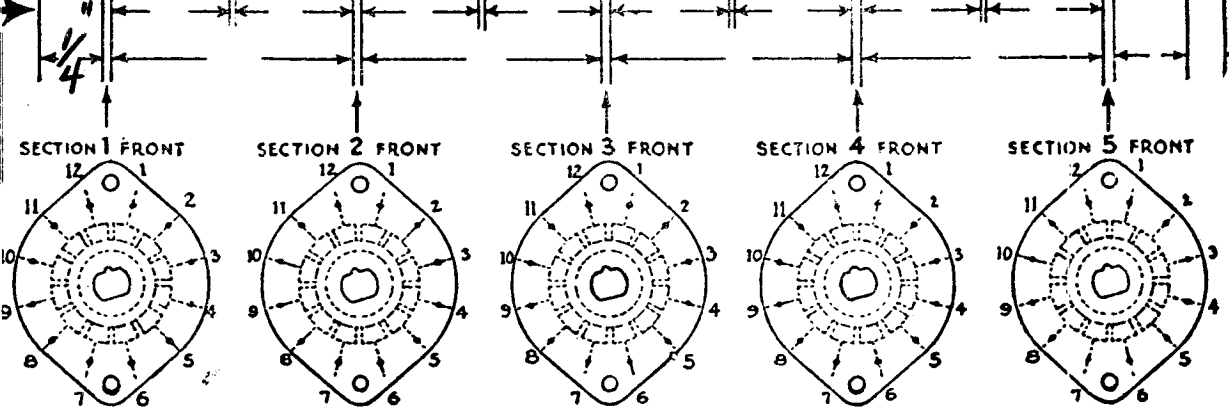
LOCATING KEY ONLY AT POINT SHOWN



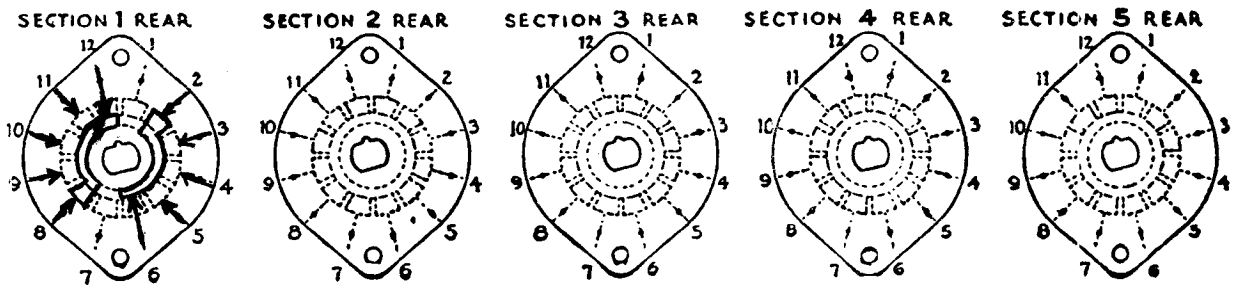
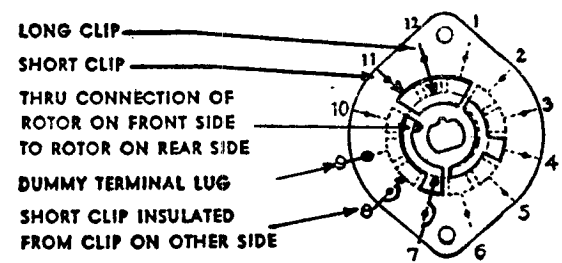
SHOW CUT AWAY PORTION OF FLAT IN BLACK AND GIVE ANGLE TO LINE A-A. $\pm 3^\circ$ STANDARD RMA KNURLED AND SLOTTED SHAFT ALSO AVAILABLE

FRONT AND REAR OF SECTIONS VIEWED FROM FRONT OR KNOB END OF SWITCH IN EXTREME COUNTER-CLOCKWISE POSITION

NUMBER OF SECTIONS $\frac{1}{4}$
NUMBER OF POSITIONS $\frac{4}{30^\circ}$
ANGLE OF THROW 30° (30° OR 60°)



SYMBOLS USED IN MARKING PRINT



OUTLINE ROTOR BLADES AS SHOWN ABOVE WITH SWITCH IN EXTREME COUNTER-CLOCKWISE POSITION

CUSTOMER NOTES

S2 S3, DCU
2P/4POS/1SECT

SPECIFICATIONS

SHORTIN TYPE CONTACTS NON-SHORTING IF NOT SPECIFIED SHORTING TYPE WILL BE SUPPLIED.
INSULATION: $\frac{1}{16}$ BAKELITE $\frac{1}{8}$ MYCALEX SPECIFY IMPREGNATION IF REQUIRED.
FINISH REQUIREMENTS: COMMERCIAL ; ARMY ; NAVY ; SALT TEST (IF ANY GIVE DETAILS) 200M
CONTACTS AND ROTORS: SILVER PLATED BRASS ; SOLID SILVER ALLOY ; IF NOT SPECIFIED SILVER PLATED BRASS WILL BE SUPPLIED.
MOUNTING HARDWARE: SUPPLY 1 $\frac{3}{8}$ " - 32 NUTS $\frac{1}{2}$ " ACROSS FLATS; MATERIAL BR PLATING N.P.
1 $\frac{3}{8}$ " INTERNAL TOOTH LOCKWASHER; MATERIAL P.B. PLATING N.P.
STAMP PART NUMBER SW-120 (NUMBER) ON FRONT PLATE, YES NO

Supersedes AFS026
2-12-53

SW-120
DATE 8/1/51

CUSTOMER
OAK MANUFACTURING CO.
1260 CLYBORN AVE., CHICAGO 10, ILL.