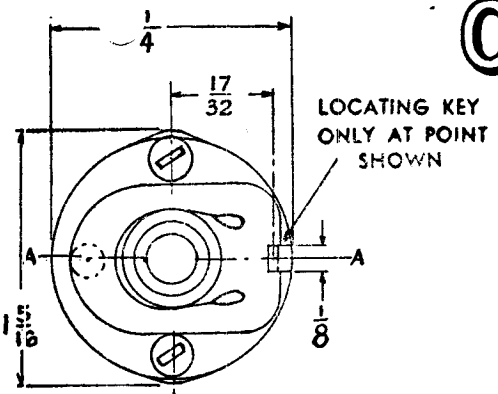


CUSTOMER'S SW-118
PART NO.

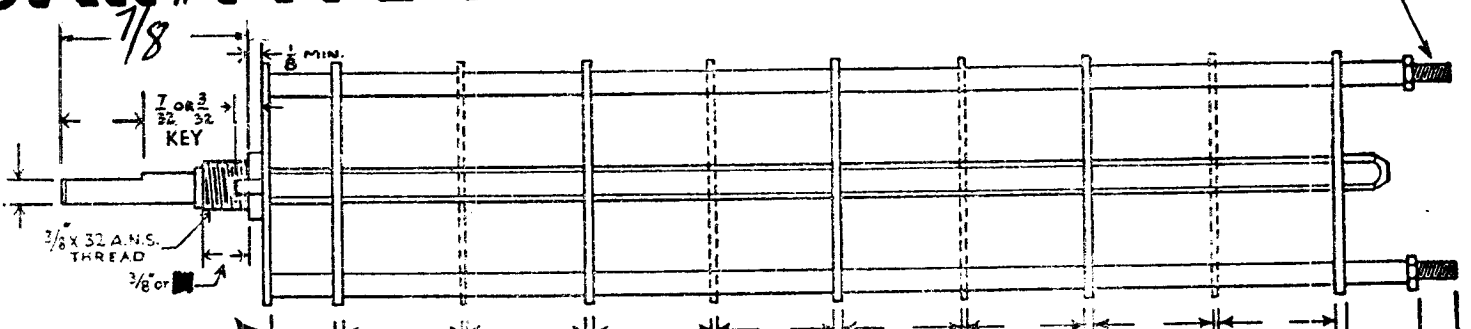
OAK TYPE F SWITCH

SW-118

4-40 THREAD



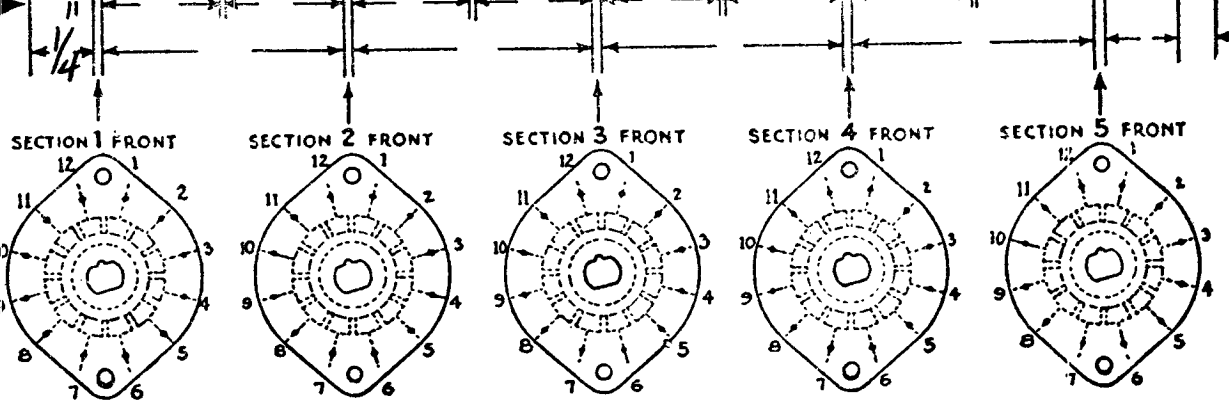
LOCATING KEY
ONLY AT POINT
SHOWN



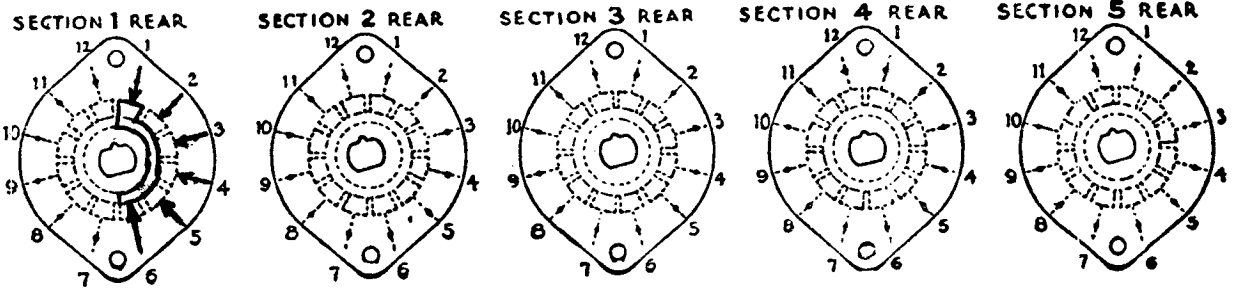
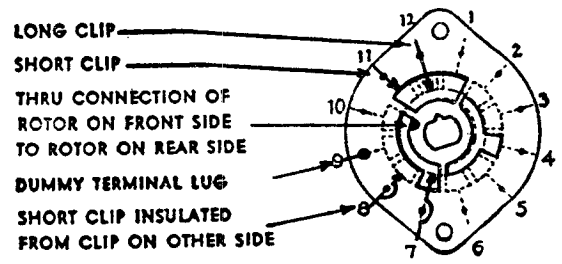
SHOW CUT AWAY PORTION
OF FLAT IN BLACK AND GIVE
ANGLE TO LINE A-A. $\pm 3^\circ$
STANDARD RMA KNURLED AND
SLOTTED SHAFT ALSO AVAILABLE

FRONT AND REAR
OF SECTIONS VIEWED
FROM FRONT OR
KNOB END OF SWITCH
IN EXTREME COUNTER-
CLOCKWISE POSITION

NUMBER OF SECTIONS $\frac{1}{5}$
NUMBER OF POSITIONS $\frac{5}{5}$
ANGLE OF THROW 30° (30° OR 60°)



SYMBOLS USED IN MARKING PRINT



CUSTOMER NOTES

OUTLINE ROTOR BLADES AS SHOWN ABOVE WITH
SWITCH IN EXTREME COUNTER-CLOCKWISE POSITION

SPECIFICATIONS

SHORTING TYPE CONTACTS NON-SHORTING IF NOT SPECIFIED SHORTING TYPE WILL BE SUPPLIED.
INSULATION: $\frac{1}{16}$ BAKELITE $\frac{1}{8}$ MYCALEX SPECIFY IMPREGNATION IF REQUIRED.
FINISH REQUIREMENTS: COMMERCIAL ; ARMY ; NAVY ; SALT TEST (IF ANY GIVE DETAILS) 200 hr
CONTACTS AND ROTORS: SILVER PLATED BRASS ; SOLID SILVER ALLOY ; IF NOT SPECIFIED SILVER
PLATED BRASS WILL BE SUPPLIED.
MOUNTING HARDWARE: SUPPLY 1 $\frac{3}{8}$ " - 32 NUTS 1/2" ACROSS FLATS; MATERIAL BR PLATING N.P.
1 $\frac{3}{8}$ " INTERNAL TOOTH LOCKWASHER; MATERIAL P.B. PLATING N.P.
STAMP PART NUMBER SW-118 ON FRONT PLATE, YES NO

S6, DCU
1P/5 POS/1 SECT

SUPERCEDES AES024
2-12-53

SW-118
DATE 8/1/51

CUSTOMER
OAK MANUFACTURING CO.
1260 CLYBORN AVE., CHICAGO 10, ILL.