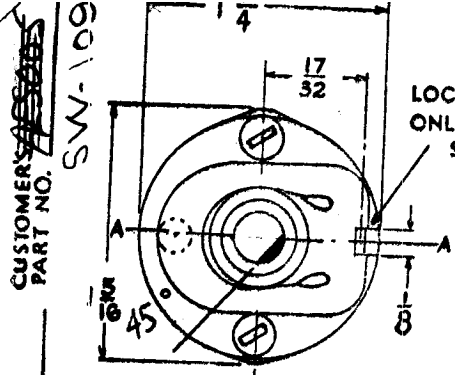
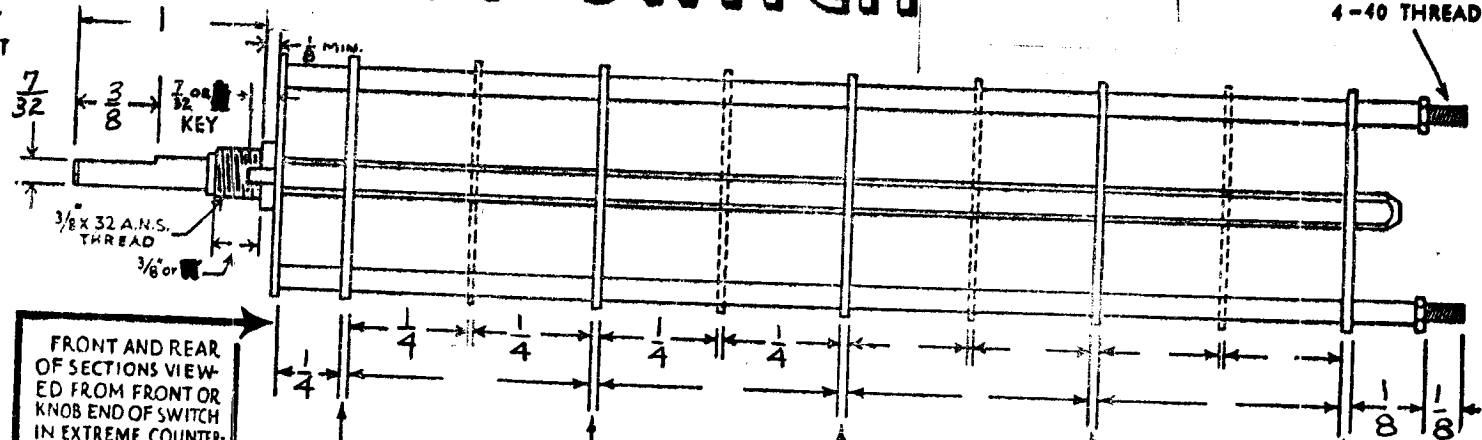


# OAK TYPE F SWITCH

MODEL XFK SW-109  
4-40 THREAD



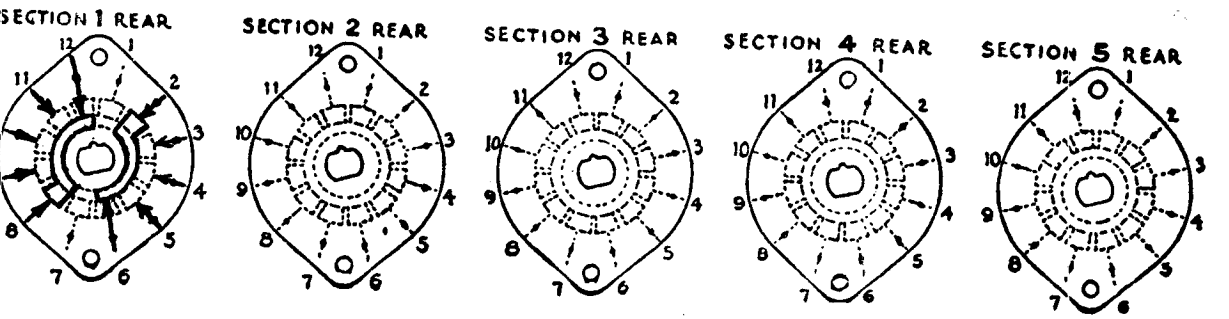
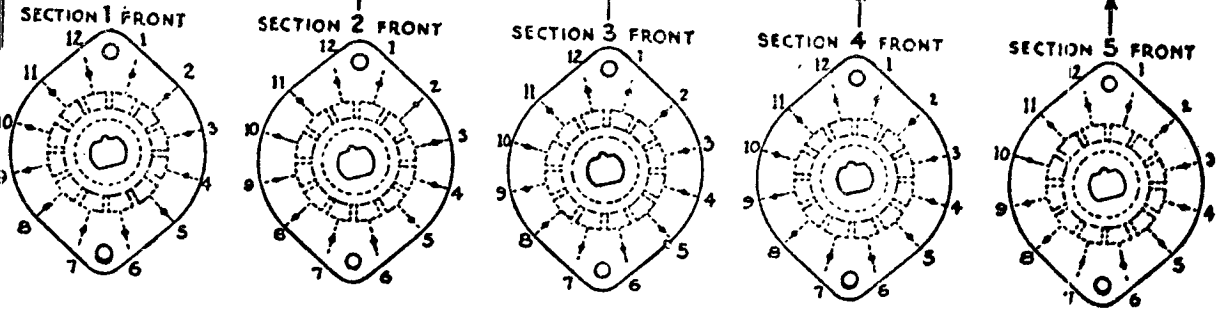
LOCATING KEY ONLY AT POINT SHOWN



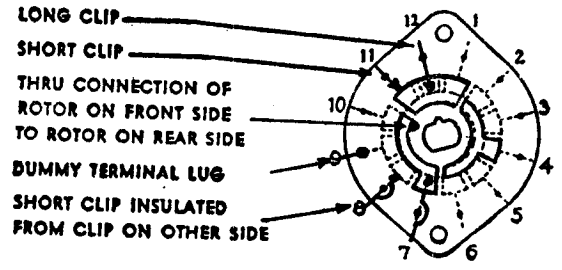
SHOW CUT AWAY PORTION OF FLAT IN BLACK AND GIVE ANGLE TO LINE A-A.  $\pm 3^\circ$  STANDARD RMA KNURLED AND SLOTTED SHAFT ALSO AVAILABLE

FRONT AND REAR OF SECTIONS VIEWED FROM FRONT OR KNOB END OF SWITCH IN EXTREME COUNTER-CLOCKWISE POSITION

NUMBER OF SECTIONS 3  
NUMBER OF POSITIONS 4  
ANGLE OF THROW 30 (30° OR 60°)



SYMBOLS USED IN MARKING PRINT



OUTLINE ROTOR BLADES AS SHOWN ABOVE WITH SWITCH IN EXTREME COUNTER-CLOCKWISE POSITION

### SPECIFICATIONS

SHORTING TYPE CONTACTS  NON-SHORTING  IF NOT SPECIFIED SHORTING TYPE WILL BE SUPPLIED.  
INSULATION:  $\frac{1}{16}$ " BAKELITE   $\frac{1}{8}$ " MYCALEX  SPECIFY IMPREGNATION IF REQUIRED.  
FINISH REQUIREMENTS: COMMERCIAL ; ARMY ; NAVY ; SALT TEST (IF ANY GIVE DETAILS) 200 HR  
CONTACTS AND ROTORS: SILVER PLATED BRASS ; SOLID SILVER ALLOY ; IF NOT SPECIFIED SILVER PLATED BRASS WILL BE SUPPLIED.  
MOUNTAIN HARDWARE: SUPPLY 1  $\frac{3}{8}$ " - 32 NUTS  $\frac{1}{2}$ " ACROSS FLATS; MATERIAL \_\_\_\_\_ PLATING \_\_\_\_\_  
STAMP PART NUMBER SW-109  $\frac{3}{8}$ " INTERNAL TOOTH LOCKWASHER; MATERIAL \_\_\_\_\_ PLATING \_\_\_\_\_  
(NUMBER) ON FRONT PLATE, YES  N

### CUSTOMER NOTES

- ① Sections 1, 2, and 3 identical switching
- ② Sections 1 and 2 bakelite
- ③ Section 3 mycalex

USED ON Model XFK A-601

SW-109

XFK SI

SUPERCEDES DATE 3/5/57  
AES005

OAK MANUFACTURING CO.  
1260 CLYBORN AVE., CHICAGO 10, ILL.  
47568-FXB

CUSTOMER THE TECHNICAL MATERIEL CORPORATION MAMARONECK, N. Y.

CUSTOMER PART NO. SW-109