

STANDARD DRAWING

CODE	CIRCUIT ARRANGEMENT			POLES AND THROWS	MFGR PT/NO
	A	B	C		
A	ON	OFF	ON	4PDT	7663
B	ON	NONE	ON	4PDT	7665
C	ON	NONE	OFF	4PST	7661
D	ON	OFF	ON*	4PDT	7671
E	ON	NONE	ON*	4PDT	7675

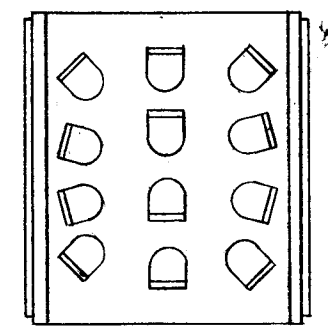
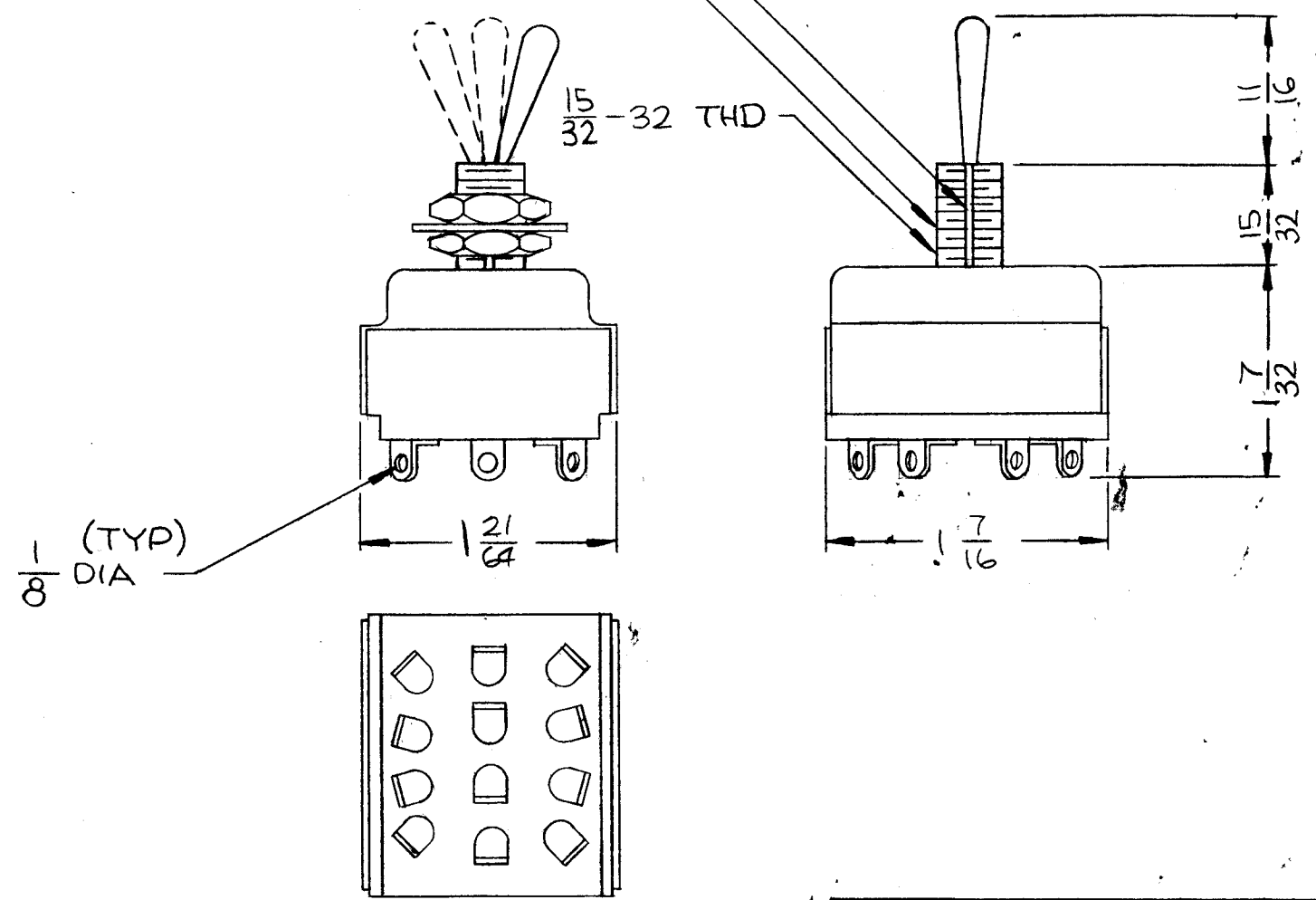
Ø
 ST109

REVISIONS					
SYM	DESCRIPTION	DATE	E.M.N. NO.	DRAFT	CHKD APPD
Ø	ORIGINAL RELEASE FOR PRODUCTION	10/28/66	Ø	CV	

* MOMENTARY CONTACT

~NOTE~
 KEYWAY ON "C" SIDE OF SWITCH. CIRCUIT IS MADE ON SIDE OPPOSITE THROW OF LEVER.

HARDWARE NOT SHOWN FOR CLARITY .035 DEEP X .068 WIDE KEYWAY



SPECIFICATION

CONTACT ARRANGEMENT: SEE CHART
 VOLTAGE RATING: 115 VAC, 28 VDC
 CURRENT RATING: 10 AMP @115 VAC
 20 AMP @28 VDC

TERMINAL:
 TYPE: SOLDER LUG
 QUANTITY: 12
 STYLE: OPTIONAL

MOUNTING: SINGLE HOLE

FINISH: BUSHING AND LEVER DULL NICKEL, OTHER METAL AREAS TO BE PLATED TO RESIST CORROSION (TYPE OPTIONAL)

SEAL: SILICONE SEAL BETWEEN LEVER AND BUSHING

MARKING: CIRCUIT DESIGNATION TO APPEAR ON UNIT. METHOD OPTIONAL.

TMC PART NO. SHALL BE IN THE FOLLOWING FORM

ST109-B

BASIC DWG NO

CIRCUIT ARRANGEMENT (SEE CHART)

REQ'D.	ITEM	PART NUMBER	DESCRIPTION	SYMBOL
BUTLER LIST OF MATERIAL				
MATERIAL		THE TECHNICAL MATERIEL CORP. MAMARONECK, NEW YORK		
FINISH		SWITCH, TOGGLE		
UNLESS OTHERWISE SPECIFIED DIMENSIONS ARE IN INCHES AND INCLUDE CHEMICALLY APPLIED OR PLATED FINISHES		DRAWN <i>WTO</i> CHECKED <i>Hoe</i> ELECT. DES <i>YC</i> MECH. DES <i>W. L. ...</i>	DATE 10.13.66 DATE 10/13/66 DATE 10-27-66	FINAL APPROVAL <i>ZB</i> DATE 10/28/66 SHEET
DECIMALS .X ± .05 .XX ± .01 .XXX ± .005		FRACTIONS ± 1/64 ANGLES ± 0° 30'		TOLERANCES
THE CONTENTS OF THIS DRAWING ARE THE EXCLUSIVE PROPERTY OF THE TECHNICAL MATERIEL CORP. ITS UNAUTHORIZED USE OR REPRODUCTION IN WHOLE OR IN PART IS STRICTLY FORBIDDEN.				

KMCU-2	
Q'TY./UNIT	MODEL USED ON
SCALE	ASS'Y. NO.
CODE	S401-371

NOTES