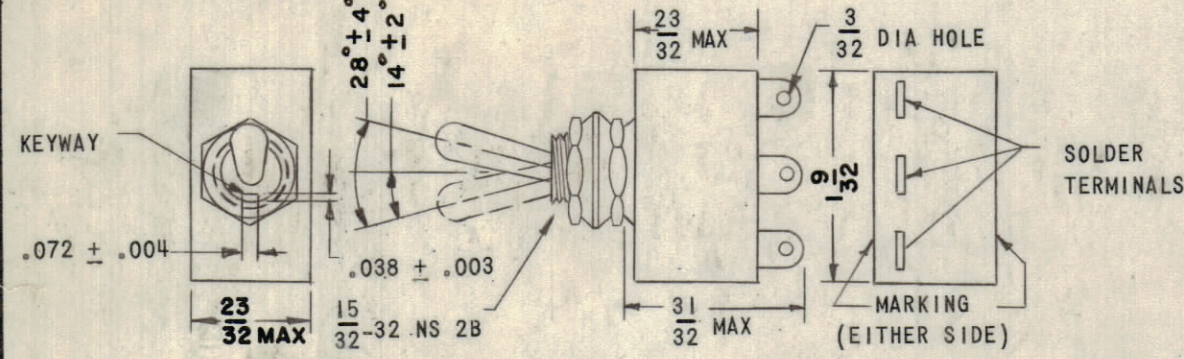
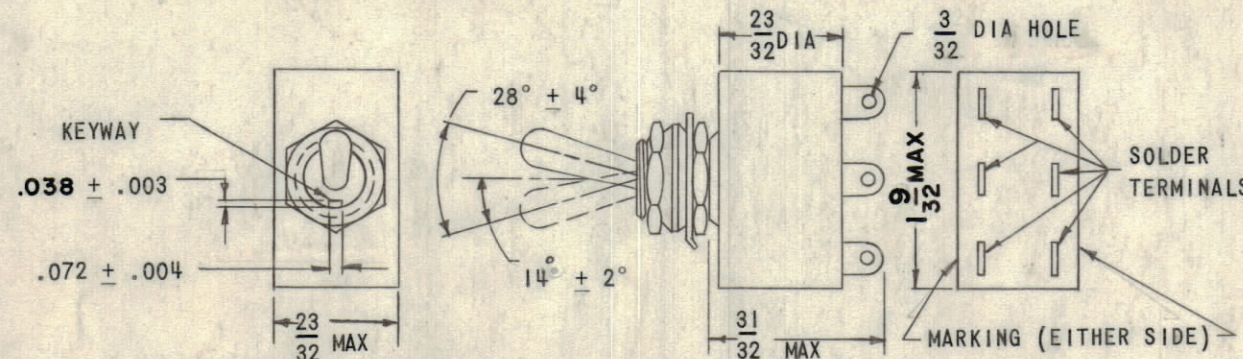


ST12 SWITCHES, TOGGLE SINGLE POLE



ST22 SWITCHES, TOGGLE DOUBLE POLE

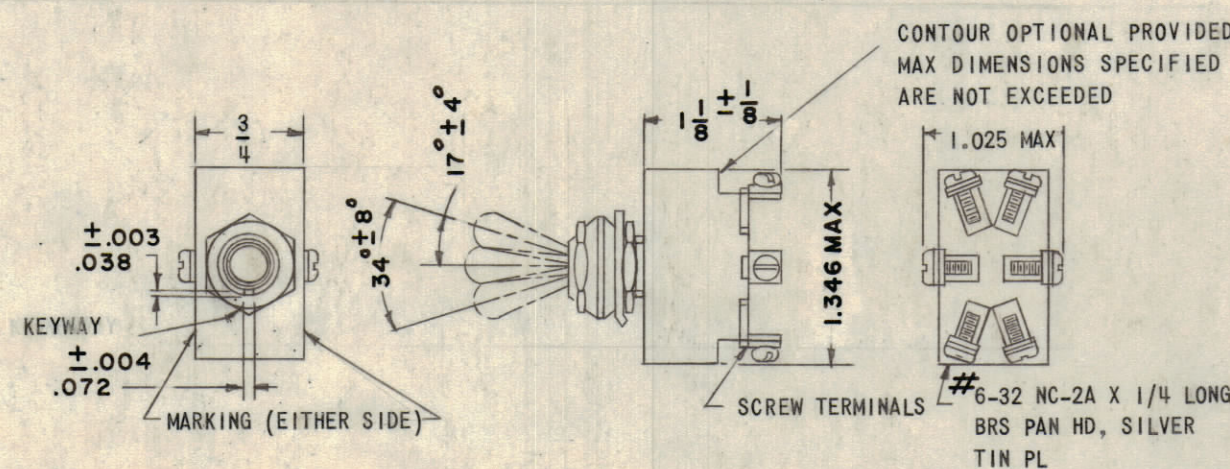
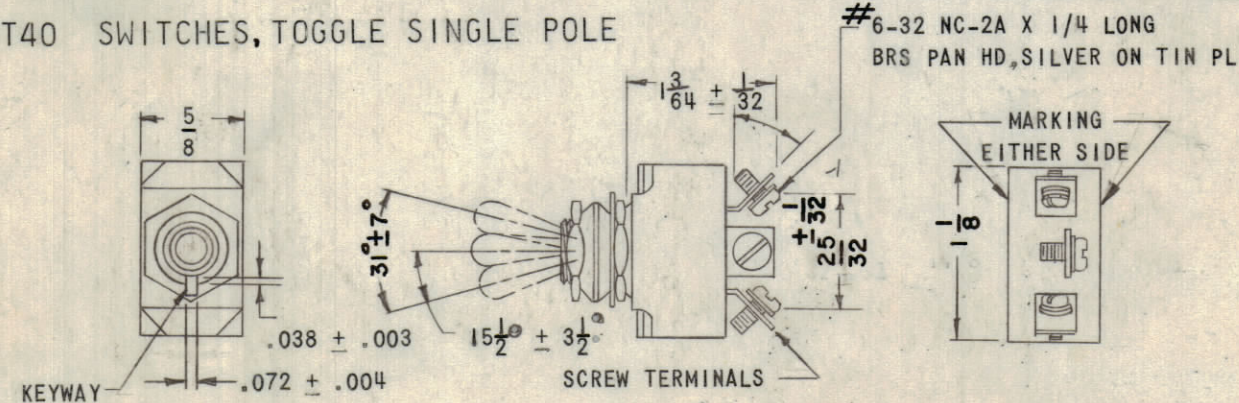


REVISIONS						
ZONE	LTR	DESCRIPTION	DATE	E.M.N.NO	DRAFT	CHKD APPD
	E	REDRAWN AND REVISED (UPDATED).	4.17.67	17936	W.H.W	<i>[Signature]</i>

CIRCUIT WITH TOGGLE LEVER IN				
TMC TYPE DESIGNATION	UP POSITION	CENTER POSITION	DOWN POSITION (KEYWAY SIDE)	MS PART NO.
ST12A	ON	NONE	OFF	MS25098-22
ST12D	ON	NONE	ON	MS25098-23
ST12B	ON	NONE	MOM OFF	MS25098-29
ST12C	OFF	NONE	MOM ON	MS25098-30

CIRCUIT WITH TOGGLE LEVER IN				
TMC TYPE DESIGNATION	UP POSITION	CENTER POSITION	DOWN POSITION (KEYWAY SIDE)	MS PART NO.
ST22K	ON	NONE	OFF	MS25100-22
ST22N	ON	NONE	ON	MS25100-23
ST22L	ON	NONE	MOM OFF	MS25100-29
ST22M	OFF	NONE	MOM ON	MS25100-30

ST40 SWITCHES, TOGGLE SINGLE POLE

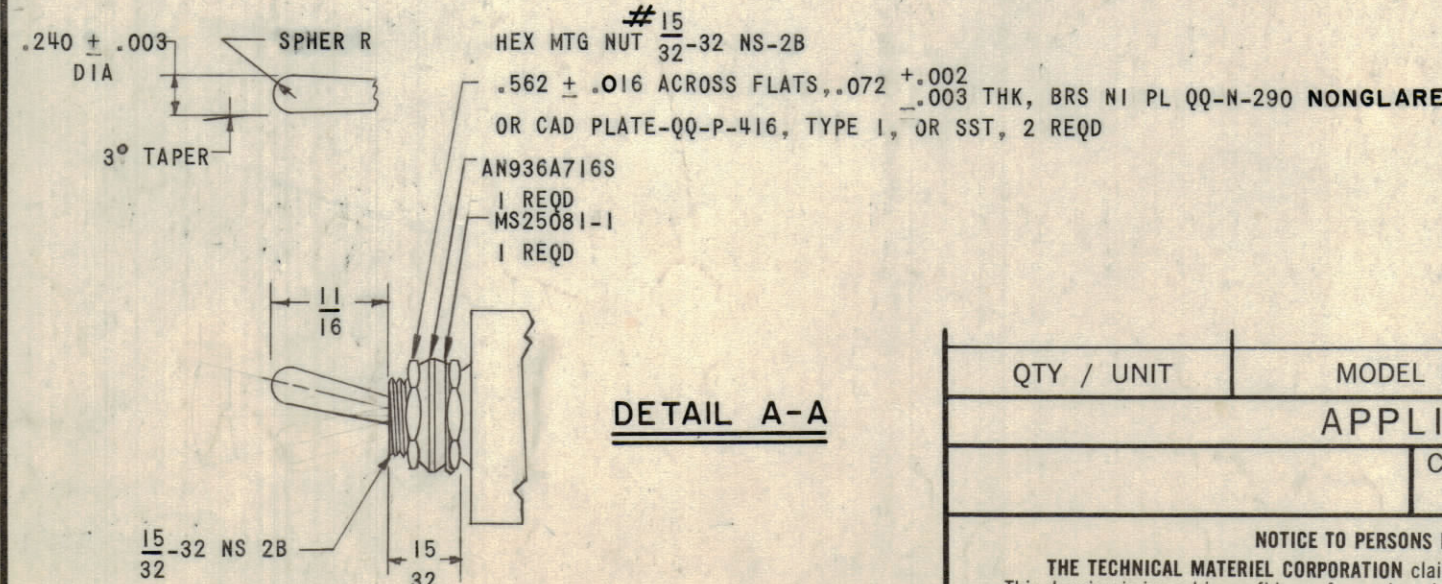
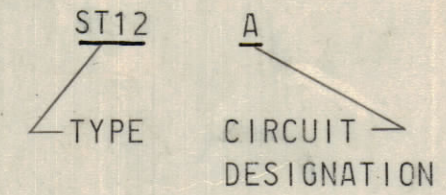


- NOTE:
1. ALL DIMENSIONS IN INCHES.
 2. UNLESS OTHERWISE SPECIFIED, TOLERANCES ARE ±1/64 ON FRACTIONS AND ±0.5° ON ANGLES.
 3. SWITCHES ON THIS STANDARD ARE NOT SEALED SWITCHES
 4. ALL SWITCHES ON THIS STANDARD ARE DESIGNED SO THAT THE DIRECTION OF MOVEMENT OF THE SWITCH MECHANISM, IS OPPOSITE TO THAT OF THE LEVER.
 5. MAXIMUM WEIGHT IS 0.10 POUND.
 6. MARK ALL SWITCHES AS DESIGNATED, ONLY ST___ NUMBER SHALL BE MARKED.
 7. FOR HARDWARE SEE DETAIL A-A.

CIRCUIT WITH TOGGLE LEVER IN				
TMC TYPE DESIGNATION	UP POSITION	CENTER POSITION	DOWN POSITION (KEYWAY SIDE)	MS PART NO.
ST40E	ON	OFF	ON	MS35058-21
ST40A	ON	NONE	OFF	MS35058-22
ST40D	ON	NONE	ON	MS35058-23
	ON	OFF	NONE	MS35058-24
	ON	MOM OFF	NONE	MS35058-25
ST40F	ON	NONE	MOM ON	MS35058-26
ST40G	MOM ON	OFF	MOM ON	MS35058-27
	NONE	OFF	MOM ON	MS35058-28
ST40B	ON	NONE	MOM OFF	MS35058-29
ST40C	OFF	NONE	MOM ON	MS35058-30
ST40H	ON	OFF	MOM ON	MS35058-31

CIRCUIT WITH TOGGLE LEVER IN				
TMC TYPE DESIGNATION	UP POSITION	CENTER POSITION	DOWN POSITION (KEYWAY SIDE)	MS PART NO.
ST50P	ON	OFF	ON	MS35059-21
ST50K	ON	NONE	OFF	MS35059-22
ST50N	ON	NONE	ON	MS35059-23
	ON	OFF	NONE	MS35059-24
	ON	MOM OFF	NONE	MS35059-25
ST50R	ON	NONE	MOM ON	MS35059-26
ST50S	MOM ON	OFF	MOM ON	MS35059-27
	NONE	OFF	MOM ON	MS35059-28
ST50L	ON	NONE	MOM ON	MS35059-29
ST50M	OFF	NONE	MOM ON	MS35059-30
ST50T	ON	OFF	MOM ON	MS35059-31

TMC PART NO. EXAMPLE



QTY / UNIT	MODEL USED ON	ASS'Y NO.
APPLICATION		
CODE		

NOTICE TO PERSONS RECEIVING THIS DRAWING
 THE TECHNICAL MATERIEL CORPORATION claims proprietary right in the material disclosed hereon. This drawing is issued in confidence for engineering information only and may not be reproduced or used to manufacture anything shown hereon without permission from THE TECHNICAL MATERIEL CORPORATION to the user. This drawing is loaned for mutual assistance and is subject to recall at any time.

REF: MIL STD 242 AND REFERENCE MS PART NUMBER ON CHART

QTY. REQ.	ITEM	PART NO.	DESCRIPTION	SYMBOL
LIST OF MATERIAL				
THE TECHNICAL MATERIEL CORP. MAMARONECK, NEW YORK				
SWITCHES, TOGGLE SINGLE AND DOUBLE POLE				
FINAL APPROVAL		DATE		C 82679 ST E
MECH. DES. <i>[Signature]</i>		DATE 4-18-67		
ELECT. DES.		DATE		
CHECKED <i>[Signature]</i>		DATE 4/18/67		
DRAWN <i>[Signature]</i>		DATE 4/12/67		SCALE
MATERIAL SEE SPECS		SIZE CODE IDENT.NO, DWG NO.		ISSUE
FINISH SEE DETAIL A-A		C 82679 ST		E
SHEET				OF