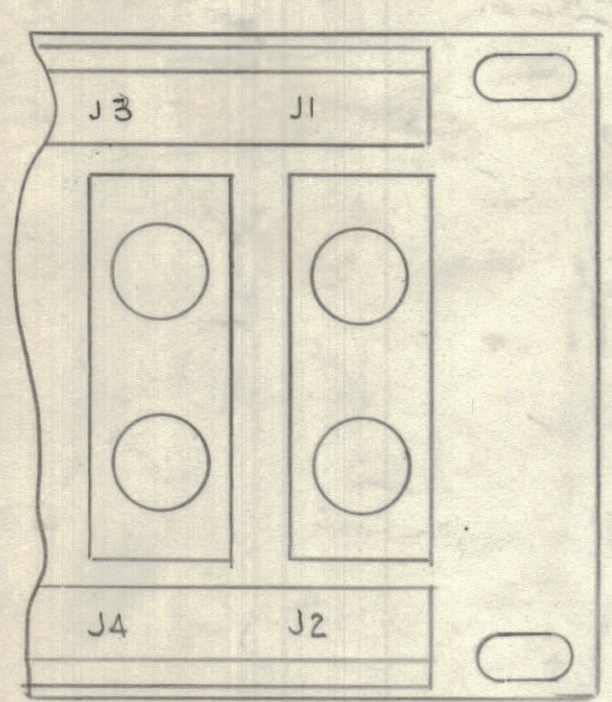
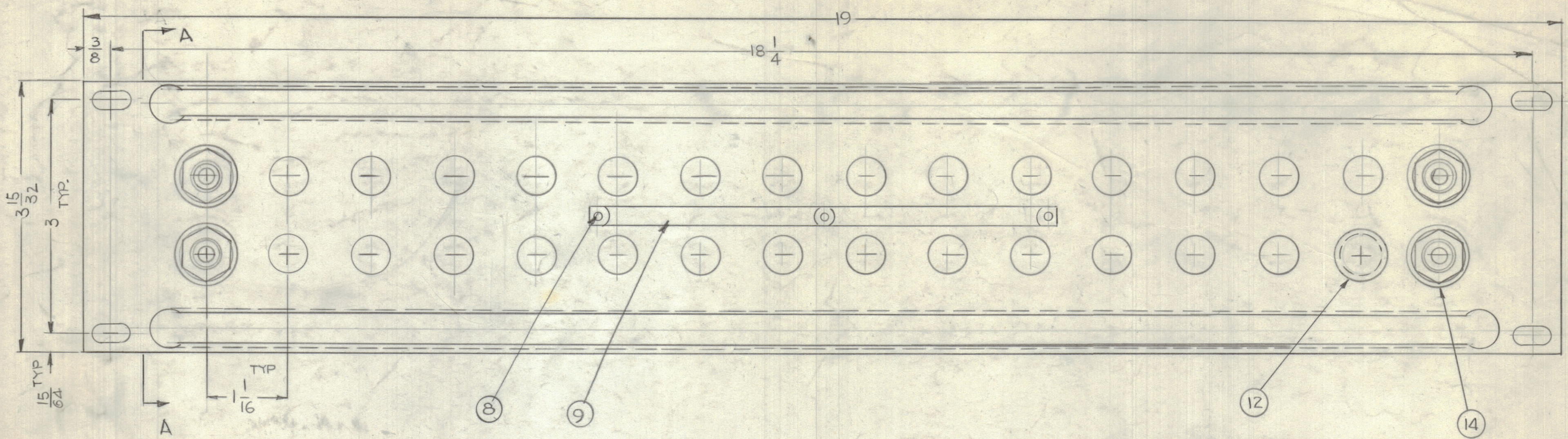
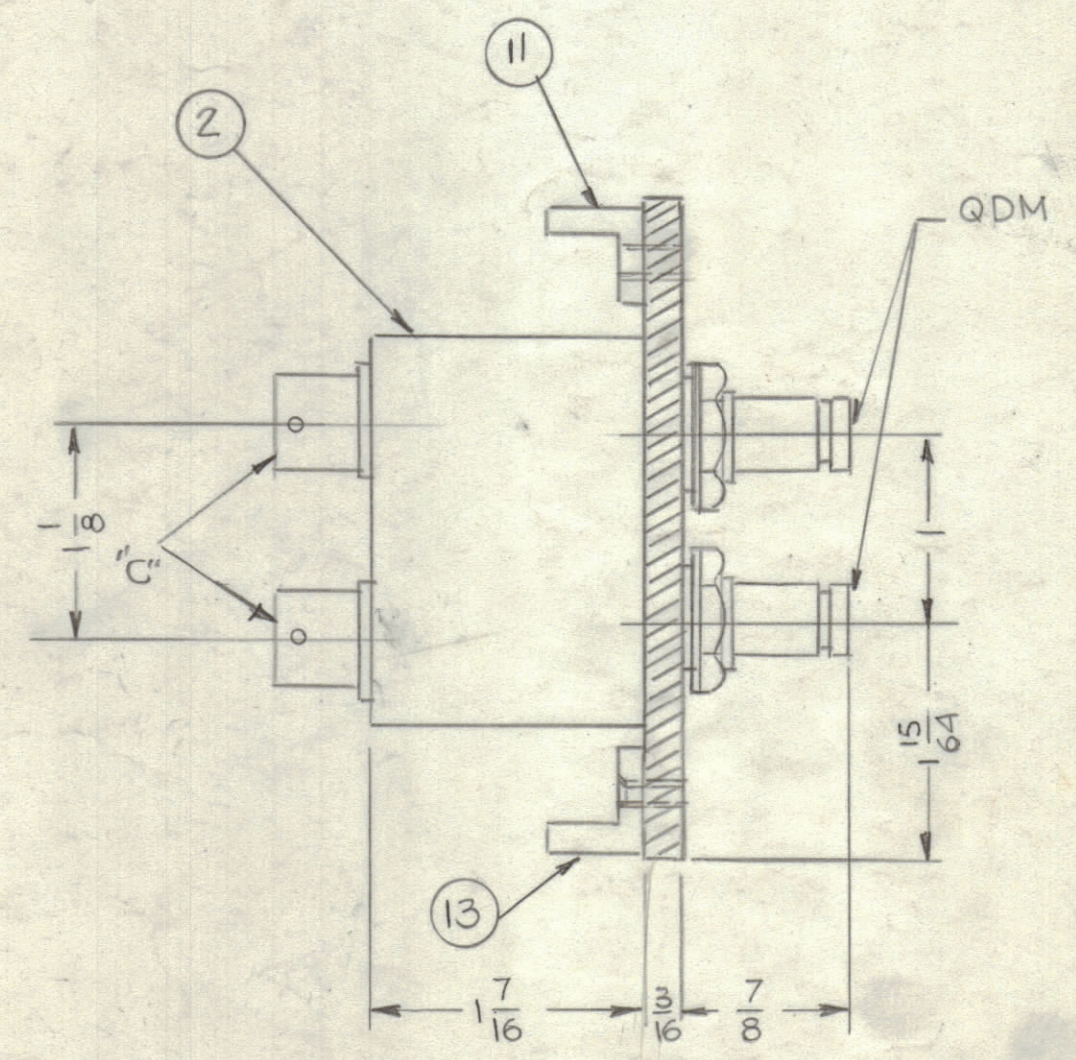


REVISIONS						
ZONE	LTR	DESCRIPTION	DATE	E.M.N.O	DRAFT	CHKD APPD
	Ø	ORIGINAL RELEASE FOR PRODUCTION	1980		GDL RU	JB
	A	ITEM 3 MS 29 22 ITEM 6 DEL ITEM 2 WAS PR 102-2 ITEM 5 PX 670-17	5-17-84	22063	GDL	JB
	B	ON CHART QTY ITEM 14 DOUBLE ON EACH COLUMN	3-21-85	22095	GDL	JB



REAR VIEW



SIDE VIEW A-A

SPPN-40516	16	0	32	64
SPPN-40515	15	2	60	60
SPPN-40514	14	4	56	56
SPPN-40513	13	6	52	52
SPPN-40512	12	8	48	48
SPPN-40511	11	10	44	44
SPPN-40510	10	12	40	40
SPPN-4059	9	14	36	36
SPPN-4058	8	16	32	32
SPPN-4057	7	18	28	28
SPPN-4056	6	20	24	24
SPPN-4055	5	22	20	20
SPPN-4054	4	24	16	16
SPPN-4053	3	26	12	12
SPPN-4052	2	28	8	8
SPPN-4051	1	30	4	4
MODEL	QTY. ITEM 2	QTY. ITEM 12	QTY. ITEM 14	

SEE CHART	REQ	ITEM	P/NO	DESCRIPTION
14			WA 144-11	WASHER, SHOLDER
13			LD2318-2/PM486	BRACE PANEL
12			HB-101-11-6	PLUG BUTTON
11			LD 2318-1/PM486	BRACE PANEL
X 10			S 691	TEST PROCEDURE
9			NP 251	NAME PLATE, IDENTIF.
8			SFBP0256 SN3	SCREW, THD CUTTING.
7			SCFP0632BNG	SCREW MACHINE
6				
5			PX 396-17	GUARD TAB
4			PR 101-17	TAP, PAPER
3				
2			SW 310	SWITCH, JACK ASSY
1			MS 2915-2	MACHINING, FRONT PANEL

- NOTES:
- SWITCHES (ITEM 2) ARE MOUNTED FROM LEFT TO RIGHT.
 - WHEN SWITCH MOUNTING HOLES ARE NOT UTILIZED, PLUG BUTTONS (ITEM 12) ARE MOUNTED ON FACE OF PANEL.
 - REFER TO CHART FOR APPLICATION OF PLUG BUTTONS (ITEM 12) WHEN REQUIRED.

QTY / UNIT	SEE CHART	MODEL USED ON	ASS'Y NO.
APPLICATION			
DO NOT SCALE	CODE		

NOTICE TO PERSONS RECEIVING THIS DRAWING
 THE TECHNICAL MATERIEL CORPORATION claims proprietary right in the material disclosed hereon. This drawing is issued in confidence for engineering information only and may not be reproduced or used to manufacture anything shown hereon without permission from THE TECHNICAL MATERIEL CORPORATION to the user. This drawing is loaned for mutual assistance and is subject to recall at any time.

UNLESS OTHERWISE SPECIFIED DIMENSIONS ARE IN INCHES AND INCLUDE CHEMICALLY APPLIED OR PLATED FINISHES	
TOLERANCES ON	
DECIMALS	FRACTIONS
.X ± .05	± 1/64
.XX ± .01	ANGLES
.XXX ± .005	± 0°-30'
MATERIAL ALUMINUM	
19 X 3 15/32 X 3/16	
FINISH 5115 TMC SMOOTH GREY ENAMEL	

QTY. REQ.	ITEM	PART NO.	DESCRIPTION	SYMBOL
LIST OF MATERIAL				
THE TECHNICAL MATERIEL CORP. MAMARONECK, NEW YORK				
PANEL, PATCH RF. SWITCHING				
MATERIAL		SIZE	CODE IDENT. NO.	DWG NO.
FINISH		C	82679	SPPN-40516
MATERIAL		SCALE		SHEET OF
FINISH				

FINAL APPROVAL	DATE
<i>GDB</i>	9/18/84
MECH. DES.	DATE
ELECT. DES.	DATE
CHECKED	DATE
DRAWN	DATE
G.D.L.	9-19-84