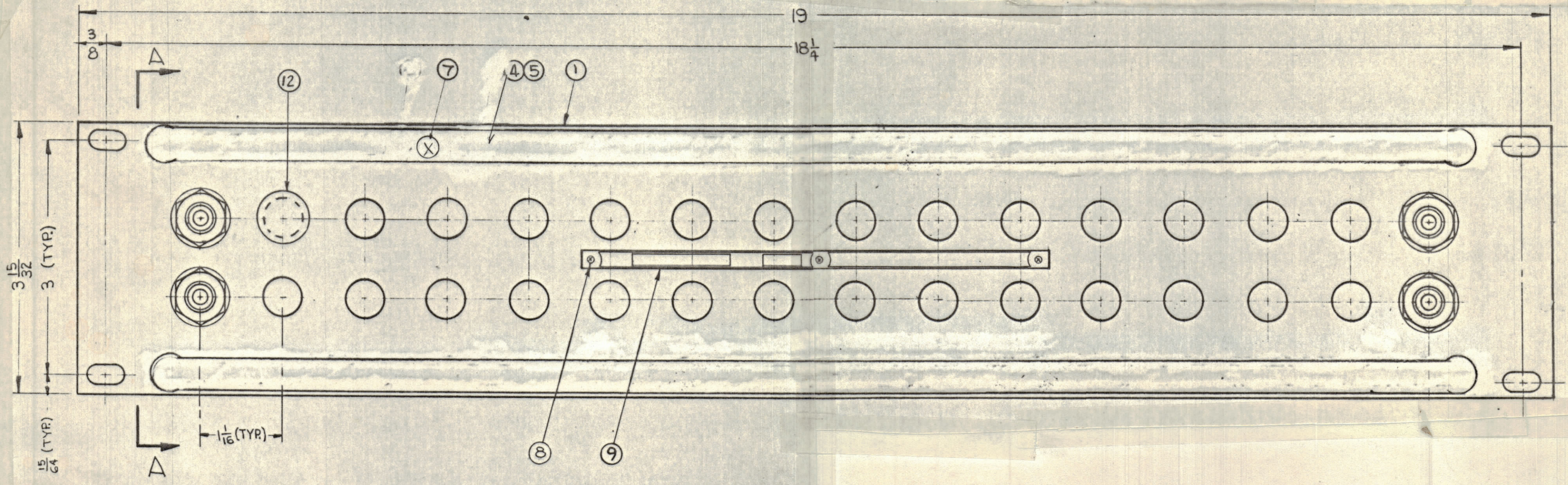
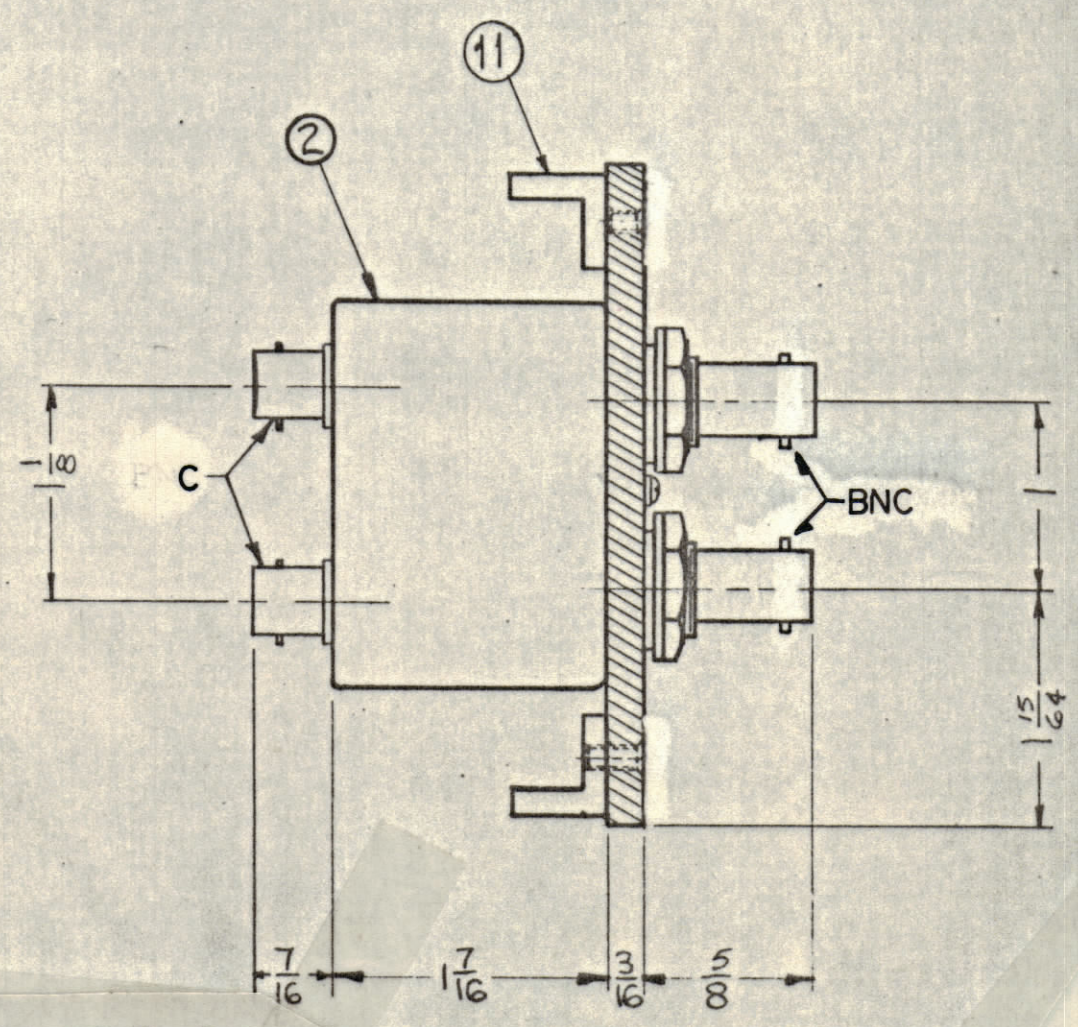


REVISIONS						
ZONE	LTR	DESCRIPTION	DATE	E.M.N.NO	DRAFT	CHKD APPD



MODEL	QUAN. ITEM 2	QUAN. ITEM 12
SPP-4251	1	30
SPP-4252	2	28
SPP-4253	3	26
SPP-4254	4	24
SPP-4255	5	22
SPP-4256	6	20
SPP-4257	7	18
SPP-4258	8	16
SPP-4259	9	14
SPP-42510	10	12
SPP-42511	11	10
SPP-42512	12	8
SPP-42513	13	6
SPP-42514	14	4
SPP-42515	15	2
SPP-42516	16	0



SIDE VIEW A-A

SEE CHART

QTY / UNIT	MODEL USED ON	ASS'Y NO.
APPLICATION		
CODE		

NOTICE TO PERSONS RECEIVING THIS DRAWING  
 THE TECHNICAL MATERIEL CORPORATION claims proprietary right in the material disclosed hereon. This drawing is issued in confidence for engineering information only and may not be reproduced or used to manufacture anything shown hereon without permission from THE TECHNICAL MATERIEL CORPORATION to the user. This drawing is loaned for mutual assistance and is subject to recall at any time.

SEE CHART	ITEM	PART NO.	DESCRIPTION	SYMBOL
12		HB-101-11-G	PLUG, BUTTON	
2		PM-486	BRACE, PANEL	
X				
1		NP-878	NAMEPLATE, IDENTIFICATION	
3		SFBP0256SN3	SCREW, THREAD CUTTING	
12		SCFP0632BN5	SCREW, MACHINE	
X				
2		PX-396-17	GUARD, TAB	
2		PR-101-17	TAP, PAPER	
X				
2		SW-587	SWITCH, JACK ASSEMBLY	
1		MS-2975	MACHINING, FRONT PANEL	

SEE CHART

LIST OF MATERIAL

UNLESS OTHERWISE SPECIFIED DIMENSIONS ARE IN INCHES AND INCLUDE CHEMICALLY APPLIED OR PLATED FINISHES

TOLERANCES ON  
 DECIMALS .X ± .05  
 .XX ± .01  
 .XXX ± .005  
 FRACTIONS ± 1/64  
 ANGLES ± 0° -30'

MATERIAL ALUMINUM  
 19 x 3 15/32 x 3 1/16  
 FINISH S115 TMC SMOOTH  
 GREY ENAMEL

FINAL APPROVAL *[Signature]* DATE 5/9/86  
 MECH. DES. *Efm* DATE 5/7/86  
 ELECT. DES. DATE  
 CHECKED *H.J.* DATE  
 DRAWN *RAW* DATE 5-9-86

THE TECHNICAL MATERIEL CORP.  
 MAMARONECK, NEW YORK

PANEL, PATCH, R.F.  
 SWITCHING

SIZE CODE IDENT.NO. DWG NO. ISSUE  
 C 82679 SPP 42516

SCALE DO NOT SCALE SHEET OF

- NOTES:
- SWITCHES (ITEM 2) ARE MOUNTED FROM LEFT TO RIGHT.
  - WHEN SWITCH MOUNTING HOLES ARE NOT UTILIZED, PLUG BUTTONS (ITEM 12) ARE MOUNTED ON FACE OF PANEL.
  - REFER TO CHART FOR APPLICATION OF PLUG BUTTONS (ITEM 12) WHEN REQUIRED.

SPP 42516

B

A