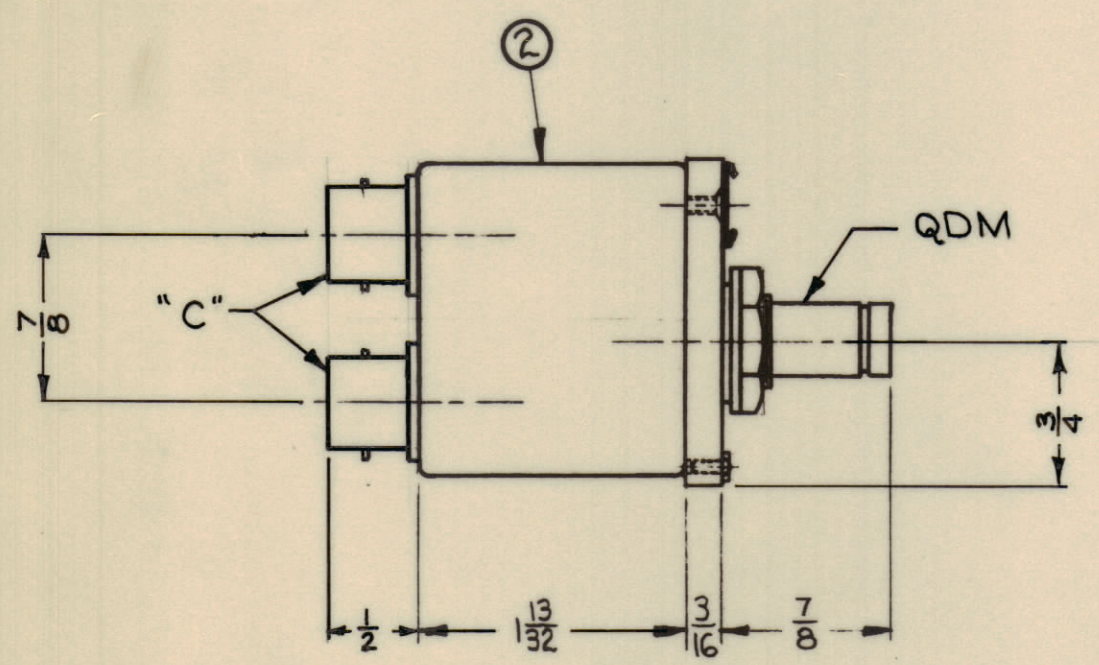
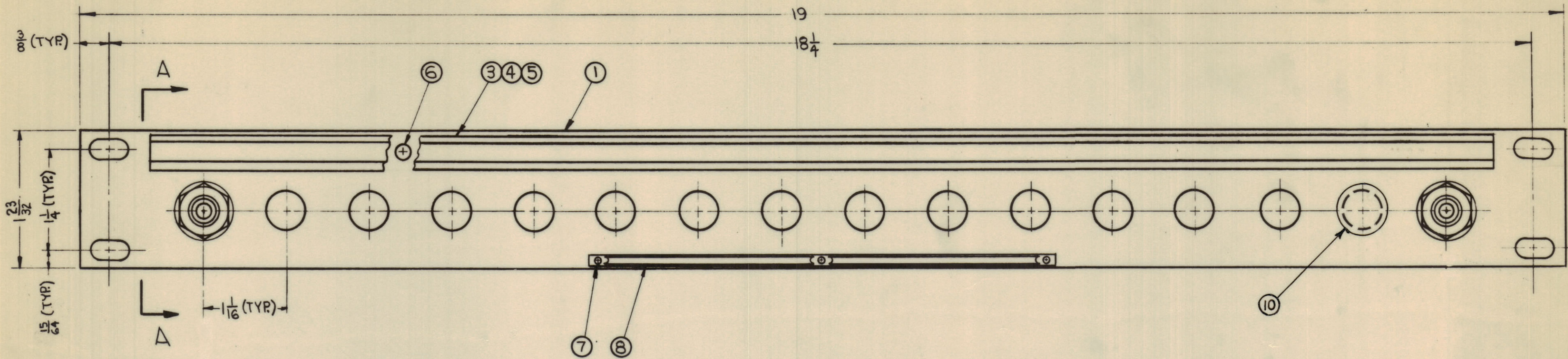


REVISIONS						
ZONE	SYM.	DESCRIPTION	DATE	E.M.N. NO.	DRAFT	CHKD
C7 AB4	A	ADDED ITEM 10, CHART, NOTES, DIMS. ON VIEW "A-A" $\frac{7}{8}$ & $\frac{3}{4}$	3-12-63	8499	RC	JLB
C2 B3		ITEMS (8) WAS SEE NAMEPLATE NOTE, (2) QTY WAS 16				
A7		DELETED NAMEPLATE NOTE				



SIDE VIEW A-A

NOTES:

1. SWITCHES (ITEM 2) ARE MOUNTED FROM LEFT TO RIGHT.
2. WHEN SWITCH MOUNTING HOLES ARE NOT UTILIZED, PLUG BUTTONS (ITEM 10) ARE MOUNTED ON FACE OF PANEL.
3. REFER TO CHART FOR APPLICATION OF PLUG BUTTONS (ITEM 10) WHEN REQUIRED.

MODEL	QUANTITY ITEM 2	QUANTITY ITEM 10
SPP-30516	16	0
SPP-30515	15	1
SPP-30514	14	2
SPP-30513	13	3
SPP-30512	12	4
SPP-30511	11	5
SPP-30510	10	6
SPP-3059	9	7
SPP-3058	8	8
SPP-3057	7	9
SPP-3056	6	10
SPP-3055	5	11
SPP-3054	4	12
SPP-3053	3	13
SPP-3052	2	14
SPP-3051	1	15

SEE CHART	ITEM	PART NUMBER	DESCRIPTION	SYMBOL
	10	HB-101-11-G	PLUG, BUTTON	
X	9	S-692	TEST PROCEDURE	
	8	NP-251	NAMEPLATE IDENTIFICATION	
	7	SFBP0256SN3	SCREW, THREAD CUTTING	
	6	SCFP0348BN3	SCREW, MACHINE	
	5	PX-396-17	GUARD, TAB	
	4	PR-101-17	TAP, PAPER	
	3	MS-1184	HOLDER, CARD	
SEE CHART	2	SW-306	SWITCH, JACK ASSEMBLY	
	1	MS-2973	MACHINING, FRONT PANEL	

LIST OF MATERIAL

MATERIAL	ALUMINUM 19x3 $\frac{15}{32}$ x $\frac{3}{16}$	THE TECHNICAL MATERIEL CORP. MAMARONECK, NEW YORK		
FINISH	5115 TMC SMOOTH GREY ENAMEL	TITLE PANEL, PATCH R.F. SWITCHING		
UNLESS OTHERWISE SPECIFIED DIMENSIONS ARE IN INCHES AND INCLUDE CHEMICALLY APPLIED OR PLATED FINISHES		DRAWN	DATE	FINAL APPROVAL
DECIMALS .X ± .05 .XX ± .01 .XXX ± .005		A. Turchin	6-5-62	JLB
FRACTIONS ± 1/64 ANGLES ± 0° 30'		CHECKED	DATE	
TOLERANCES		Hda	6-26-62	
		ELECT. DES.	DATE	
		MECH. DES.	DATE	
			6/27/62	
SHEET				REV. LTR.

QTY/UNIT	SEE CHART	ASS'Y. NO.
SCALE	MODEL USED ON	
DO NOT SCALE	CODE	
THE CONTENTS OF THIS DRAWING ARE THE EXCLUSIVE PROPERTY OF THE TECHNICAL MATERIEL CORP. ITS UNAUTHORIZED USE OR REPRODUCTION IN WHOLE OR IN PART IS STRICTLY FORBIDDEN.		

NOTES

SPP30516 A