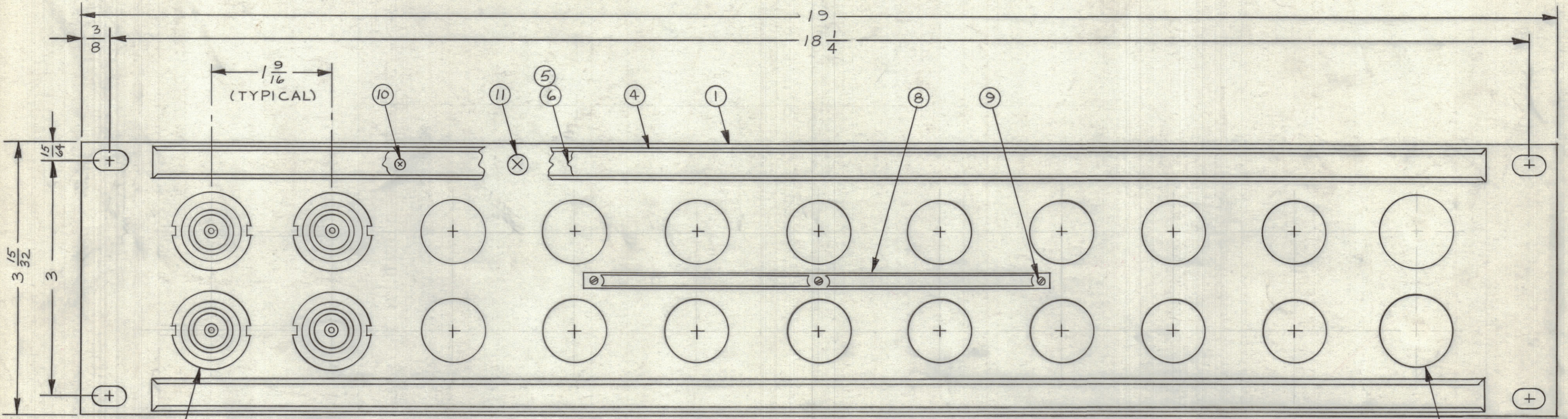


REVISIONS						
ZONE	SYM	DESCRIPTION	DATE	E.M.N. NO.	DRAFT	CHKD APPD



NOTE 1

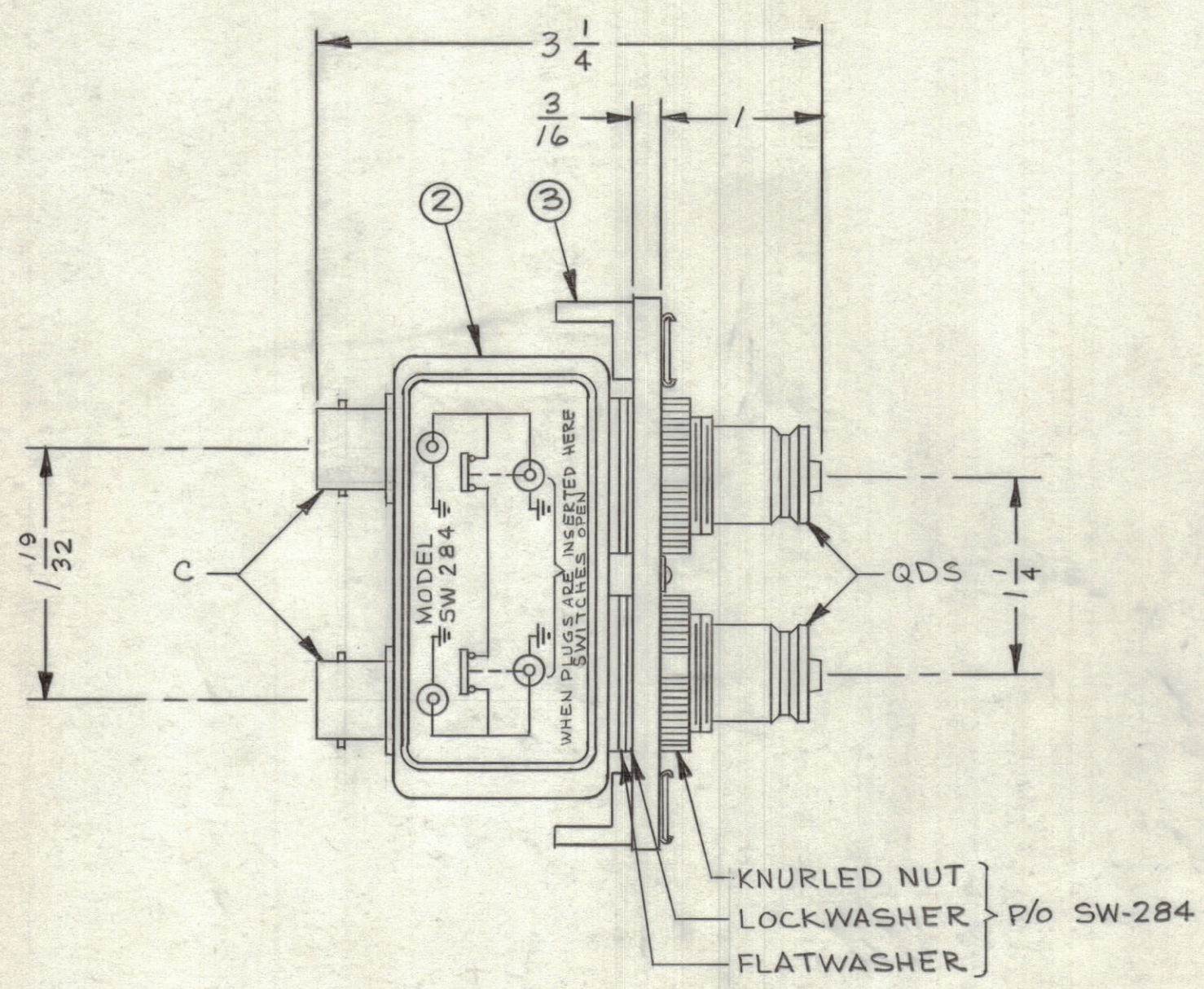
NOTE 2 AND 3

MODEL DESIGNATION

SPP-15 B 11

BASIC MODEL PANEL HEIGHT NO. OF JACK SWITCHES

SPP-15B11	11	0
SPP-15B10	10	2
SPP-15B9	9	4
SPP-15B8	8	6
SPP-15B7	7	8
SPP-15B6	6	10
SPP-15B5	5	12
SPP-15B4	4	14
SPP-15B3	3	16
SPP-15B2	2	18
SPP-15B1	1	20
MODEL	QUAN. ITEM 2	QUAN. ITEM 7



REQ'D.	ITEM	PART NUMBER	DESCRIPTION	SYMBOL
1	14	TG-100	TAG, WARNING	
X	13	S-685	TEST PROCEDURE	
1	12	TP-109	WRENCH, SOCKET (LOOSE ITEM)	
12	11	SCFP0632BN5	SCREW, MACHINE	
12	10	SCFP0348BN3	SCREW, MACHINE	
3	9	SFB0256SN3	SCREW, THREAD CUTTING	
1	8	NP-251	NAMEPLATE, IDENTIFICATION	
SEE CHART	7	HB-101-5-G	BUTTON, PLUG	
2	6	PX-396-17	GUARD, TAB	
2	5	PR-101-17	TAB, PAPER	
2	4	MS-1184	HOLDER, TAB	
2	3	PM-490	BRACE, PANEL	
SEE CHART	2	SW-284	SWITCH, RF	
1	1	MS-1182	PANEL FRONT, MACHINING	

MATERIAL		THE TECHNICAL MATERIEL CORP.	
ALUMINUM		MAMARONECK, NEW YORK	
FINISH TMC SMOOTH GRAY SEMI-GLOSS ENAMEL		TITLE PATCH PANEL, RF SWITCHING DUAL QDS TO DUAL C	
DRAWN M. TANTILLO	DATE 1-28-63	FINAL APPROVAL	DATE
CHECKED	DATE		
ELECT. DES.	DATE	SPP-15	
MECH. DES.	DATE	SHEET	REV. LTR.

- NOTES:
1. SWITCHES (ITEM 2) ARE MOUNTED FROM LEFT TO RIGHT.
  2. WHEN SWITCH MOUNTING HOLES ARE NOT UTILIZED, PLUG BUTTONS (ITEM 7) ARE MOUNTED ON FACE OF FRONT PANEL.
  3. REFER TO CHART FOR APPLICATION OF PLUG BUTTON (ITEM 7) WHEN REQUIRED.

SEE CHART		
QTY./UNIT	MODEL USED ON	ASS'Y. NO.
SCALE	CODE	

THE CONTENTS OF THIS DRAWING ARE THE EXCLUSIVE PROPERTY OF THE TECHNICAL MATERIEL CORP. ITS UNAUTHORIZED USE OR REPRODUCTION IN WHOLE OR IN PART IS STRICTLY FORBIDDEN.

NOTES

SPP-15