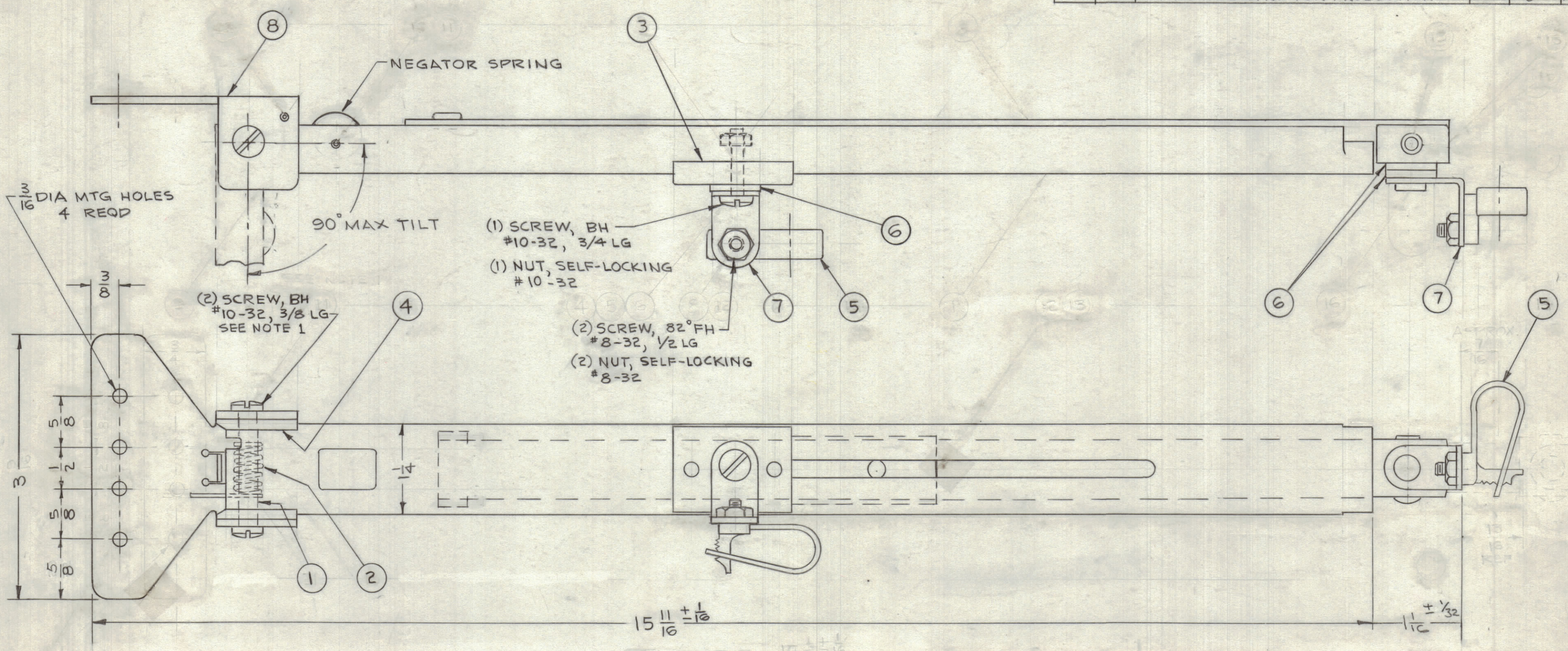


REVISIONS						
ZONE	SYM	DESCRIPTION	DATE	E.M.N. NO.	DRAFT	CHKD APPD
#	XI	3" DIM. WAS 3 9/16, 5/8 WAS 29/32 ITEM 5 PICTORIAL ADDED, TMC P/NO'S. ADDED.	6/5/64	XI	A.M.	
#	0	ORIGINAL RELEASE FOR PRODUCTION	6-8-64	0	A.M.	



- SPECIFICATIONS**
1. RETRACTOR TILTS 90° MAX.
  2. RETRACTOR EXTENSION MAX.
  3. NEGATOR SPRING TENSION.
  4. CLAMP BRACKET (ITEM 7) ROTATES 360°

1. APPLY LOCTITE CEMENT (GRADE AA) TO MOUNTING BRACKET SCREWS (ITEM #20)

**NOTES**

REQ'D.	ITEM	TMC PART NUMBER	MFRS PART NO.	DESCRIPTION	MATERIAL	SYMBOL
1	8	SP146-8	B-028332	BRACKET, MOUNTING	STAINLESS STEEL	
2	7	SP146-7	A-028329	BRACKET, CLAMP, CABLE	ALUMINUM	
3	6	SP146-6	A-028338	WASHER, NYLON	NYLON	
2	5	SP146-5	A-028337	CLAMP, CABLE	NYLON	
2	4	SP146-4	A-028334	BEARING, NYLON	NYLON	
1	3	SP146-3	A-028335	GLIDE, NYLON	NYLON	
1	2	SP146-2	A-028333	SPRING, TORSION	STEEL	
1	1	SP146-1	A-028892	POST, PIVOT	STEEL	

Q'TY/UNIT		MODEL USED ON	ASS'Y. NO.	I. JOHNSON		
SCALE		CODE		LIST OF MATERIAL		
NONE		C	S-401-209 090400	SEE LIST OF MATERIAL		
THE CONTENTS OF THIS DRAWING ARE THE EXCLUSIVE PROPERTY OF THE TECHNICAL MATERIEL CORP. ITS UNAUTHORIZED USE OR REPRODUCTION IN WHOLE OR IN PART IS STRICTLY FORBIDDEN.			UNLESS OTHERWISE SPECIFIED DIMENSIONS ARE IN INCHES AND INCLUDE CHEMICALLY APPLIED OR PLATED FINISHES		THE TECHNICAL MATERIEL CORP. MAMARONECK, NEW YORK	
TOLERANCES			DECIMALS		TITLE	
± 1/64 ANGLES ± 0° 30'			.XX ± .05		RETRACTOR, CABLE, SPRING	
			.XXX ± .005		DRAWN: [Signature] DATE: 11-13-63	
					CHECKED: [Signature] DATE: 1-21-64	
					ELECT. DES: [Signature] DATE: 1/21/64	
					MECH. DES: [Signature] DATE: 1/21/64	
					FINAL APPROVAL: [Signature] DATE: [Blank]	
					SHEET: SP 146	
					REV. LTR. [Blank]	

SP 146