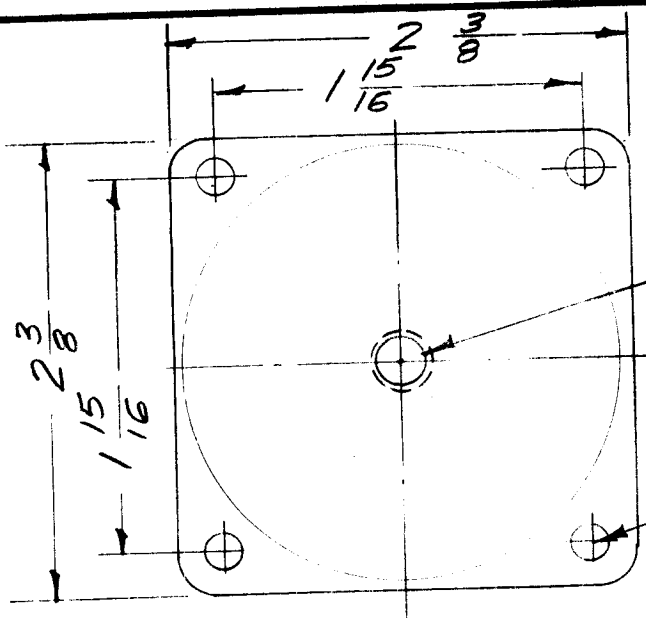
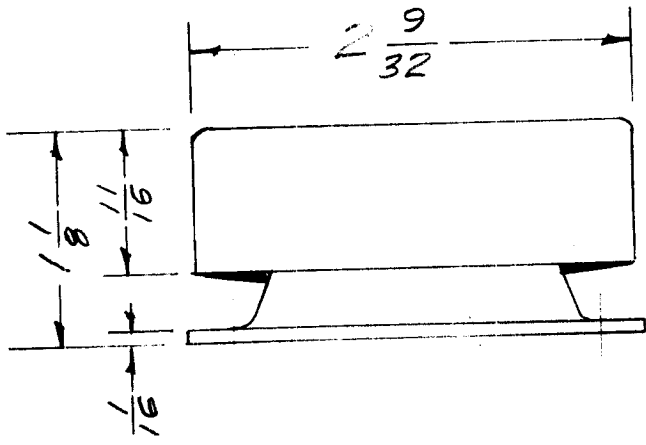


| | | | | |
|---------------|-------------|------------|---------|--------|
| REQ. PER UNIT | USED ON | | | SH-101 |
| | MODEL | ASS'Y. NO. | DATE | |
| 6 | M5R-GPR90KY | CAB. | 9-16-57 | |



1/4 - 20 Tap

.196 D. 4 Req.



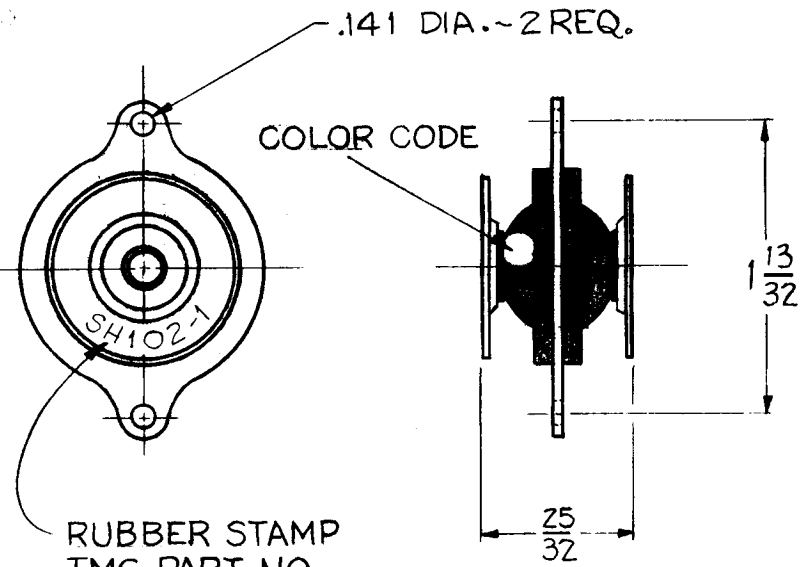
Weight - 6 ounces.

Ref. BARRY CONTROLS Inc. No. C1050-T4

| | | | | | | | | REQ. ITEM | PART NO. | DESCRIPTION | SYMBOL | | | | |
|----------------|------|--------------|--|---------|--------|---------|-----------|--------------------|-------------------|--|--------------------|----------------|--|--|--|
| | | | | | | | | | | THE TECHNICAL MATERIEL CORP. MAMARONECK, NEW YORK | | | | | |
| | | | | | | | | | STOCK SIZE | SHOCK ABSORBER. | | | | | |
| | | | | | | | | | MATERIAL | 100 lbs. | | | | | |
| ISSUE | ITEM | CHANGED FROM | DATE | CH. NO. | DRAFTS | CHECKER | ENG. APP. | | 16 9/16/57 | <i>[Signature]</i> | <i>[Signature]</i> | | | | |
| TOLERANCES | | | SCALE: | | | | | TYPE & TEMPER | HEAT TREAT. SPEC. | DRAWN | CHECKED | FINAL APPROVAL | | | |
| DEC. DIM. ± | | | MAXIMUM ALLOWABLE TOLERANCES HAVE BEEN DETERMINED AND ANY DEVIATIONS WILL BE CAUSE FOR REJECTION. REMOVE ALL BURRS AND SHARP EDGES | | | | | | | | | SH-101 | | | |
| FRAC. DIM. ± | | | | | | | | | | | | | | | |
| ANGULAR DIM. ± | | | | | | | | | | | | | | | |
| | | | | | | | | FINISH & SPEC. NO. | ELEC. DES. APP. | MECH. DES. APP. | | | | | |

| TMC PART NO. | BARRY PART NO. | LOAD(lbs)FOR NAT. FREQ OF 25-30CPS | MAXIMUM ALLOWABLE LOAD(lbs) | COLOR CODE |
|--------------|----------------|------------------------------------|-----------------------------|------------|
| SH-102-1 | 6550-4 | 2 | 4 | RED |
| | | | | |
| | | | | |
| | | | | |
| | | | | |
| | | | | |
| | | | | |
| | | | | |
| | | | | |
| | | | | |

| | | | | |
|----------------|---------|------------|---------|--------|
| REQ. PER. UNIT | USED ON | | | SH-102 |
| | MODEL | ASS'Y. NO. | DATE | |
| | | | 4-13-59 | |



NOTICE TO PERSONS RECEIVING THIS DRAWING

THE TECHNICAL MATERIEL CORPORATION claims proprietary right in the material disclosed herein. This drawing is issued in confidence for engineering information only and may not be reproduced or used to manufacture anything shown hereon without permission from THE TECHNICAL MATERIEL CORPORATION to the user. This drawing is loaned for mutual assistance and is subject to recall at any time.

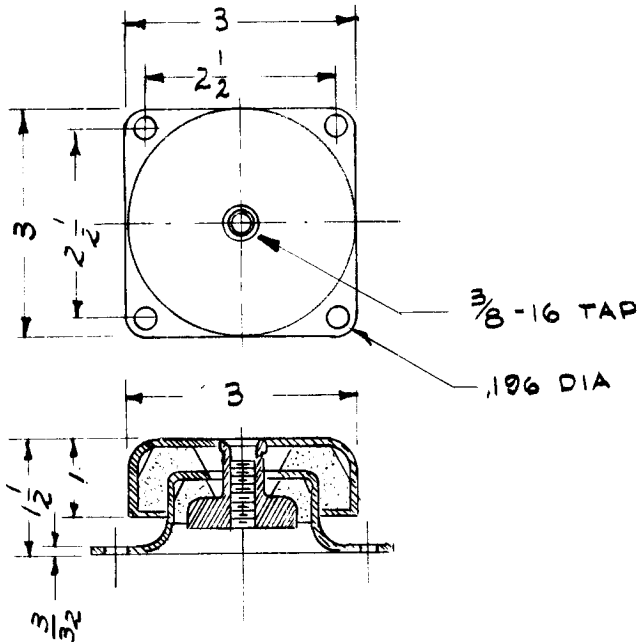
Property of:
THE TECHNICAL MATERIEL CORPORATION
 MAMARONECK, NEW YORK

REF~THE BARRY CORP

| | | | | REQ. | ITEM | PART NO. | DESCRIPTION | | SYMBOL | |
|---|------|--------------|---|--------------------|--------|-----------------|--|------------|-------------------|-------------------|
| | | | | | | | THE TECHNICAL MATERIEL CORP. MAMARONECK, NEW YORK | | | |
| | | | | STOCK SIZE | | | SHOCK ABSORBER | | | |
| | | | | MATERIAL | | | | | | |
| ISSUE | ITEM | CHANGED FROM | DATE | CH. NO. | DRAFTS | CHECKER | ENG. APP. | J.C. BIELE | <i>J.C. Biele</i> | <i>J.C. Biele</i> |
| TOLERANCES | | | SCALE: | | | TYPE & TEMPER | | DRAWN | CHECKED | FINAL APPROVAL |
| DEC. DIM. ± FRAC. DIM. ± ANGULAR DIM. ± | | | MAXIMUM ALLOWABLE TOLERANCES HAVE BEEN DETERMINED AND ANY DEVIATIONS WILL BE CAUSE FOR REJECTION. REMOVE ALL BURRS AND SHARP EDGES | | | HEATTREAT.SPEC. | | | <i>KG</i> | SH-102 |
| | | | | FINISH & SPEC. NO. | | | ELEC. DES. APP | | MECH. DES. APP | |

| TMC Part No. | Cat. No. | Maximum Load Rating | Weight |
|--------------|----------|---------------------|--------|
| SH-104-1 | C2020 | 50 lbs. | 1 lb. |
| SH-104-2 | C2040 | 100 lbs. | 1 lb. |
| SH-104-3 | C2060 | 150 lbs. | 1 lb. |
| SH-104-4 | C2090 | 250 lbs. | 1 lb. |

| REQ. PER. UNIT | USED ON | | | SH-104 |
|----------------|---------|------------|------|--------|
| | MODEL | ASS'Y. N . | DATE | |
| 6 | RAK-8 | | | |



Nomenclature will be in the following form:

SH - 104 - 1 - T6

TMC Part Number

Center core w/clearance hol for standard 3/8" dia. through hole is designated by suffix - 6. Center core w/threaded hole for use w/standard 3/8" x 16" bolt is designated by suffix - T6 as shown.

| ISSUE | ITEM | CHANGED FROM | DATE | CH. NO. | DRAFTS | CHECKER | ENG. APP. | REQ. ITEM | PART NO. | DESCRIPTION | SYMB L |
|--|------|--------------|------|---------|--------|---------|-----------|--|----------|-------------|--------|
| | | | | | | | | THE TECHNICAL MATERIEL CORP. MAMARONECK, NEW YORK | | | |
| | | | | | | | | SHOCK ISOLATOR | | | |
| TOLERANCES | | | | | | | | MATERIAL | | | |
| SCALE: | | | | | | | | DRAWN | | | |
| DEC. DIM. ± | | | | | | | | CHECKED | | | |
| FRAC. DIM. ± | | | | | | | | FINAL APPROVAL | | | |
| ANGULAR DIM. ± | | | | | | | | SH-104 | | | |
| MAXIMUM ALLOWABLE TOLERANCES HAVE BEEN DETERMINED AND ANY DEVIATIONS WILL BE CAUSE FOR REJECTION. REMOVE ALL BURRS AND SHARP EDGES | | | | | | | | FINISH & SPEC. NO. | | | |
| | | | | | | | | ELEC. DES. APP MECH. DES. APP | | | |

| TMC PART NO. | MFG. TYPE NO. | A TOTAL COMPRESSED HEIGHT | B THK'NESS SUPPORTING MEMBER | LOAD RATING LBS. ANY DIRECTION | C HOLE DIA. | FOR SCREW NO. |
|--------------|---------------|---------------------------|------------------------------|--------------------------------|-------------|---------------|
| SH105-1 | 2 | 31/64" | .110 MAX. .072 MIN. | 1.2 LBS. | .169 | 8 |
| SH105-2 | 3 | 31/64" | .110 MAX. .072 MIN. | 1.2 LBS. | .193 | 10 |

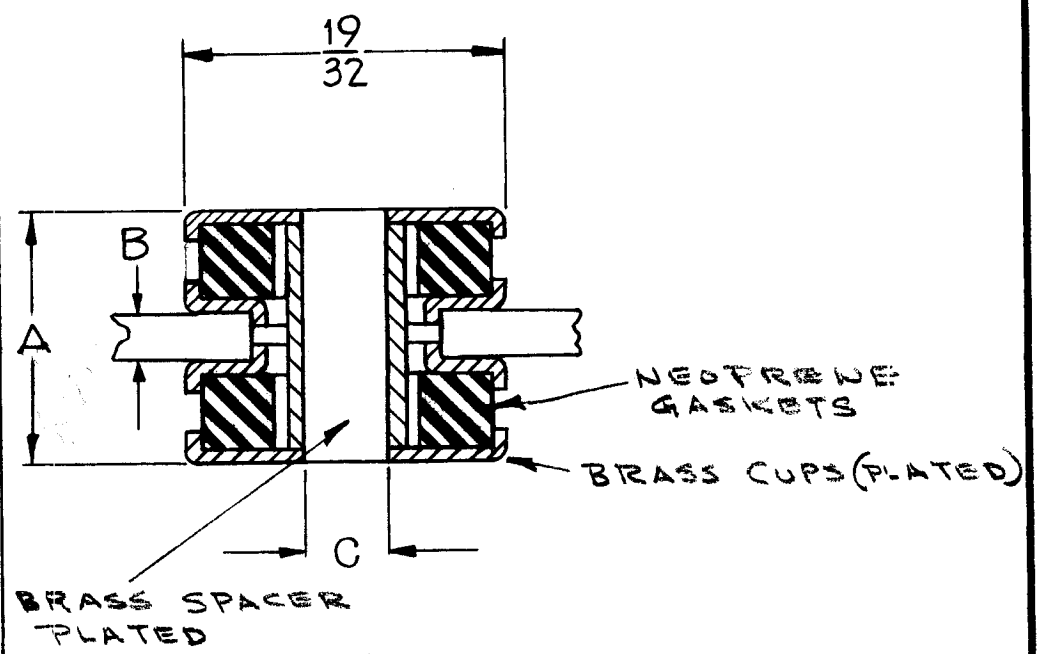
| REQ. PER. UNIT | USED ON | | |
|----------------|---------|------------|------|
| | MODEL | ASS'Y. NO. | DATE |
| | | | |

SH-105 A

NOTICE TO PERSONS RECEIVING THIS DRAWING

THE TECHNICAL MATERIEL CORPORATION claims proprietary right in the material disclosed hereon. This drawing is issued in confidence for engineering information only and may not be reproduced or used to manufacture anything shown hereon without permission from THE TECHNICAL MATERIEL CORPORATION to the user. This drawing is loaned for mutual assistance and is subject to recall at any time.

Property of:
THE TECHNICAL MATERIEL CORPORATION
 MAMARONECK, NEW YORK



| ISSUE | ITEM | CHANGED FROM | DATE | CH. NO. | DRAFTS | CHECKER | ENG. APP. |
|----------------|------|-----------------------|--|---------|--------------------|--------------------|-----------|
| A | | STAMPING NOTE DELETED | 11-20-59 | 1577 | <i>[Signature]</i> | <i>[Signature]</i> | |
| TOLERANCES | | | SCALE: S401-19 (MODEL B) | | | | |
| DEC. DIM. ± | | | MAXIMUM ALLOWABLE TOLERANCES HAVE BEEN DETERMINED AND ANY DEVIATIONS WILL BE CAUSE FOR REJECTION. REMOVE ALL BURRS AND SHARP EDGES | | | | |
| FRAC. DIM. ± | | | | | | | |
| ANGULAR DIM. ± | | | | | | | |

| REQ. | ITEM | PART NO. | DESCRIPTION | | SYMBOL |
|------|------|----------|--|-------------------|----------------|
| | | | THE TECHNICAL MATERIEL CORP. MAMARONECK, NEW YORK | | |
| | | | ISOLATOR, VIBRATION | | |
| | | | MATERIAL | J.C. Biele | |
| | | | TYPE & TEMPER | HEAT TREAT. SPEC. | DRAWN |
| | | | | | CHECKED |
| | | | | | FINAL APPROVAL |
| | | | FINISH & SPEC. NO. | ELEC. DES. APP | MECH. DES. APP |
| | | | | | SH-105 A |

THE CONTENTS OF THIS DRAWING ARE THE EXCLUSIVE PROPERTY OF THE TECHNICAL MATERIEL CORP. ITS UNAUTHORIZED USE FOR REPRODUCTION IN WHOLE OR IN PART IS STRICTLY FORBIDDEN.

REQ. PER UNIT

6

USED ON

MODEL

GPT 200K

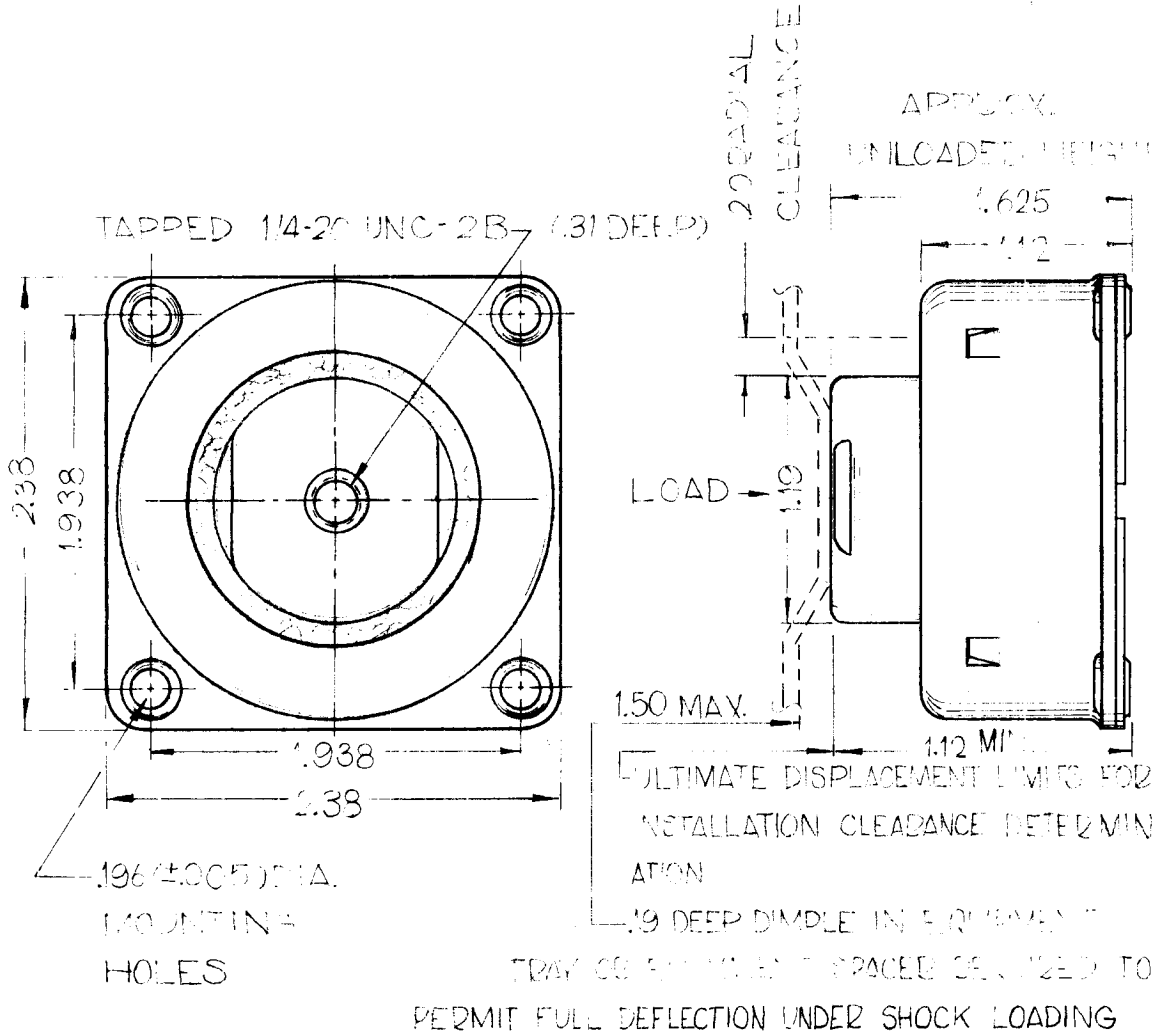
ASS'Y. NO.

AX-393

DATE

4-23-64

SH-115



| TMC NO. | MFG NO. | LOAD DATA |
|----------|----------|----------------|
| SH 115-1 | 1202-1 | 2 1/2 TO 3 |
| SH 115-2 | 1202-2 | 5 1/2 TO 6 1/2 |
| SH 115-3 | 1202-3 | 7 TO 8 |
| SH 115-4 | 1202-4 * | 9 TO 10 |

* ADD SUFFICIENT TO MODEL NO. (E.G. 1202-1A) FOR MOUNT WITH 3/16" DIA. B TOP CAP AND ATTACHMENT TO EQUIPMENT TRAY WITH 1/8" DIMPLES. WRENCH FLATS PROVIDED ON HIGH STUD ONLY. HOLE END DRILLING PROVIDED ON LOW STUD.

FINISH:

ALUMINUM PARTS ARE SATIN FINISHED (ALKALINE STORDED); BRITITE OR ANODIZED ON SPECIAL ORDER. STAINLESS STEEL PARTS ARE PASSELATED, AND BRASS ELEMENTS ARE NICKLE PLATED

| REQ. ITEM | PART NO. | DESCRIPTION | SYMBOL |
|-----------|----------|--|--------|
| | | THE TECHNICAL MATERIEL CORP. MAMARONECK, NEW YORK | |
| | | STOCK SIZE | |
| | | MATERIAL | |
| | | TYPE & TEMPER | |
| | | HEAT TREAT. SPEC. | |
| | | FINISH & SPEC. NO. | |
| | | ELEC. DES. APP. | |
| | | MECH. DES. APP. | |

| | | | | | | |
|---|-------------|---|-----------|-----------|---------|-----------|
| ○ ORIGINAL RELEASE FOR PRODUCTION | 5-13-64 | ○ A.M. | | | | |
| SYM | DESCRIPTION | DATE | CH. NO. | DRAFTS | CHECKER | ENG. APP. |
| UNLESS OTHERWISE SPECIFIED DIMENSIONS ARE IN INCHES AND INCLUDE CHEMICALLY APPLIED OR PLATED FINISHES | | SCALE | | | | |
| DECIMALS .X ± .05 .XX ± .01 .XXX ± .005 | TOLERANCES | FRACTIONS ± 1/64 ANGLES ± 0° 30' | CODE C | S 401-152 | | |

| | | |
|------------|---------|--------|
| J.E. VITRO | aa | RRC |
| DJB | Mc 4/24 | SH 115 |
| | | ○ |