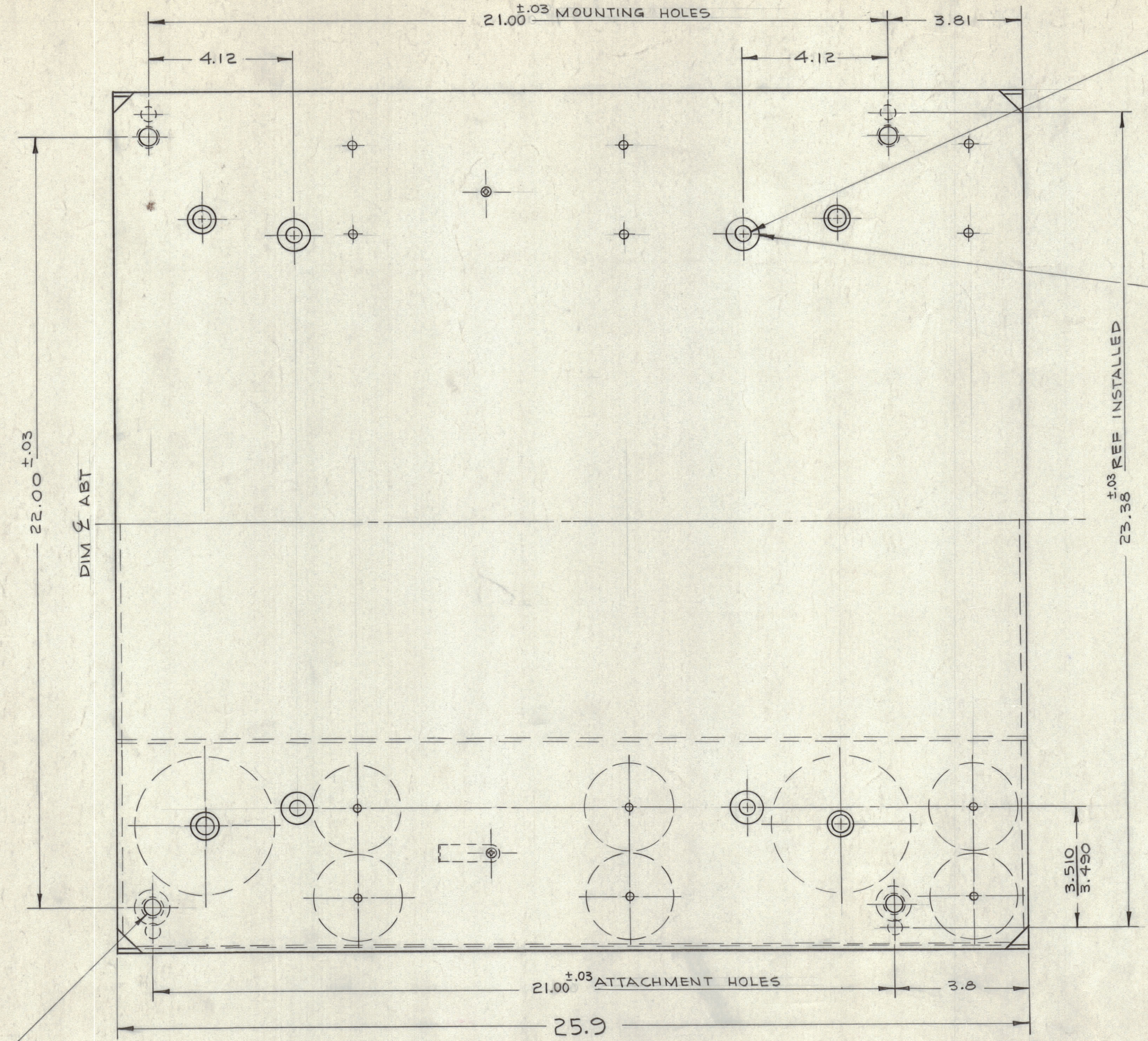


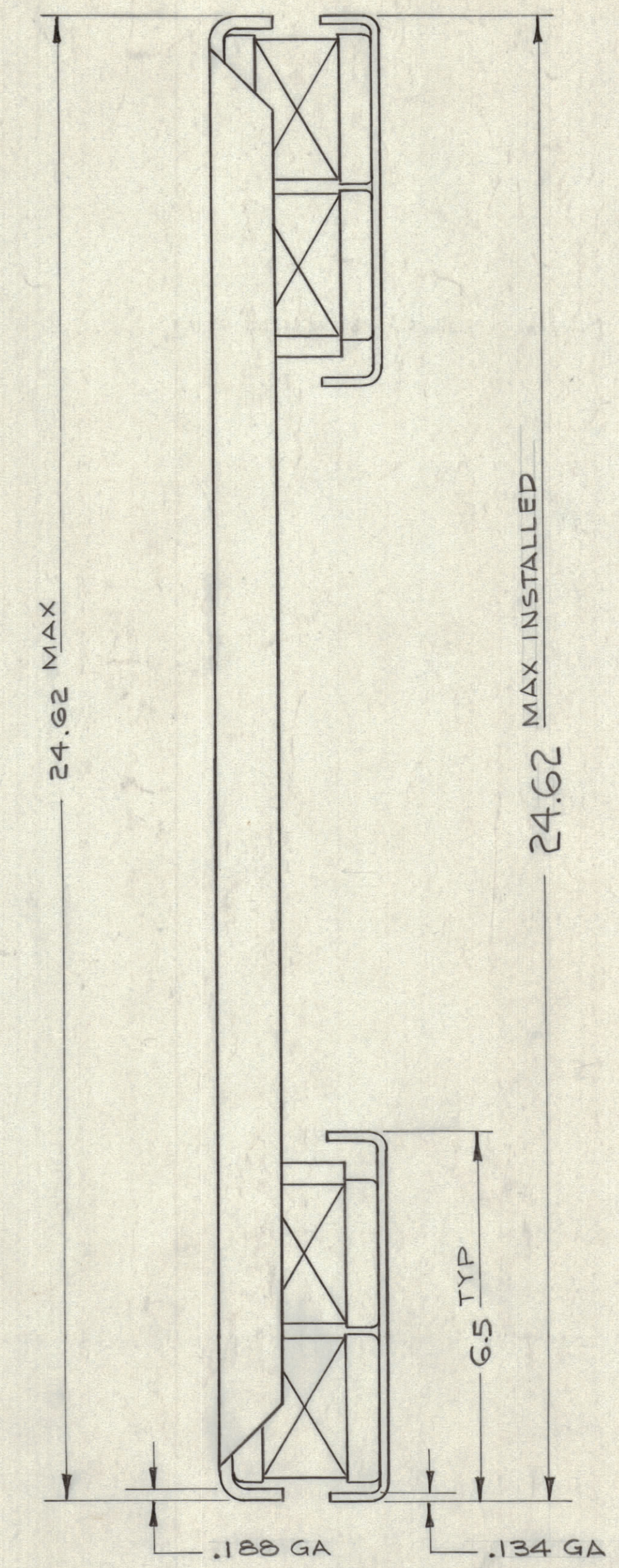
REVISIONS					
ZONE	SYM	DESCRIPTION	DATE	E.M.N. NO.	APPD



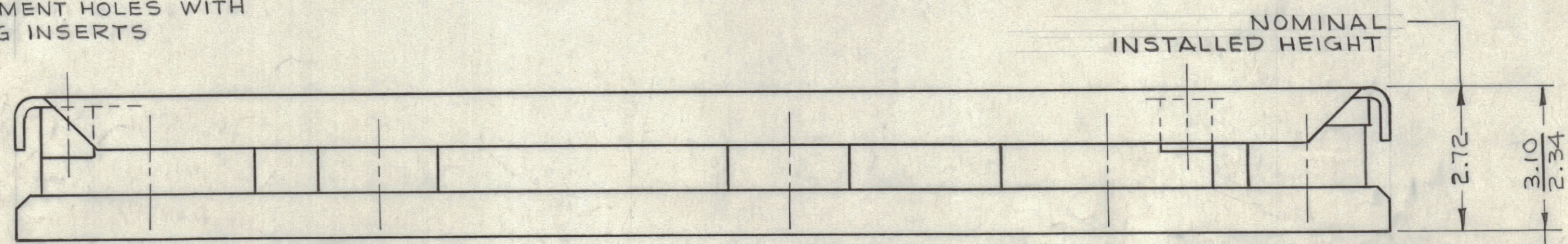
(8)  $\frac{.406}{.397}$  DIA MOUNTING HOLES

(4) .88 DIA ACCESS HOLES

$\pm 0.03$  REF INSTALLED



(4) 5/8-11 UNC-2B x 1.00 DEEP, ATTACHMENT HOLES WITH LOCKING INSERTS



NOMINAL INSTALLED HEIGHT

ULTIMATE DISPLACEMENT

NOTES:

- CONSTRUCTION IS FUSION WELDED & SPOTWELDED UNLESS OTHERWISE SHOWN.
- .50 DIA ULTIMATE DISPLACEMENT OF CENTER OF TRAY WITH RESPECT TO CENTER OF BASE BEAMS FOR INSTALLATION CLEARANCE DETERMINATION.
- MODEL IS COMPOSED OF ONE AN AND ONE X PENTAGONAL.
- PRIMARY STRUCTURAL PARTS ARE STEEL, FINISH: APPLY PRIMER AND ONE COAT OF TEXTURED BLUE-GREY VINYL PER TMC SPEC S-520. SECONDARY PARTS ARE STEEL, BRASS & PHOSPHOR BRONZE, FINISH: CADMIUM PLATE, STAINLESS STEEL: PASSIVATE.

NOTICE TO PERSONS RECEIVING THIS DRAWING

THE TECHNICAL MATERIEL CORPORATION claims proprietary right in the material disclosed hereon. This drawing is issued in confidence for engineering information only and may not be reproduced or used to manufacture anything shown hereon without permission from THE TECHNICAL MATERIEL CORPORATION to the user. This drawing is loaned for mutual assistance and is subject to recall at any time.

Property of:  
THE TECHNICAL MATERIEL CORPORATION  
MAMARONECK, NEW YORK

REQ'D	ITEM	PART NUMBER	DESCRIPTION	SYMBOL

LIST OF MATERIAL	
MATERIAL	SEE NOTE 4
FINISH	SEE NOTE 4
THE TECHNICAL MATERIEL CORP. MAMARONECK, NEW YORK	
TITLE SHOCK MOUNT BASE	

QTY/UNIT	MODEL USED ON	ASSY. NO.
2	DDR-5	

SCALE	CODE	DATE	FINAL APPROVAL	DATE
NO SCALE	5401-152 (W1345-15A)	10-18-62		

DECIMALS	FRACTIONS	ELECT. DES.	DATE
X ± .05	± 1/64		
XX ± .01	ANGLES ± 0° 30'		
XXX ± .005			

MECH. DES.	DATE	SHEET	REV. LTR.

NOTES

THE CONTENTS OF THIS DRAWING ARE THE EXCLUSIVE PROPERTY OF THE TECHNICAL MATERIEL CORP. ITS UNAUTHORIZED USE OR REPRODUCTION IN WHOLE OR IN PART IS STRICTLY FORBIDDEN.

SH-114