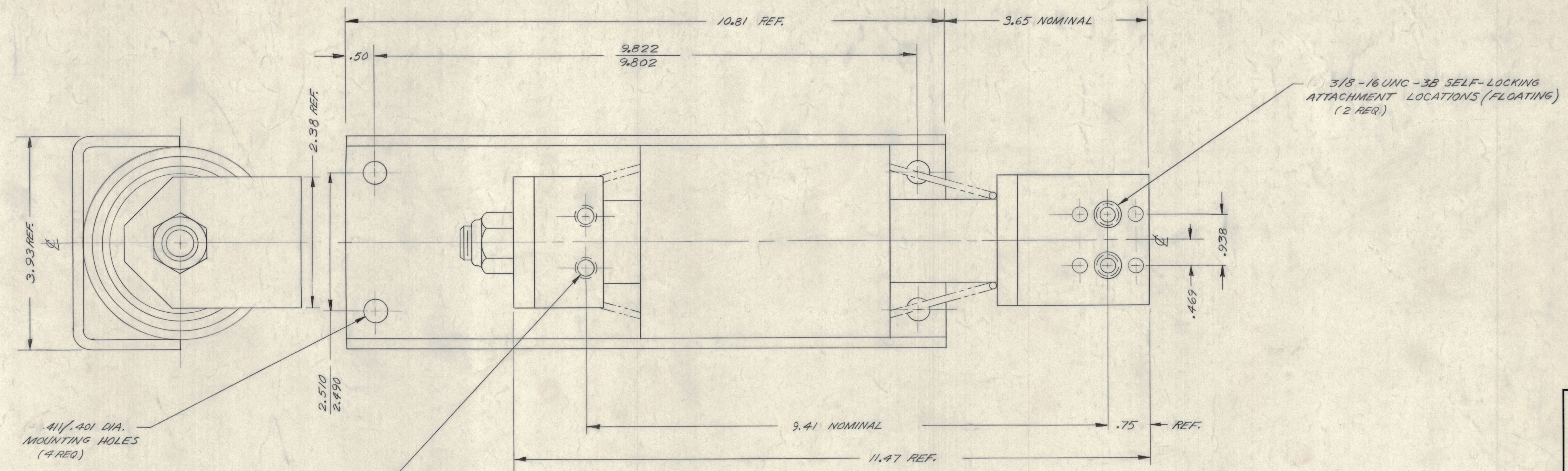


NOTICE TO PERSONS RECEIVING THIS DRAWING

THE TECHNICAL MATERIEL CORPORATION claims proprietary right in the material disclosed herein. This drawing is issued in confidence for engineering information only and may not be reproduced or used to manufacture anything shown hereon without permission from THE TECHNICAL MATERIEL CORPORATION to the user. This drawing is loaned for mutual assistance and is subject to recall at any time.

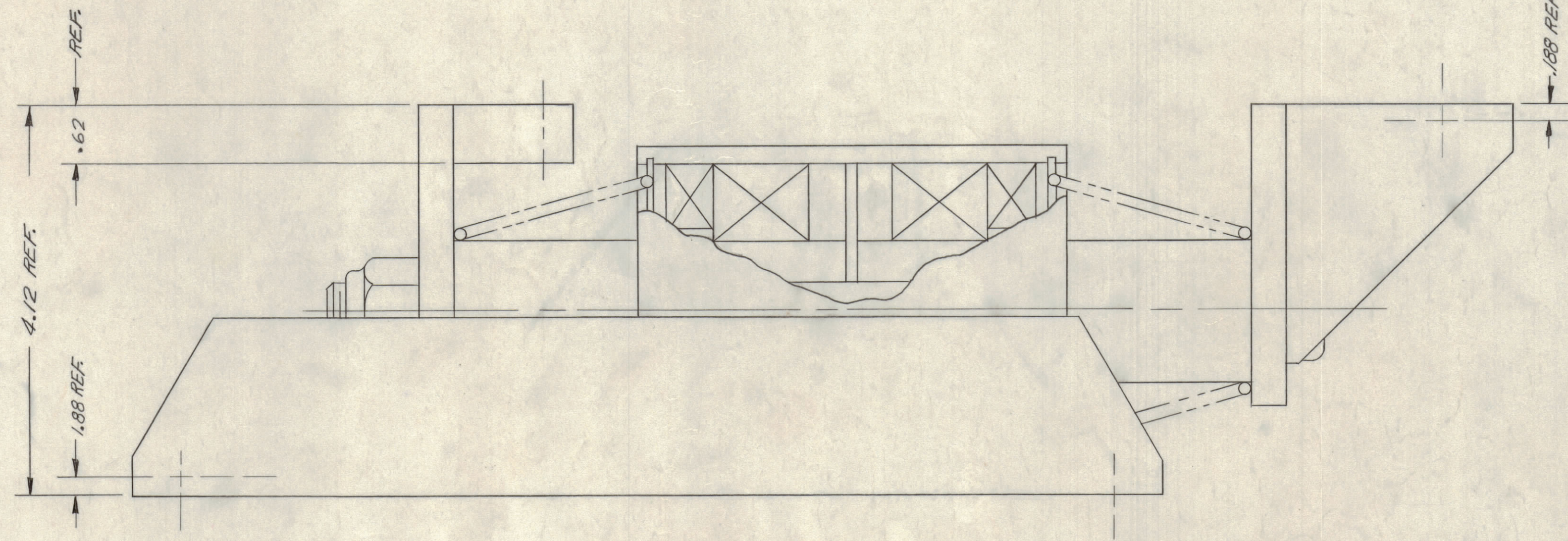
Property of:
THE TECHNICAL MATERIEL CORPORATION
MAMARONECK, NEW YORK



(2) 3/8-16UNC-2B SELF-LOCKING ATTACHMENT LOCATIONS (FIXED) (2 REQ.)

(2) 3/8-16UNC-3B SELF-LOCKING ATTACHMENT LOCATIONS (FLOATING) (2 REQ.)

- NOTES:
1. ALL DIMENSIONS FOR REFERENCE ONLY.
 2. CONSTRUCTION IS FUSION WELDED UNLESS OTHERWISE SHOWN.
 3. APPROX. EQUIPMENT WEIGHT IS 2480 LBS.
 4. WEIGHT OF MOUNTING STABILIZER AS SHOWN IS 17LBS. CALC.
 5. PRIMARY STRUCTURAL PARTS ARE STEEL, ZINC CHROMATE PRIMER & GRAY PAINT. SECONDARY PARTS ARE STEEL-CADMIUM PLATE & STAINLESS STEEL PASSIVATE.



SYM	ZONE	DESCRIPTION	DATE	CH. NO.	DRAFTS	CHECKER	ENG. APP.

UNLESS OTHERWISE SPECIFIED:
SCALE 5-401-152 (W175-15A2)

DIMENSIONS ARE IN INCHES
TOLERANCES ON FRACTIONS ± 1/64 DECIMALS ± .005 ANGLES ± 1/2°

MAXIMUM ALLOWABLE TOLERANCES HAVE BEEN DETERMINED AND ANY DEVIATIONS WILL BE CAUSE FOR REJECTION. REMOVE ALL BURRS & SHARP EDGES

REQ. PER UNIT	MODEL	SECTION	ASS'Y. NO.	DATE	TYPE & TEMPER	HEAT TREAT. SPEC.	FINISH & SPEC. NO.	ELEC. DES. APP.	MECH. DES. APP.	SHEET OF
				11-2-61						54-110

REQ. ITEM	PART NO.	DESCRIPTION	SYMBOL
		THE TECHNICAL MATERIEL CORP. MAMARONECK, NEW YORK	
		STOCK SIZE	
		MATERIAL	
		TYPE & TEMPER	
		HEAT TREAT. SPEC.	
		FINISH & SPEC. NO.	

SH-110