

KIT-238
5956

| | | | | | | | | | | | | | | | | | | | | |
|--------------------------|----|---|---|---|----------|-----------|--|--|-------|-----------|--|--|-------|---|--------------------------------|----|--|--|--|--|
| TMC SPECIFICATION | | | | | | | | | | | | | | | NO. S 956 | | | | | |
| REV: | A | B | C | D | | | | | | | | | | | | | | | | |
| COMPILED: | JZ | | | | CHECKED: | <i>ES</i> | | | APPD: | <i>Ju</i> | | | SHEET | 1 | OF | 11 | | | | |
| TITLE: | | | | | | | | | | | | | | | <i>W/May</i> <i>5/20/65</i> | | | | | |
| Typed by mp 5/14/65 | | | | | | | | | | | | | | | | | | | | |

KIT-238
MODIFICATION OF MCG-1
TO
MCGA-1

TMC SPECIFICATION

NO. S 956

REV:

O A B C D

COMPILED: JZ

CHECKED: *[Signature]*

APPD:

SHEET 3 OF 11

TITLE: KIT-238 - MODIFICATION OF MCG-1 TO MCGA-1

Typed by mtp 5/14/65

II. MATERIALS SUPPLIED - Cont'd

| <u>ITEM</u> | <u>QTY.</u> | <u>TMC PART NUMBER</u> | <u>DESCRIPTION</u> |
|-------------|-------------|------------------------|------------------------------|
| 19 | 20" | MWC22(7)U-0 | Insulated Wire - BLACK |
| 20 | 1 | DD-111-1 | Suppressor, Arc |
| 21 | 5" | PX 100-1-053 | Sleeving |
| 22 | 1 | NP 362-44 | Plate, Ident. Coml |
| 23 | 3 | 1N1200A | Scnd Dev, Rect. (CR6005,6,7) |
| 24 | 1 | DRILL, 1/4 DIA. | Drill, Twist |

III. MATERIALS REQUIRED BY INSTALLING ACTIVITY

- 1/2" electrical drill.
- Center Punch.
- Soldering Iron.
- #2 Phillips Screw Driver.
- Volt ohmmeter - Simpson 260 or equivalent.

IV. WIRING PROCEDURE

- Add holes on front chassis for Item 18 using Item 10 as indicated in Figure 1.
- Switch preliminary wiring -
 - All contact numbers and deck symbols are indicated as follows:
 - Switch is read in reference to the Ledex end; i.e. the Ledex is the front of the switch.
 - Deck symbols (A, B, C) are alphabetical starting from the Ledex end; i.e. the first wafer from the Ledex is A, the second is B etc.
 - All contacts are numbered beginning at the top of the switch, and in a counter-clockwise direction. See Figure 5.

TMC SPECIFICATION

NO. S 956

REV:

O A B C D

COMPILED:

CHECKED:

APPD:

SHEET

5

OF 11

TITLE:

KIT-238 - MODIFICATION OF MCG-1 TO MCGA-1

IV. WIRING PROCEDURE - Cont'd

7. Connect remaining wires as follows:

| <u>Wire #</u> | <u>Switch S6001</u> |
|-----------------------|---------------------|
| 14 | B - 3 solder |
| 13 | B - 1 solder |
| 15 | B - 2 solder |
| 12 | B - 4 solder |
| 19 | B - 8 solder |
| 16 | B - 5 solder |
| 17 | B - 6 solder |
| 18 | B - 12 solder |
| Red Wire from J6015-K | C - 8 solder |
| Red Wire from L6001 | C - 5 solder |
| Red Wire from J6015-P | C - 6 solder |

8. Install J6016 connector end of Item 17 to back panel using Items 5, 6, and 7.

8.1. Remove SW343, Symbol S6001 from front panel. Retain knob.

9. Mount Item 18 using Items 1, 2, 3, 4 and 14 as shown in Figure 2. Make sure the shaft is facing the front panel. Mount knob removed in Step 8.1.

10. Turn S6001 (Item 18) so that notch on wafer A, rear, is at pin 2. Mount selector knob so that arrow points to INT.

11. Mount Item 22 to any convenient place on the front panel.

12. Mount R6060 (Item 18.1) to S6001C term. 1 & 2 and the other end to gnd.

13. Mount R5049 (Item 18.1) to S6001B term. 9 & 10 and the other end to gnd.

14. Drill holes as shown in Figure 7 using Item 24.

15. Mount CR6005, 6, 7 in holes drilled in Step 14. Insulate diodes from chassis and mount with anode end on top side of chassis.

16. Stamp top & bottom sides of chassis as shown in Figure 7 using Item 13.

17. Connect leads from CA1123 as follows to anodes of diodes

| | | |
|------|---|--------|
| Blue | - | CR6005 |
| Wht | - | CR6006 |
| Grn | - | CR6007 |

18. Connect wires from CA1123 as follows to cathodes of diodes

| | | |
|------|---|--------|
| Blue | - | CR6005 |
| Wht | - | CR6006 |
| Grn | - | CR6007 |

TMC SPECIFICATION

NO. S 956

REV: 0 A B C D

COMPILED: JZ CHECKED: ~~JS~~ APPD: SHEET 7 OF 11

TITLE: KIT-238 - MODIFICATION OF MCG-1 TO MCGA-1

Typed by mtp 5/17/65

V. TEST PROCEDURE - POWER OFF - Cont'd

3. Place Selector knob to SYN position. Observe the following resistance:

| <u>From</u> | <u>To</u> | <u>Resistance</u> |
|------------------|------------------|-------------------|
| J6013 Center Pin | Ground | INF |
| J6013 Center Pin | J6011 | 0 ohms |
| J6016 - B | J6016 - C | 0 ohms |
| J6002 Center Pin | J6003 Center Pin | 0 ohms |
| J6002 Center Pin | Ground | INF |
| J6016 Pin H | J6016 Pin F | INF |
| J6016 Pin J | J6016 Pin H | 0 ohms |

TMC SPECIFICATION

NO. S 956

REV: 0 ABCD

COMPILED: JE

CHECKED: [Signature]

APPD:

SHEET 8 OF 11

TITLE: KIT-238-MODIFICATION OF MCG-1 TO MCGA-1

FIGURE 1

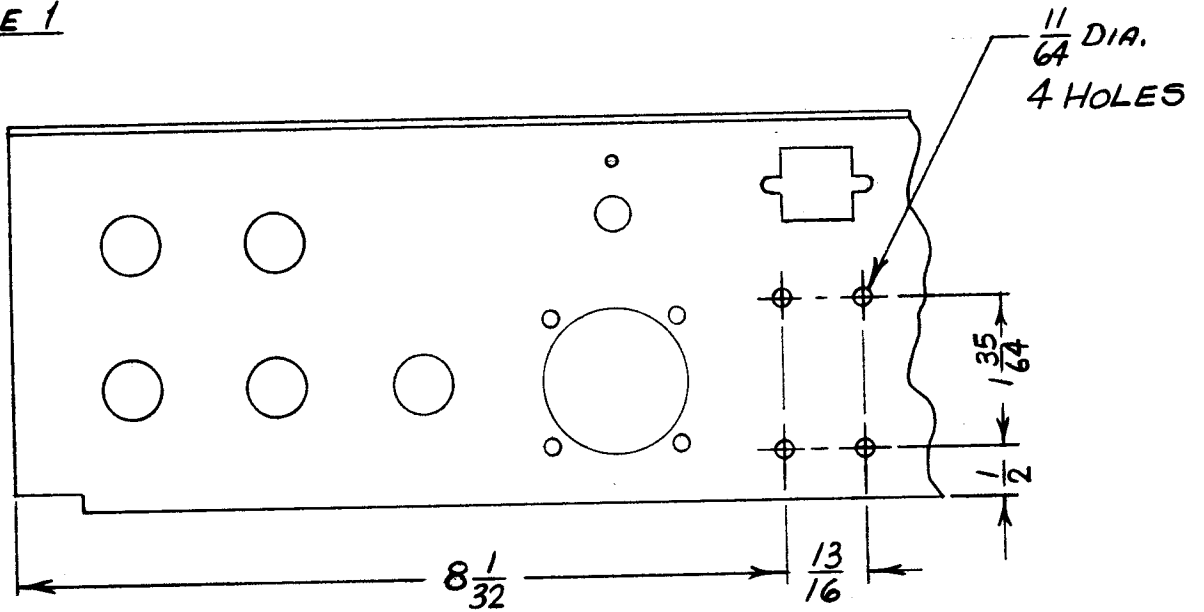
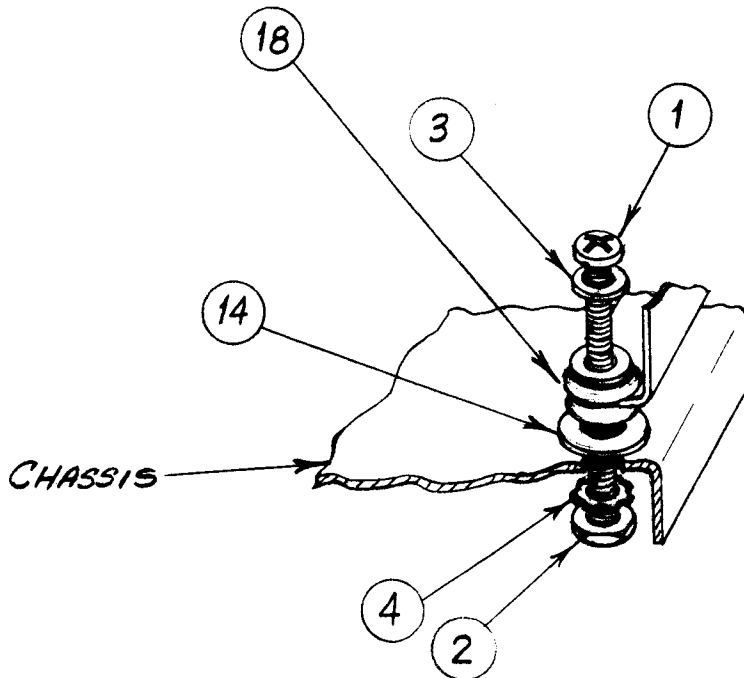


FIGURE 2



TYPICAL MOUNTING
4 PLACES

TMC SPECIFICATION

NO. S 956

REV: 0 A B C D

COMPILED: JZ

CHECKED: *[Signature]*

APPD:

SHEET 9 OF 11

TITLE: KIT238-MODIFICATION OF MCG-1 TO MCGA-1

FIGURE 3

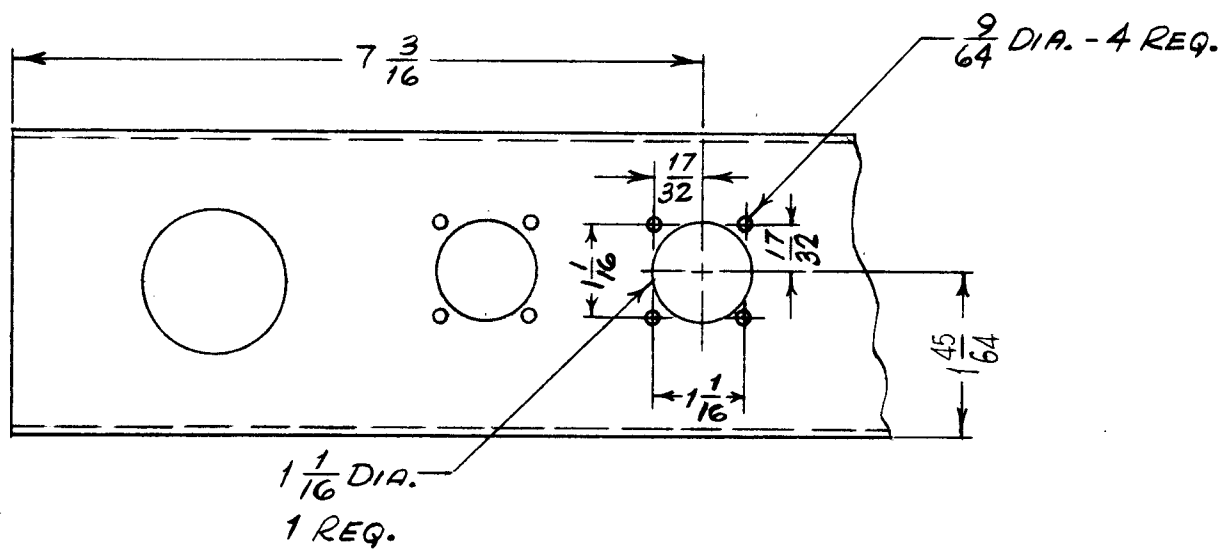
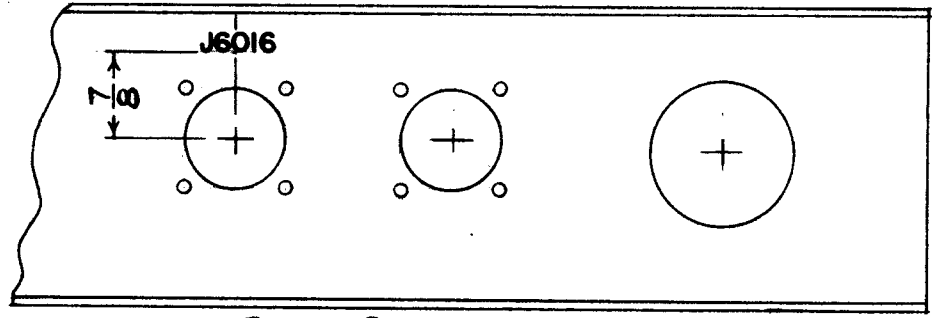
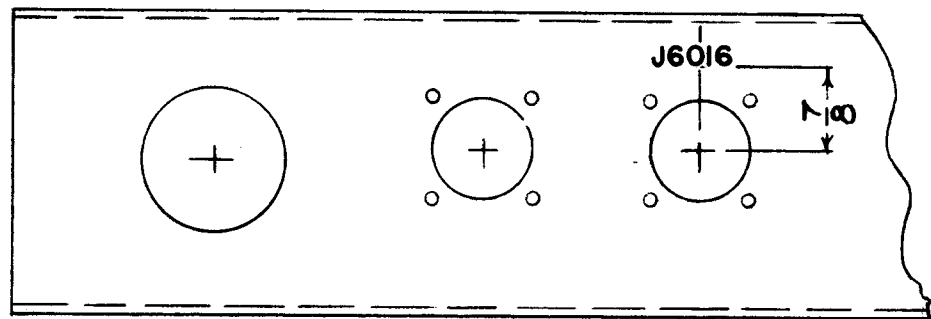


FIGURE 4



REAR PANEL - EXTERIOR VIEW



REAR PANEL - INTERIOR VIEW

TMC SPECIFICATION

NO. S 956

REV: 0A B C D

COMPILED: JZ

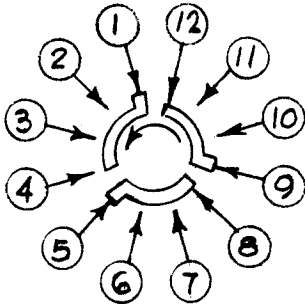
CHECKED: *[Signature]*

APPD:

SHEET 10 OF 11

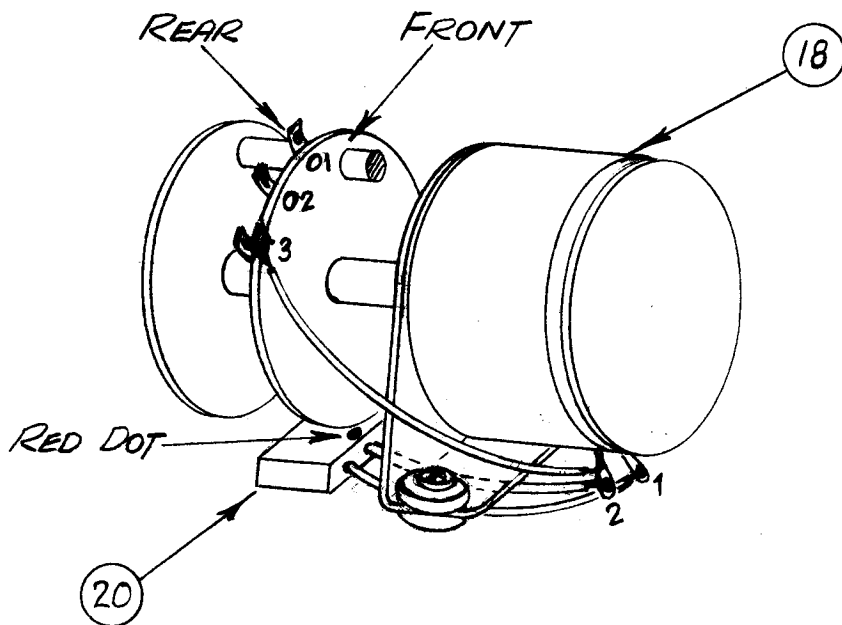
TITLE: KIT 238 MODIFICATION OF MCG-1 TO MCGA-1

FIGURE 5



SWITCH VIEWED FROM LEDEX END.
CONTACTS ARE NUMBERED IN A
COUNTER-CLOCKWISE DIRECTION.

FIGURE 6



TMC SPECIFICATION

NO. S 956

REV: 0 A B C D

COMPILED: JZ

CHECKED: *[Signature]*

APPD:

SHEET 11 OF 11

TITLE: KIT 238 MODIFICATION OF MCG-1 TO MCGA-1

FIGURE 7

