

TMC SPECIFICATION

NO. S 945

REV:

A

COMPILED:

L.M.

CHECKED:

L.B.

APPD:

Q.B.

SHEET

OF

TITLE:

KIT-122

GPT-10K EMERGENCY 1 KW OUTPUT

TMC SPECIFICATION

NO. S 945

REV: A

COMPILED:

CHECKED:

APPD:

SHEET 1 OF 2

TITLE: GPT-10K Emergency 1 KW Output

KIT-122

I. EQUIPMENT AFFECTED:

A. GPT-10K (AN/FRT-39), Transmitter Set, Radio

II. PURPOSE:

A. To provide 1 kw emergency output from GPT-10K transmitter.

III. MATERIALS SUPPLIED IN THE KIT:

Item	Qty.	Part No.	Description
1.	1	CA-582-1	Cable Ass'y RF
2.	1	UG-1019/U	Adapter
3.	1	LD-1384	Plastic Plaque
4.	1	TP113RO-3/4	3/4" Dia Greenlee Punch
5.	1		3/8" drill bit
6.	1	NP362-42	Nameplate

IV. TOOLS REQUIRED:

A. TO BE PROVIDED BY INSTALLING ACTIVITY

1. Screwdriver 6" Phillips
2. Screwdriver 6" flat head
3. Two wrenches adjustable 12"
4. Power drill 3/8" chuck

V. PROCEDURE:

1. Remove all power to GPT-10K.
2. Remove back shield from 10K Main Frame.
3. Short to ground all H. V. Points.
4. Remove front windows from 10K Main Frame.
5. Ref Fig-1 Mark, Center Punch, drill (item 5) and enlarge hole with greenlee (item 4) as shown.
6. Ref fig-2, install UG-1019/U as shown.
7. Ref LD-1384 (item 3) for the following instructions.
 - a. Remove MS-202-22-7.50 strap.
 - b. Transfer P1009 from J901 (base of P. A. tube) to bottom of CP-900. (UG-1019/U.)
 - c. Connect CA-582-1 (item 1) to top side of CP-900 inside P. A. section.
 - d. Connect the CA-582-1 end with terminal lugs to LD-256 (PX-453) mounting for C911.

TMC SPECIFICATION

NO. S 945

REV:

A

COMPILED:

CHECKED:

APPD:

SHEET 2 OF 2

TITLE:

GPT-10K Emergency 1 KW Output

KIT-122

- VI. Check that all connections are secure.
- VII. Using air pressure hose or vacuum cleaner, clean equipment.
Ensure all drilling residue is removed.
- VIII. Affix plaque (item 3) inside 10K Main Frame adjacent to CP-900.
- IX. Replace back shield and front window on 10K Main Frame.
- X. This completes modification.
- XI. Affix item 6 on relay panel cover along side of existing nameplate.

TMC SPECIFICATION

NO. S 945

REV: ~~A~~

COMPILED:

CHECKED:

APPD:

SHEET

OF

TITLE: KIT-122

PT-10K EMERGENCY 1-KW OUTPUT

TOP FRONT OF PA CHASSIS

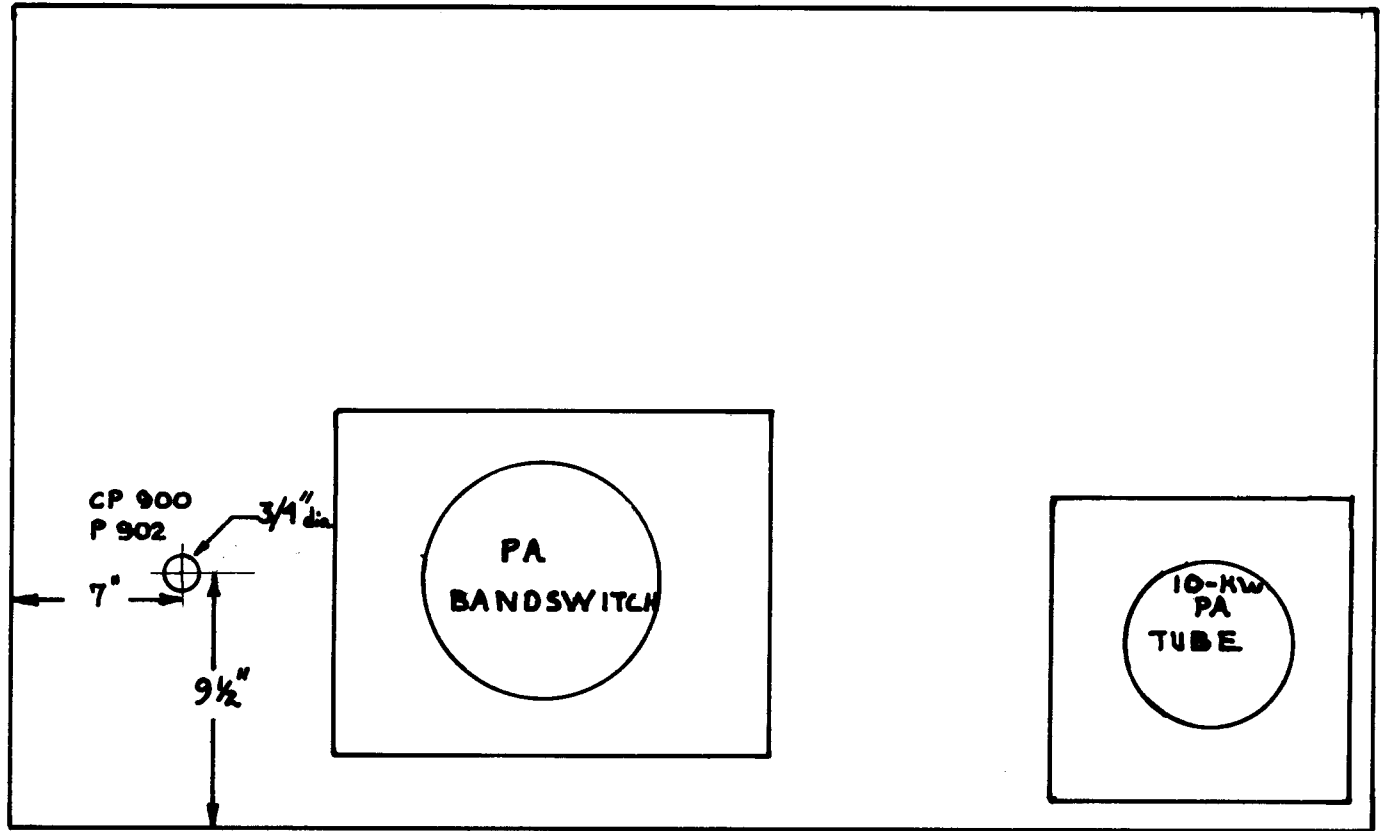


FIGURE 1. MAIN FRAME PA CHASSIS, TOP VIEW

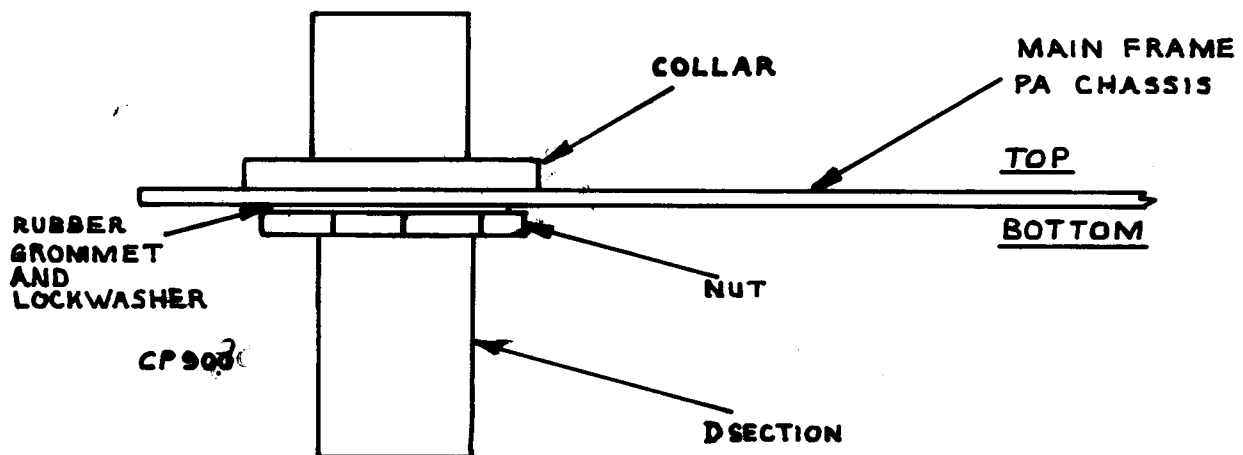


FIGURE 2. MAIN FRAME PA CHASSIS, SIDE VIEW

