

# TMC SPECIFICATION

NO. S1343

REV: *0*

COMPILED: *JK*

CHECKED: *JK*

APPD: *OB*

SHEET

1

OF

5

TITLE:

TFP-1K INSTALLATION KIT

KIT- 400

# TMC SPECIFICATION

NO. S1343

REV: 0

COMPILED:

CHECKED:

APPD:

SHEET 2 OF 5

TITLE:

TFP-1K INSTALLATION KIT

## I. EQUIPMENT AFFECTED:

A. TMC MODEL HFT-1K HIGH FREQUENCY TRANSMITTERS.

## II. PURPOSE:

The TFP-1K, harmonic filter when used in conjunction with the HFT-1K transmitter provides additional harmonic suppression throughout the frequency range of 2MHz to 30MHz.

## III. MATERIALS SUPPLIED IN KIT

<u>ITEM No.</u>	<u>AMOUNT</u>	
1	one ea.	TMC No. TFP-1K HARMONIC FILTER
2	one ea.	TMC No. CABLE ASSY CA 480-36-108
3	one ea.	TMC No. CABLE ASSY CA 480-36-36
4	one set	TMC No. TK105-18 EQUIPMENT SLIDES & MOUNTING HARDWARE
5	one ea.	TFP-1K TECHNICAL MANUAL

## IV TOOLS REQUIRED:

To BE PROVIDED BY THE INSTALLING ACTIVITY

1. Soldering iron (small tip) and solder
2. Medium Phillips screwdriver
3. 6" Pliers, diagonal cutting
4. 6" Pliers, longnose
5. 3/8" open end wrench (or equivalent)

## V. PROCEDURE:

REMOVE ALL INPUT POWER FROM TRANSMITTER BEFORE INSTALLATION OF TFP-1K.

### A. TLAA-1K MODIFICATION

1. Remove rear panel from transmitter cabinet.
2. Disconnect all cables connected to TLAA-1K, RF AMPLIFIER.
3. Loosen panel locks and remove TLAA-1K from cabinet and place rightside up on a suitable work bench.
4. Remove top cover.(save hardware)

# TMC SPECIFICATION

NO. S1343

REV: 0

COMPILED:

CHECKED:

APPD:

SHEET 3

OF 5

TITLE:

TFP-1K INSTALLATION KIT

5. Disconnect all leads connected to directional coupler DC 101.
6. Loosen coupler mounting screws and remove directional coupler. (save hardware)

## NOTE

The Directional coupler and ALDC assembly board (A4850) must be mounted in the TFP-1K when the TFP-1K is used in the system. All leads disconnected from the coupler and ALDC assembly board must be taped and tied to cable harness.

7. Disconnect the leads soldered to PC board A4850. (Do not disconnect capacitors)
8. Loosen PC board mounting screws and remove PC board A4850. (Save hardware).
9. Remove small plate located on TLAA-1K rear panel to expose output connector mounting holes (J1006).
10. Remove output connector jack from existing location and relocate output connector jack and RF choke on extreme right side of rear panel into exposed mounting holes marked J1006.
11. Remove hardware adjacent to J1006 and mount RF choke to rear panel.
12. Use mounting hardware and secure output connector J1006 and RF choke to TLAA-1K rear panel.
13. The output coil L1301 must be reconnected to output connector J1006. Remove spade lug from L1301 and solder that end to J1006.
14. Check and insure that all connections are properly made and all hardware is tight.
15. Replace top cover and place TLAA-1K back into transmitter cabinet.

## B. TFP-1K MODIFICATION

1. Place Harmonic Filter, TFP-1K (item 1) on suitable work bench and remove top cover.
2. Mount directional coupler and ALDC PC board assembly A4850 on rear panel of TFP-1K as shown in figure 1.
3. Connect input and output terminals on directional coupler as shown in figure 1.
4. Connect leads to ALDC assembly as shown in figure 1.
5. Check and insure that all connections are properly made and replace top cover.

## C. TRANSMITTER CABINET MODIFICATION

1. Remove blank panel from transmitter cabinet
2. Install equipment slides (item 4) using hardware provided.

# TMC SPECIFICATION

NO. S1343

REV: ①

COMPILED:

CHECKED:

APPD:

SHEET 4

OF 5

TITLE:

TFP-1K INSTALLATION KIT

3. Place TFP-1K into transmitter cabinet and adjust slides as necessary until TFP-1K is properly aligned in cabinet.
4. Connect all cables removed in step A (2) to the TLAA-1K except the RF output cable marked J1006.
5. Connect CA 480-36-108 (item 2) to J1006 on the TLAA-1K and connect the other end to TFP-1K INPUT (J402).
6. Remove existing cable connected to interface panel J10 and connect CA 480-36-36 (item 3) from J10 on interface panel to RF OUTPUT jack on TFP-1K (J403)
7. Remove cable connected to J2002 (located on right rear wall of cabinet and connect this cable to J401 on rear panel of TFP-1K.
8. The existing RF output cable formerly used may tied back in cable harness or removed as desired.
9. This completes the installation procedure for the TFP-1K. Refer to Harmonic filter instruction manual (item 5) for operating procedures, principles of operation and parts list.

# TMC SPECIFICATION

NO. S 1343

REV:  $\emptyset$

COMPILED:

CHECKED:

APPD:

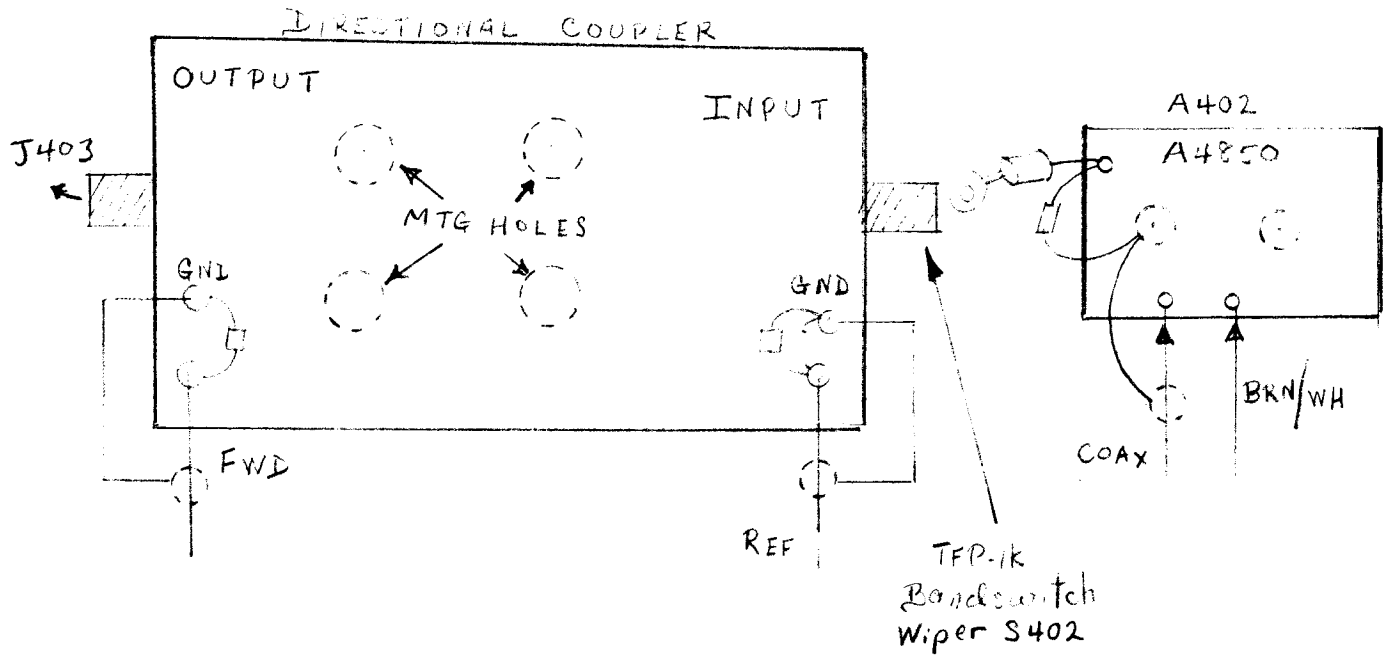
SHEET 5

OF 5

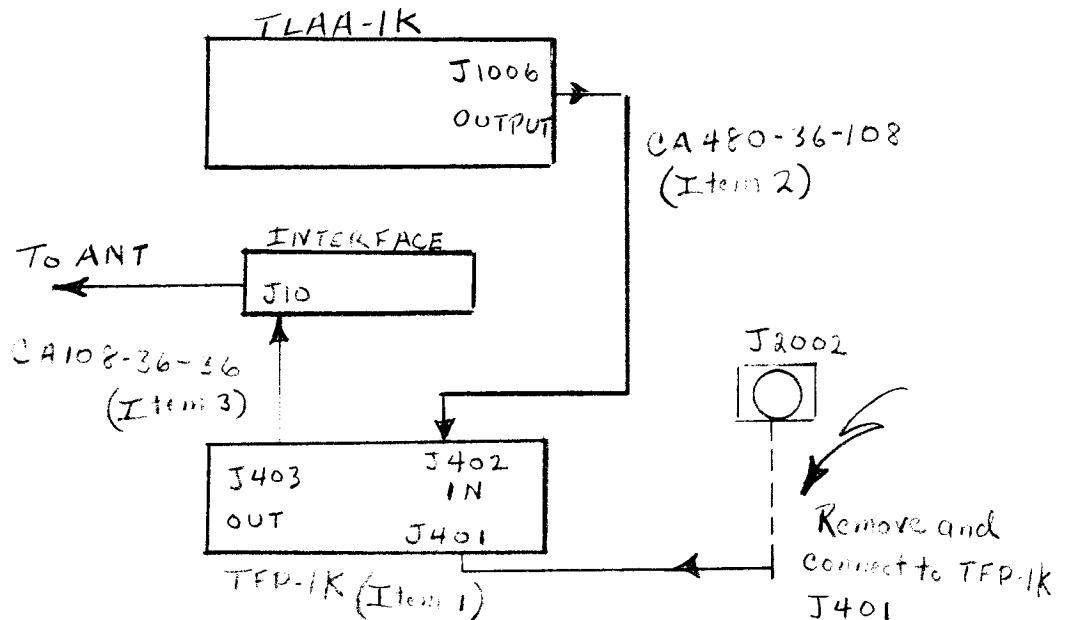
TITLE:

TFP-1K INSTALLATION KIT

FIGURE-1



TFP-1K REAR PANEL WH/DIRECTIONAL COUPLER AND ALDCA Assy



RF PATH THRU HARMONIC FILTER