

TMC SPECIFICATION

NO. S 1286

REV: 0

COMPILED:

CHECKED:

APPD: 

SHEET

OF

TITLE:

KIT 378

Receiver Attenuator Assembly

TMC SPECIFICATION

NO. S 1286

REV: 0

COMPILED:

CHECKED:

APPD:

SHEET 1

OF 8

TITLE: Receiver Attenuator Assembly KIT 378

1-1 FUNCTIONAL DESCRIPTION

The Technical Materiel Corporation KIT 378 is designed for use with a receiver system that requires fixed antenna attenuation from 0db to 40db. The Antenna Attenuator, KIT 378 provides fixed antenna attenuation in 10db steps, (0db, 10db, 20db, 30db and 40db). Attenuator selection is accomplished with a single front panel mounted selector switch.

In addition to Attenuator selector switch, the KIT 378 provides remote "in" and "out" of a pre-selected attenuator, together with a set of contacts for READBACK of the attenuator "IN" "OUT" state .

Functionally the Antenna input signal is routed through a set of normally closed relay contacts and re-routed to the attenuator selector switch wiper. When either one of four attenuator positions are selected, the antenna signal is routed through the switch contact, through a second set of normally closed relay contacts and re-routed to antenna OUTPUT jack.

When it is desired that attenuation is not required at a certain time of reception, the application of -12VDC at terminal (2) and ground at terminal(1) will energize the "IN" "OUT" relay which in effect by passes the attenuator selector switch removing all attenuation.

Terminals (3) and (4) are provided for readback "IN" and "OUT" status of KIT 378.

Readback is as follows:

Readback Attenuation "IN" Terminals (3) & (4) open

Readback Attenuation "OUT" Terminals (3) & (4) closed

TMC SPECIFICATION

NO. S 1286

REV: 0

COMPILED:

CHECKED:

APPD:

SHEET 2 OF 8

TITLE: Receiver Attenuator Assembly KIT 378

1-2 PHYSICAL DESCRIPTION (Refer to Figure 2)

The KIT 378 is packaged as a single assembly which is 5-3/4" high x 3" wide x 2" deep. Antenna attenuator switch is mounted on the engraved front panel. Each switch position is clearly marked for each quantity of attenuation desired. Terminal strip marked 1 thru 6 is also front panel mounted to simplify interconnection of control lines. Antenna INPUT jack (BNC type) is located on the top of the assembly an antenna OUTPUT jack is located on the bottom.

INSTALLATION

2-1 GENERAL

KIT 378 is normally mounted and wired to the equipment in the rack prior to shipping, however when KITS are to be installed on existing equipment the following installtion procedure should be followed:

2-2 INSTALLATION PROCEDURE (for existing equipment)

A. Refer to Figure 2 for mounting holes drilling information. (four mounting holes will be required) bear in mind that, KIT 378 should be mounted in existing receiver rack in a location that will provide easy access to antenna attenuator switch and control line interconnections.

B. After KIT 378 assembly is mounted securely to existing equipment make the following control line connections as indicated below.

KIT 378 Terminal strip

1	2	3	4	5	6
ground	-12vdc	readback	spare	spare	

Connect existing antenna to INPUT jack (BNC)

Connect existing receiver to OUTPUT jack (BNC)

TMC SPECIFICATION

NO. S 1286

REV: 0

COMPILED:

CHECKED:

APPD:

SHEET 3

OF 8

TITLE: Receiver Attenuator Assembly KIT 378

NOTE

Terminals (1) & (2) are for attenuator "IN" or "OUT", provide a suitable device (switch, latching pushbutton, etc) for terminal (1) and/or terminal (2) for the attenuator switch IN or OUT function.

2-3 INSTALLATION PROCEDURE FOR COR-4B SYSTEM ONLY

- 1- Refer to Figure 2 for mounting hole drilling location.
- 2- Remove receiver equipment as necessary to allow space for drilling mounting holes and installation of KIT 378 assembly.
- 3- Drill mounting holes on the right wall (as viewed from the rear of equipment rack) and mount KIT 378 assembly utilizing mounting holes and hardware provided.
- 4- Make the following interconnections as indicated below:

KIT 378

Interface Panel TB101

Terminal 1	connect to	Terminal 6
2	connect to	Terminal 8
3	connect to	Terminal 9
4	connect to	Terminal 10
5	spare (no connections)	
6	spare (no connections)	

INPUT jack

temporarily remove cable connected to HFD'S OUTPUT jack(s). Connect OUTPUT (on KIT 378) to HFD OUTPUT jack.

OUTPUT jack

Connect cable that was temporarily removed to Attenuator OUTPUT jack.

- 5- Provide a suitable device that will apply a ground connection to Interface Panel T101 terminal (8).

- 6- Connect Readback device between terminals (9) & (10) on Interface Panel TB106.

TMC SPECIFICATION

NO. S 1286

REV: \emptyset

COMPILED:

CHECKED:

APPD:

SHEET

5

OF

8

TITLE: Receiver Attenuator Assembly KIT 378

TMC P/N	Description	Quantity
SCPBO632BN5	Screw, Machine	4
NTHO632BN8	Nut	4
LWE06MRN	Lockwasher	4
PL244-1	Connector, Plug	2

TMC SPECIFICATION

NO. 5 1286

REV: 0

COMPILED:

CHECKED:

APPD:

SHEET 6

F 8

TITLE: Receiver Attenuator Assembly KIT 378

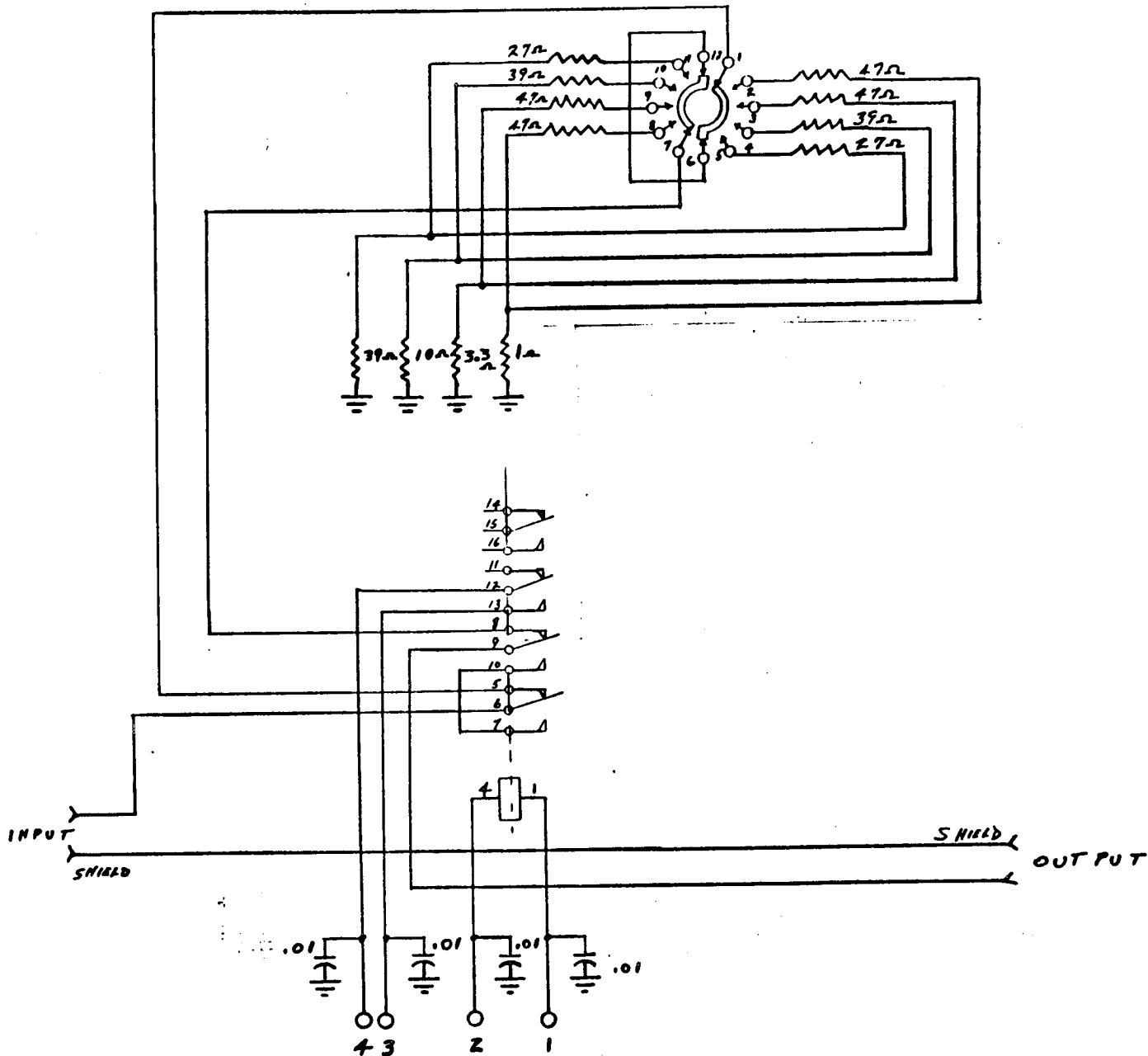


Figure 1

TMC SPECIFICATION

NO. S 1286

REV: 0

COMPILED:

CHECKED:

APPD:

SHEET 7 F 8

TITLE: Receiver Attenuator Assembly KIT 378

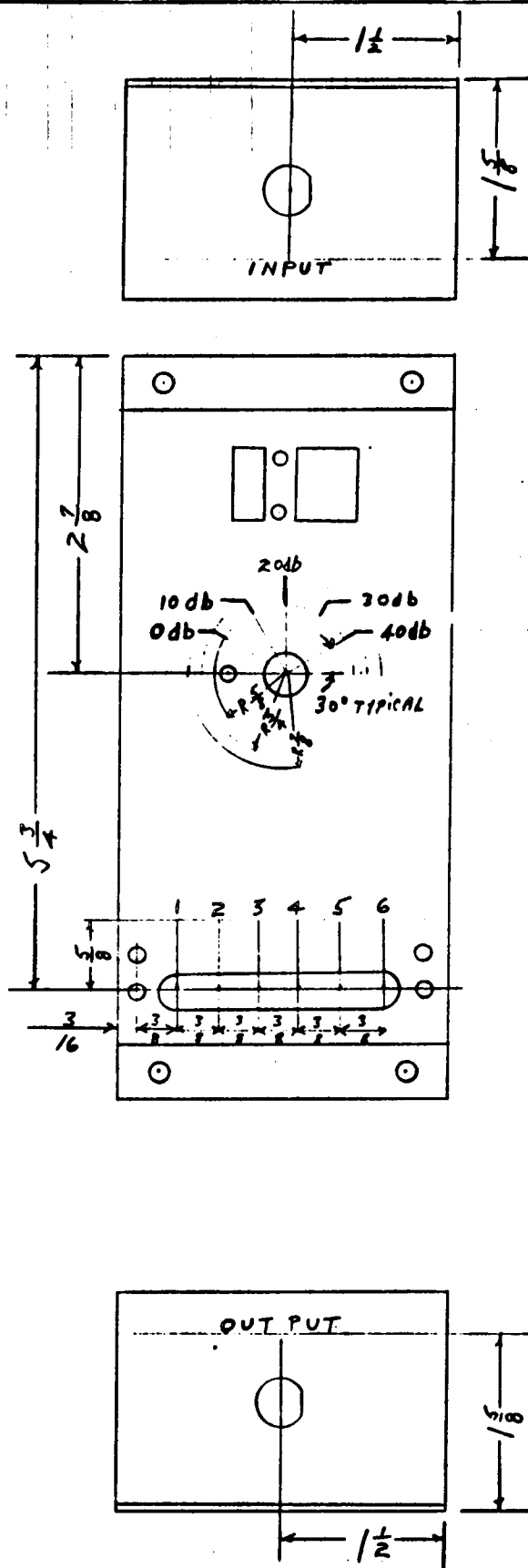


Figure 2 (sheet 1)

TMC SPECIFICATION

NO. S 1286

REV: \emptyset

COMPILED:

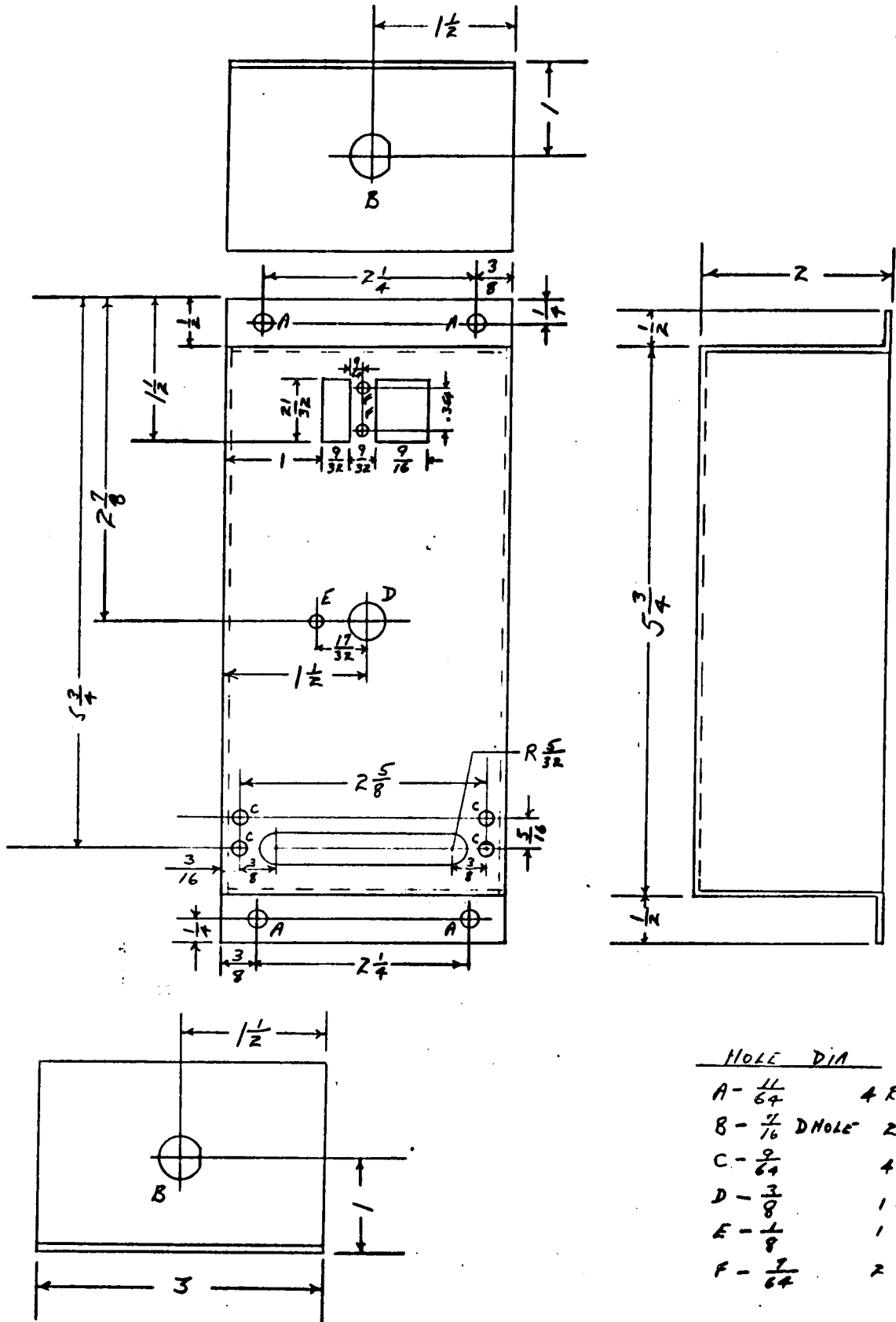
CHECKED:

APPD:

SHEET 8

F 8

TITLE: Receiver Attenuator Assembly KIT 378



HOLE DIA	
A - $\frac{11}{64}$	4 REQ
B - $\frac{7}{16}$ D HOLE	2 REQ
C - $\frac{9}{64}$	4 REQ
D - $\frac{3}{8}$	1 REQ
E - $\frac{1}{8}$	1 REQ
F - $\frac{7}{64}$	2 REQ

Figure 2 (sheet 2)

