

TMC SPECIFICATION

NO. S-10189

REV:

0

COMPILED: L.J./M.P.

CHECKED:

APPD:

SHEET

OF

TITLE:

Factory Modification to STE-5

DATE 16/4/69
SH. 1 OF 8
COMPILED BY

TMC SPECIFICATION NO. S-10189

TITLE: Factory Modification to STE-5

JOB

APPROVED

TO ADD THE FACILITY OF REMOTE MODE SWITCHING TO AN STE-5, THE FOLLOWING CHANGES ARE REQUIRED:

CK10525 (SEE SHT 3)

Add CR1501 (IN914) Between S1503 -Rear 3 & S1503 - Rear 6
(Cathode connected to Rear 3).

Add CR1502 (IN914) Between S1503 - Rear 5 & S1503 - Front 6
(Cathode connected to Rear 5).

Delete connection from R1504 wiper to S1503 -Rear 3, Add conn from R1504 wiper to S1503 - Rear 6. Delete conn from R1505 wiper to S1503 Rear 5, Add conn from R1505 wiper to S1503 - Front 6.

Add L13, C25 & C26 to A10640 Pin 12, Add L12, C23 & C24 to A10640 Pin 6, Add L11, C21 & C22 to A10640/5.

Add connection from A10603 Pin 8 to A10640 L11, Add connection from A10603 Pin 11 to A10640 L12.

Add connection from S1503 Rear 3 to A10640 L13.

A10640 (SEE SHT 4)

Delete jumper between Pins 6
Add C1525, C1526 & L1513 connect to Pins 12.
Add C1523, C1524 & L1512 connect to Pins 6.
Add C1521, C1522 & L1511 connect to Pins 5.
Add jumper between Pins 11.

LD10270 (SEE SHT 5)

Change engraving note.
FROM:- Engraving to be 3/32 high white filled.
TO:- Engraving to be 3/32 high white filled except 'AME'
and associated DOT to be filled red.

LD10271 (SEE SHT 6)

Add marking C25, L13 & C26 adjacent to TB1051 Pin 12.
Add marking C23, L12 & C24 adjacent to TB1051 Pin 6.
Add marking C21, L11 & C22 adjacent to TB1051 Pin 5.

DATE 16/4/69
SH. 2 OF 8
COMPILED BY

TMC SPECIFICATION NO. S-10189

TITLE: Factory Modification to STE-5

JOB

APPROVED

CA10491 (SEE SHT 7)

Wiring list item 65 change From:- BKOUT G/S1503 Pin 3 (Rear).
To:- BKOUT G/S1503 Pin 6 (Rear).

Wiring list item 67 change From:- BKOUT G/S1503 Pin 5 (Rear).
To:- BKOUT G/S1503 Pin 6 (Front).

Add to wiring list:-

BKOUT (FROM) COMPONENT	BKOUT (TO) COMPONENT	ITEM	PT. NO.	DESCRIPT.
G S1503 Pin 3	H A10640 Pin 12	81	MWC24(7)U93	Wire Elecans
L A10603 Pin 11	H A10640 Pin 6	82	" " " "	"
L A10603 Pin 6	H A10640 Pin 5	83	" " " "	"

AT BKOUT G, Delete branch with items 16 & 17, add 16 & 17 to branch containing items 4 & 5.
Delete Pin no. 5 symbol from item 67, change item 65 to item 81.
Add new wire item 65, adjacent to item 26, at end of BKOUT.
Increase length of item 26 to 2.25 in. Increase length of items 63, 58 to 1.75 in.

AT BKOUT P, Increase all wire lengths by .75 in.

AT BKOUT L, Add item 83 to item 46.
Add item 82 to item 26.

AT BKOUT H, Add item 81 (connected to Pin 12) between items 76 & 10.
Add items 82 (connected to Pin 6) & 83 (connected to Pin 5) between items 79 & 43.

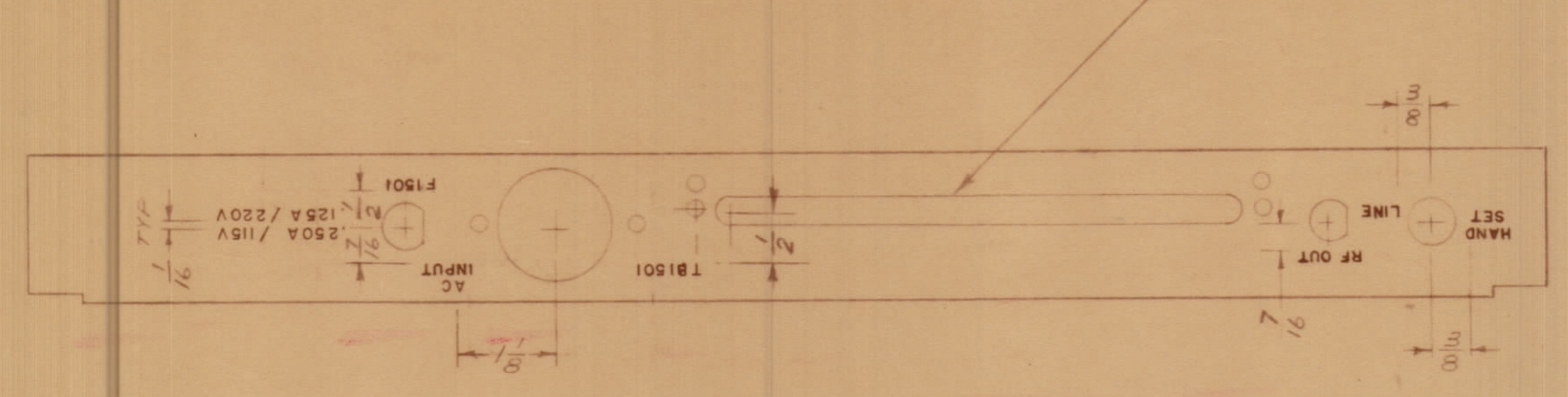
A10540-5 (SEE SHT 8)

Add R1736 to UNIDENTIFIED holes.

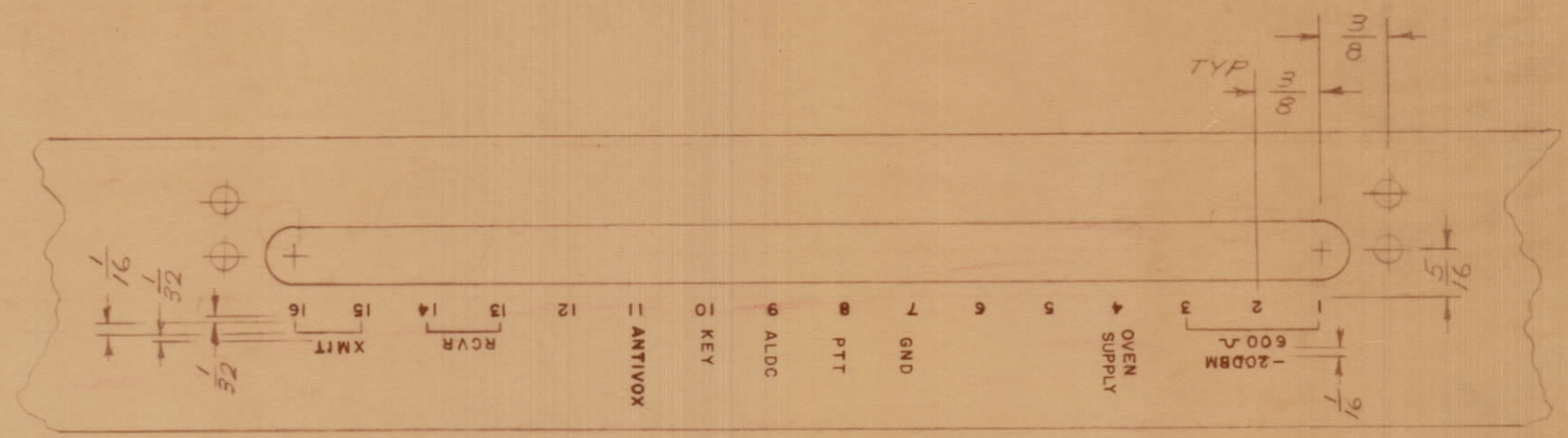
ADDITIONAL COMPONENTS REQUIRED:

CC100-29	Cap Fixed Ceramic	Qty.6 (C21, C22, C23, C24, C25, C26)
CL275-151	Coil RF Fixed	Qty.3 (L11, L12, L13)
RC 20GF563J	Resistor Fixed Comp.	Qty.1 (R1736)
IN 914	Diode	Qty.2 (CR1501, CR1502)

SEE DETAIL "AA"

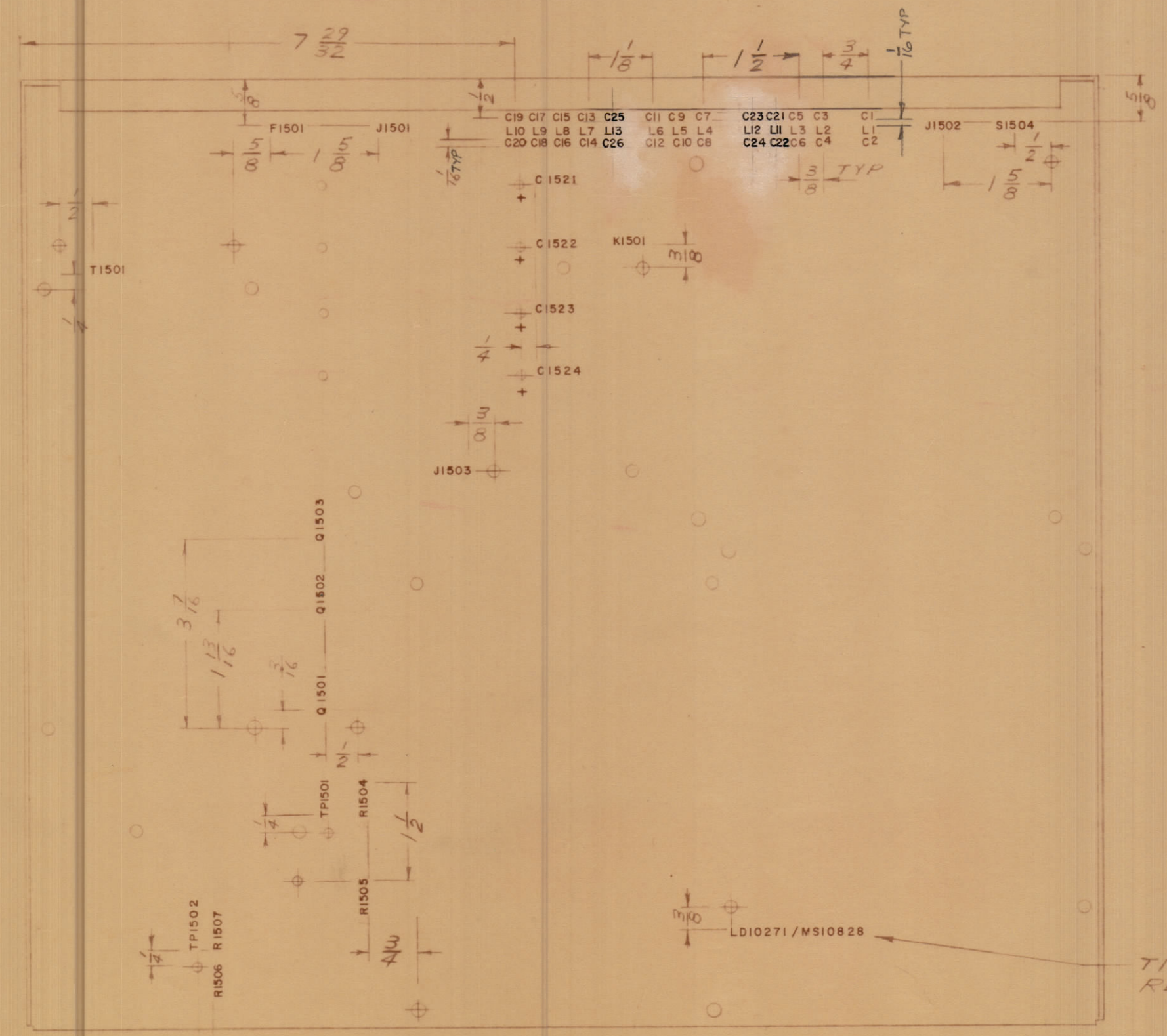


EXTERIOR VIEW



LETTERING 1/16 HIGH

DETAIL "AA"
SCALE 1:1



MARKING PROCESS: AS PER TMC SPECIFICATION S-727.
LETTERING: 1/8 HIGH BLACK GOTHIC, LOCATED AS SHOWN.

510189

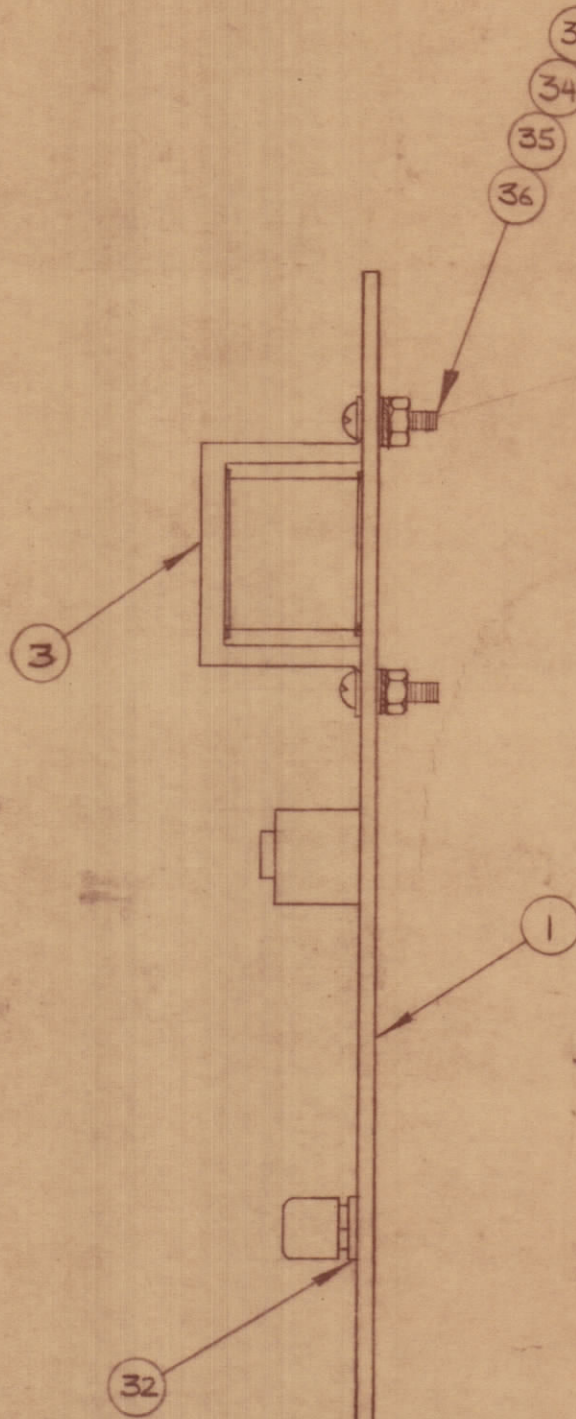
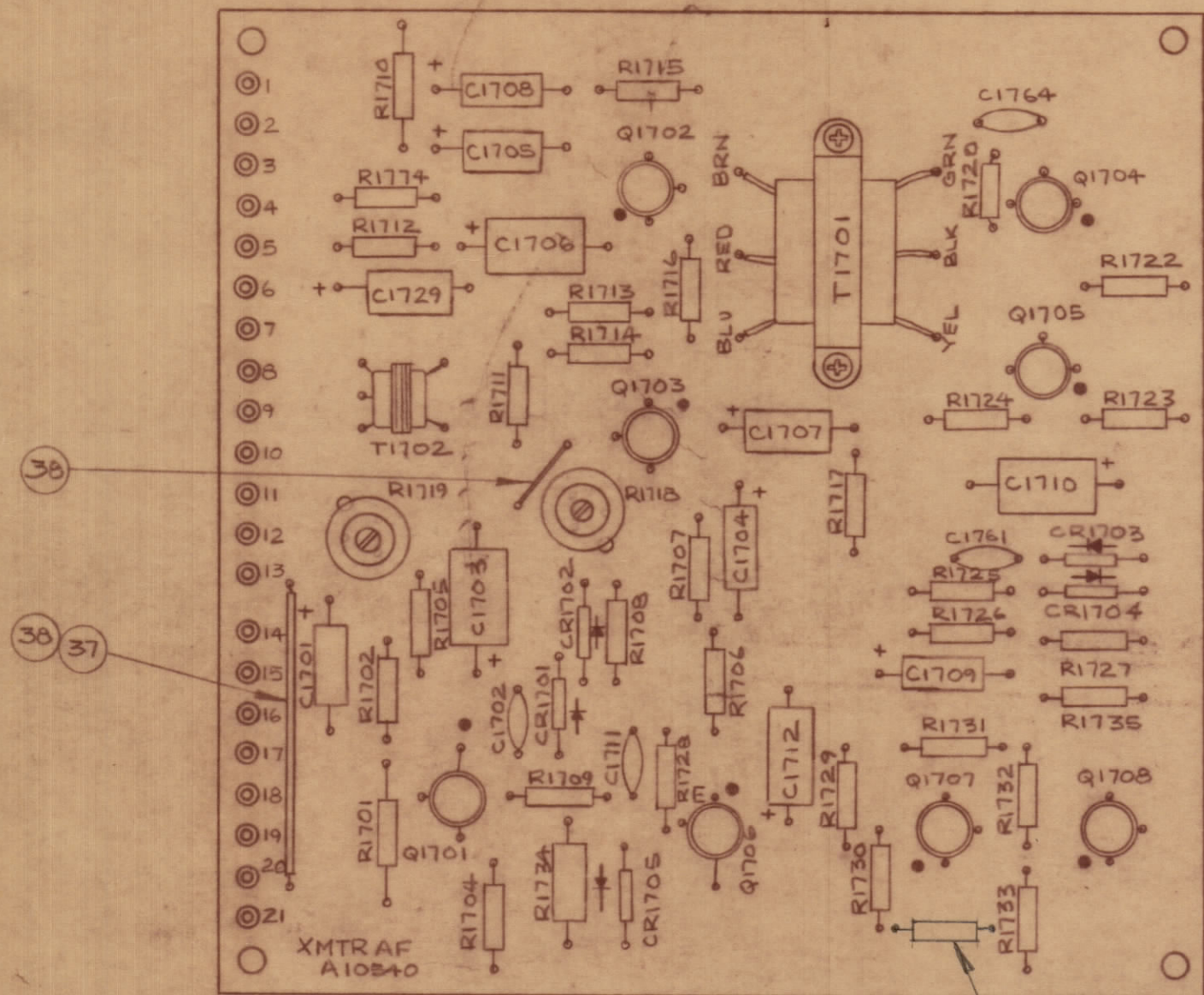
TMC PART NO 'w LATEST REVISION LETTERS

REF: MS10828

TOLERANCES		SCALE: 1:2
ALL OTHERS	DEC DIM FRACTIONAL DIM ANGULAR DIM	DRILL, PUNCH, COMMERCIAL STOCK SIZES AND MANUFACTURERS TOLERANCES ARE NOT INCLUDED

STE-5	060/67	BMA10634	19 JUNE 67
MODEL	PROJECT NO.	ASSY. NO.	DATE

STOCK SIZE		TMC (Canada) LIMITED OTTAWA ONTARIO	
MATERIAL		MARKING CHASSIS	
WEIGHT PER PC		RD	
TYPE & TEMPER		DRAWN	ELEC. DES. APP. MECH. DES. APP.
HEAT TREAT. SPEC		CHECKED	FINAL APPROVAL
FINISH & SPEC. NO.		SHT 6 of 8, 510189	



REQ	ITEM	PART NO.	DESCRIPTION	SYMBOL
1	1	A10540-4	SUB ASS'Y. PC BOARD XMTR AF	
1	2	TF246-17Z	TRANSFORMER, AUDIO	T1702
1	3	TF267-4	TRANSFORMER, AUDIO	T1701
5	4	IN 34A	SEMICON DEVICE, DIODE	
1	5	2N2001	TRANSISTOR	Q1708
2	6	TX106/2N1308	TRANSISTOR	Q1701 Q1706
5	7	TX107/2N1370-4	TRANSISTOR	
4	8	CC100-33	CAPACITOR, FIXED CERAMIC DISC.	
1	9	CE105-4-15	CAPACITOR, FIXED ELECTROLYTIC	C1708
3	10	CE105-10-15		
3	11	CE105-50-15		
3	12	CE105-6-15	CAPACITOR, FIXED ELECTROLYTIC	
1	13	RVIIIU254A	RESISTOR, VARIABLE COMP.	R1719
3	14	RC20GF154J	RESISTOR, FIXED COMP.	
1	15	RC20GF104J		R1728
1	16	RC20GF683J		R1708
1	17	RC20GF223J		R1701
7	18	RC20GF103J		
2	19	RC20GF822J		R1732 R1715
2	20	RC20GF562J		R1727 R1723
3	21	RC20GF472J		
1	22	RC20GF392J		R1716
2	23	RC20GF332J		R1711 R1710
2	25	RC20GF102J		R1726 R1717
1	26	RC20GF221J		R1712
1	27	RC20GF101J		R1774
1	28	RC20GF155J	RESISTOR, FIXED COMP.	R1720
1	29	RC32GF330J	RESISTOR, FIXED COMP.	R1734
1	30	RVIIIU501A	RESISTOR, VARIABLE COMP.	R1718
1	31	CE105-20-15	CAPACITOR, FIXED ELECTROLYTIC	C1712
8	32	PXB29-1	PAD, MOUNTING TRANSISTOR	
2	33	FW04HBN	WASHER, FLAT	
2	34	LWE04MRN	WASHER, LOCK EXTERNAL	
2	35	NTH0440BN8	NUT, HEX.	
2	36	SCBP0440BN4	SCREW, MACHINE	
2"	37	PX104-1-.022	SLEEVING, INSULATION	
AR	38	WL100-8	WIRE, BUSS #24	
AR	39	BS100	SOLDER, SOFT	
1	40	RC20GF563J	RESISTOR, FIXED COMP.	

TOLERANCES
 ALL OTHERS
 DRILL, PUNCH, COMMERCIAL STOCK
 SIZES AND MANUFACTURERS
 TOLERANCES ARE NOT INCLUDED.

STEAM-1	005/66		
TTR-10 A	005/66	AX 418A	NOV 24/66
MODEL	PROJECT NO.	ASS'Y. NO.	DATE

STOCK SIZE		TMC (Canada) LIMITED OTTAWA ONTARIO	
MATERIAL		ASS'Y PC BOARD TRANSMITTER AF (FINAL ASS'Y.)	
TYPE & TEMPER		RPL	
HEAT TREAT. SPEC.		DRWN	ELEC DES APP
FINISH & SPEC. NO.		CHECKED	FINAL APPROVAL
		SHEET 8 of 8	
		510189	