

DATE 12-16-52

SH. 2 OF 2

COMPILED BY
G.T.O.

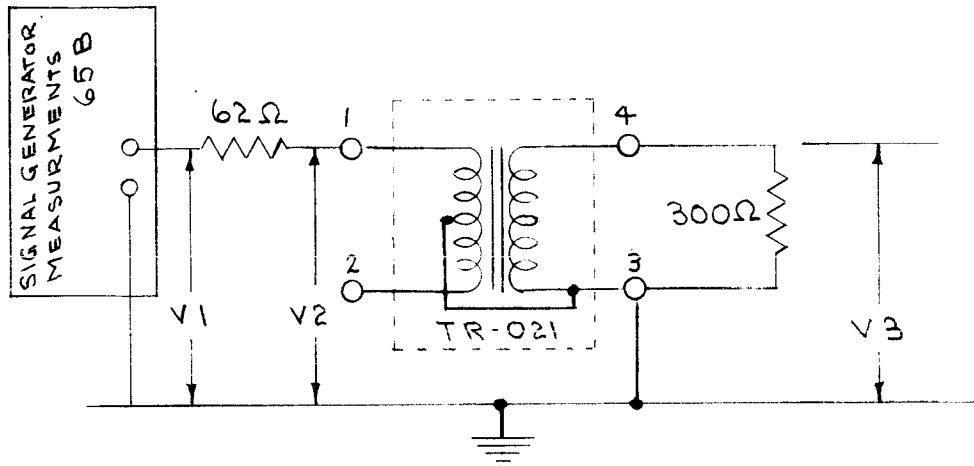
TMC SPECIFICATION NO. S-140 A

TITLE: TEST DATA TR-021

JOB 104

APPROVED G.T.O.

TEST B



75Ω/300Ω TERMINATION. CONNECT TRANSFORMER AS SHOWN. MEASURE VOLTAGE AT INDICATED POINTS. ACTUAL VOLTAGE MUST BE WITHIN ±10% OF NOMINAL VOLTAGE SHOWN IN CHART BELOW.

COPIES OF DATA SHEETS SHOULD BE PREPARED ON DITTO FORM FROM SAMPLE BELOW.

FREQUENCY	V1 (CONST.)	V2 NOMINAL	ACTUAL	V3 NOMINAL	ACTUAL
2 MC	1V.	.42V		.79V	
8 MC	1V.	.41V		.78V	
32 MC	1V	.42V		.66V	
2 MC	.8V	.34V		.66V	
8 MC	.8V	.34V		.65V	
32 MC	.8V	.35V		.55V	

USE HP 410B ON ALL VOLTAGE READINGS
COMMENTS -

TESTED BY _____

DATE _____

ACCEPTED _____

REJECTED _____

A V20153 G.T.O. 12/16/52

DATE 12-16-52
SH. 1 OF 2

TMC SPECIFICATION NO. S-140

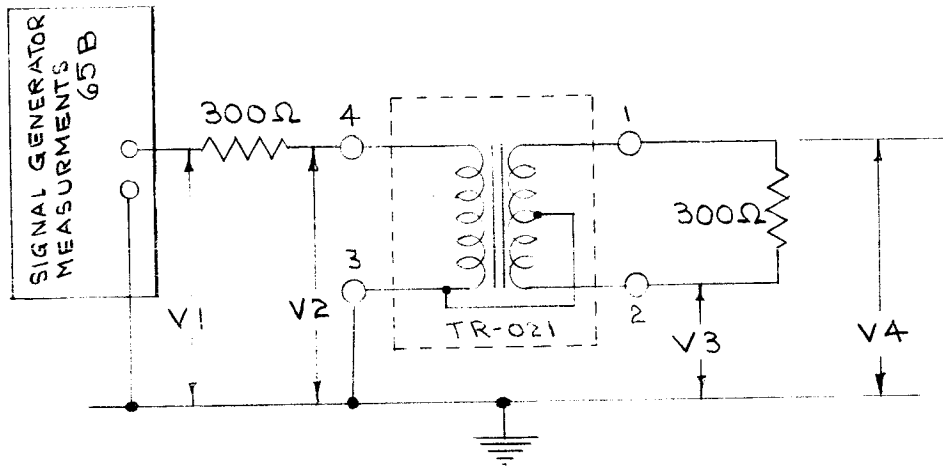
COMPILED BY
G.T.O.

TITLE: TEST DATA TR-021

JOB 104

APPROVED G.T.O

TEST A



300 Ω / 300 Ω TERMINATION. CONNECT TRANSFORMER AS SHOWN. MEASURE VOLTAGE AT INDICATED POINTS. ACTUAL VOLTAGE MUST BE WITHIN ±10% OF NOMINAL VOLTAGE SHOWN IN CHART BELOW.

COPIES OF DATA SHEETS SHOULD BE PREPARED ON DITTO FORM FROM SAMPLE BELOW.

FREQUENCY	V1 (CONST)	V2 NOMINAL	ACTUAL	V3 NOMINAL	ACTUAL	V4 NOMINAL	ACTUAL
2 MC	1V.	.47V		.21V.		.21V.	
8 MC	1V.	.49V		.23V.		.23V.	
32 MC	1V.	.47V		.21V.		.25V.	
2 MC	.8V.	.38V		.18V.		.17V.	
8 MC	.8V.	.40V		.19V.		.19V.	
32 MC	.8V.	.38V		.18V.		.21V.	

USE HP410B ON ALL VOLTAGE READINGS

COMMENTS _____

TESTED BY _____
DATE _____
ACCEPTED _____
REJECTED _____