

# TMC SPECIFICATION

NO. S 1000

REV:

①

COMPILED: 8-5-65 I.J.

CHECKED: *W.G.*

APPD:

*W.H. King*  
*12/9/65*

SHEET 1 OF 8

TITLE:

KIT - 252

MODIFICATION OF TTR-10

TO

TTR-11

# TMC SPECIFICATION

NO. S 1000

REV:

COMPILED:

CHECKED:

APPD:

SHEET

2

OF

8

TITLE:

KIT-252 MODIFICATION OF TTR-10 TO TTR-11

I. EQUIPMENT AFFECTED:

TMC MODEL TTR-10, TRANSMITTER/RECEIVER

II. PURPOSE:

TO CONVERT FOR USE WITH TMC MODEL TTC-1 ANTENNA TUNER.

III. MATERIALS SUPPLIED:

<u>ITEM</u>	<u>QTY</u>	<u>TMC PART NUMBERS</u>	<u>DESCRIPTION</u>
1	1	DRILL-1/8	DRILL, TWIST
2	1	DRILL-3/16	DRILL, TWIST
3	1	DRILL-9/32	DRILL, TWIST
4	1	DRILL-3/8	DRILL, TWIST
5	1	CTR PUNCH	CTR PUNCH
6	1	CSINK-6x82x.284D	CSINK-6x82x.284D
7	1	TM100-11	TERM. BD-BARR
8	1	PX337-11	INS, TERM. BD
9	2	MS154-1	PL, MTG, TERM. BD
10	4	SCBP0440BN10	SCR, MACH
11	4	LWE04MRN	WASH., LK, EXT
12	4	NTH0440BN6	NUT, PLN, HEX
13	1	RW107-13	RES, FXD, WW-5W
14	2	FW06HBN	WASH., FLAT
15	2	LWE06MRN	WASH., LK, EXT
16	2	NTH0632BN8	NUT, PLN, HEX
17	1	SC131-0632BN24	SCR, MACH-UNDC
18	1	SCBP0632BN6	SCR, MACH
19	2	WA102-4	WASH., SHLD-NM
20	1	TE149-144	TERM., LUG-NO. 6

# TMC SPECIFICATION

NO. S 1000

REV: 

COMPILED:

CHECKED:

APPD:

SHEET 3 OF 8

TITLE:

KIT-252 MODIFICATION OF TTR-10 TO TTR-11

### III. MATERIALS SUPPLIED - cont'd

<u>ITEM</u>	<u>QTY</u>	<u>TMC PART NUMBERS</u>	<u>DESCRIPTION</u>
21	1	CU102-3	CLAMP, LOOP
22	12	PX830-24-1	INS, SLVG-SHRINK
23	1	A4312	SW ASSY, TTC
24	5	MWC24/7/U0	WIRE, ELEC,INS
25	3	MWC24/7/U6	WIRE, ELEC,INS
26	12	MWC24/7/U97	WIRE, ELEC,INS
27	1	TM105-11AR	TERM. BD-FNG
28	1	CK693	DIAG, SCHEM
29	1	NP362-48	PLATE, IDENT.
30	1	MC131-1	CPLG, SFT
31	1	CK1079	DIAG,INTCON

### IV. TOOLS SUPPLIED BY INSTALLING ACTIVITY:

1. 1/2" Electrical Drill
2. Soldering Iron
3. #2 Phillips Screw Driver
4. Volt Ohmmeter-Simpson 260 or equivalent

# TMC SPECIFICATION

NO. S 1000

REV:

COMPILED:

CHECKED:

APPD:

SHEET

4

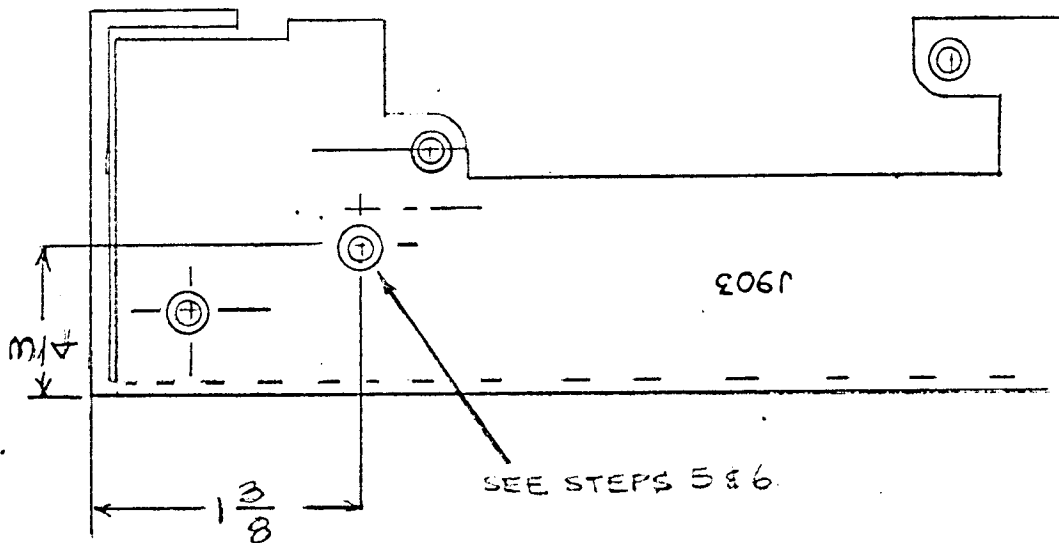
OF

8

TITLE: KIT-252 MODIFICATION OF TTR-10 TO TTR-11

DRILLING PLAN FOR POWER SUPPLY

FIGURE #1



# TMC SPECIFICATION

NO. S 1000

REV:

COMPILED:

CHECKED:

APPD:

SHEET

5

OF

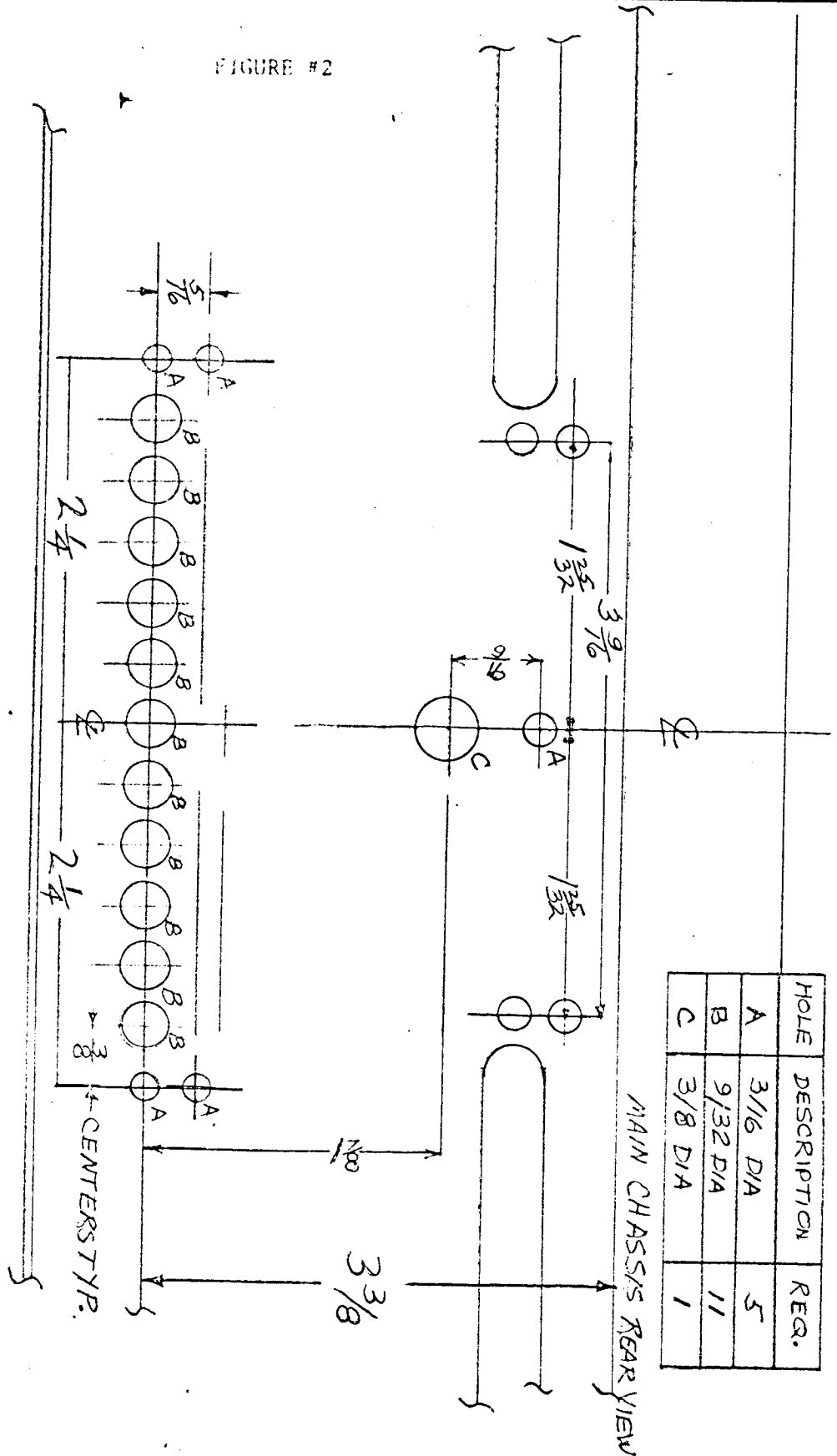
8

TITLE:

KIT-252 MODIFICATION OF TTR-10 TO TTR-11

## DRILLING PLAN FOR POWER SUPPLY

FIGURE #2



HOLE	DESCRIPTION	REQ.
A	3/16 DIA	5
B	9/32 DIA	11
C	3/8 DIA	1

# TMC SPECIFICATION

NO. S 1000

REV: 

COMPILED:

CHECKED:

APPD:

SHEET 6

OF 8

TITLE: KIT-252 MODIFICATION OF TTR-10 TO TTR-11

## V. INSTALLATION PROCEDURE:

### A. Power Supply :

1. Remove all Modules.
2. Remove Power Supply.
3. Remove Top & Bottom Covers.
4. Remove Bottom Cover of Power Supply.
5. Refer to Figure 1 for Power Supply. Drilling Plan.
6. Using ITEM #1, Drill 1/8" hole and countersink with ITEM #6 for ITEM #13 mounting.
7. Using ITEM #26, solder to one side of ITEM #13.
8. Using ITEM #25, solder to opposite side of ITEM #13.
9. Mount ITEM #13, with 1 each ITEMS #14, 15, 16, 17, 20 and 2 each ITEM #19.
10. Using loose end of ITEM #25 from ITEM #13 with ITEM #22, solder to PIN #2 of J903.
11. Using loose end of ITEM #26 from ITEM #13 solder to F902.
12. Replace bottom cover of Power Supply.
13. Do not install Power Supply at this time.

### B. Main Chassis :

14. Viewing main chassis from rear, modify as per drilling plan.  
FIGURE #2
15. Turn unit up side down.
16. Loosen boards A3278 and A3222.
17. Remove Hinge of A3222 from chassis.

(NOTE: Leave boards attached by cable only)

# TMC SPECIFICATION

NO. S 1000

REV: 

COMPILED:

CHECKED:

APPD:

SHEET 7

OF 8

TITLE:

KIT -252 MODIFICATION OF TTR-10 TO TTR-11

## V. INSTALLATION PROCEDURE - cont'd

18. Hold ITEM #23 with long end of shaft facing up. Turn long shaft of switch to extreme clockwise position.  
(NOTE: This puts switch in Channel #4 position)
19. Position Channel Selector on front panel to Position 4.
20. Slip 1 each ITEM #30, (coupling, SFT) on each shaft, leave loose.
21. Remove plate MS4113 from ITEM #23.
22. Mount ITEM #23 into A & C Holes as shown in Figure #2.
23. Set ITEM #30 so set screws lie on flat side of each shaft, then tighten. Rotate shaft from set position to tighten opposite side set screws.
24. Solder extended end of Blue lead from ITEM #23 to PIN 2 on J1500.
25. Replace A3278 and A3222.
26. Mount ITEM #7 with 4 each ITEMS #10, 11, 12 and 1 each ITEM #8, and 2 each ITEM #9.
27. Use 1 each ITEM #22 with steps 28 thru 34.
28. Solder two black leads to ITEM #20.
29. Solder loose ends of black lead to TERM. #6 of ITEM #7.
30. Solder WHITE lead of ITEM 7 to TERM. 7.
31. Solder RED lead of ITEM #7 to TERM. 8.
32. Solder GREEN lead of ITEM #7 to TERM. 9.
33. Solder YELLOW lead of ITEM #7 to TERM. 10.
34. Solder BLUE lead of ITEM #7 to TERM. 11.
35. Replace top and bottom cover.
36. Replace Power Supply.

# TMC SPECIFICATION

NO. S 1000

REV:

①

COMPILED:

CHECKED:

APPD:

SHEET

8

OF

8

TITLE:

KIT-252 MODIFICATION OF TTR-10 TO TTR-11.

V. INSTALLATION PROCEDURE - cont'd

37. Replace Plug-in Modules.

38. Mount ITEM #29 to any convenient place on the front panel.



