


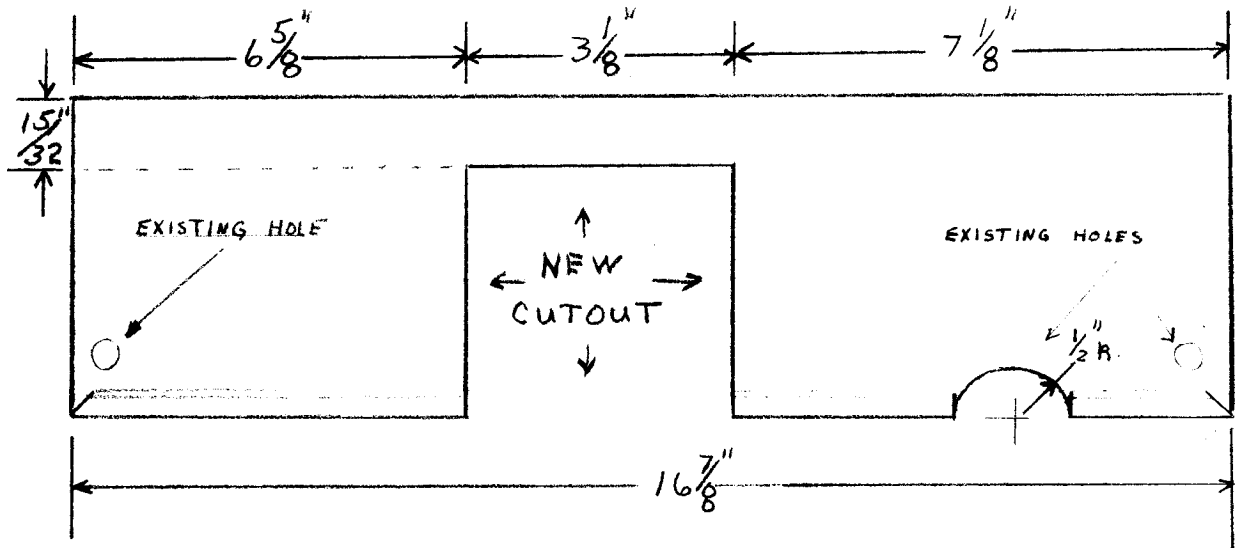
DATE _____		TMC SPECIFICATION NO. S 921	B
SHEET <u>1</u> OF <u>7</u>			
PREPARED COMPILED	CHECKED	TITLE:	
 APPROVED			

KIT-215

AUTOMATIC CHANGEOVER FROM EXTERNAL I MC. STANDARD
 TO INTERNAL I MC. STANDARD
 KIT - 215

DATE _____		TMC SPECIFICATION NO. S 921	B
SHEET <u>7</u> OF <u>7</u>			
<i>Lynn</i> COMPILED	CHECKED	TITLE: AUTOMATIC CHANGEOVER FROM EXTERNAL 1 MC STANDARD TO INTERNAL 1 MC STANDARD (TMC NO. KIT-215).	
<i>[Signature]</i> APPROVED			

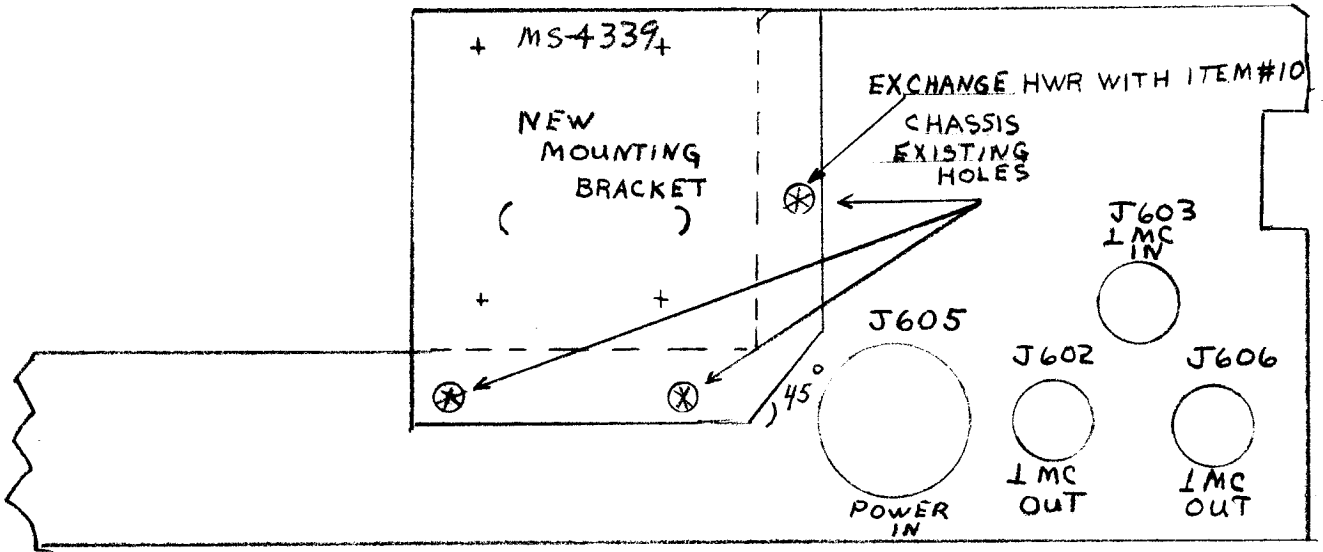
FIGURE #5



REAR VIEW OF TOP COVER (CSS-1A)

DATE _____		TMC SPECIFICATION NO. S	921	B
SHEET <u>0</u> OF <u>7</u>				
<i>LMM</i> COMPILED	CHECKED	TITLE: AUTOMATIC CHANGEOVER FROM EXTERNAL 1 MC STANDARD TO INTERNAL 1 MC STANDARD (TMC NO. KIT-215).		
<i>OB</i> APPROVED				

FIGURE #4



REAR VIEW OF CSS-1A CHASSIS

[Signature]
 COMPILED

CHECKED

TITLE: AUTOMATIC CHANGEOVER FROM EXTERNAL 1 MC STANDARD

[Signature]
 APPROVED

TO INTERNAL 1 MC STANDARD (TMC NO. KIT - 215).

FIGURE # 2 (BOTTOM VIEW)

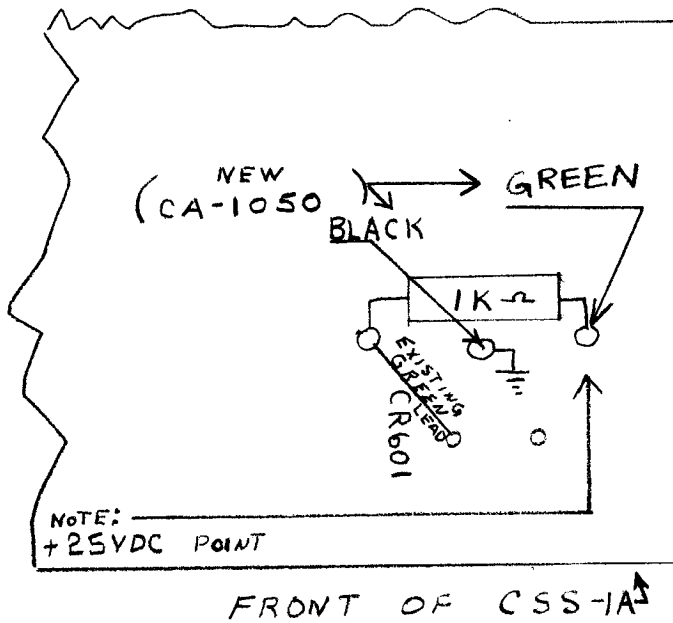
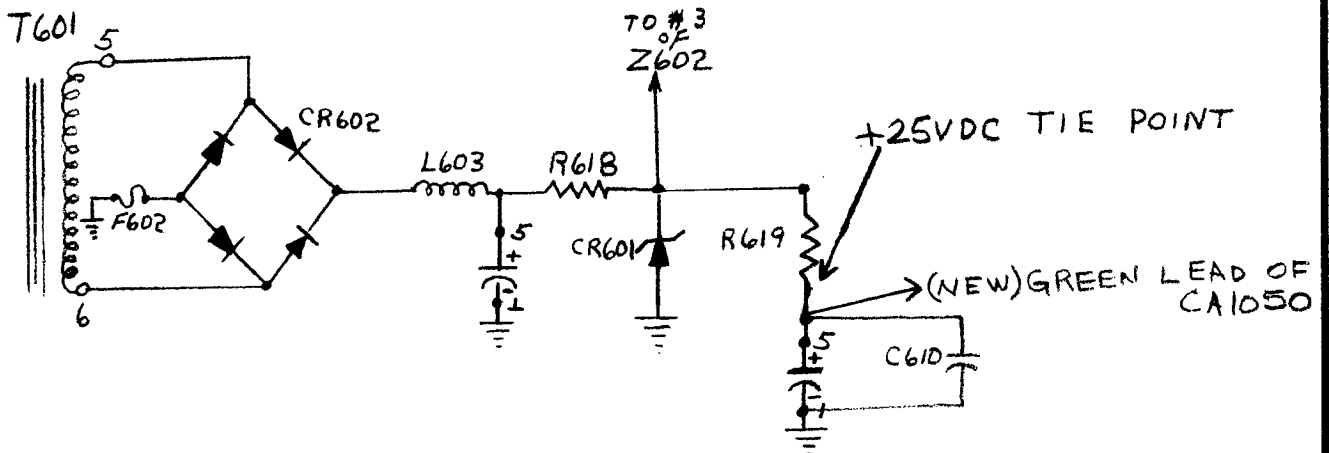
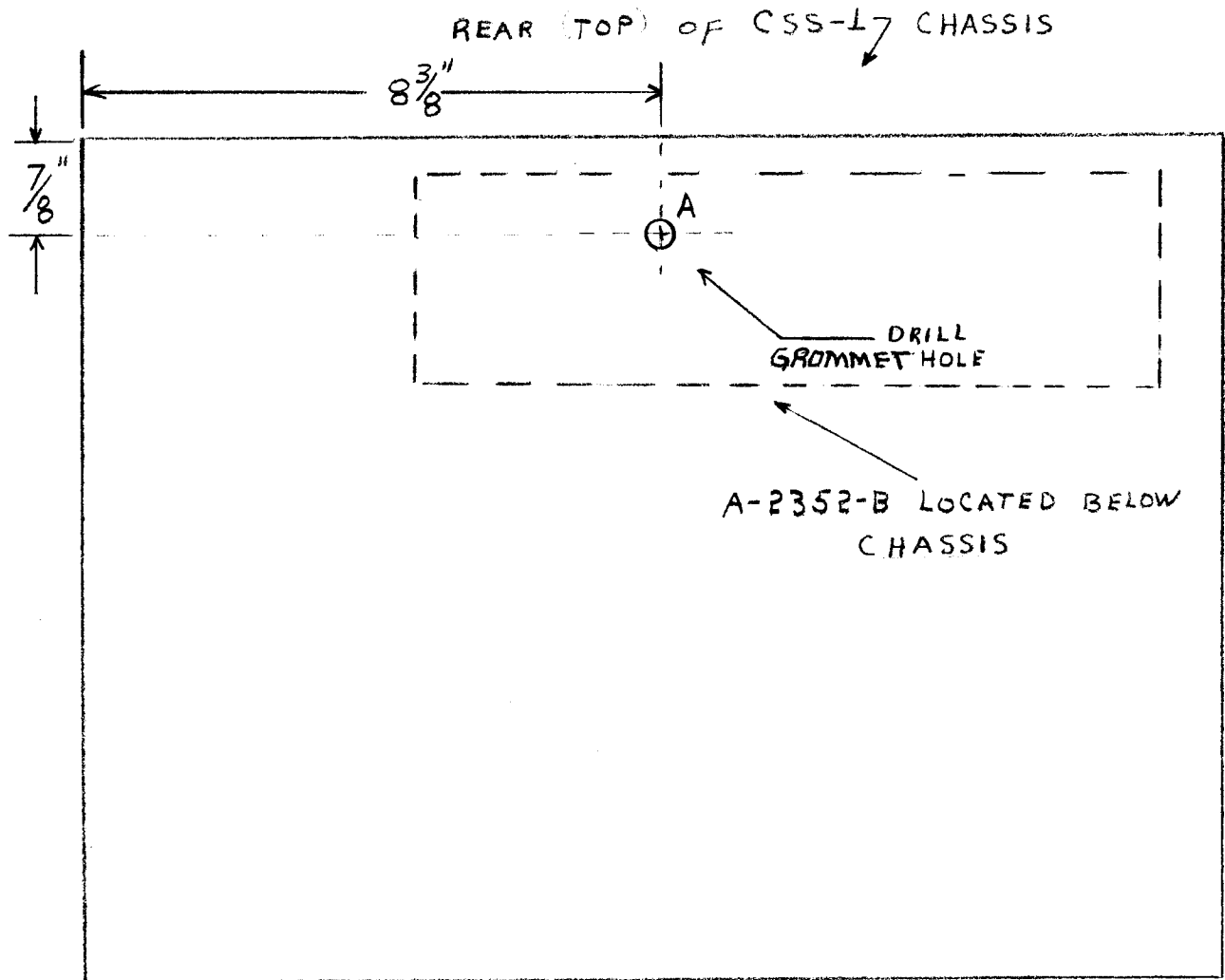


FIGURE # 3



DATE _____		TMC SPECIFICATION NO. S 921	B
SHEET <u>4</u> OF <u>7</u>			
<i>Lynn</i> COMPILED	CHECKED	TITLE: AUTOMATIC CHANGEOVER FROM EXTERNAL 1 MC STANDARD TO INTERNAL 1 MC STANDARD (TMC NO. KIT - 215).	
APPROVED			

FIGURE # 1



HOLES
A - 5/16" DIA.

DATE _____

SHEET 3 OF 7**TMC SPECIFICATION NO. S**

921

B*LMM*
COMPILED

CHECKED

TITLE: AUTOMATIC CHANGEOVER FROM EXTERNAL 1 MC STANDARD

OS
APPROVED

TO INTERNAL 1 MC STANDARD (TMC NO. KIT-215).

10. Using the existing holes and hardware, mount item #2 supplied in kit, in the location shown on Figure #4. NOTE: The 45° angle on the mtg. plate clears J-605 for proper orientation of the plate. (note screw exchange)
11. Install item #3 in center hole of mtg. plate just installed in Step #10.
12. Attach the green wire of item #4 to the (+28VDC) point located on Figure #2 and the black (ground) wire of Item #4 to the ground point located on Figure #2. Solder these connections.
13. Route Item #4 just installed in step #12 to rear of chassis and along existing cable run; up through grommet hole drilled in Step #8 and then thru grommet hole of item #2.
NOTE: There now should be a green & black wire protruding from the rear of MS-4339.
14. Remount the terminal board marked "A-2352-B" with the four #6 machine screws removed in Step #6, in its original location.
NOTE: Carefully check that no pinched wiring occurs during reinstallation of Term. Board.
15. Connect and solder the remaining wires of CA-1050 item #4, to item #1, supplied in kit as follows:
 - a) green wire to 24 volt Terminal of AX-546 (located inside unit).
 - b) black wire to the ground lug of AX-546 (located inside unit).
16. Mount Item #1 on Item #2 with item #7 and items #8.
NOTE: The 3 BNC connectors of the AX-546 must be located in a horizontal plane nearest the bottom, rear, of the CSS-1 or 1A.
17. Replace bottom cover on the CSS-1 or 1A.
18. Cut out the rear section of the Top cover to accommodate the newly installed unit; refer to Figure #5.
19. Replace Top cover of CSS-1 or 1A.
20. Replace CSS-1 or 1A in Sideband Frame and reconnect Power Plug to J-605.
21. Reconnect the BNC connectors at the rear of the unit as follows:
 - a) RG-174/u plug that originally connected to EXT. 1 MC STD on CSS-1 or 1A, now connects to EXT. STD. IN of AX-546.
 - b) RG-174/u plug that originally connected to 1 MC out of CSS-1 or 1A, now connects to 1 MC out of AX-546.
 - c) Connect one end of item #6, supplied in kit to J-602, (1 MC out) located on rear of CSS-1 or 1A and connect the other end of item #6 to INTERNAL STD. IN of AX-546.
22. Place the CSS-1 or 1A front panel STANDBY/ON switch to ON.
23. This completes TMC NO. KIT-215 modification of your CSS-1 or 1A unit.
24. Apply item #01 directly below name plate of CSS-1 or 1A.

DATE _____		TMC SPECIFICATION NO. S 921	B
SHEET <u>2</u> OF <u>7</u>			
<i>[Signature]</i> COMPILED	CHECKED	TITLE: AUTOMATIC CHANGEOVER FROM EXTERNAL I MC STANDARD TO INTERNAL I MC. STANDARD (TMC NO. KIT - 215)	
<i>[Signature]</i> APPROVED			

I. EQUIPMENT AFFECTED:

A. TMC MODEL CSS-1 and CSS-1A, PRIMARY FREQUENCY STANDARD.

II. PURPOSE:

A. Modification of SBG-() Sideband Generator to provide automatic changeover upon loss of external frequency standard input.

III. MATERIALS UPPLIES IN KIT:

<u>ITEM NO.</u>	<u>AMOUNT.</u>	<u>DESCRIPTION</u>
01	one ea.	TMC NO. NP-362-26, Name Plate
	one ea.	TMC NO. AX-546, IMC switching unit
2	one ea.	TMC NO. MS-4339, MTG. Plate for AX-546
3	two ea.	TMC NO. EY-102-2 grommet.
4	one ea.	TMC NO. CA- 1050 ,power cable
5	one ea.	5/16" Drill Bit
6	one ea.	TMC NO. CA-480- 312 , interconnecting coaxial cable
7	four ea.	TMC NO. SCBP0632BN5, Screw, mach. for MS-4339
8	four ea.	TMC NO. LWE06MRV washer, Lock, for MS-4339
9	3 feet	TMC NO. CD-101-1-MW, Lacing cord.
10	one ea.	TMC NO. SCFP0632BN5, SCREW, MACH.

IV. TOOLS REQUIRED:

TO BE SUPPLIED BY THE INSTALLING ACTIVITY.

1. Soldering iron, medium and 1 foot solder.
2. Pliers, 6" Longnose
3. Pliers, 6" Diagonal
4. Screwdriver 6" Phillips
5. Tin-snips - 12"

PROCEDURE:

1. Turn CSS-1 or 1A front panel STANDBY/ON switch to STANDBY.
2. Disconnect power plug, J-605, from rear of unit.
3. Disconnect all coaxial connecting cables from rear of unit.
4. Remove the CSS-1 or 1A from SideBand Frame, to a convenient working area.
5. Remove Top and Bottom Covers from CSS-1 or 1A.
6. Remove the four #6 Phillip's Machine Screws that hold the marked A-2352-3, terminal board, from the top of the chassis.
7. Carefully push back the terminal board from the chassis.
8. Mark, and carefully drill a hole from the top of the CSS-1 or 1A chassis. with item #5 supplied in kit, as per Figure #1.
9. Insert Item #3 supplied in kit, in hole drilled in Step #8.