

DATE 9-30-64

SHEET 1 OF 6

TMC SPECIFICATION NO. S868

TOM MEEHAN
COMPILED

J.E.
CHECKED

TITLE: CONNECTOR WIRING

H. E. Eaton
APPROVED

PROCEDURE

RAK-102-2
CONNECTOR WIRING
PROCEDURE

DATE 9-30-64

SHEET 2 OF 6

TMC SPECIFICATION NO. S868

TOM MERRIN
COMPILED

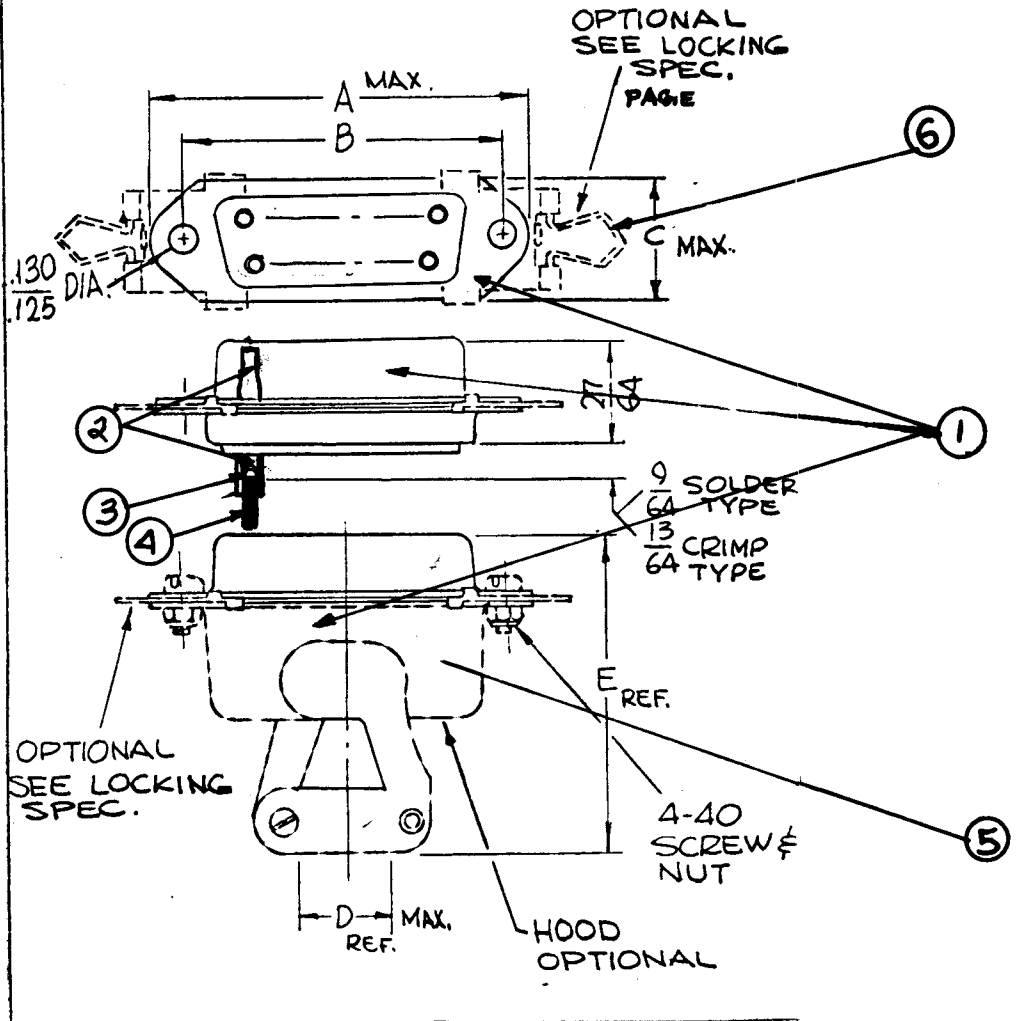
CHECKED

TITLE:

CONNECTOR WIRING

J. C. Eaton
APPROVED

PROCEDURE



NOTE 1:
USE SLEEVING
ITEM #3 FOR
CONNECTIONS TO
ALL CONTACTS

SEE NOTE 2
SEE NOTE 5

NOTE 2: HO 100 (HOOD)
COMMON TO BOTH JJ 310 &
JJ 313 CONNECTORS.

ITEM NO.	PART NUMBER	DESCRIPTION
1	JJ 310-X	CONN, RECPT, FEMALE - 1/2
2	PIN	CONTACT
3	PX830-14-1	INS SLVG, SHRINK-BLK
4	WIRE	WIRE
5	HO 100-X	HOOD
6	FS 125	RET. CONN (P34 + 6)

DATE 9-30-64
 SHEET 3 OF 6

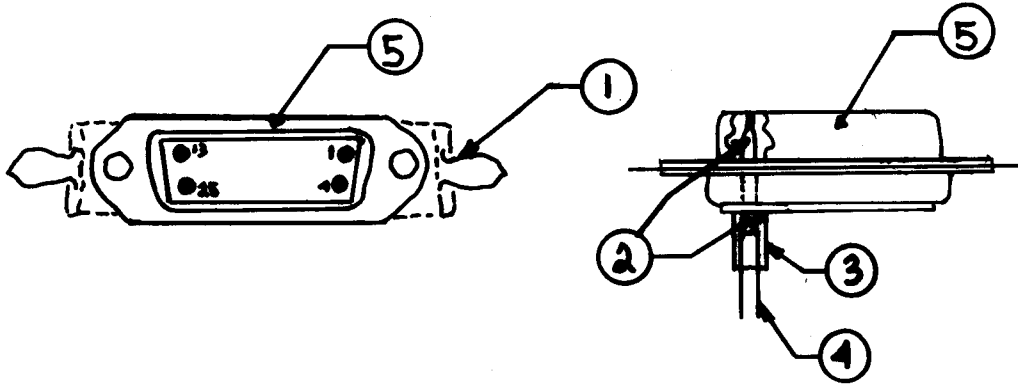
TMC SPECIFICATION NO. 5868

TOM MEEHAN
 COMPILED CHECKED

TITLE: CONNECTOR WIRING

J. E. Eaton
 APPROVED

PROCEDURE



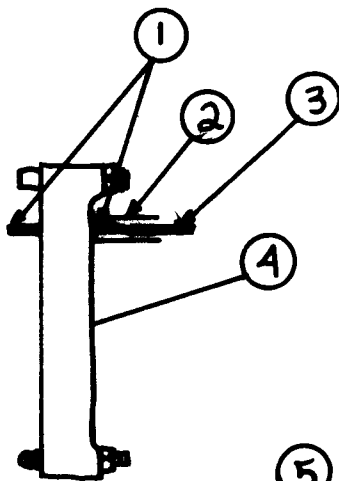
NOTE:
 USE SLEEVING (ITEM #3)
 FOR CONNECTIONS TO ALL
 CONTACTS.

SEE NOTE 1

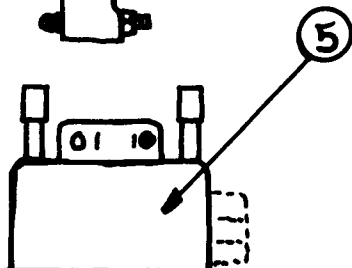
NOTE 2. FOR HOOD DETAIL
 SEE PG. 2 of 6

SEE NOTE 2

ITEM NO.	PART NUMBER	DESCRIPTION
1	FS125	RET., CONN (Pg 4 of 6)
2	PIN	CONTACT
3	PX830-M-1	INS SLVG, SHRINK-BLK
4	WIRE	WIRE
5	JJ313-XX	CONN, RECPT, MALE-X/C
6	HO100	HOOD



SEE NOTE 1



1	PIN	CONTACT
2	PX830-M-1	INSULATION SLVG, SHRINK-BLK
3	WIRE	WIRE
4	PL247-1	CONN, PL, ML-11/C
5	P/6 PL247-1	HOOD

DATE 9-30-64

SHEET 4 OF 6

TMC SPECIFICATION NO. S868

TOM MEEHAN
COMPILED

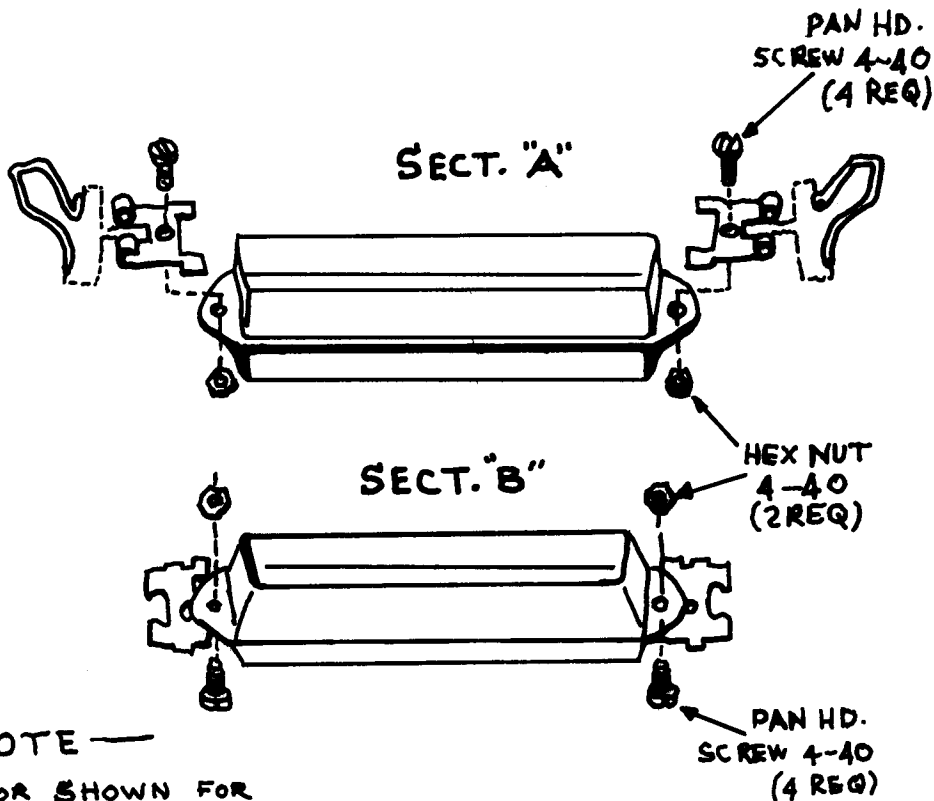
CHECKED

TITLE:

CONNECTOR WIRING

F. E. Eaton
APPROVED

PROCEDURE



— NOTE —
CONNECTOR SHOWN FOR
ASSEMBLY REFERENCE ONLY.

FS 125-1 (LOCKING SPRING)

SECTION "A" TO BE ASSEMBLED ON THE LINE, (MAY BE EITHER MALE OR FEMALE).

SECTION "B" TO BE ASSEMBLED BY CABLE DEPARTMENT, (MAY BE EITHER MALE OR FEMALE).

NOTE: THIS LOCKING UNIT (FS 125-1) IS USED WITH JJ 310 & JJ 313

DATE 9-30-64
SHEET 5 OF 6

TMC SPECIFICATION NO. S868

TOM MEDMAN
COMPILED

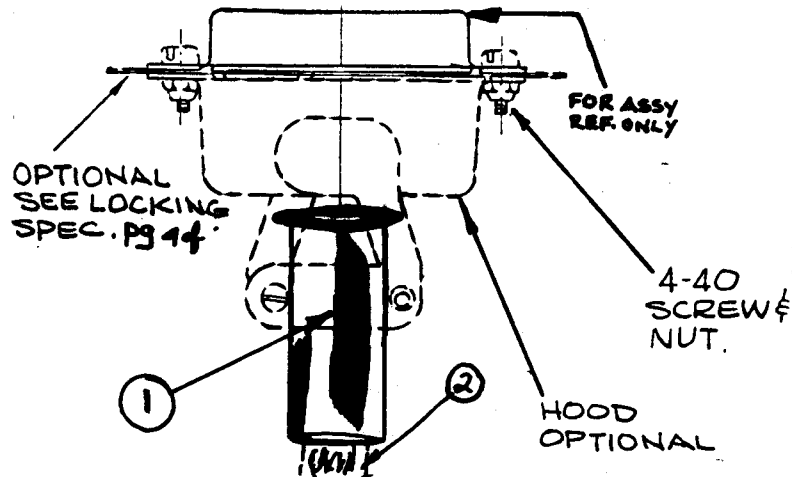
CHECKED

TITLE:

CONNECTOR WIRING

J. E. Eaton
APPROVED

PROCEDURE



ITEM #1 - MS3420-10, PLACE OVER END OF BRANCH AND
KEEP LIP OF BUSHING AGAINST INSIDE OF CLAMP.

ITEM #2 - WIRING HARNESS BRANCH

NOTE:

ITEM #1 IS USED ONLY FOR JJ310 & JJ313

DATE 9-30-64
 SHEET 6 OF 6

TMC SPECIFICATION NO. S868

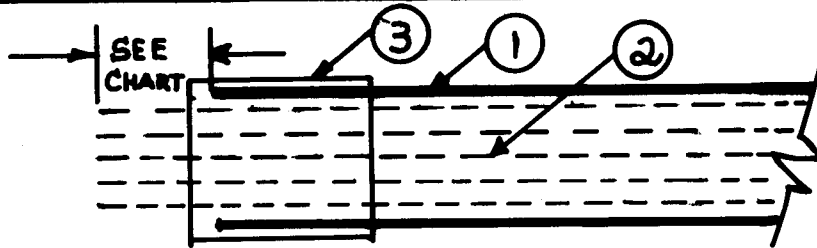
TOM MEEHAN
 COMPILED

CHECKED

TITLE: CONNECTOR WIRING

F. E. Eaton
 APPROVED

PROCEDURE



CHART

CONNECTOR PART NUMBER	NO. OF PINS	END PX100-1-XXX SLEEVING, XXX IN. FROM END OF WIRE.
JJ310-1*	15	$\frac{3}{4}$
JJ310-2*	25	1
JJ310-3*	37	$1\frac{1}{2}$
JJ310-4*	9	$\frac{1}{2}$
JJ313-1*	15	$\frac{3}{4}$
JJ313-2*	25	1
JJ313-3*	37	$1\frac{1}{2}$
JJ313-4*	9	$\frac{1}{2}$

*USE H WHEN HO100-1,2,3,4 HOOD IS USED!

NOTE:

PX100-1-XXX SLEEVING (ITEM ①) ON BRANCH ENDS ON HARNESSES, WITH JJ310-X* OR JJ313-X* CONNECTORS, XX PINS. WILL COME TO WITHIN (SEE CHART) OF WIRE ENDS (ITEM ②) AND BE TAPED WITH TA100-1 (ITEM ③) ELECTRICAL TAPE, $\frac{3}{4}$ INCH ON TO PX100-1-XXX AND $\frac{3}{8}$ INCH ON TO WIRE.

NOTE: ON JJ310-4 & JJ313-4 ONLY BRING TAPE OUT ON WIRE $\frac{1}{8}$ INCH.