

DATE 2/14/62

SHEET _____ OF _____

TMC SPECIFICATION NO. S -659

A

Qm

COMPILED

CHECKED

TITLE: TEST PROCEDURE FOR THE MODEL TER-5000-50

JB

APPROVED

INSTRUCTION FOR THE PRODUCTION TESTING
AND THE
MECHANICAL TESTING OF THE MODEL TER-5000-50

DATE 2/14/62
SHEET 1 OF 3

TMC SPECIFICATION NO. S -650

COMPILED

CHECKED

TITLE: TEST PROCEDURE FOR THE MODEL TER-5000-50

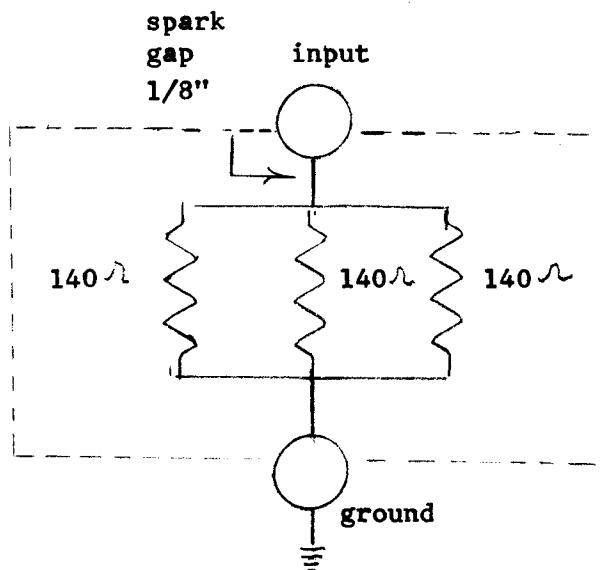
APPROVED

I. PURPOSE AND DESCRIPTION:

Models TER-5000 are resistive terminations capable of dissipating R.F. energy from DC TO 30 megacycles. The units are housed in fiberglass reinforced plastic cases for pole or frame mounting. The case provides protection from the elements and is fitted with screened vent ports for proper air circulation. All metals used are non-ferrous, insulation is of teflon and the entire assembly is protected by a silicone spray. The resistors are of a new design providing a minimum of reactance. The entire resistor assembly is shock mounted in a fiberglass case and may be quickly removed for service. The resistor characteristics are such that they may be instantly brought up to full rated output power at minus 40 degrees centigrade without harm.

II. TEST EQUIPMENT REQUIRED:

1. Ohmmeter: Simpson Model 260 or Equivalent
2. GPT-10K Transmitter.



DATE 2/14/62

SHEET 2 OF 3

TMC SPECIFICATION NO. S -659

A

COMPILED

CHECKED

TITLE: TEST PROCEDURE FOR THE MODEL TER-5000-50

APPROVED

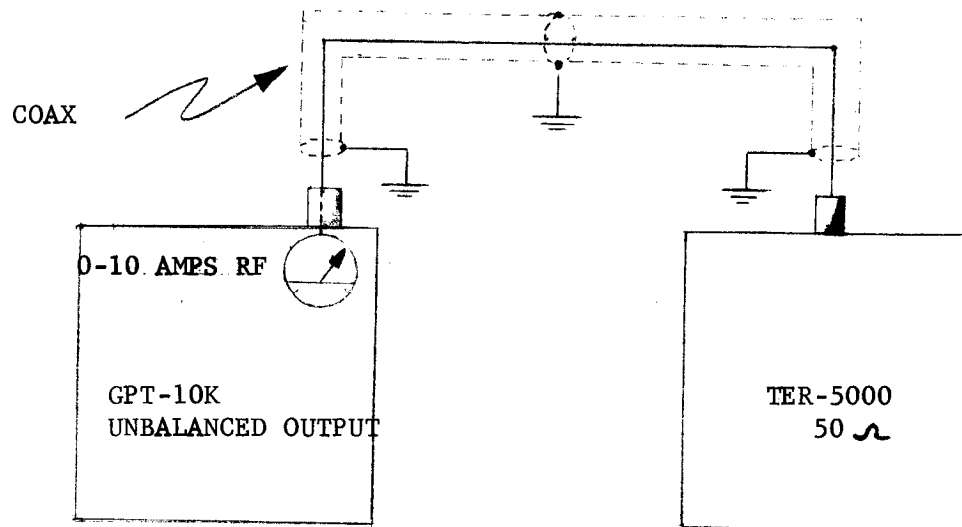
III. TEST INSTRUCTIONS:

A. Electrical and Mechanical Inspection.

1. Check resistance of the three resistors. The resistance should be + 5% of value stamped on resistor.
2. Check the spacing of the spark gap. This should be set for 1/8" spacing.
3. Inspect resistors for any sign of damage in installation.
4. Check all mechanical connections to see that they are secure.
5. Check over all unit for any missing hardware.

B. Power Test:

Connect the unit under test as Per sketch below. Operate at 12 MCS with 5Kw output from the GPT-10K transmitter for a period of 10 minutes. 5Kw is obtained with the GPT-10K at an RF output ammeter reading of 10 amps.



DATE 2/14/62
SHEET 3 OF 3

TMC SPECIFICATION NO. S-659

A

COMPILED

CHECKED

TITLE: TEST PROCEDURE FOR THE MODEL TER-5000-50

APPROVED

TEST DATA SHEET

TER-5000-50

SERIAL NUMBER _____ MFG NO. _____

1.0 MECHANICAL INSPECTION _____ OK

2.0 ELECTRICAL INSPECTION _____ OK

3.0 POWER TEST: 5Kw at 12 MCS for 10 Mins. _____ OK

DATE _____

TESTED BY _____

