

## TMC SPECIFICATION

NO. S-494

REV: A

COMPILED: T.G.

CHECKED:

APPD: ~~MM~~

SHEET 1 OF 4

TITLE: Production Testing Of FX-162 2 KC Low  
Pass Filter

## Testing Of Filter

1. Connect equipment as shown in figure 1.
2. No external load resistor is required (inside can).
3. Set generator frequency in the vicinity of 1500 KC.
4. Set the generator output for 1 volt across output of filter at this frequency.
5. Take readings and record in report sheet against the corresponding frequency the amount of attenuation that the signal has dropped from the reference point.

REV: A

COMPILED: T.G.

CHECKED:

APPD:

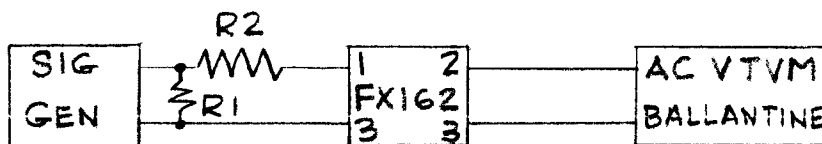
SHEET 2 OF 4

TITLE: Production Testing Of FX-162 2 KG Low  
Pass Filter

TEST EQUIPMENT REQUIRED

1. Signal Generator HP #200 CD.
2. AC VTVM Heath.

TEST SET UP



$R_1 = 600$  ohms  
 $R_2 = 1000$  ohms

FIG. 1

REV: A

COMPILED:

T.G.

CHECKED:

APPD:

SHEET

3

OF 4

TITLE:

Production Testing Of FX-162 2 KC Low

Pass Filter

## SCHEMATIC

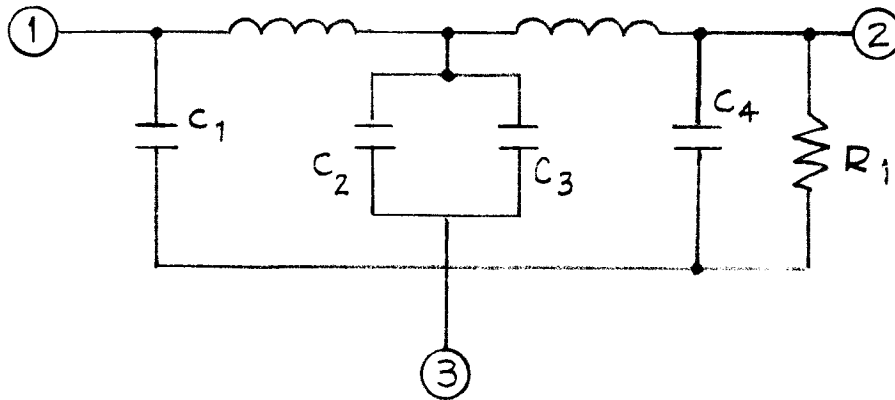


FIG. 2

 $R_1 = 1 \text{ K } 1/2 \text{ watt}$  $C_1 = .0735 \text{ uf}$  $C_2 = .117 \text{ uf}$  $C_3 = .0230 \text{ uf}$  $C_4 = .0735 \text{ uf}$

REV: A

COMPILED: T.G.

CHECKED:

APPD:

SHEET 4 OF 4

TITLE:

TEST REPORT

2 KC Low Pass Filter FX--162---

Frequency		DB	DB
.500 KC → 1700 KC		0	
2 KC	Max	-4	
4 KC	At Least	-30	
10 KC	At Least	-60	

DATE \_\_\_\_\_

TESTER \_\_\_\_\_

ACCEPT

REJECT

