

DATE 9-21-55
SH. 1 OF 9

TMC SPECIFICATION NO. S-272

COMPILED BY
WDC

TITLE: MODIFICATIONS FOR CANADIAN RCR SYSTEM JOB

APPROVED *WDC*

PAGE	UNIT	DRAWING NUMBER	LOCATION	CANADIAN NAMEPLATE NO.
2	RSA-2	MS-385	FR. PANEL	NP-10006
3	RSC-2	A-878	REAR OF CHASSIS	"
4	RSD-2	MS-377	FR. PANEL	"
5	RSF-2	A-506	REAR OF CHASSIS	"
6	RSM-2	MS-402	FR. PANEL	"
7	RSP-2	A-478	REAR OF CHASSIS	"
8	FFR-2	A-139	"	"
9	FFRD	A-318	"	"

DATE 9-21-55

SH. 2 OF 9

COMPILED BY
WDC

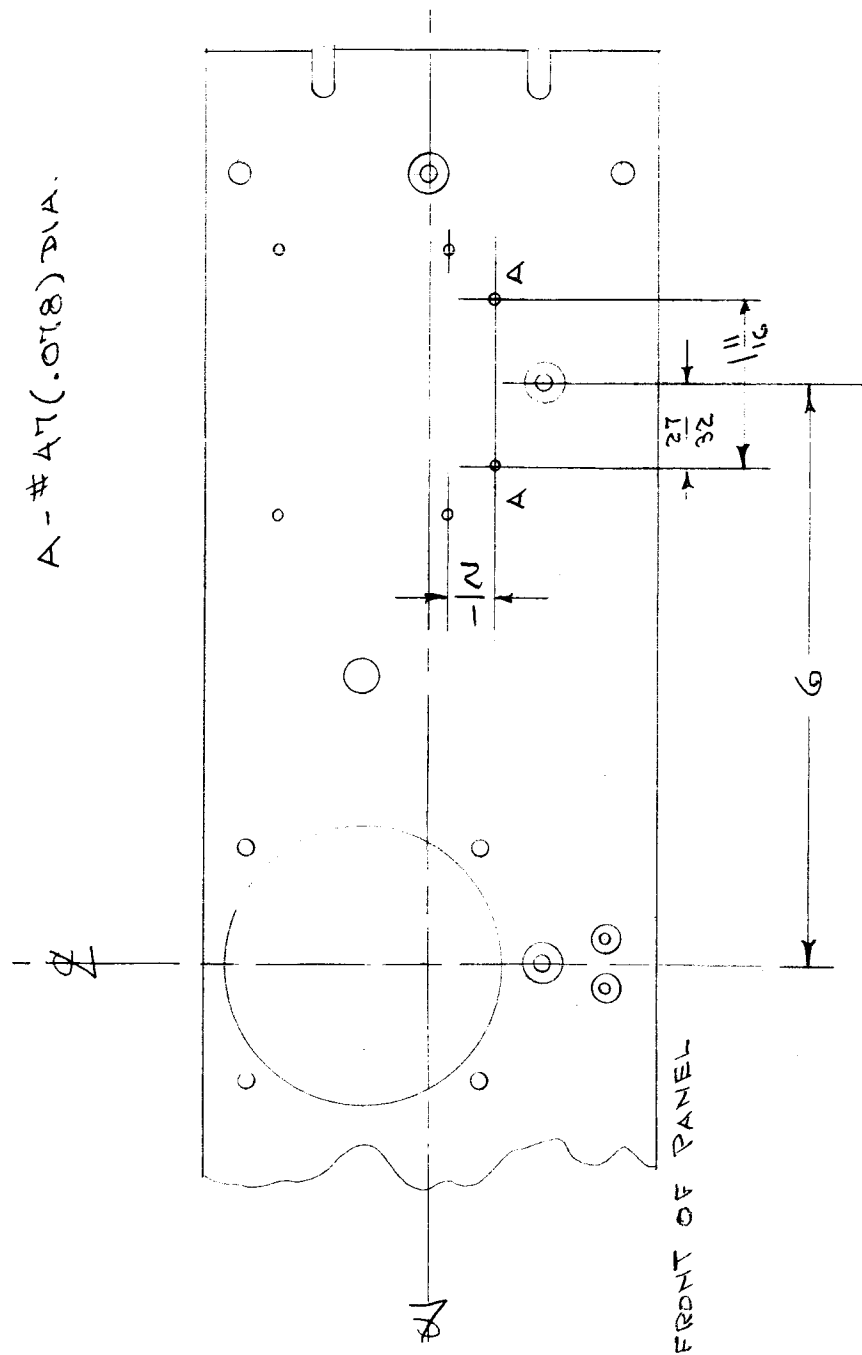
TMC SPECIFICATION NO. S-272

TITLE: MODIFICATIONS FOR CANADIAN RCR SYSTEM

JOB

APPROVED *WDC*

A - #47 (.018) DIA.



FRONT OF PANEL

MODIFY MS-385, FRONT PANEL OF RSA-2 AS ABOVE. (ADD 2 "A" HOLES.)

DATE 9-21-55

SH. 3 OF 9

COMPILED BY
WDC

TMC

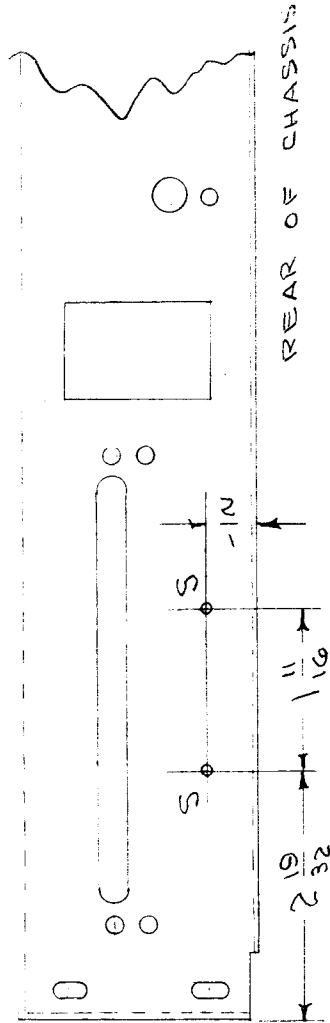
SPECIFICATION NO. S-272

TITLE: MODIFICATIONS FOR CANADIAN RCR SYSTEM

JOB

APPROVED

S-# A8(.076) DIA.



MODIFY A-878, CHASSIS ASSY. OF RSC-2
AS ABOVE. (ADD 2 "S" HOLES)

DATE 9-21-55

SH. 4 OF 9

COMPILED BY
W D C

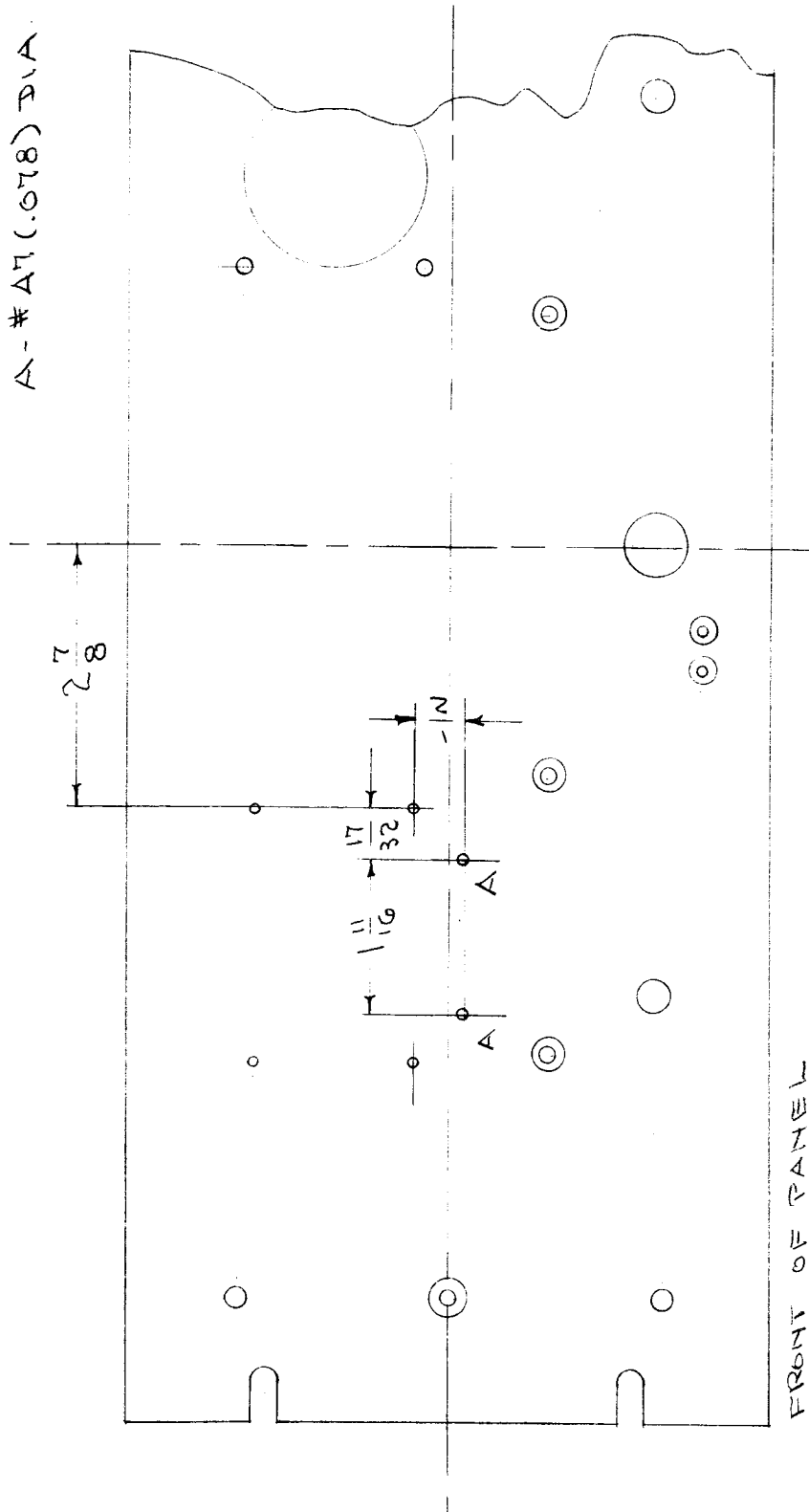
TMC SPECIFICATION NO. S-272

TITLE: MODIFICATIONS FOR CANADIAN RCR SYSTEM

JOB

APPROVED

A - # A7 (.078) DIA



FRONT OF PANEL

MODIFY MS-377, FRONT PANEL OF RSD-2 AS SHOWN ABOVE. (ADD 2 "A" HOLES).

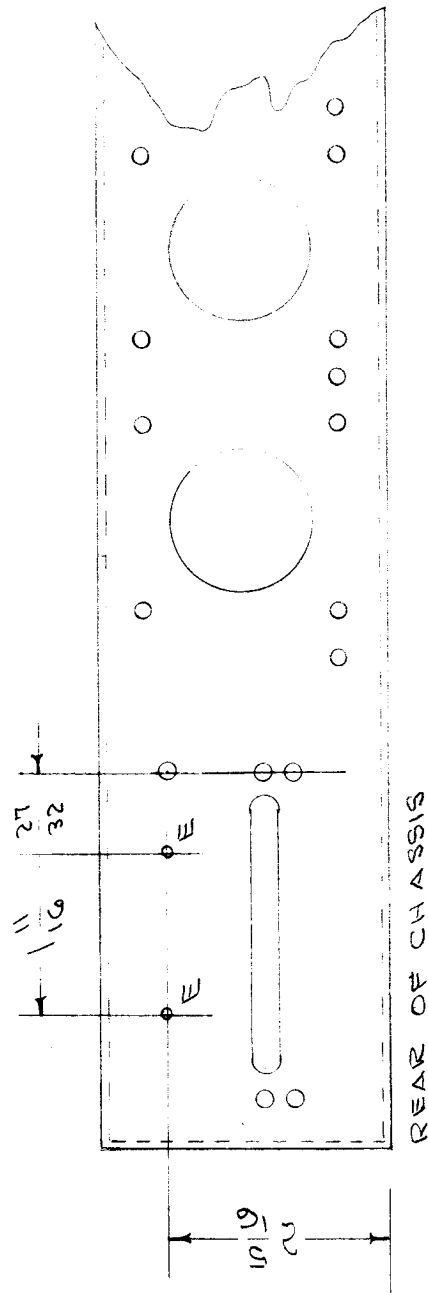
DATE 9-21-55
SH. 5 OF 9
COMPILED BY
W D C

TMC SPECIFICATION NO. S-272

TITLE: MODIFICATIONS FOR CANADIAN RCR SYSTEM JOB

APPROVED *WDC*

E - #48 (.016) DIA.



MODIFY A-506, CHASSIS ASSY. OF RSE-2
AS ABOVE. (ADD 2 "E" HOLES)

DATE 9-21-55

SH. 6 OF 9

COMPILED BY

W D C

TMC

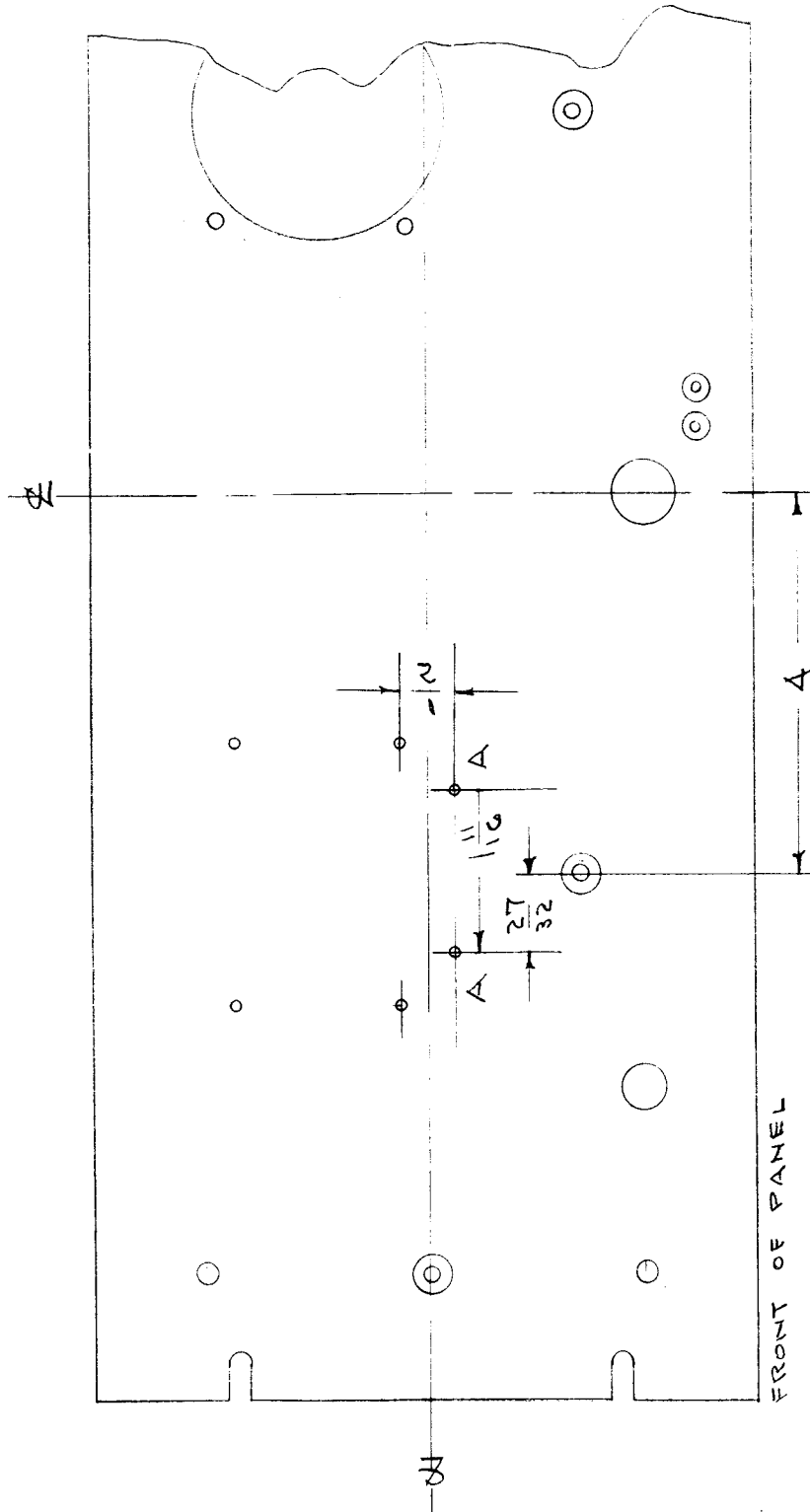
SPECIFICATION NO. S-272

TITLE: MODIFICATIONS FOR CANADIAN RCR SYSTEM

JOB

APPROVED *WDC*

A - # AT (.048) DIA.



MODIFY MS-402, FRONT PANEL OF RSM-2 AS ABOVE. (ADD 2 "A" HOLES)

DATE 9-21-55
SH. 7 OF 9

TMC

SPECIFICATION NO. S-272

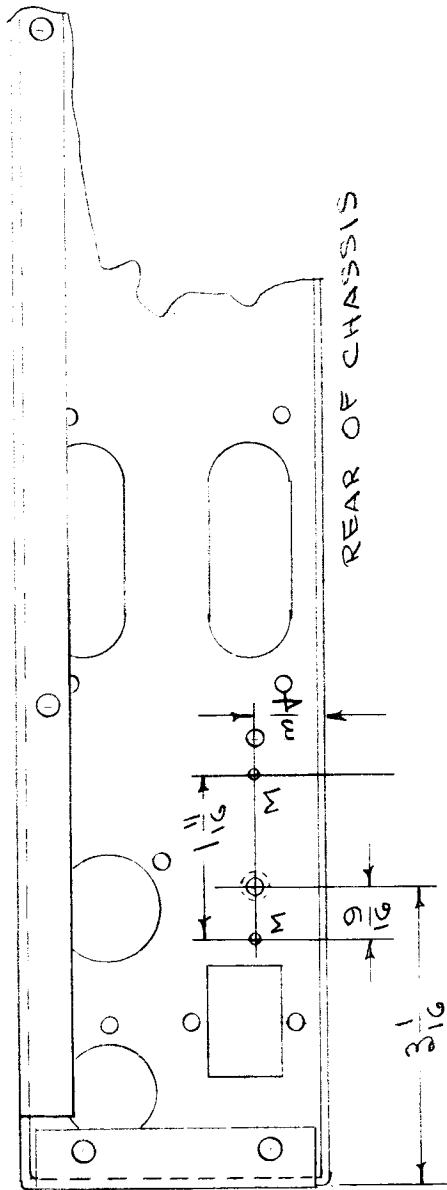
COMPILED BY
W D C

TITLE: MODIFICATIONS FOR CANADIAN RCR SYSTEM

JOB

APPROVED

M- #48(.076) DIA



MODIFY A-478, CHASSIS ASSY. OF RSP-2
AS ABOVE. (ADD 2 "M" HOLES)

DATE 9-21-55
SH. 8 OF 9

TMC SPECIFICATION NO. S-272

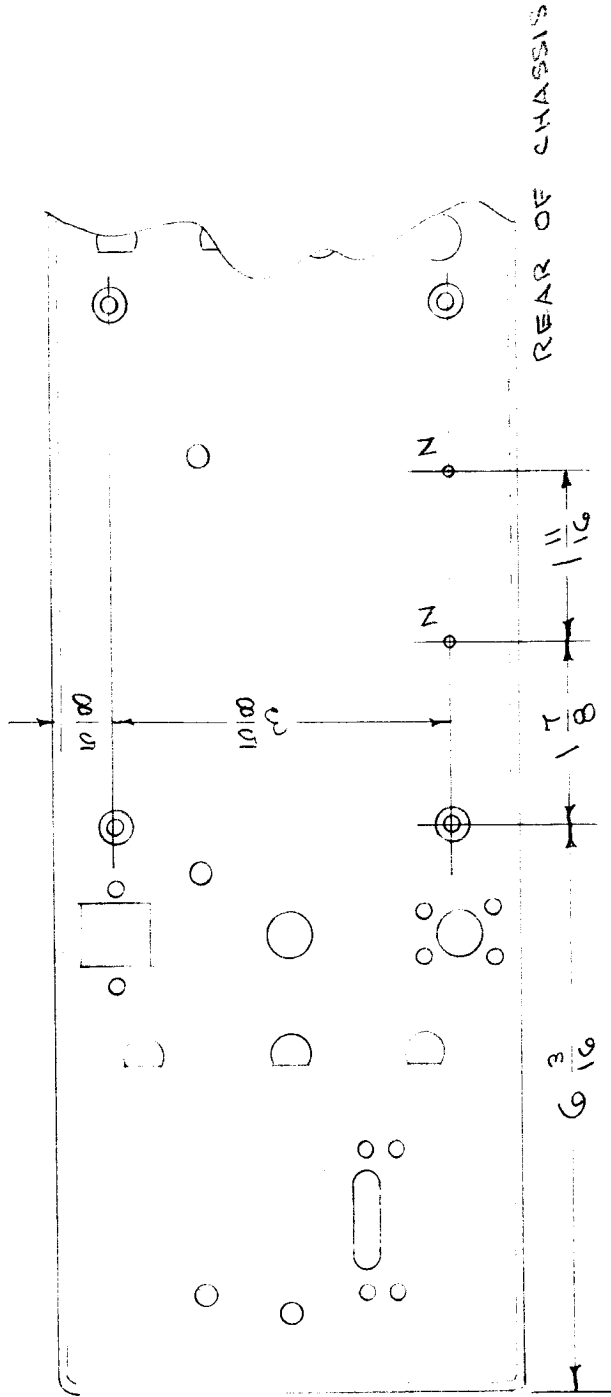
COMPILED BY
W D C

TITLE: MODIFICATIONS FOR CANADIAN RCR SYSTEM

JOB

APPROVED

N - #48 (.076) DIA.



*MODIFY A-139, CHASSIS FRAME ASSY. OF FER-2
AS ABOVE. (ADD 2 "N" HOLES)*

DATE 9-21-53

SH. 9 OF 9

COMPILED BY
W D C:

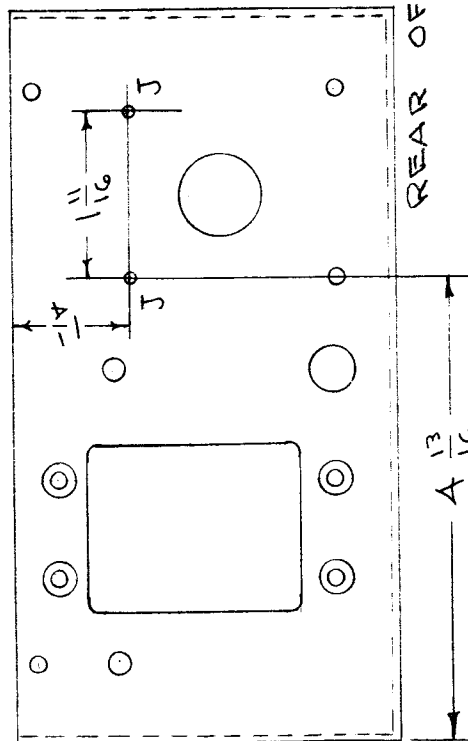
TMC SPECIFICATION NO. S-272

TITLE: MODIFICATIONS FOR CANADIAN RCR SYSTEM

JOB

APPROVED

K-#48 (.076) DIA.



MODIFY A-318, HEAD FRAME ASSY. OF FFD-
AS ABOVE. (ADD 2 "J" HOLES.