

TMC SPECIFICATION

NO. S 1202

REV: 0

COMPILED:

CHECKED:

APPD: *[Signature]*

SHEET

1

OF

6

TITLE:

KIT 341

Modification of
MSA-1

TMC SPECIFICATION

NO. S 1202

REV: 0

COMPILED:

CHECKED:

APPD: *W. May 6/30/67*

SHEET 2

OF 6

TITLE: *KIT 341*

I. EQUIPMENT AFFECTED:

A. T.M.C. MODEL MSA-1, RECEIVER

II. PURPOSE:

A. MUTING OF MSA-1 during transmission

NOTE: Not recommended for field modification

III. MATERIALS SUPPLIED IN KIT:

<u>ITEM #</u>	<u>AMOUNT</u>	<u>DESCRIPTION</u>
1	1	T.M.C. # NP-362-46 NAMEPLATE
2	1	A-4211-4
3	1	CA-1353 CABLE
4	3'	CD-101-1MW CORD, LACING
5	2	SCBPO632BN6 SCREW, MACHINE
6	2	SCFPO440BN5 SCREW, MACHINE
7	2	LWEO6MRN WASHER, LOCKING
8	2	LWEO4MRN WASHER, LOCKING
9	2	NTHO440BN4 NUT, HEX
10	1	11/64" DIA. DRILL BIT
11	1	9/64" DIA. DRILL BIT
12	1OZ	ACITONE
13	1	JJ-119-4

IV. TOOLS REQUIRED:

A. TO BE SUPPLIED BY THE INSTALLING ACTIVITY

1. SOLDERING IRON
2. PLIERS 6" LONGNOSE
3. PLIERS 6" DIAGONAL
4. SCREWDRIVERS 6" PHILLIPS
5. DRILL

TMC SPECIFICATION

NO. S 1202

REV: 0

COMPILED:

CHECKED:

APPD:

SHEET 3 OF 6

TITLE:

V. PROCEDURES:

1. Turn MSA-1 POWER SWITCH to stand-by.
2. Disconnect all connecting cables from rear of MSA-1.
3. Remove the MSA-1 from rack to convenient working area.
4. Remove top and bottom covers from MSA-1.
5. Drill two (2) 11/64" holes as shown in figure #1A for terminal board (A-4211-4).
6. Drill two (2) 9/64" holes as shown in figure #2B for connector (JJ-119-4).
7. Mount terminal board in 11/64" holes (A-4211-3), with CA-1353 attached.
8. Mount JJ-119-4 in 9/64" holes as shown in figure #2B, utilizing SCFPO440BN5, LWEO4MRN, and NTHO440BN4.
9. Dress leads of cable (CA-1353) to proper termination points as shown on figure #3 and solder all connections.
10. Lace cable (CA-1353) to main cable (CA-861) as shown on figure #1.
11. Remove the words "TEST TONE" and J-6529 with Acitone on rear panel of MSA-1.
12. Replace the top and bottom covers.
13. Place unit back in rack.
14. Re-connect all cables to rear of MSA-1.
15. Place MSA-1 POWER SWITCH to on position.
16. This complete T.M.C. KIT #- modification of your MSA-1.
17. Apply ITEM #1 directly below nameplate of MSA-1.

TMC SPECIFICATION

NO. S 1202

REV: \emptyset

COMPILED:

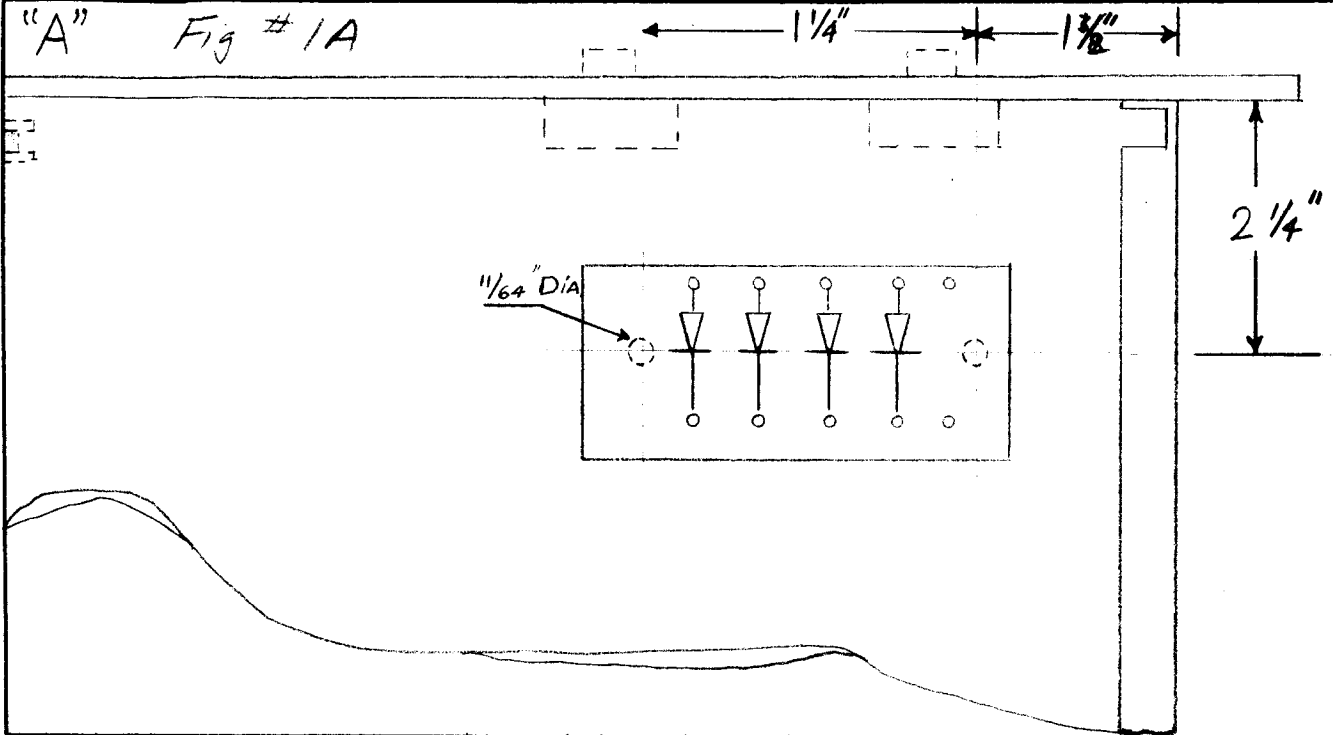
CHECKED:

APPD:

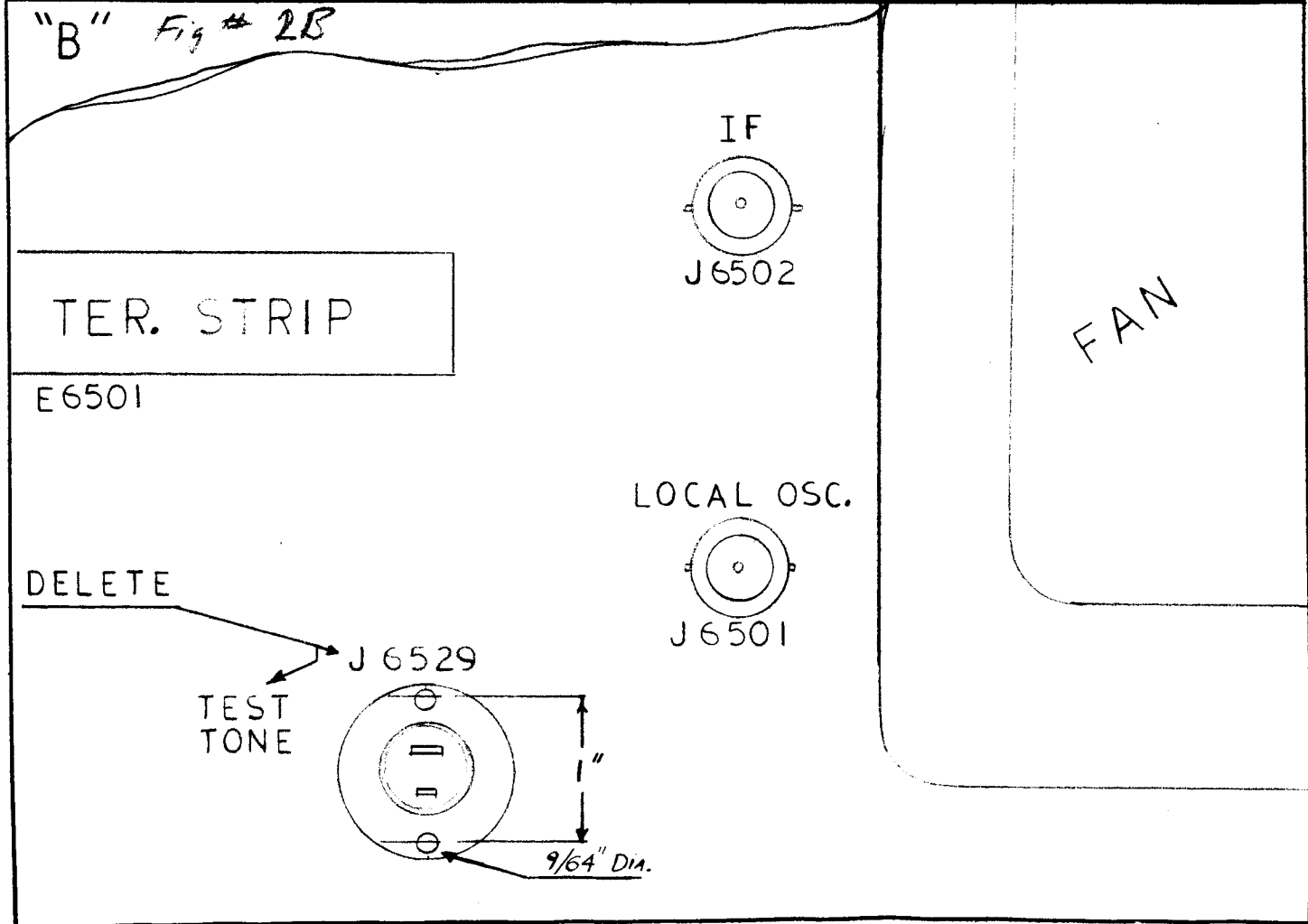
SHEET **A** OF **6**

TITLE:

"A" Fig # 1A



"B" Fig # 2B



TMC SPECIFICATION

NO. S 1202

REV: 0

COMPILED:

CHECKED:

APPD:

SHEET 5

OF 6

TITLE:

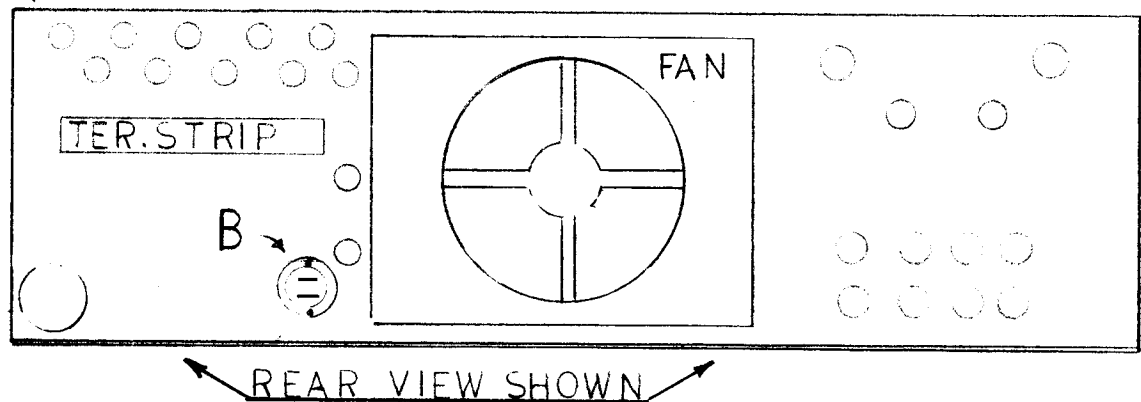
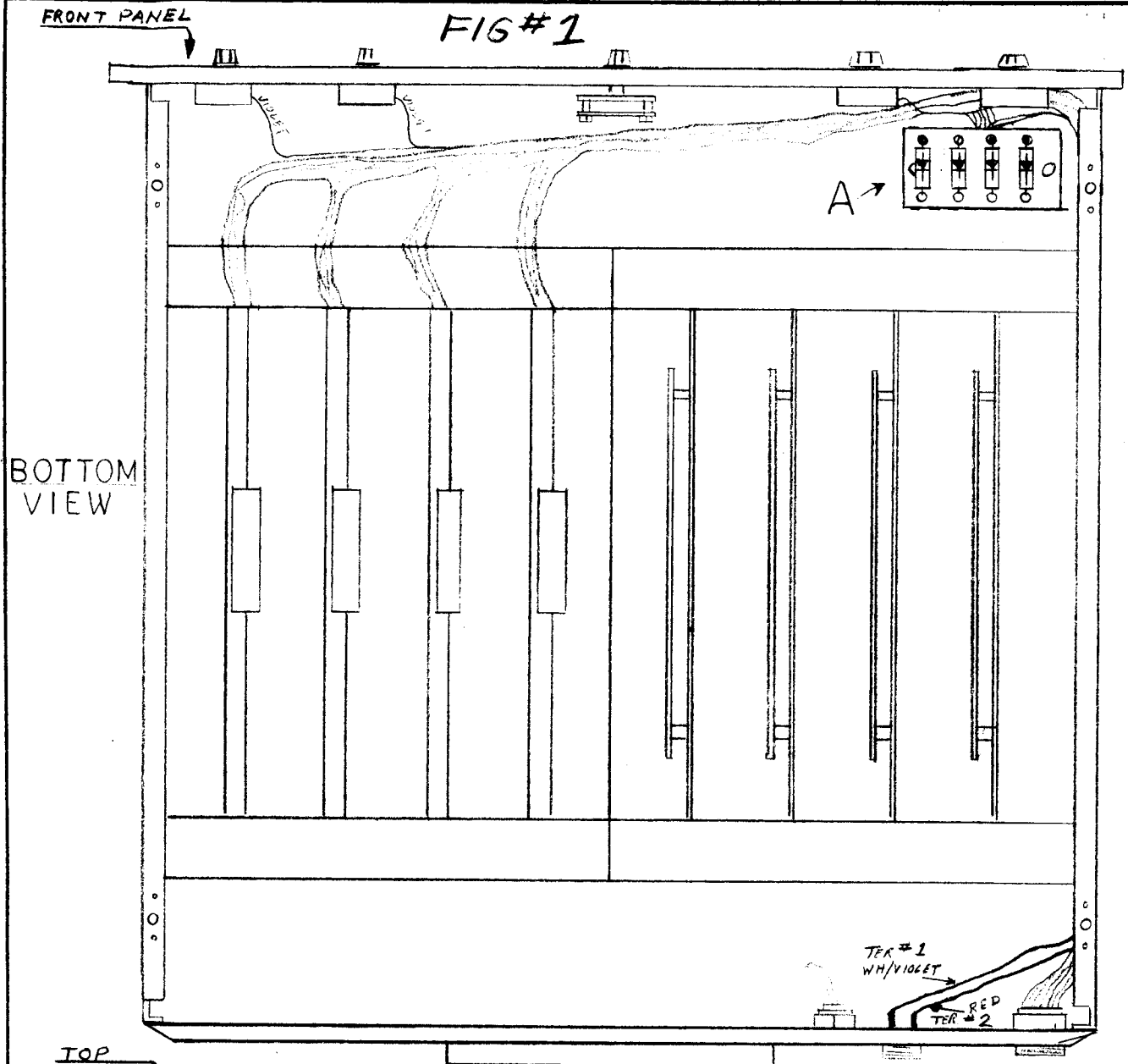


FIG #2

TMC SPECIFICATION

NO. S 1202

REV: 0

COMPILED:

CHECKED:

APPD:

SHEET 6 OF 6

TITLE:

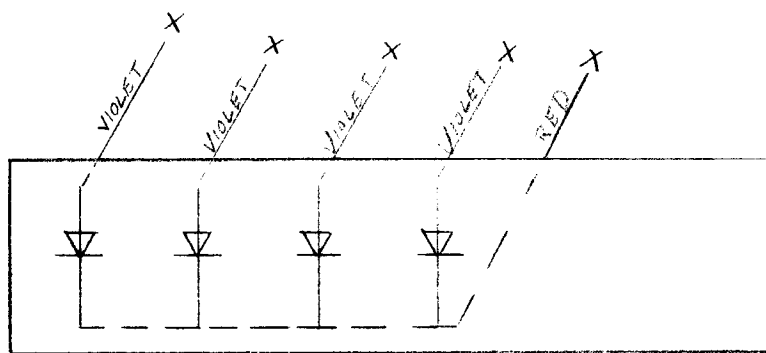
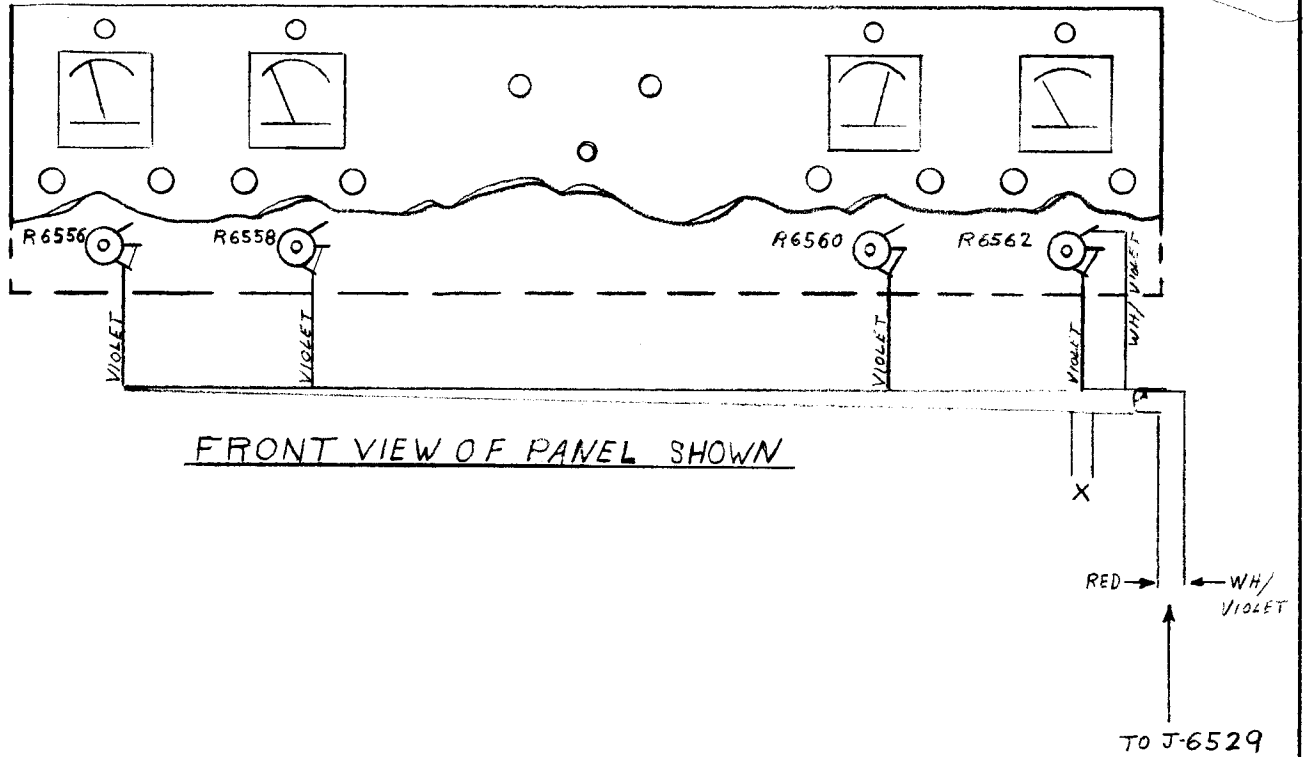


FIG. #3

