

TMC SPECIFICATION

NO. S 1056

REV: \emptyset

COMPILED: RRH

CHECKED:

APPD: 

SHEET 1 OF 5

TITLE:

Typed by mtp 12/22/65

KIT-280
SOLID STATE RECTIFIER
CONVERSION AMC6-2 AND AMC6-3

TMC SPECIFICATION

NO. S 1056

REV:

COMPILED:

RRH

CHECKED:

APPD:

SHEET 2 OF 5

TITLE: KIT-280 - SOLID STATE RECTIFIER - CONVERSION AMC6-2 AND AMC6-3

Typed by mtp 12/22/65

I. PURPOSE

To provide a field change kit for replacement 5U4G rectifier with solid state rectifier.

II. MATERIAL REQUIRED

<u>ITEM NO.</u>	<u>QTY.</u>	<u>TMC PART NO.</u>	<u>DESCRIPTION</u>	<u>SYMBOL</u>
1	1	1N1239	Full Wave Rectifier	CR101
2	1	RE70G4500	450 ohm, 15 watt resistor	R147
3	2	SCBP0440BN6	Screw, Machine	
4	2	LWEO4MRN	Washer, Lock	
5	2	NTH044OBN8	Nut, Hexagonal	
6	1	NP362-56	Modification, Nameplate	

III. TOOLS REQUIRED (furnished by customer)

1/8" drill

Soldering Iron

IV. MODIFICATION INSTRUCTIONS

1. Remove 5U4GB from its socket.
2. Remove wire from terminals 8 and 9 of T110 to terminals 2 and 8 of XV/// and L103.
3. Using Figure 1 as a guide, drill two 1/8" holes in the chassis between XV/// and L103.
4. Mount the 450 ohm resistor, Item 2, on the under side of the chassis with hardware (Items 3, 4, and 5).
5. Refer to Figure 2, and using wires salvaged from Step 2 above, connect one end of the 450 ohm resistor to terminal 8 of tube socket

TMC SPECIFICATION

NO. S 1056

REV: \emptyset

COMPILED: RRH

CHECKED:

APPD:

SHEET 3 OF 5

TITLE: KIT-280 - SOLID STATE RECTIFIER - CONVERSION AMC6-2 AND AMC6-3

Typed by mtp 12/22/65

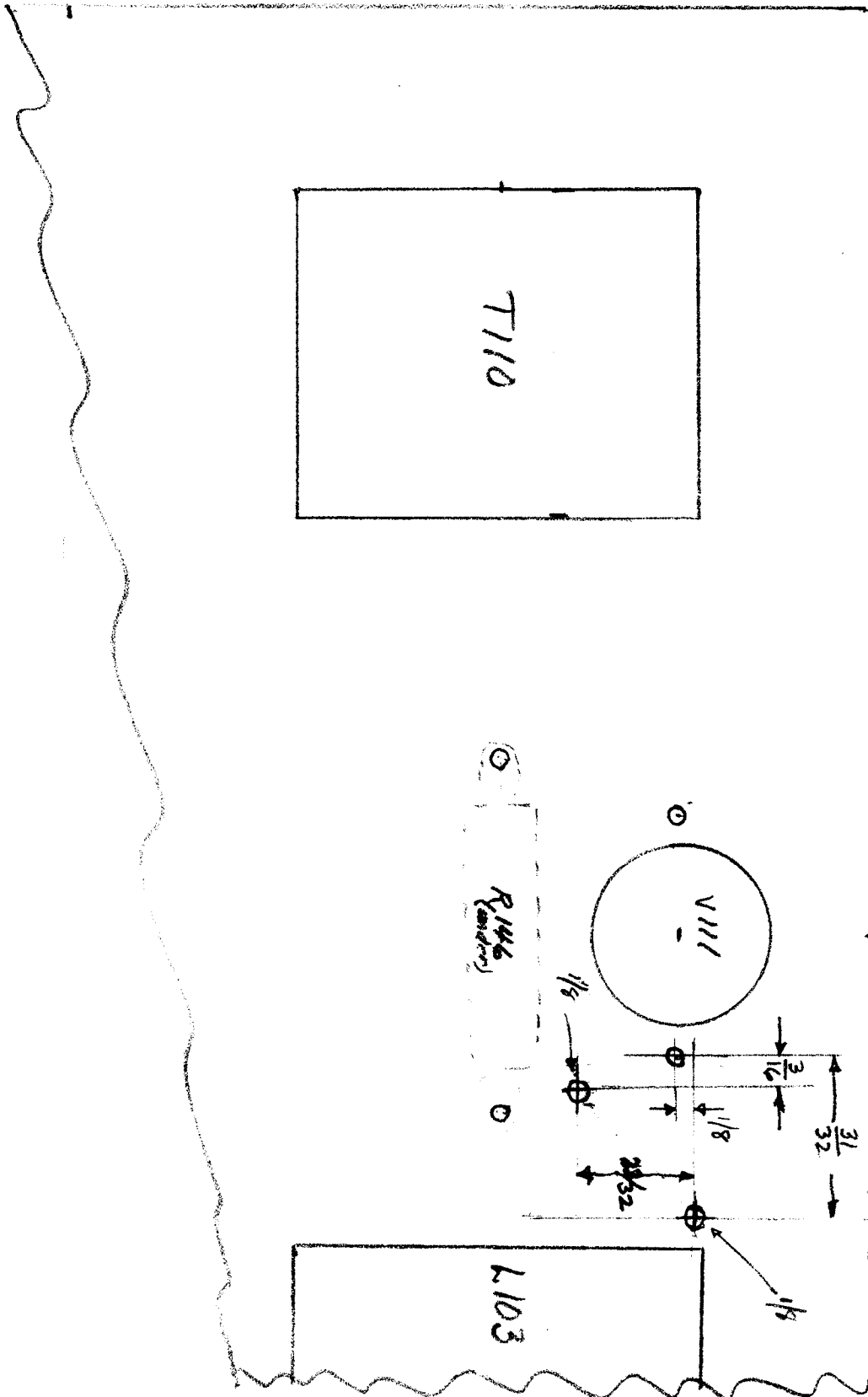
IV. MODIFICATION INSTRUCTIONS - Cont'd

XVIII. Connect the other end of the resistor to the terminal of L103 formerly connected to terminal 2 of XV/// and terminal 8 of T110.

6. Insert Full Wave Rectifier, ~~1N~~1239 (Item 1), in the socket formerly occupied by the 5U4GB.

7. Affix modification nameplate, NP362-56 (Item 6), to the rear apron of the AMC6. This completes the KIT-280 modification.

Figure 1



BY _____ DATE _____
CHKD. BY _____ DATE _____

SUBJECT KIT 280
SOLID STATE P/S
CONVERSION AM6-2, AM6-3

SHEET NO. 5 OF 5
JOB NO. _____

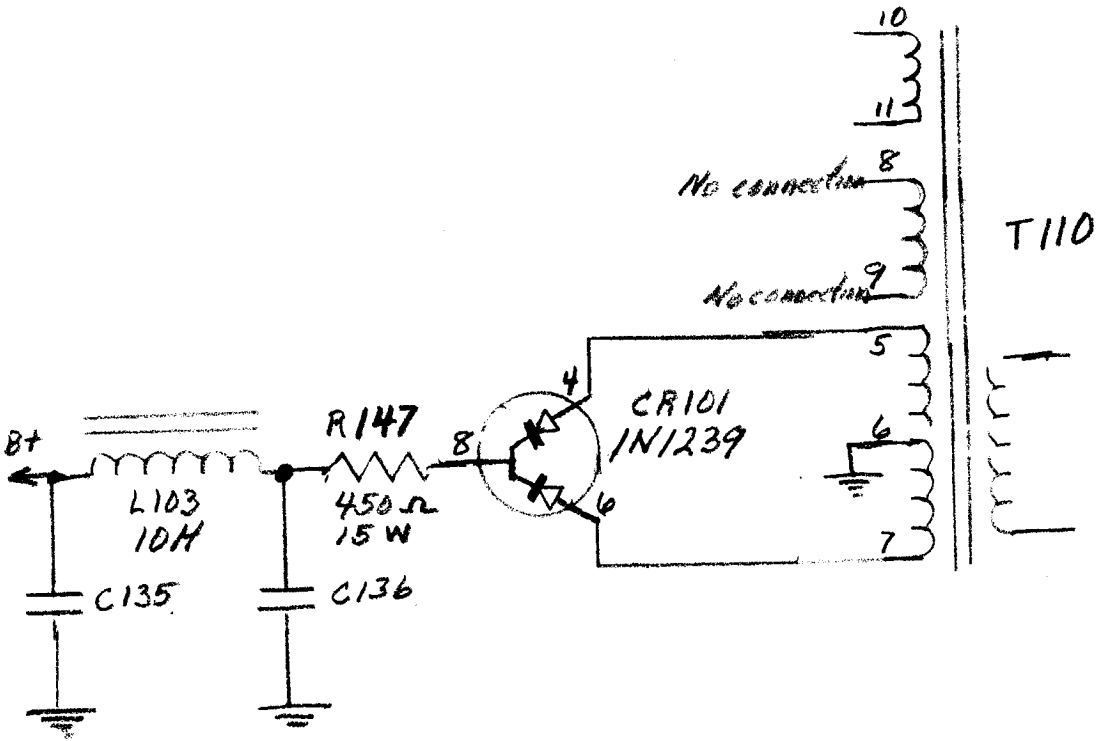


Figure 2