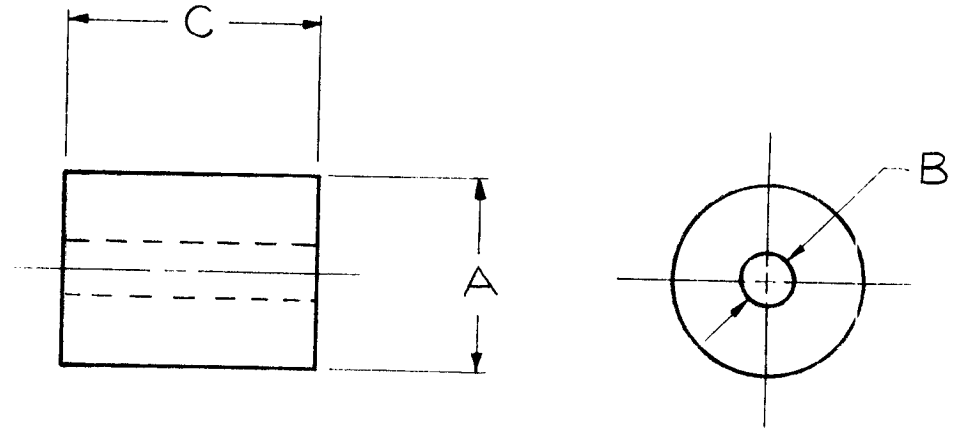


REQ. PER UNIT	USED ON			RY-129
	MODEL	ASS'Y. NO.	DATE	
18	GPR		2-5-59	

TMC PART NO.	MFG. PART NO.	A	B	C
RY129-1	R 271	7/16	3/32	5/16
-2	R 272 *	43/64	3/16	5/8
-3	R 273	1/2	3/32	3/8
-4	R 274	15/32	3/32	15/32
-5	R 275	5/16	1/8	1/2
-6	R 276	.480	.093	.360
-7	R 277	.375	.097	.395
-8	R 278	.375	.125	21/64
-9	R 2711	7/16	.160	5/16
-10	R 2712	7/16	.182	5/16
-11	R 2721 *	43/64	1/8	5/8
-12	R 2722	7/16	.130	5/16



* SERRATED EDGE

NOTE~NOMINAL HARDNESS
60 - 70 DUROMETER

REQ.	ITEM	PART NO.	DESCRIPTION			SYMBOL
			THE TECHNICAL MATERIEL CORP.			
			MAMARONECK, NEW YORK			
			ROLLER, RUBBER			
			RUBBER			
			MATERIAL			
			SEE NOTE			
			J.C. BIELE	<i>[Signature]</i>	<i>[Signature]</i>	
			TYPE & TEMPER	HEAT TREAT. SPEC.	DRAWN	CHECKED
						FINAL APPROVAL
			FINISH & SPEC. N .			
			ELEC. DES. APP MECH. DES. APP			
						RY-129

ISSUE	ITEM	CHANGED FROM	DATE	CH. NO.	DRAFTS	CHECKER	ENG. APP.
TOLERANCES			SCALE: REF~ S-401-109				
DEC. DIM. ±			MAXIMUM ALLOWABLE TOLERANCES HAVE BEEN DETERMINED AND ANY DEVIATIONS WILL BE CAUSE FOR REJECTION: REMOVE ALL BURRS AND SHARP EDGES				
FRAC. DIM. ±							
ANGULAR DIM. ±							