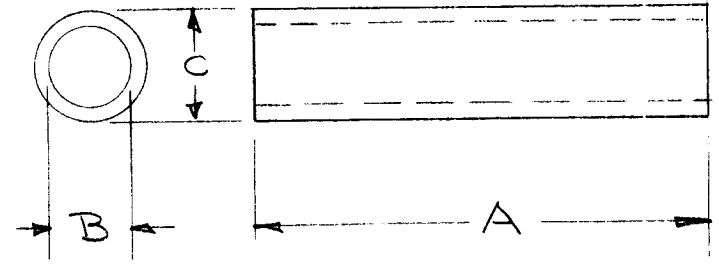


TMC PART NO	A	B	C
RY-125 -1	2	3/8	1/2
RY-125 -2	1	7/16	5/8
RY125-3	3/8	7/16	5/8

REQ. PER UNIT	USED ON		
	MODEL	ASS'Y. NO.	DATE
			RY-125 B



REF: MILLER PRODUCTS

ISSUE	ITEM	CHANGED FROM	DATE	CH. NO.	DRAFTS	CHECKER	ENG. APP.	REQ. ITEM	PART NO.	DESCRIPTION	SYMBOL		
B	2	ADD RY125-3	9-13-73	21100	GE	sj	sj			THE TECHNICAL MATERIEL CORP. MAMARONECK. NEW YORK	BUSHING, N2OPRENE		
A	2	ADDED RY-125-2	3-10-64	11006	A.M.	gcb							
TOLERANCES								SCALE: 1					
DEC DIM. ± FRAC. DIM. ± ANGULAR DIM. ±								MAXIMUM ALLOWABLE TOLERANCES HAVE BEEN DETERMINED AND ANY DEVIATIONS WILL BE CAUSE FOR REJECTION. REMOVE ALL BURRS AND SHARP EDGES					
								STOCK SIZE		# 45 N2OPRENE RUBBER TUBING			
								MATERIAL					
								TYPE & TEMPER		HEAT TREAT. SPEC.		DRAWN	
								BLACK				P.R.K.	
								FINISH & SPEC. NO.		ELEC. DES. APP.		MECH. DES. APP.	
												RY-125 B	