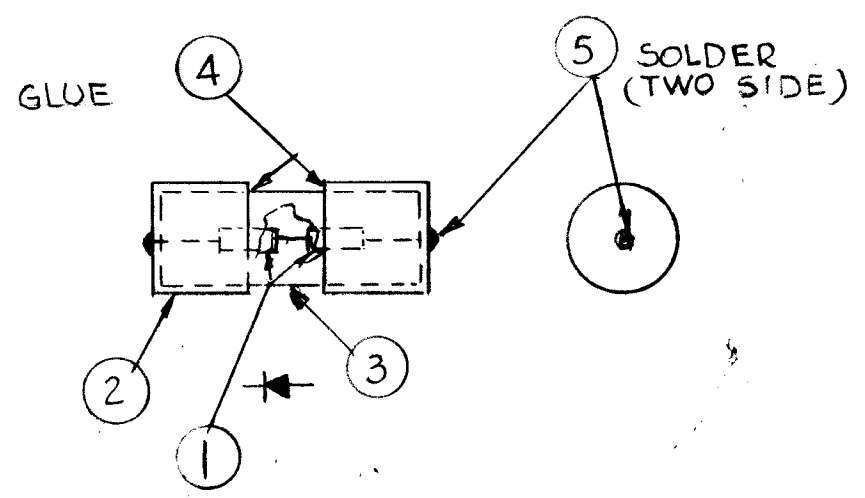
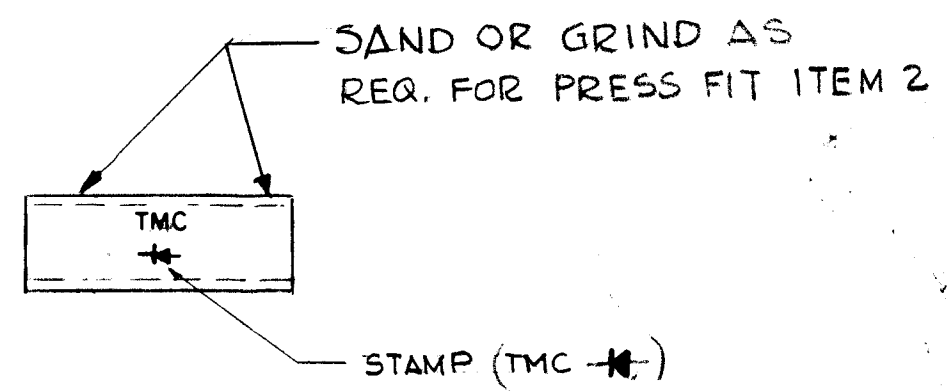
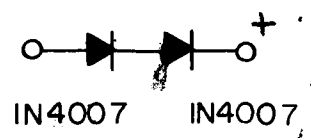


REVISIONS							
E.M.N. NO.	DRAFT	CHKD	ZONE	LTR	DESCRIPTION	DATE	APPROVED
	GDL			C	REDRAWN & UPDATED	2-7-89	



- SCHEMATIC -



MAX VOLT 1000V  
MAX AMP 1A

REQ'D	ITEM	PART NUMBER	DESCRIPTION	SYM.
X	5	BS 100	SOLDER TIN ALLOY	
X	4	—	GLUE	
1	3	CF 120-1.375	COIL FORM	
2	2	HB 129	CAP, COVER RECTIFIER	
2	1	IN 4007	DIODE	

FINAL ASSEMBLY

1	CPP-2	
QTY / UNIT	MODEL USED ON	ASS'Y NO.
APPLICATION		
	CODE	

**NOTICE TO PERSONS RECEIVING THIS DRAWING**  
 THE TECHNICAL MATERIEL CORPORATION claims proprietary right in the material disclosed hereon. This drawing is issued in confidence for engineering information only and may not be reproduced or used to manufacture anything shown hereon without permission from THE TECHNICAL MATERIEL CORPORATION to the user. This drawing is loaned for mutual assistance and is subject to recall at any time.

UNLESS OTHERWISE SPECIFIED DIMENSIONS ARE IN INCHES AND INCLUDE CHEMICALLY APPLIED OR PLATED FINISHES

DECIMALS	FRACTIONS
.X ± .05	1/64
.XX ± .01	TOLS. ANGLES
.XXX ± .005	0° - 30'

MATERIAL  
FINISH

FINAL APPROVAL	DATE
<i>G.D.L.</i>	2/7/89
MECH. DES.	DATE
ELECT. DES.	DATE
J. I.	2/7/89
CHECKED	DATE
DRAWN	DATE
G.D.L.	2-7-89

LIST OF MATERIAL  
**THE TECHNICAL MATERIEL CORP.**  
 MAMARONECK, NEW YORK  
**RECTIFIER, SELENIUM**

SIZE	CODE IDENT. NO.	DWG NO.	ISSUE
B	82679	RX107	C
SCALE	SHEET 2 OF 2		

