

TMC PART NO.	MIL. TYPE NO.	A MAX.	B ±1/32	C ±1/64 DIA.	D ±1/64 DIA.	E DIA.		F	AVAIL. RES. RANGE	MFG. TYPE NO.
						MIN	MAX			
RW-122-1	MFA	8 11/16	9 25/32	1 9/64	1 25/64	13/16	1 5/16	33/64 ± 1/64	3.5-6.0	MEG 147 E
RW-122-2	MFB	4 3/16	5 9/32	1 9/64	1 25/64	13/16	1 5/16	33/64 ± 1/64	1.0-3.5	MEG 148 E
RW-122-3	MFC	1 25/32	2 15/16	13/16	1.0	11/16	1 5/64	33/64 ± 1/64	0.5-1.0	MEG 149 E

REVISIONS					
SYM	DESCRIPTION	DATE	E.M.N. NO.	DRAFT	CHKD
A	REVISED & REDRAWN FOR CLARIFICATION	10/2/63	10082	RD	RD
B	NO LONG AVAIL, REPLACEMENT CHART ADDED	8-28-81	21891	QU	

DIRECT REPLACEMENT CHART
 RW139 REPLACES RW122-1 (RW122-1 NO LONGER AVAILABLE)

SPECIFICATIONS:
VOLTAGE RATING:
 MAXIMUM: 1 KILOVOLT PER MEGOHM OF RESISTANCE
CURRENT RATING:
 MAXIMUM: 1 MILLIAMPERE
OVERLOAD RATING:
 200% RATED VOLTAGE FOR 1 SECOND.
TEMPERATURE RISE FOR NOMINAL RATING:
 25°C MAX.
MAXIMUM OPERATING TEMPERATURE:
 110°C FOR CONTINUOUS OPERATION (AMBIENT PLUS TEMPERATURE RISE)
RESISTANCE TOLERANCE:
 STANDARD TOLERANCE: PLUS OR MINUS 0.5%
TERMINALS:
 METAL, FERRULE TYPE.
GOVERNMENT SPECIFICATIONS:
 BUILT IN ACCORDANCE WITH THE REQUIREMENTS OF MIL-R-29 AND AMENDMENTS.

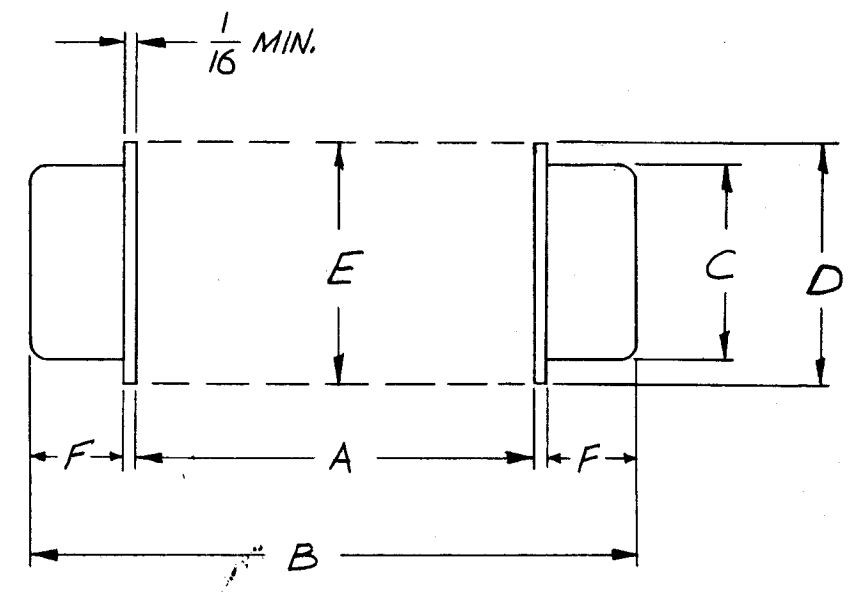
TMC PART NO. TO BE IN THE FOLLOWING FORM:

RW-122-1-103

TMC PART NO. RESISTANCE IN OHMS

TOTAL RESISTANCE IN OHMS IS INDICATED BY A THREE DIGIT NUMBER. THE 1ST TWO DIGITS ARE THE FIRST TWO SIGNIFICANT FIGURES. THE LAST DIGIT SPECIFIES THE NUMBER OF ZEROS WHICH FOLLOW THE FIRST TWO FIGURES.

EXAMPLE: 103=10,000 OHMS.



No LONGER AVAILABLE
 (SEE DIRECT REPLACEMENT CHART)

NOTE: THESE RESISTORS SHOULD BE SUPPORTED BY THE FERRULE TERMINALS ONLY.

NOTES

Q'TY./UNIT	MODEL USED ON	ASS'Y. NO.
SCALE	CODE	
NONE		S401-49

THE CONTENTS OF THIS DRAWING ARE THE EXCLUSIVE PROPERTY OF THE TECHNICAL MATERIEL CORP. ITS UNAUTHORIZED USE OR REPRODUCTION IN WHOLE OR IN PART IS STRICTLY FORBIDDEN.

REQ'D.	ITEM	PART NUMBER	DESCRIPTION	SYMBOL
LIST OF MATERIAL				
MATERIAL		THE TECHNICAL MATERIEL CORP. MAMARONECK, NEW YORK		
FINISH		TITLE RESISTOR, FIXED, WIREWOUND OR FILM		
UNLESS OTHERWISE SPECIFIED DIMENSIONS ARE IN INCHES AND INCLUDE CHEMICALLY APPLIED OR PLATED FINISHES		DRAWN <i>L. Davis</i>	DATE 10/2/63	FINAL APPROVAL <i>BP</i>
		CHECKED <i>RD</i>	DATE 10/4/63	
DECIMALS .X ± .05 .XX ± .01 .XXX ± .005		FRACTIONS ± 1/64 ANGLES ± 0° 30'		DATE 10/7/63
		ELECT. DES. <i>gc</i>		RW-122
		MECH. DES.		B
				SHEET
				REV. LTR.