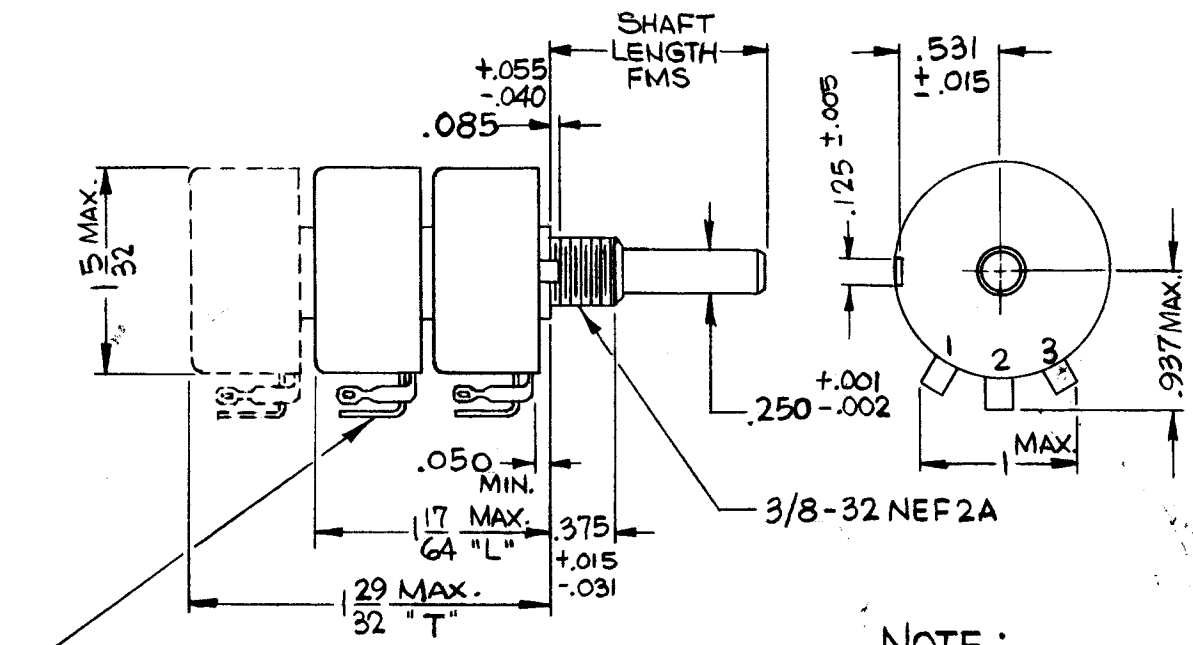


STANDARD DRAWING

RV122



NOTE: EACH SECTION MAY BE FURNISHED WITH ONLY TWO TERMINALS AS SHOWN SCHEMATICALLY.

DESIGN & POSITION OF TERMINALS OPTIONAL

REVISIONS						
SYM	DESCRIPTION	DATE	E.M.N. NO.	DRAFT	CHKD	APPD
Ø	ORIGINAL RELEASE	5-13-66	Ø	GDL		

SPECIFICATIONS

ATTENUATION: 30db OVER 90% OF ROTATION
60db IN REMAINING 10% OF ROTATION

INSERTION LOSS: LESS THAN 1.0db (600Ω & 75Ω), 1.5db (50Ω OR LESS)

INPUT IMPEDANCE: WITHIN ±20%

POWER RATING: 2WATTS DC 4 WATTS AUDIO

OPERATING TORQUE: 1 TO 9 OUNCES-INCHES (L), 1-12 (T)

STOP TORQUE: 8 POUND-INCHES

ROTATION: 309° TO 320°

DIELECTRIC STRENGTH: 450VRMS

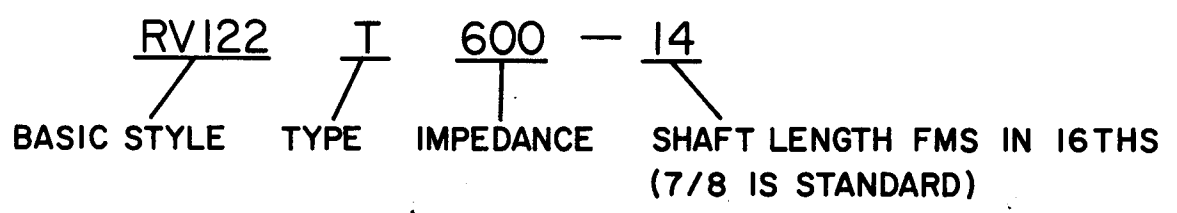
BACKLASH: 3° (L), 6° (T)

MATERIAL: AS PER MIL-R-19 (RA20) AND MIL-R-94 (RV4) WHERE APPLICABLE

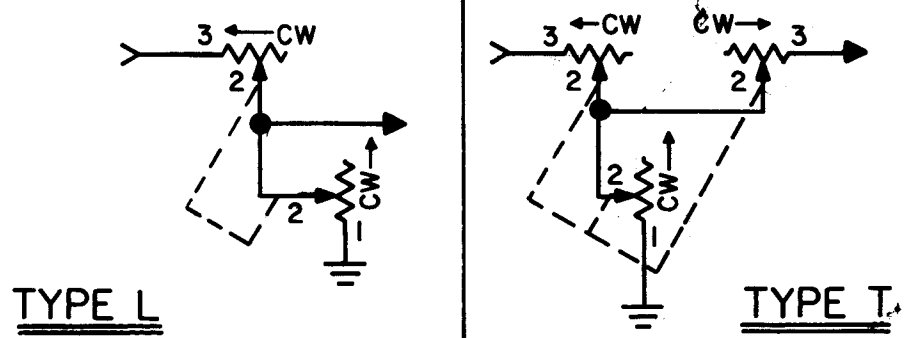
HARDWARE SUPPLIED: ONE HEXNUT 1/2 x 3/32
ONE INTERNAL TOOTH LOCKWASHER 1/2 DIA.
BRASS, NICKEL PLATE

STANDARD IMPEDANCES: 4Ω, 8Ω, 16Ω, 50Ω, 75Ω, 600Ω

TMC PART NUMBER SHALL BE IN THE FOLLOWING FORM:



SCHEMATICS



REQ'D.	ITEM	PART NUMBER	DESCRIPTION	SYMBOL
LIST OF MATERIAL				
MATERIAL			THE TECHNICAL MATERIEL CORP. MAMARONECK, NEW YORK	
FINISH			TITLE RESISTOR, VARIABLE ATTENUATOR	
UNLESS OTHERWISE SPECIFIED DIMENSIONS ARE IN INCHES AND INCLUDE CHEMICALLY APPLIED OR PLATED FINISHES		DRAWN H. AUSTIN	DATE 5-3-66	FINAL APPROVAL <i>[Signature]</i>
DECIMALS .X ± .05 .XX ± .01 .XXX ± .005		CHECKED <i>[Signature]</i>	DATE 5-13-66	DATE 5/13/66
FRACTIONS ± 1/64 ANGLES ± 0° 30'		ELECT. DES. <i>[Signature]</i>	DATE 5/13/66	DATE 5/13/66
TOLERANCES		MECH. DES.	DATE	DATE
			SHEET RV122	REV. LTR. Ø

STANDARD DRAWING

NOTES

Q'TY./UNIT	MODEL USED ON	ASS'Y. NO.
SCALE 4	CODE C	S401-106 (D43 & T43)
THE CONTENTS OF THIS DRAWING ARE THE EXCLUSIVE PROPERTY OF THE TECHNICAL MATERIEL CORP. ITS UNAUTHORIZED USE OR REPRODUCTION IN WHOLE OR IN PART IS STRICTLY FORBIDDEN.		