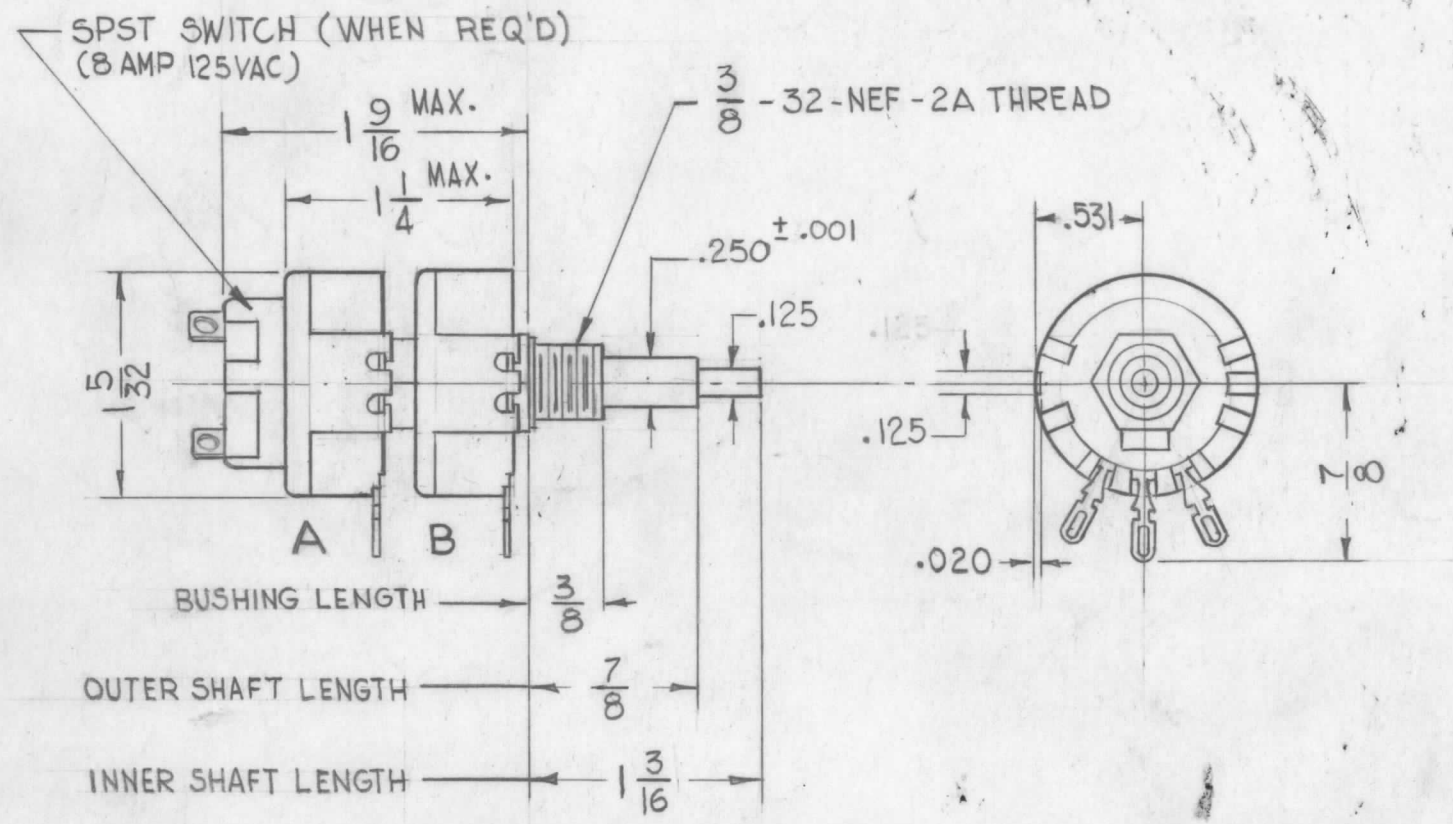


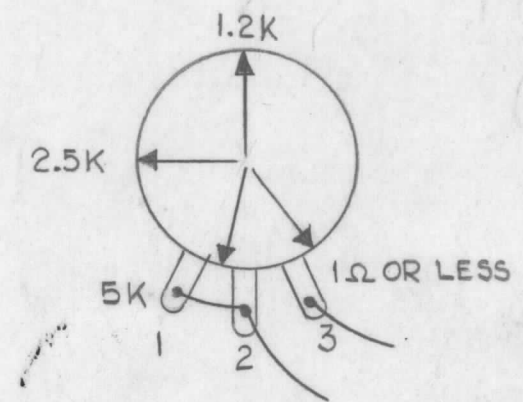
TMC PART NO.	RESISTANCE		TAPER		RES.TOL.	USED ON	SWITCH	SHAFT LENGTH	
	A	B	A	B				INNER	OUTER
RV-109-1	50Ω	500K	LIN.	C.W. LOG	20%	GPR-92	YES	1 3/16	7/8
RV-109-2	5 MEG.	5K	LIN.	SEE NOTE 2 SPEC. LOG	20%	GPR-92	YES	1 3/16	7/8
RV-109-3	100Ω	5K	LIN.	LIN.	20%	SME	NO	1 3/16	7/8
RV-109-4	1K	10K	C.W. LOG	LIN	20%	MMX-1	NO	1 3/16	7/8
RV-109-5	10K	500Ω	LIN	LIN	20%	MMXM-2	NO	1 1/4	7/8

REVISIONS					
SYM	DESCRIPTION	DATE	E.M.N. NO.	DRAFT	CHKD APPD
A	CHART: RV-109-3 & SWITCH COL. ADD. ON CALLOUT "SPST SWITCH" (WHEN REQ.) ADD. TITLE: "WITH SPST SWITCH" DELE.	12-24-64	13165	df	ca
B	RV109-4 ADDED. NOTE 1: (MAX RES. 1Ω EACH SECT POTS MUST MEET MILL SPEC. R94B NO Q.P.L. REQ.) DELETED	5-29-67	18250	G.D.L	RH J
C	RV109-5 ADDED, 10K, 500Ω, LIN, LIN, etc	7/6/77	21559	WB	✓ F.B.

RV-109



NOTES
 1- MAX END RESISTANCE 1Ω EACH SECTION
 POTS MUST MEET MILL SPEC. R94B
 NO Q.P.L. REQ.
 NOTE - -
 1-



NOTICE TO PERSONS RECEIVING THIS DRAWING

THE TECHNICAL MATERIEL CORPORATION claims proprietary right in the material disclosed hereon. This drawing is issued in confidence for engineering information only and may not be reproduced or used to manufacture anything shown hereon without permission from THE TECHNICAL MATERIEL CORPORATION to the user. This drawing is loaned for mutual assistance and is subject to recall at any time.

Property of:
 THE TECHNICAL MATERIEL CORPORATION
 MAMARONECK, NEW YORK

NOTES

1 EA.	GPR-92	
Q'TY./UNIT	MODEL USED ON	ASS'Y. NO.
SCALE	CODE	
THE CONTENTS OF THIS DRAWING ARE THE EXCLUSIVE PROPERTY OF THE TECHNICAL MATERIEL CORP. ITS UNAUTHORIZED USE OR REPRODUCTION IN WHOLE OR IN PART IS STRICTLY FORBIDDEN.		

REQ'D.	ITEM	PART NUMBER	DESCRIPTION	SYMBOL
GELLMAN LIST OF MATERIAL				
MATERIAL			THE TECHNICAL MATERIEL CORP. MAMARONECK, NEW YORK	
FINISH			TITLE RESISTOR, VARIABLE DUAL WITH SPST SWITCH	
UNLESS OTHERWISE SPECIFIED DIMENSIONS ARE IN INCHES AND INCLUDE CHEMICALLY APPLIED OR PLATED FINISHES		DRAWN G.D.L	DATE 10-19-62	FINAL APPROVAL [Signature]
		CHECKED [Signature]	DATE 10/19/62	
		ELECT. DES. [Signature]	DATE 10-19-62	RV-109
		MECH. DES. [Signature]	DATE	C
DECIMALS .X ± .05 .XX ± .01 .XXX ± .005				SHEET
FRACTIONS ± 1/64 ANGLES ± 0° 30'				REV. LTR.