

RV-107

"T" PADS	
Catalog No.	Impedance
T2	2 Ohms
T4	4 Ohms
T6	6 Ohms
T8	8 Ohms
T15	15 Ohms
T50	50 Ohms
T100	100 Ohms
T200	200 Ohms
T250	250 Ohms
T500	500 Ohms
T600	600 Ohms
T1000	1000 Ohms
T2000	2000 Ohms
T3000	3000 Ohms
T4000	4000 Ohms

"L" PADS	
Catalog No.	Impedance
L2	2 Ohms
L4	4 Ohms
L6	6 Ohms
L8	8 Ohms
L15	15 Ohms
L50	50 Ohms
L100	100 Ohms
L200	200 Ohms
L250	250 Ohms
L500	500 Ohms
L600	600 Ohms
L1000	1000 Ohms
L2000	2000 Ohms
L3000	3000 Ohms
L4000	4000 Ohms

Electrical Specifications for "L" and "T" Pads:

Maximum Continuous Rating: 4 Watts

Peak Audio Rating: 15 Watts

Maximum Attenuation: 2-8Ω, 20db  
ABOVE 8Ω, 38db

MECHANICAL ROTATION: 294°

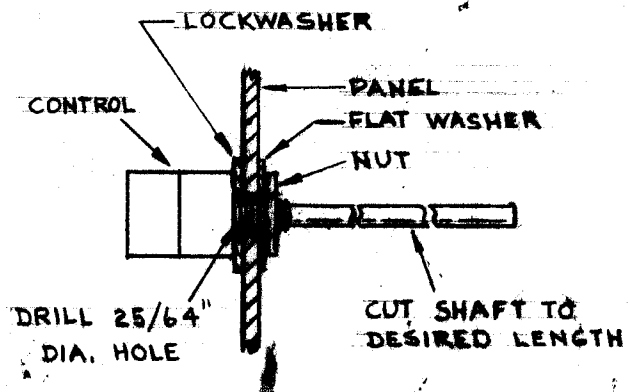
HARDWARE: 1, HEX NUT, NT3732BN

1, LOCKWASHER, LWI37LRN

1, FLAT WASHER, FW100-10BN  
(SUPPLIED BY TMC)

**SUPERSEDED**  
REPLACED BY RV122

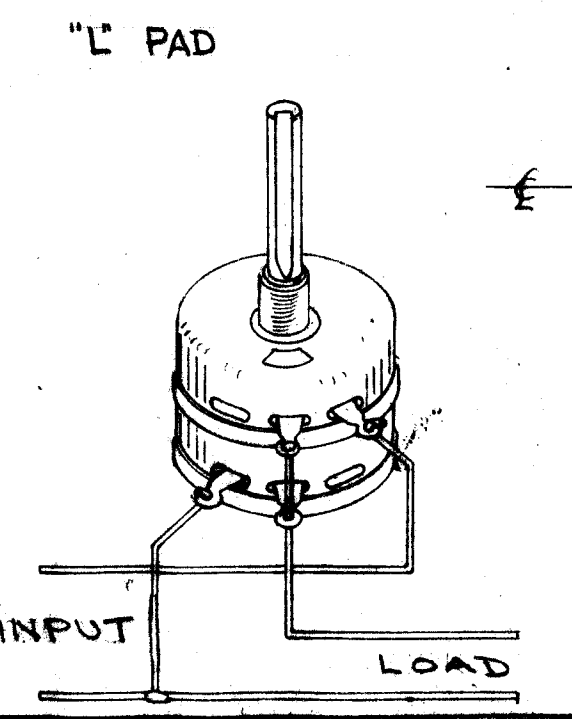
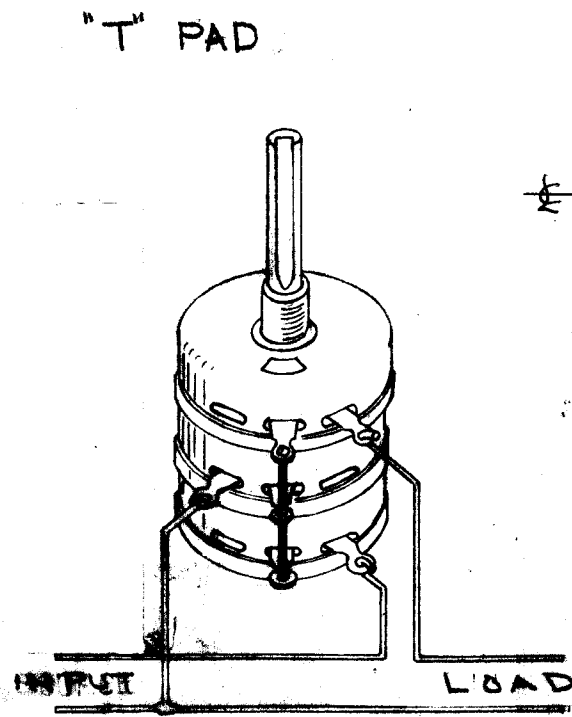
MOUNTING INSTRUCTIONS



RV-107 - T - 4  
Basic No. PAD Type Impedance  
(See Chart)

REPLACES RR108

**STANDARD DRAWING**



REV.	ITEM	DATE	CH. NO.	DRAFTS	CHECKED	APP.
B	ADD SUPERSEDED NOTE	5-4-66				
A	DRG. PICT. AND ELEC. SPECS. FOR "T" & "L" PADS; MTE. INST. PICT. AND ELEC. SPECS. FOR MAX. ATTN. WAS 38 DB; MTE. PICT. AND ELEC. SPECS. FOR ATTEN. WAS 20 DB.	4-26-65	13915			

TOLERANCES: SCALE: S-401-107

MAXIMUM ALLOWABLE TOLERANCES HAVE BEEN DETERMINED AND ANY DEVIATIONS WILL BE CAUSE FOR REJECTION. REMOVE ALL BURRS AND SHARP EDGES.

PER UNIT	PROJECT NO.	ASS'Y. NO.	DATE

USED ON

REQ. ITEM	PART NO.	DESCRIPTION	SYMBOL
		THE TECHNICAL MATERIEL CORP. MAMARONECK, NEW YORK	
		ATTENUATORS	
		"T" AND "L" PAD	
		cy	
		fw	
		amb	
		DRAWN	CHECKED
		FINAL APPROVAL	
		RV-107	
		ELEC. DES. APP. MECH. DES. APP.	

RV-107

"T" PADS	
Catalog No.	Impedance
T2	2 Ohms
T4	4 Ohms
T6	6 Ohms
T8	8 Ohms
T15	15 Ohms
T50	50 Ohms
T100	100 Ohms
T200	200 Ohms
T250	250 Ohms
T500	500 Ohms
T600	600 Ohms
T1000	1000 Ohms
T2000	2000 Ohms
T3000	3000 Ohms
T4000	4000 Ohms

"L" PADS	
Catalog No.	Impedance
L2	2 Ohms
L4	4 Ohms
L6	6 Ohms
L8	8 Ohms
L15	15 Ohms
L50	50 Ohms
L100	100 Ohms
L200	200 Ohms
L250	250 Ohms
L500	500 Ohms
L600	600 Ohms
L1000	1000 Ohms
L2000	2000 Ohms
L3000	3000 Ohms
L4000	4000 Ohms

Electrical Specifications for "L" and "T" Pads:

Maximum Continuous Rating: 4 Watts

Peak Audio Rating: 15 Watts

Maximum Attenuation: 2-8Ω, 20db  
ABOVE 8Ω, 38db

MECHANICAL ROTATION: 294°

HARDWARE: 1, HEX NUT, NT3732BN

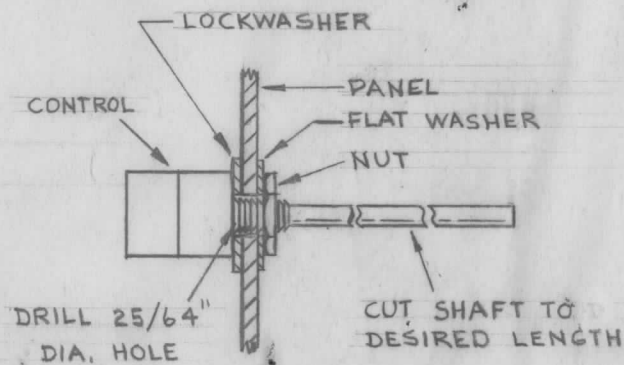
1, LOCKWASHER, LWI37LRN

1, FLAT WASHER, FW100-18BN

(SUPPLIED BY TMC)

**SUPERSEDED**  
REPLACED BY RV122

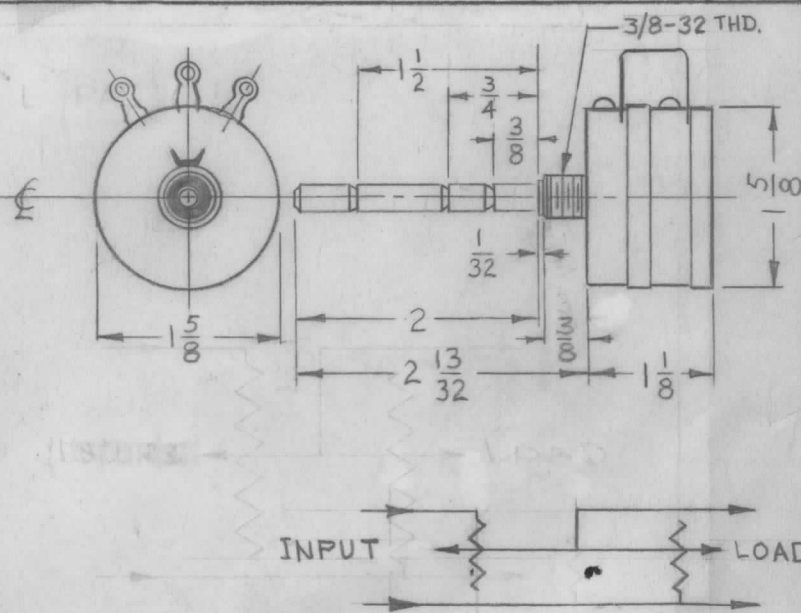
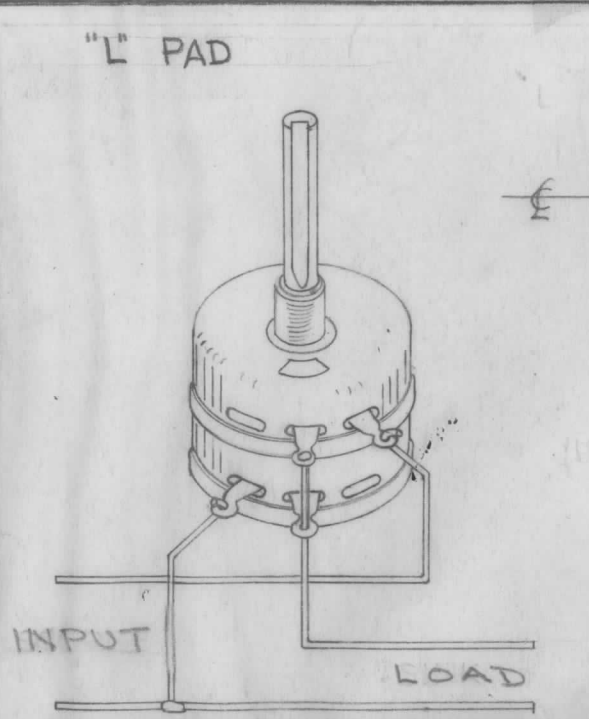
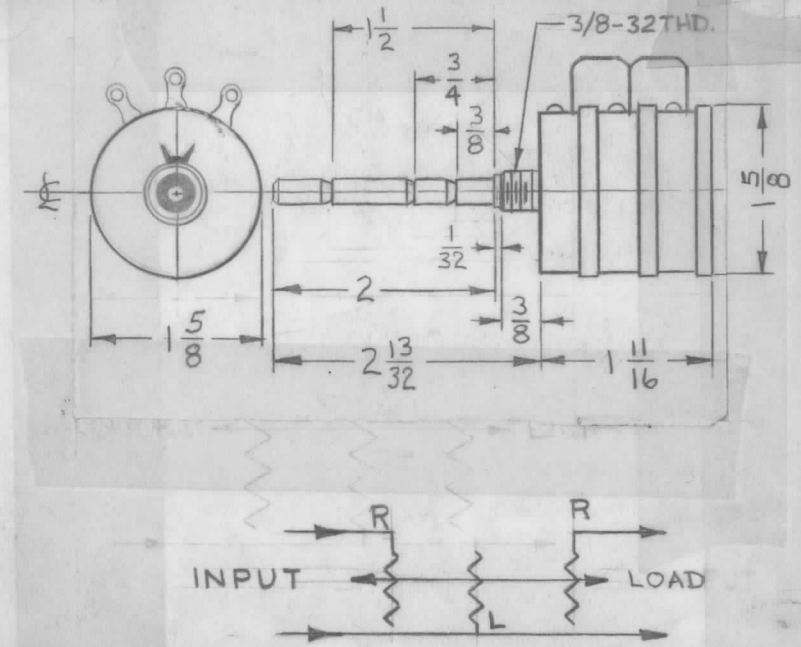
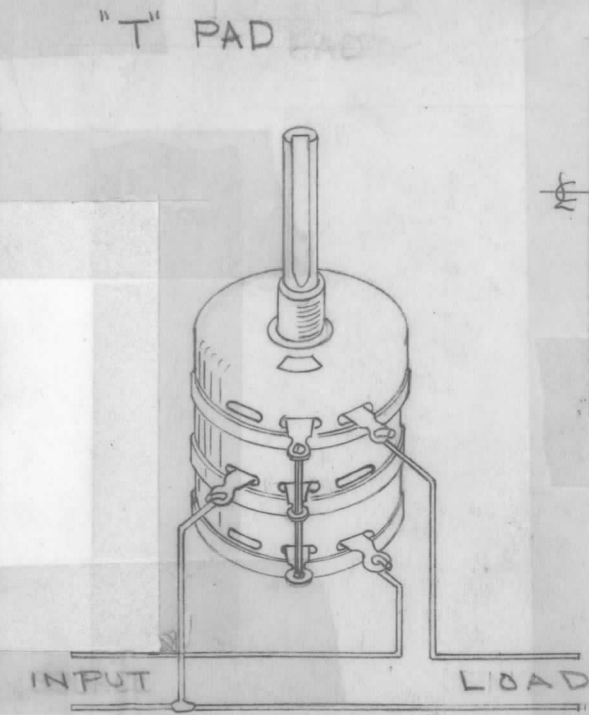
MOUNTING INSTRUCTIONS



RV-107 - T - 4  
Basic No. PAD Type Impedance  
(See Chart)

REPLACES RR108

**STANDARD DRAWING**



ISSUE	ITEM	CHANGED FROM	DATE	CH. NO.	DRAFTS	CHECKER	ENG. APP.
B		ADD SUPERSEDED NOTE	5-4-66	116204	WPD	PCB	PC
A		DIM. PICT. ADD. FOR "T" & "L" PADS; MTG. INST. PICT. ADD; ELEC. SPECS; MAX. ATTN. WAS 36 db; MECH. ROT. & HDWRE. ADD; REPLACES "RR108" ADD.	4-26-65	13915	9.2	PCB	PC

TOLERANCES: SCALE: 5-401-107

MAXIMUM ALLOWABLE TOLERANCES HAVE BEEN DETERMINED AND ANY DEVIATIONS WILL BE CAUSE FOR REJECTION. REMOVE ALL BURRS AND SHARP EDGES

REQ. PER UNIT	MODEL	PROJECT NO.	ASS'Y. NO.	DATE

USED ON

REQ. ITEM	PART NO.	DESCRIPTION	SYMBOL
		THE TECHNICAL MATERIEL CORP. MAMARONECK. NEW YORK	
		ATTENUATORS	
		"T" AND "L" PAD	
		cy	PCB
		DRAWN	CHECKED
			FINAL APPROVAL
			RV-107