

TMC PART NUMBER	MFR. PART NO.	RATED WATTS 40°C		OHMIC VALUES		DIMENSIONS			
		DC	AC	MIN.	MAX. SPIRALLED	A	B NOMINAL	C	D MIN.
RR135-1	H37	50	70	20	500K	6±.031	1.125	.500	.875
RR135-2	H33	10	15	20	150K	3±.016	.531	.375	.313

REVISIONS						
SYM	DESCRIPTION	DATE	E.M.N. NO.	DRAFT	CHKD	APPD
X	EXPER. RELEASE	10-27-64	X	<i>[Signature]</i>		
X	ORIGINAL RELEASE FOR PRODUCTION	11/2/64	φ	---		
A	RR135-2 ADDED	4-30-65	13933	<i>[Signature]</i>	<i>[Signature]</i>	<i>[Signature]</i>

A
RR135

CHARACTERISTICS

TOLERANCE:
STANDARD TOLERANCE WITH STRIPED OR SPIRALLED UNITS IS 2%.

LOAD LIFE:
THE AVERAGE RESISTANCE CHANGE AFTER 500 HOURS OPERATION AT MAXIMUM DISSIPATION AT 40°C AMBIENT IS 3%.

MOISTURE RESISTANCE:
CORNING H RESISTORS MORE THAN MEET THE SPECIFICATIONS FOR MAXIMUM RESISTANCE CHANGE OF MIL-R-11804D.

TEMPERATURE COEFFICIENT:
THE VALUE OF TEMPERATURE COEFFICIENT IN THE RANGE OF -35°C TO +235°C IS LESS THAN ±500 ppm PER DEGREE C.

SHELF LIFE:
0.1% PER YEAR MAXIMUM RESISTANCE CHANGE.

SHORT TIME OVERLOAD:
A STANDARD 5 SECOND OVERLOAD OF 6.25 TIMES THE RATED WATTAGE CAUSES A PERMANENT RESISTANCE CHANGE OF LESS THAN 0.5%.

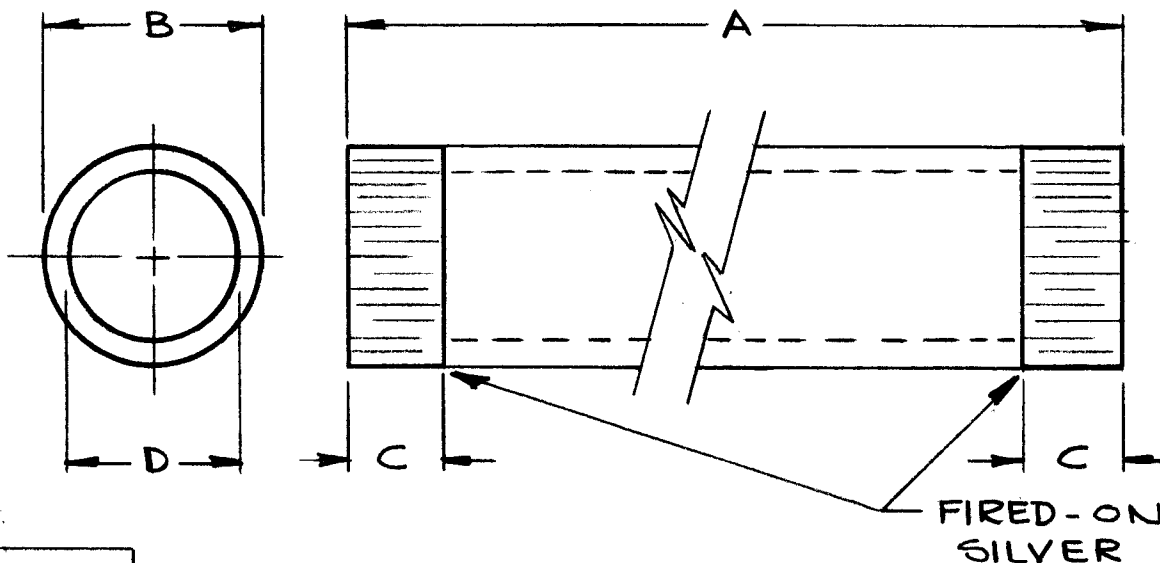
HOT SPOT:
MAXIMUM HOT SPOT TEMPERATURE IS 250°C.

VOLYAGE COEFFICIENT:
VOLTAGE COEFFICIENT AVERAGES LESS THAN 0.001% PER VOLT.

FREQUENCY CHARACTERISTICS:
THE NET REACTIVE COMPONENT IS SLIGHTLY CAPACTIVE ABOVE APPROXIMATELY 300 OHMS. BELOW THIS VALUE THE NET REACTANCE IS SLIGHTLY INDUCTIVE.

PEAK VOLTAGE:
1 KV PER SQ. IN. OF COATING SURFACE.

COATING:
TIN OXIDE



TYPE H

TMC PART NUMBER TO BE IN THE FOLLOWING FORM:

RR135-1-500

BASIC TMC PART NUMBER

RESISTANCE (LAST DIGIT # OF ZEROS)

REQ'D.	ITEM	PART NUMBER	DESCRIPTION	SYMBOL
LIST OF MATERIAL				

STANDARD DRAWING		
Q'TY./UNIT	MODEL USED ON	ASS'Y. NO.
SCALE <i>[Signature]</i>	CODE C	5401-42
THE CONTENTS OF THIS DRAWING ARE THE EXCLUSIVE PROPERTY OF THE TECHNICAL MATERIEL CORP. ITS UNAUTHORIZED USE OR REPRODUCTION IN WHOLE OR IN PART IS STRICTLY FORBIDDEN.		

THE TECHNICAL MATERIEL CORP. MAMARONECK, NEW YORK			
TITLE RESISTOR, FIXED, FILM PYREX GLASS			
UNLESS OTHERWISE SPECIFIED DIMENSIONS ARE IN INCHES AND INCLUDE CHEMICALLY APPLIED OR PLATED FINISHES	DRAWN <i>G. Penner</i>	DATE 10-27-64	FINAL APPROVAL <i>[Signature]</i>
DECIMALS .X ± .05 .XX ± .01 .XXX ± .005	CHECKED <i>[Signature]</i>	DATE 11-2-64	DATE 11/2/64
FRACTIONS ± 1/64 ANGLES ± 0° 30'	ELECT. DES. <i>[Signature]</i>	DATE 11/2/64	DATE 11/2/64
TOLERANCES	MECH. DES.	DATE	DATE
			RR135
			A
			SHEET
			REV. LTR.

NOTES