

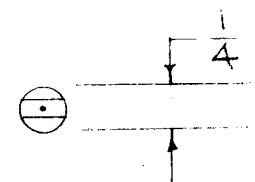
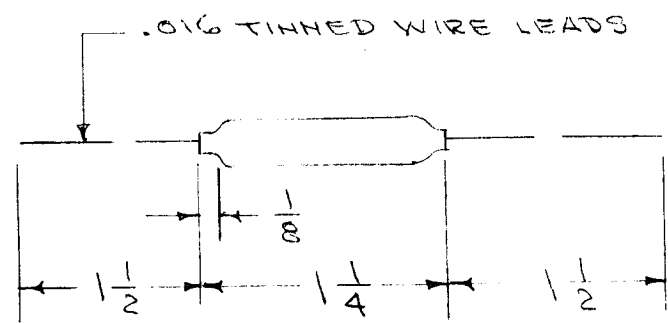
IF IT IS FOUND DESIRABLE TO CHANGE ANY TOLERANCE OR OTHER DETAIL SPECIFIED ON THIS DRAWING NOTIFY THE PURCHASER PROMPTLY.

RR-112

MAXIMUM ALLOWABLE TOLERANCES HAVE BEEN DETERMINED AND DEVIATIONS WILL BE CAUSE FOR REJECTION. REMOVE ALL BURRS AND SHARP EDGES

USED ON			
MODEL	PROJECT NO.	ASS'Y. NO.	DATE

T.M.C. NO.	VECO NO.
RR-112-1	46A2



COLD RESISTANCE

0° C	—	138 K
25° C	—	60 K
50° C	—	29 K

TEMP. COEFF. AT 25° C
- 3.13%

MAX. CONTINUOUS CURRENT
AC - 15 ma
DC - 1 ma

REF: VICTORY ENGINEERING CORP.

REQ.	ITEM	PART NO.	DESCRIPTION	SYMBOL
			THE TECHNICAL MATERIEL CORP.	
STOCK SIZE			MAMARONECK, NEW YORK	
			THERMISTOR	
MATERIAL		WEIGHT PER PC.		
TYPE & TEMPER			ORD. 7-27-55	K2
HEAT TREAT. SPEC.			DRAWN	ELEC. DES. APP. MECH. DES. APP.
FINISH & SPEC. NO.			A.J.J. FINAL APPROVAL	
			RR-112	

ISSUE	ITEM	CHANGED FROM	DATE	CN. NO.	DRAFTS	CHECKER	ENG. APP.
TOLERANCES			SCALE				
ALL OTHERS			DRILL, PUNCH, COMMERCIAL STOCK SIZES AND MANUFACTURERS TOLERANCES ARE NOT INCLUDED.				
DEC. DIM. ±							
FRAC. DIM. ±							
ANGULAR DIM. ±							